



Sewing & Stitchery

e·x·p·o

Featuring...



MARY FONS



SUE HAUSMAN



PATI PALMER &
MELISSA WATSON

Pre-Expo
February 24

Wednesday
Classes Only

February 25 to 28, 2016
Thursday - Saturday
8 am to 6 pm

Sunday
8 am to 4 pm

baby lock

Friday Night LIVE!

FRIDAY, 6:30 PM
\$25.00

SUE HAUSMANN

Join Sue Hausmann and Baby Lock for an evening filled with inspiration and fun! See how Sue and her sewing friends have made memories by creating "one of a kind" inspiring remembrances and gifts for special people through sewing. Be entertained with Sue's enthusiasm, excitement, ideas, fun and surprises as she shares unforgettable stories of her sewing life experiences. Learn Sue's signature quick techniques and tips and go home ready to sew something for someone special in your life! You won't want to leave your seat—you never know when Steve Jeffrey may call your ticket number for a door prize and you never know what to expect when Sue and Steve team up! Be prepared for an evening of laughter and fun!



Thursday

**BROTHER INNOV-IS NQ3500D
SEWING & EMBROIDERY MACHINE**
Retail Value \$4,999

Provided by Brother International/Quality Sewing

**JANOME HORIZON MEMORY CRAFT
8200QCP SPECIAL EDITION**
Retail Value \$3,499

Provided by Janome America/South Sound Sewing

Welcome

Welcome to the largest Sewing Party!

We know you are going to enjoy the new vendors, speakers, seminars and events this year. We are very excited about the fantastic door prizes our top brand industry sponsors have provided. Make sure you drop by the Pavilion to enter your chance to win. Get your registration in early as seminar classes fill very quickly. We look forward to seeing you there!

Joanne Ross
Executive Director

For more information or to register: **866-554-8559** or **www.sewexpo.com**

You call **THAT**
a quilt?

MARY FONS

Quilters Night Out

SATURDAY, 6:30 PM
\$25.00

You'll never look at quilts the same way again. Are you a traditional quilter? A contemporary quilter? Mary will take you through an entertaining, info-packed, "a-ha moment" lecture looking at the amazing styles we have in today's quilt world. It's a little bit history, a lot of fun, and after this lecture, you can impress your friends with your newfound quilt-spotting skills.



Friday

**PFAFF QUILT EXPRESSION 4.2
DELUXE SEWING & QUILTING
MACHINE**

Retail Value \$2,999

Provided by Pfaff Sewing Machines/Quality Sewing

**BERNINA 530 SWISS RED SPECIAL
EDITION SEWING MACHINE**

Retail Value \$2,999

Provided by Bernina of America/Puget Sound Dealers

ELNA LOTUS
Retail Value \$999

Provided by South Sound Sewing/Elna USA



Saturday

**HUSQVARNA-VIKING DESIGNER
JADE™ 35 SEWING & EMBROIDERY
MACHINE**

Retail Value \$2,999 each

Provided by Husqvarna Viking Sewing Machines & Quality Sewing

JANOME SKYLINE S5
Retail Value \$1,499

Provided by Janome America/South Sound Sewing



Sunday

**HUSQVARNA-VIKING DESIGNER
JADE™ 35 SEWING & EMBROIDERY
MACHINE**

Retail Value \$2,999 each

Provided by Husqvarna Viking Sewing Machines & Quality Sewing

ELNA EXCELLENCE 730PRO
Retail Value \$3,999

Provided by South Sound Sewing/Elna USA

One Needle Sessions (THURSDAY/SATURDAY)

	Showplex ROOM B	Showplex ROOM C	Showplex ROOM D	Showplex ROOM E
8:30 TO 9:15	1641 Ultimate Upcycles <i>Marsha McClintock</i>	1650 The Vintage Pattern Collection <i>Laura Nash</i>	1617 Best Tools and Notions of the Trade <i>Geri Grasvik</i>	1680 How to Fit a Dress Form To Your Body Shape <i>Joe Vecchiarelli</i>
9:30 TO 10:15	1657 How to Fit Any Pattern in a Knit vs. a Woven Fabric <i>Pati Palmer</i>	1602 DIY Textile Embroidery for Your Home <i>Bobbi Bullard</i>	1630 Utilizing Your Photos for Social Media and Beyond! <i>Stephanie Kleinman</i>	1632 Dynamic Easy Totes <i>Cheryl Kuczek</i>
10:30 TO 11:15	1667 The Sheath Dress & Upper Body Fit <i>Kathy Ruddy</i>	1684 Table Runners for Every Occasion <i>Mech Watne</i>	1620 The Reversible Dimension <i>Mary Grover</i>	1671 Subway Art with Machine Embroidery <i>Lisa Shaw</i>
11:30 TO 12:15	1626 Tailoring Before You Cut <i>Marla Kazell</i>	1601 The Ins and Outs of Bindings <i>Dana Bontrager</i>	1682 HAUTE Embroidery <i>Katrina Walker</i>	1612 Embroidery Designs Made Easy <i>John Deer</i>
12:30 TO 1:15	1652 Find Your "Handsome Prints" <i>Nancy Nix-Rice</i>	1654 Classy Camisoles <i>Monica O'Rourke Bravo</i>	1676 Make it Personal! Quick & Easy Gifts for Friends and Family <i>Jeanie Sumrall-Ajero</i>	1634 Storyboard of Inspiration <i>Linda Lee</i>
1:30 TO 2:15	1631 Everything You Need To Know To Start Sewing With Patterns <i>Deborah Kreiling</i>	1605 What's in Your Creative Tool Box <i>Steve Butler</i>	1679 Create Beautiful Buttons & Cabuchons <i>Fran Valera</i>	1635 Design Details <i>Pamela Leggett</i>
2:30 TO 3:15	1610 Blown Out of Proportion <i>Louise Cutting</i>	1656 Upcycle Sewing <i>Michelle Paganini</i>	1643 Just What Is Terial Magic? <i>Terry McFeely</i>	1664 Understanding & Conquering Your Curves <i>LoriAnne Reeves</i>
3:30 TO 4:15	1640 Dancing on the Border <i>Julie Luoma</i>	1606 Say Yes to the Fit Dress <i>Karen Campbell</i>	1662 Teaching Teens to Sew <i>Toni Preston</i>	1608 Sew Like a Pro <i>Connie Crawford</i>
4:30 TO 5:15	1673 Thirty Minute Gifts, Fun and Fast! <i>Connie Spurlock</i>	1622 Create Your Perfect Quilting Space <i>Lois Hallock</i>	1659 Cool Quilting Tools <i>Sandi Pickering</i>	1674 The Dressmaker and Alterations Toolbox <i>Carol Steinbrecher</i>

Showplex ROOM G	VIP Building ROOM L	Pavilion EXPO RUNWAY	Showplex FREE STAGE	
1665 Quick Gifts From Your "Scrap" Stash <i>Cindy Rowell</i>	1638 Sparkle It Up! <i>Cindy Losekamp</i>	1646 Stash Buster Plus More Bang For the Buck <i>Marti Michell</i>	Stabilizing Solutions for All Fabrics and Embroideries! <i>Floriani Educator</i>	8:30 TO 9:15
1644 Zip to It <i>Linda McGehee</i>	1637 Strip Pieced Mariners Compass (No Paper Piecing) <i>Robin Long</i>	Simply the Best of Spring 2016 from <i>Simplicity</i> Pattern Company SATURDAY ONLY	Original Fabric Art <i>Joyce Teng</i>	9:30 TO 10:15
1624 Pattern Alteration SOS (Swivel Our Seams) <i>Lorraine Henry</i>	1660 Beguiling Bias: A Taste of Trim <i>Vaune Pierce</i>	Capsule Wardrobes for the Runway <i>LoriAnne Reeves</i>	Scarves and More: Your Necks Best Friends <i>Carol Steinbrecher</i>	10:30 TO 11:15
			ASG Style Show	
1621 Creating Custom Designs for Your Machine Embroidered Quilts <i>Rita Guzzard</i>	1675 Shop Your Closet and Fabric Stash <i>Carol Steinbrecher</i>	Every Day is an Adventure... So Let's Explore! <i>Louise Cutting</i>	15 Sewing Skills You Should Know <i>Debra Justice</i>	11:30 TO 12:15
1607 Trendy Sweatshirt Transformations <i>Barbara Crawford</i>	1619 DIY Your Own Dream Sewing Space <i>Chris Groce</i>	1669 Fitting Yourself, By Yourself <i>Peggy Sagers</i> THURSDAY ONLY	Serging for 18" Dolls <i>Nadeen Ward</i>	12:30 TO 1:15
		The Best of 4-H Fashion Revue <i>Laura Mendoza</i> SATURDAY ONLY		
1685 On the Edge <i>Amanda Whitlach</i>	1651 Success with Etsy <i>Laura Nash</i> THURSDAY ONLY	The <i>Vogue</i> and <i>Butterick</i> Creative's Closet <i>Marcy and Katherine Tilton</i>	Gourmet Garments <i>Gayle Wallace</i>	1:30 TO 2:15
	1604 Accuquilt Go: The Quilt in a Day Way <i>Eleanor Burns</i> SATURDAY ONLY			
1677 Easy Projects — and the Techniques That Make Them Even Easier! <i>Annie Unrein</i>	1614 Fuse, Iron and Embellish (No Sewing Required) <i>Beryl Emberson-Nash</i>	McCall's <i>Vogue</i> , <i>Butterick</i> & <i>Kwik</i> Sew Trend Show with Styling Tips <i>Melissa Watson</i>	Fusible Painted & Embellished Wall Hangings <i>Sue Purdy</i>	2:30 TO 3:15
1628 Transform the Neckline and Cash in on a New Look <i>Judy Kessinger</i>	1615 Specialty Threads for Garments, Crafts & Other Projects <i>Nancy Goldsworthy</i>	No Style Show	All About Plush Lush Fabrics <i>Cindy Surina</i>	3:30 TO 4:15
1648 Shape Up Those Garments <i>Sandy Miller</i>	1686 The Wonderful World of Online Fabric Sewing <i>Susan Kennedy</i>	No Style Show	U 2 Can Quilt, No Experience Required <i>Lisa Maki</i>	4:30 TO 5:15

One Needle Sessions (FRIDAY/SUNDAY)

	Showplex ROOM B	Showplex ROOM C	Showplex ROOM D	Showplex ROOM E
8:30 TO 9:15	1673 Thirty Minute Gifts, Fun & Fast! <i>Connie Spurlock</i>	1623 Quilt & Craft Studio Ergonomics <i>Lois Hallock</i>	1618 Flannel for All Seasons! <i>Geri Grasvik</i>	1636 Serger Techniques and Trunk Show <i>Pamela Leggett</i>
9:30 TO 10:15	1658 Tissue-Fitting Method for Pants and Tops <i>Pati Palmer</i>	1606 Say Yes to the Fit Dress <i>Karen Campbell</i>	1683 Sewing for Style <i>Katrina Walker</i>	1674 The Dressmaker & Alterations Toolbox <i>Carol Steinbrecher</i>
10:30 TO 11:15	1629 Un-Necessary Notions <i>Judy Kessinger</i>	1647 Sew Your Own Swimsuit – Fearless & Fun Techniques! <i>Annette Millard</i>	1679 Create Beautiful Buttons and Cabochons <i>Fran Valera</i>	1676 Make It Personal! Quick & Easy Gifts for Friends and Family <i>Jeanie Sumrall-Ajero</i>
11:30 TO 12:15	1646 Stash Buster Plus More Bang for the Buck! <i>Marti Michell</i>	1603 Embroidery Secrets Revealed <i>Bobbi Bullard</i>	1643 Just What is Terial Magic? <i>Terry McFeely</i>	1672 Create with Machine Embroidery Software <i>Lisa Shaw</i>
12:30 TO 1:15	1642 On the Flip Side <i>Marsha McClintock</i>	1684 Table Runners for Every Occasion <i>Mech Watne</i>	1659 Cool Quilting Tools <i>Sandi Pickering</i>	1681 From Dress Form Draping to Princess Lines <i>Joe Vecchiarelli</i>
1:30 TO 2:15	1640 Dancing on the Border <i>Julie Luoma</i>	1655 Panties <i>Monica O'Rourke Bravo</i>	1633 Pattern Hacks <i>Cheryl Kuczek</i>	1609 Inside Tailored Jackets <i>Connie Crawford</i>
2:30 TO 3:15	1611 Know Your Half Measurements <i>Louise Cutting</i>	1601 The Ins & Outs of Binding <i>Dana Bontrager</i>	1630 Utilizing Your Photos for Social Media & Beyond <i>Stephanie Kleinman</i>	1613 Making You and Your Embroidery Machine Sew Happy <i>John Deer</i>
3:30 TO 4:15	1627 Pro Tips <i>Marla Kazell</i> FRIDAY ONLY	1605 What's in Your Creative Toolbox? <i>Steve Butler</i> FRIDAY ONLY	1685 On The Edge <i>Amanda Whitlatch</i> FRIDAY ONLY	1664 Understanding & Conquering Your Curves <i>LoriAnne Reeves</i> FRIDAY ONLY
4:30 TO 5:15	1668 How to Use Elastic for Comfortable Clothes <i>Kathy Ruddy</i> FRIDAY ONLY	1656 Upcycle Sewing <i>Michelle Paganini</i> FRIDAY ONLY	1663 Costuming Basics: To Conventions & Beyond <i>Toni Preston</i> FRIDAY ONLY	1634 Storyboard of Inspiration <i>Linda Lee</i> FRIDAY ONLY

Showplex ROOM G	VIP Building ROOM L	Pavilion EXPO RUNWAY	Showplex FREE STAGE	
1616 Batting: Not Just For Quilts Anymore <i>Nancy Goldsworthy</i>	1653 Sew a Wardrobe in a Weekend <i>Nancy Nix-Rice</i>	No Style Show	U 2 Can Quilt, No Experience Required <i>Lisa Maki</i>	8:30 TO 9:15
1607 Trendy Sweatshirt Transformations <i>Barbara Crawford</i>	1619 DIY Your Dream Sewing Space <i>Chris Groce</i>	No Style Show	Fusible Painted & Embellished Wall Hangings <i>Sue Purdy</i>	9:30 TO 10:15
1651 Success with Etsy <i>Laura Nash</i>	1604 Accuquilt Go, The Quilt in a Day Way <i>Eleanor Burns</i>	Capsule Wardrobes for the Runway <i>LoriAnne Reeves</i> FRIDAY ONLY	Stabilizing Solutions for All Fabrics and Embroideries! <i>Floriani Educator</i>	10:30 TO 11:15
1678 Zippers Are Easy! <i>Annie Unrein</i>	1639 Make It Your Own <i>Cindy Losekamp</i>	Every Day is an Adventure... So Let's Explore! <i>Louise Cutting</i> FRIDAY ONLY	Original Fabric Art <i>Joyce Teng</i>	11:30 TO 12:15
1666 Threaducation Basics <i>Cindy Rowell</i>	1614 Fuse, Iron and Embellish (No Sewing Required) <i>Beryl Emberson-Nash</i>	1670 One Pattern, a Dozen Looks <i>Peggy Sagers</i> FRIDAY ONLY	All About Plush Lush Fabrics <i>Cindy Surina</i>	12:30 TO 1:15
1625 The Three Crotch Figure! <i>Lorraine Henry</i>	1637 Strip Pieced Mariners Compass (No Paper Piecing) <i>Robin Long</i>	The <i>Vogue</i> and <i>Butterick</i> Creative's Closet <i>Marcy and Katherine Tilton</i> FRIDAY ONLY	Meet Your Feet: Show & Tell <i>Debra Justice</i>	1:30 TO 2:15
1645 More Angles in Piecing <i>Linda McGehee</i>	1661 Five Feet and How to Use Them <i>Vaune Pierce</i>	McCall's <i>Vogue</i> , <i>Butterick</i> & <i>Kwik</i> Sew Trend Show with Styling Tips <i>Melissa Watson</i> FRIDAY ONLY	Serging for 18" Dolls <i>Nadeen Ward</i>	2:30 TO 3:15
1649 The Professional Touches <i>Sandy Miller</i> FRIDAY ONLY	1686 The Wonderful World of Online Fabric Sewing <i>Susan Kennedy</i> FRIDAY ONLY	No Style Show	Gourmet Garments <i>Gayle Wallace</i> FRIDAY ONLY	3:30 TO 4:15
1621 Creating Custom Designs for Your Machine Embroidered Quilts <i>Rita Guzzard</i> FRIDAY ONLY	No Class	No Style Show	No Style Show	4:30 TO 5:15

One Needle

These traditional lecture/demo seminars are the hallmark of the *Sewing & Stitchery Expo*. Learn a new technique or extend your abilities with simple new tips and tricks.

45 MINUTES

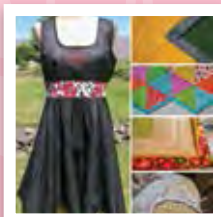
\$8 TICKETS*

*\$6 when purchased in advance.

I601 The Ins and Outs of Binding

Dana Bontrager, Dana Marie Design Co.

THU (#1601A) 11:30 AM
FRI (#1601B) 2:30 PM
SAT (#1601C) 11:30 AM
SUN (#1601D) 2:30 PM
ROOM C, SHOWPLEX



Binding is a way of finishing an edge that can be both functional and decorative. Learn methods for binding inside and outside curves, such as necklines and scalloped edges. See multiple ways of adding treatments like piping and prairie points, and imitation binding. Dana will show her technique on how to create an inside corner like you would find on a square armhole or a stair stepped edge to a quilt. Learn when and how to use a variety of binding options including fold over elastic, seam binding, and self-fabric; how to use tools to create your own binding; how to calculate the amount of binding needed and the difference in binding styles like single, double, French and more!

I602 DIY Textile Embroidery for Your Home

Barbara (Bobbi) Bullard, Bullard Designs

THU (#1602A) 9:30 AM
SAT (#1602C) 9:30 AM
ROOM C, SHOWPLEX



Create a personalized look for your home with your embroidery machine by adding your personal style with hand-crafted accent pieces. Learn secrets to embroidery with Bobbi, as she teaches you how to add piping to create a quick and easy throw, and make exquisite throw pillows that compete with ones that sell for hundreds of dollars. In addition, Bobbi will divulge her most loved embroidery tools including marking pens, spray adhesives, needles & stabilizers.

I603 Embroidery Secrets Revealed

Barbara (Bobbi) Bullard, Bullard Designs

FRI (#1603B) 11:30 AM
SUN (#1603D) 11:30 AM
ROOM C, SHOWPLEX



Learn to master all of your embroidery challenges with Bobbi's tried and true techniques. Learn the easiest methods to embroider on the most challenging fabrics. Bobbi will teach you how to select the best stabilizer to use for different fabrics and ways to work with them. See how to tame the gnarliest knits, slinkiest slinkies and sheerest sheers and keep them from distorting or slipping in the hoop. Bobbi will share her new tools to speed up your work flow.

I604 AccuquiltGO the Quilt in a Day Way

Eleanor Burns, Quilt in a Day

FRI (#1604B) 10:30 AM
SAT (#1604C) 1:30 PM
SUN (#1604D) 10:30 AM
ROOM L, VIP

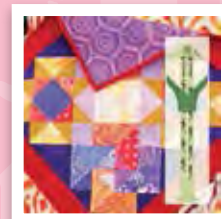


Eleanor Burns has directed her engineering skills to her new "best friends" the amazing Go! Cutters. Watch Eleanor's tried and true methods for accurate cutting using "smart stacking" and "smart cutting"! See examples on how to set up your AccuquiltGO work area for efficient production. See how easily blocks can be cut—less than half an hour from cutting to sewing.

I605 What's In Your Creative Tool Box?

Steve Butler, Clover USA

THU (#1605A) 1:30 PM
FRI (#1605B) 3:30 PM
SAT (#1605C) 1:30 PM
ROOM C, SHOWPLEX



You are creative—whether you are a quilter, garment sewer or everything in between. Steve will demonstrate how to effectively use the newest tools and notions to enhance that creativity. The Carefree Curves templates and the No Hassle Triangle gauge are a few of the tools that will make your life easier and faster! Steve will also show you some of the other new tools that can help bring a finished look to your project.

I606 Say Yes to the Fit Dress

Karen Campbell, Wild Ginger Software, Inc

THU (#1606A) 3:30 PM
FRI (#1606B) 9:30 AM
SAT (#1606C) 3:30 PM
SUN (#1606D) 9:30 AM
ROOM C, SHOWPLEX



Fit garments and style muslins are cheap, easy, and quick to make but are so critical before cutting your fashion fabric! Learn what a fit garment is and what measurements are needed to get started. Using fit garments you can discover how much ease you like or need in a garment, or how different styles fit your body. Learn to identify how the measurements relate to each other and how padding is distributed. Karen will show both dress and pant fit garments and how to evaluate and note changes.

1607 Trendy Sweatshirt Transformations Round 2

Barbara Crawford, Crawford Designs /
"Sewing Made Simple" Patterns

THU (#1607 A) 12:30 PM
FRI (#1607B) 9:30 AM
SAT (#1607C) 12:30 PM
SUN (#1607D) 9:30 AM
ROOM G, SHOWPLEX



Barbara is back with even more ideas to modify a standard sweatshirt to construct a slimming jacket. Learn to incorporate home dec fabrics, add closures, pockets, collars and more. Create a whole new look with the snap of your fingers.

1608 Sew Like A Pro

Connie Crawford, Fashion Patterns by Coni

THU (#1608A) 3:30 PM
SAT (#1608 C) 3:30 PM
ROOM E, SHOWPLEX



Hear the inside scoop for tips and techniques used in the garment industry to sew fast and achieve professional results. Discover efficient cutting techniques, notching, crimping vs. ease stitching and fast easy placket techniques. Learn how to produce smooth sleeve caps, which is the best foot for zippers and gathering, perfect topstitching, setting invisible and mock fly zippers, insert pockets, along with fail proof methods for working with slippery fabrics or fabrics with pile.

1609 Inside Tailored Jackets

Connie Crawford, Fashion Patterns by Coni

FRI (#1609B) 1:30 PM
SUN (#1609D) 1:30 PM
ROOM E, SHOWPLEX



Lined jackets are more comfortable, easier to wear and will last much longer. Learn how to build shape and support into the jacket with tailoring methods from the garment industry. Discover how to adjust the lining pieces to fit correctly and the easiest method to insert a lining by machine with no hand sewing. Insert a sleeve with no puckers; or add a welt pocket quick and easy. With these industry shortcuts you will be able to construct a lined jacket in one day. Reference Butterick Patterns B5336, B5720 or B5574.

1610 Blown Out of Proportion

Louise Cutting, Cutting Corners, Inc

THU (#1610A) 2:30 PM
SAT (#1610C) 2:30 PM
ROOM B, SHOWPLEX



Learn what proportions work best for pants, skirts, & sleeves; how to select the most flattering neckline and learn where the best placement for buttonholes is for you. You already have great patterns, now use them to create variations...a blouse can become a jacket, a shell can become a dress, a pullover top can now have a front opening. Don't be afraid to cut across the 'big black line'. Learn how small adjustments on your patterns will make you look like a 'class act'...with a few proportion issues solved while still in the pattern, garment sewing becomes FUN again.

1611 Know Your "Half" Measurements

Louise Cutting, Cutting Corners, Inc

FRI (#1611B) 2:30 PM
SUN (#1611D) 2:30 PM
ROOM B, SHOWPLEX



You've always been told to measure completely around the body but, patterns are drafted with front and back pattern pieces. Using "half" measurements, Louise will share easy to follow changes in patterns that can make your garments fit better. Students will receive 'mini-pats' (quarter size scale of a front and a back) to address how measurements and sizing needs to be added or altered.

1612 Embroidery Designs Made Easy

John Deer, John Deer's Adorable Ideas

THU (#1612A) 11:30 AM
SAT (#1612C) 11:30 AM
ROOM E, SHOWPLEX



Being an artist or a computer geek is not prerequisite for digitizing. All you need is a bit of time and the right teacher! Digitizing software may have changed over the years but the theory and properties of stitch types has remained constant. By starting with a simple foundation anyone can learn and quickly excel at the art of creating designs. Let John take the fear out of digitizing (no matter the brand) so you are able to get the most out of your investment and have fun doing it!

1613 Making You and Your Embroidery Machine Sew Happy!

John Deer, John Deer's Adorable Ideas

FRI (#1613B) 2:30 PM
SUN (#1613D) 2:30 PM
ROOM E, SHOWPLEX

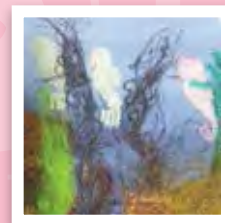


A "happy" embroidery machine purrs like a kitten when you feed it a "good" design, it can also growl like a dog. John will explain the difference between "what makes a design good or bad". You will learn recipes for avoiding frustration that will quickly help you identify if it's... you, your machine or simply a bad design! By following simple repetitive rules before you start stitching your design you will be able to assess problems before they occur!

1614 Fuse, Iron & Embellish (No Sewing Required!)

Beryl Emberson-Nash, Bo-Nash (North America Inc)

THU (#1614A) 2:30 PM
FRI (#1614B) 12:30 PM
SAT (#1614C) 2:30 PM
SUN (#1614D) 12:30 PM
ROOM L, VIP



Beryl will walk you through fun and easy techniques using "Fuse It" powder and other adhesives. Learn the easy way to apply lace, foil and glitter to your projects, adding a bit of bling and sparkle. See how you can restore an heirloom quilt where the fabric is missing or repair a hole in your jeans!

1615 Specialty Threads For Garments, Crafts and Other Projects

Nancy Goldsworthy, Wonderfil

THU (#1615A) 3:30 PM
SAT (#1615C) 3:30 PM
ROOM L, VIP

Nancy will walk you through the world of today's specialty threads. See what a difference picking the right thread can make. What can you use for a sheer blouse? How about that slippery satin? What give us the best results on cottons and other craft fabrics? Tips for picking not only the threads, but also the needles to go with them will be covered.



1616 Batting: Not Just For Quilts Anymore!

Nancy Goldsworthy, Wonderfil

FRI (#1616B) 8:30 AM
SUN (#1616D) 8:30 AM
ROOM G, SHOWPLEX

New to quilting? Making your first bag? Want to add some dimension to your next garment? This is the class for you. Nancy will walk you through the options currently available in batting and guide you to the perfect choice for your next project.

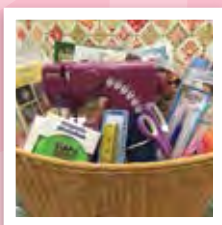


1617 Best Tools and Notions of the Trade

Geri Grasvik, The Pine Needle

THU (#1617A) 8:30 AM
SAT (#1617C) 8:30 AM
ROOM D, SHOWPLEX

Get great results by using the right tools! Each year the sewing industry creates new tools to simplify your needs. Join Geri as she walks you through *the best* of the best tools. From the latest rulers, cutting tools and the newest notion, see how using the right tool will save you time and money. Geri will help you navigate through the wide array of notions so you can select the right tools for your projects.



1618 Flannel For All Seasons!

Geri Grasvik, The Pine Needle

FRI (#1618B) 8:30 AM
SUN (#1618D) 8:30 AM
ROOM D, SHOWPLEX

Don't let this wonderful fabric intimidate you! Let Geri share her vast knowledge of flannel facts: washing and care (will it shrink), is there a fabric brand better than others, should batting be used and so much more! Learn all of the ins and outs of this cozy, luxurious fabric. A variety of items will be shown to inspire you for your next flannel project.

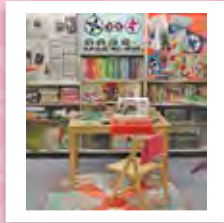


1619 DIY Your Dream Sewing Space

Chris Groce, Pacific Fabrics

THU (#1619A) 12:30 PM
FRI (#1619B) 9:30 AM
SAT (#1619C) 12:30 PM
SUN (#1619D) 9:30 AM
ROOM L, VIP

Do you have all the latest equipment in your sewing room but can't seem to find your seam ripper? Join Chris and get ready to create the sewing space of your dreams. She'll share ideas for creative storage containers along with the latest designs for creating a beautiful working environment. You'll learn tips and projects to help you get organized. So you can stay organized wherever you go, Chris will also show you great bags for your take-along projects.

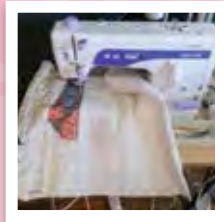


1620 The Reversible Dimension

Mary Grover, Quilting On The Grid, LLC

THU (#1620A) 10:30 AM
SAT (#1620C) 10:30 AM
ROOM D, SHOWPLEX

If you can follow a straight line using your sewing machine, you can quilt beautiful, reversible quilts!! Mary has taken the fear out of the quilting process and put the fun back in! If you can follow a straight line, you can quilt using the patented Quilting On The Grid™ method. Quilts as well as wall hangings, table runners, and mug rugs are just some of what you can make. Because this method is easier, quicker and less expensive than traditional quilting, you will gain satisfaction by completing more projects to share with your family and friends—an ideal way to make many gifts throughout the year or to produce quilts to display and use throughout your home.

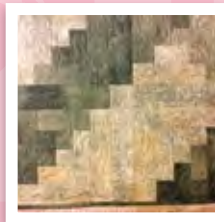


1621 Creating Custom Designs for Your Machine Embroidered Quilts

Rita Guzzard, Rita's Best Designs

THU (#1621A) 11:30 AM
FRI (#1621B) 4:30 PM
SAT (#1621C) 11:30 AM
ROOM G, SHOWPLEX

You have an embroidery machine and you have software. You have dreams of creating wonderful, custom designs but you are mystified what the next steps are. Let Rita be your guide as she shares her tips and techniques to start your way to create simple designs, appliqué and custom quilting with any software program.

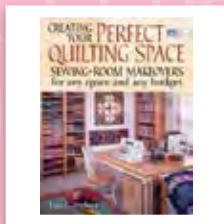


1622 Create Your Perfect Quilting Space

Lois Hallock, Clearview Designs

THU (#1622A) 4:30 PM
SAT (#1622C) 4:30 PM
ROOM C, SHOWPLEX

Release your creativity by improving your quilting space! Be inspired by quilt studio design and layout makeovers. Lois will share the latest organizing tips without downsizing your stash and will share ergonomic solutions to increase your energy that will allow you to create more quilts. Leave with inexpensive ideas to immediately help you enjoy your quilt studio to the fullest!



1623 Quilt and Craft Studio Ergonomics

Lois Hallock, Clearview Designs

FRI (#1623B) 8:30 AM
SUN (#1623D) 8:30 AM
ROOM C, SHOWPLEX

Poor ergonomics leads to fatigue, pain, and injury. If after just a short while of sewing, you find yourself hunched over your machine with your back, neck, and shoulders aching, you may have poor ergonomics at your sewing table. Long armers who work at their machines for personal use or business are at great risk from poor ergonomics. You will walk away with ideas to use right away.

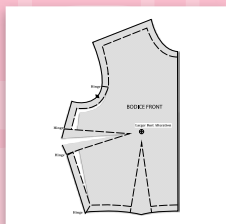


1624 Pattern Alteration SOS (Swivel Our Seams)

Lorraine Henry, LH Enterprises

THU (#1624A) 10:30 AM
SAT (#1624C) 10:30 AM
ROOM G, SHOWPLEX

If you are tired of cutting your pattern into puzzle pieces and trying to put it back together to make it "kind of fit, have an "Ah-HA" visual experiences. Watch how seams can "swivel" to enlarge or shrink for the bust, widen or narrow for the back, and work in combinations without causing any distortion in the pattern. Learn how to create hinges and swivel your seams to meet the needs of YOUR personal shape!

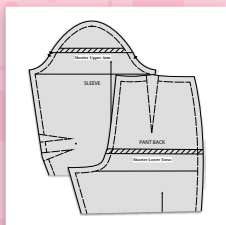


1625 The Three Crotch Figure!

Lorraine Henry, LH Enterprises

FRI (#1625B) 1:30 PM
SUN (#1625D) 1:30 PM
ROOM G, SHOWPLEX

All figures have three crotches. Two arm crotches and one lower torso crotch. Fitting them all has great similarities. Come learn what measurements are in direct relationship to one another in these areas. Learn figure variations that apply to each and how correct measurements will show you where to do the alterations for a better fit.



1626 Tailoring: Before You Cut

Marla Kazell, Marla Kazell

THU (#1626A) 11:30 AM
SAT (#1626C) 11:30 AM
ROOM B, SHOWPLEX

Before you cut and sew your next jacket, discover how appropriate planning and refining the details of your pattern will improve the final results. Learn about hem allowances, turn of the cloth, button size/overlap width, off-graining and drafting or adjusting lining pattern pieces. With these changes and you will sew great looking jackets and coats.

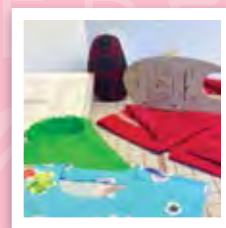


1627 Pro Tips

Marla Kazell, Marla Kazell

FRI (#1627B) 3:30 PM
ROOM B, SHOWPLEX

In any garment you sew, the details are important in the finished appearance and in every choice and decision made along the way. Take advantage of Marla's 30+ years as a professional dressmaker as she shares her experience and expertise. From tools to techniques, from necklines to hems, get tips on pattern adjustments, sewing techniques and pressing that will improve your skills and the final appearance of your garments.



1628 Transform the Neckline & Cash In on a New Look

Judy Kessinger, FitNice, LLC

THU (#1628A) 3:30 PM
SAT (#1628C) 3:30 PM
ROOM G, SHOWPLEX

Learn the easy ways to take a basic tee, change the neckline and amaze yourself with a new wardrobe of style! Easy ways to create cutouts, achieve the asymmetrical fashion, craft a built in scarf effect, produce the slimming but soft V and form the ever loving scoop necklines. It will inspire a new love of sewing!

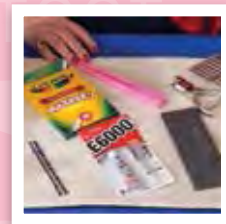


1629 UnNecessary Notions

Judy Kessinger, FitNice, LLC

FRI (#1629B) 10:30 AM
SUN (#1629D) 10:30 AM
ROOM B, SHOWPLEX

We all love to collect nifty little tools. Watch as Judy demonstrates how to use those tools to make your sewing easier. They will no longer be unnecessary. Start with all the gluing tricks—she will even show you how to "glue" in zippers for perfect stitching. End with the greatest tool for trim placement every time.

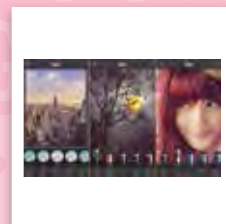


1630 Utilizing your Photos for Social Media & Beyond!

Stephanie Kleinman, Fabric Studio

THU (#1630A) 9:30 AM
FRI (#1630B) 2:30 PM
SAT (#1630C) 9:30 AM
SUN (#1630D) 2:30 PM
ROOM D, SHOWPLEX

Once you mastered the art of picture taking with your phone or tablet, you will be ready to learn more advanced editing apps and take advantage of the world of Social Media. Facebook, Instagram, and other social media sites will be discussed. Explore the realm of turning these photos into projects and potentially selling some to online sites. See what's available on the market for printing your photos and turning them into personal keepsakes. Both Android and Apple systems will be discussed. Don't forget to bring your phones or tablet.

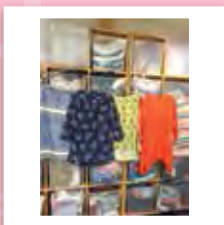


1631 Everything You Need to Know to Start Sewing with Patterns

Deborah Kreiling, *Simplicity Patterns*

THU (#1631A) 1:30 PM
SAT (#1631C) 1:30 PM
ROOM B, SHOWPLEX

Starting to sew garments may feel like learning a new language! Let Deborah Kreiling from Simplicity Patterns be your mentor as she explains how to choose the right pattern designs for beginners, how to read the front and back of the pattern envelope and how to correctly measure yourself to select the right pattern size. And, as you pull out the pattern from the envelope, she will familiarize you with what to expect, how to use the pattern guide and what all the pieces of paper and the markings on them mean.

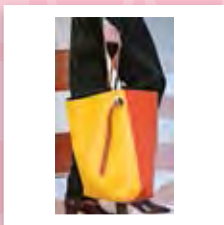


1632 Dynamic Easy Totes

Cheryl Kuczek, *Paradiso Designs/Quiltworks Northwest*

THU (#1632A) 9:30 AM
SAT (#1632C) 9:30 AM
ROOM E, SHOWPLEX

A typical one piece tote bag on its own can be boring. View four variations of simple to sew totes that are stunning to look at and fun to use. Learn how elements of design proportion play an important role in how a bag looks.



1633 Pattern Hacks

Cheryl Kuczek, *Paradiso Designs/Quiltworks Northwest*

FRI (#1633B) 1:30 PM
SUN (#1633D) 1:30 PM
ROOM D, SHOWPLEX

Take an original frock/dress pattern and see how to make it the base for new designs. Watch the evolution of adding and subtracting details to get new looks. It is amazing the difference a small change can make to achieve something new! And that is Pattern Hacking.

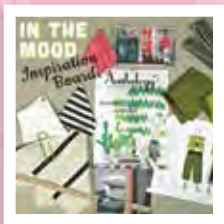


1634 Storyboard of Inspiration

Linda Lee, *The Sewing Workshop*

THU (#1634A) 12:30 PM
FRI (#1634B) 4:30 PM
SAT (#1634C) 12:30 PM
ROOM E, SHOWPLEX

Learn how to build storyboards to use as wardrobe planning tools. Use modern media sources such as magazines, catalogs and the internet in a new way. Look at beautiful photos of interiors, food, landscapes, and fashion in a different way as ideas for your own wardrobe. Instead of sewing miscellaneous pieces, put a plan in place to create ensembles that you never imagined.

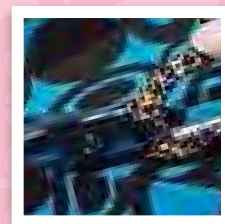


1635 Design Details

Pamela Leggett, *Pamela's Patterns*

THU (#1635A) 1:30 PM
SAT (#1635C) 1:30 PM
ROOM E, SHOWPLEX

Are you ready to make that perfect garment but afraid that it will look homemade? The difference between "just OK" and "fabulous" are often simple techniques in stitching, pressing, and products. This class will show you tricks-of-the-trade to make your garments look polished and better than ready-to-wear. Whether using knits or wovens, you can master designer hems, serged French seams, perfect darts, collars, smooth facings, sew-in elastics, and more.



1636 Serger Techniques and Trunk Show

Pamela Leggett, *Pamela's Patterns*

FRI (#1636B) 8:30 AM
SUN (#1636D) 8:30 AM
ROOM E, SHOWPLEX

Pamela will show you how to incorporate basic and decorative serger skills into your wardrobe, such as flatlock, rolled hems, decorative edging, coverstitch and more. Take the fear out of using your serger for more than just seams. Bonus - you'll get free instructions on how to create Pamela's favorite vest - perfect for layering under jackets for extra warmth or worn as a fashion accessory!

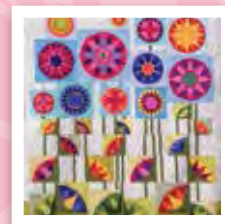


1637 Strip Pieced Mariner's Compass (No Paper Piecing!)

Robin Long, *Pacific Fabrics*

THU (#1637A) 9:30 AM
FRI (#1637B) 1:30 PM
SAT (#1637C) 9:30 AM
SUN (#1637D) 1:30 PM
ROOM L, VIP

You'll love Robin's methods for making 16 point compass blocks in different sizes using special rulers and strip piecing! Enjoy lots of great tips for block finishing, compass centers and sewing a round compass block into a square. Robin's terrific tips will be the perfect inspiration for your own modern or traditional Mariner's Compass project!



1638 Sparkle It Up!

Cindy Losekamp, *Sew Artfully Yours*

THU (#1638A) 8:30 AM
SAT (#1638C) 8:30 AM
ROOM L, VIP

Add a little sparkle to your garments. Admit it... we're all drawn to things that shine! Cindy will cover how to make and apply crystal studded iron-ons, how to use new iron-on glitter and holographic vinyls to create your own amazing wash-and-dry wearables. Learn how to use a cutting machine to speed up your embellishing fun with easy appliqué shapes you can send to your machine. Handouts provided.



1639 Make it Your Own!

Cindy Losekamp, *Sew Artfully Yours*

FRI (#1639B) 11:30 AM
SUN (#1639D) 11:30 AM
ROOM L, VIP

The hot trend for today is “making it your own”. Pinterest is full of ways to give you ideas for doing this very thing. Cindy will show how using machine embroidery you can create something special using anything from plain garments, to reclaimed or vintage items, blankets, jeans, sweaters and more. Create using a small hoop all the way up to the largest hoops. If you’re just thinking about purchasing an embroidery machine, this is a great class to see what can be done. Join Cindy to learn the easiest methods to create original customized and personalized items.

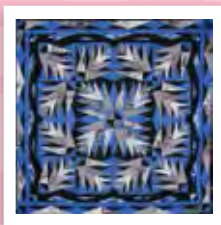


1640 Dancing on the Border

Julie Luoma, *Off the Wall Quilt*

THU (#1640A) 3:30 PM
FRI (#1640B) 1:30 PM
SAT (#1640C) 3:30 PM
SUN (#1639D) 1:30 PM
ROOM B, SHOWPLEX

Have you ever wished you could add just a little “something” to spice up your quilts? A sprinkle of pizzazz or a sassy twist? Let’s explore some simple ways to “salsa” or “rumba”, add romance and “cha-cha” our way to the end of our quilts. If nothing else, you’ll learn how to strip-tease and dance along those borders!

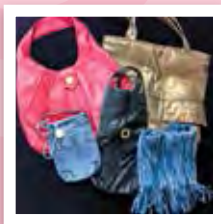


1641 Ultimate Upcycles

Marsha McClintock, *SAF-T-POCKETS*

THU (#1641A) 8:30 AM
SAT (#1641C) 8:30 AM
ROOM B, SHOWPLEX

Upcycling is described as reusing a material without degrading the quality of the material for its next use. Marsha will show you how to take old leather coats, jeans, and dress shirts and give them new lives. See how to turn a dress shirt into several useful items. Then take an old leather jacket and turn it into accessories like jewelry, tote bags, and trims. You will see accessories made from an old t-shirts and jeans. After this class you will start looking at your families’ old clothes in a whole new way.



1642 On the Flip Side

Marsha McClintock, *SAF-T-POCKETS*

FRI (#1642B) 12:30 PM
SUN (#1642D) 12:30 PM
ROOM B, SHOWPLEX

Reversible clothing provides two unique looks in just one garment. Save time in construction by eliminating facings, linings and handwork. Maximize sewing time and free up space in your closet or suitcase. Learn how to select the right patterns for reversible clothing, see the best fabrics and construction tips that make it all work. See pockets that flip from side to side, garments that always button on the correct side, reversible garment from a single layer of double-sided fabric plus lots more creative ideas.



1643 Just WHAT IS Terial Magic

Terry McFeely, *Terial Arts*

THU (#1643A) 2:30 PM
FRI (#1643B) 11:30 AM
SAT (#1643C) 2:30 PM
SUN (#1643D) 11:30 AM
ROOM D, SHOWPLEX

Terial Magic™ is just that! Magic! Terry will give a creative lecture on how to use this fabric stabilizer to create everything from fabric art to home décor. You can use this fabric stabilizer to create beautiful fabric flowers without the fray! It is also quickly becoming the stabilizer of choice for all embroidery, electronic cutting, tee shirt quilting and inkjet printing, to name just a few of its uses.

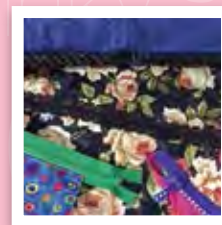


1644 Zip to It

Linda McGehee, *Ghee's*

THU (#1644A) 9:30 AM
SAT (#1644C) 9:30 AM
ROOM G, SHOWPLEX

Tired of being hidden and ignored, the zipper is exposed as a truly versatile embellishment. Let the zipper make a statement on your next project. Don't use a zipper foot! There are new and different applications. Use zippers as trim, artwork, jewelry, and places that you never would have used a zipper. Included are at least 5 easy ways to insert a zipper. There are lace zippers, designer tape zippers, metal look-a-like zippers, and rainbow zippers. Quick, easy, and fun projects! You'll even learn how to fix a zipper, too!

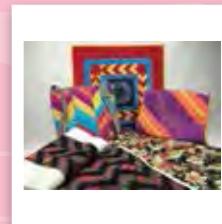


1645 More Angles in Piecing

Linda McGehee, *Ghee's*

FRI (#1645B) 2:30 PM
SUN (#1645D) 2:30 PM
ROOM G, SHOWPLEX

Like Log Cabin Piecing, Spiral Patchwork has many options from a very simple, basic beginning. It's a quick strip piecing technique with a twist to create a multitude of designs. Cut your own or choose from jelly rolls or other precut strips. Choose bold colors to punchy patterns to sweet designs or hand dyes or stripes. This technique of piecing is fun and fantastic to use on garments, bags, home dec, quilts, and more. Bring your sense of adventure.



1646 Stash Buster Plus More Bang for the Buck!

Marti Michell, *Michell Marketing*

THU (#1646A) 8:30 AM
SAT (#1646C) 8:30 AM
EXPO RUNWAY, PAVILION (2ND FLOOR)
FRI (#1646B) 11:30 AM
SUN (#1645D) 11:30 AM
ROOM B, SHOWPLEX

Come and enjoy Marti's scrap quilt trunk show and hear her favorite tips for multi-fabric quilts. How to “shop at home”, efficient cutting of scrap quilts and keeping scrap quilt designs under control are just some of the topics she will touch. Just as you want to use the fabrics you own, Marti provides clues for matching templates that you own with quilts you want to make.



1647 Sew Your Own Swimsuit – Fearless & Fun Techniques!

Annette Millard, *Pacific Fabrics*

FRI (#1647B) 10:30 AM
SUN (#1647D) 10:30 AM
ROOM C, SHOWPLEX

Dive into sewing your own suit with Annette's fearless methods for both sergers and sewing machines! Whether you love Retro, Basic or Modern styles, you'll find these tips and basic techniques make swimsuit sewing fun, easy and full of possibilities. You'll learn the basics of fitting, how to use fabrics, linings, and patterns and which tools and notions will make your swim sewing life easiest. Bra cup techniques will not be included, but an easy substitute will be shown.

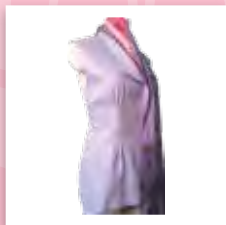


1648 Shape Up Those Garments

Sandra Miller, *Cutting Corners*

THU (#1648A) 4:30 PM
SAT (#1648C) 4:30 PM
ROOM G, SHOWPLEX

We all have baggy shirts, too-long (or too-short) pants, and boxy jackets hiding in the back of our closets. If those garments were a bit more form-fitting, we could enjoy wearing them. Sandy will show you how to use tucks, darts, casings, ties, and tabs to bring new shape to those garments. She'll discuss measuring and sewing techniques that will provide new design ideas as well as a more refined fit.



1649 The Professional Touches

Sandra Miller, *Cutting Corners*

FRI (#1649B) 3:30 PM
ROOM G, SHOWPLEX

Have you avoided those beautiful shirts showcased in fashion magazines and websites? Details like collar bands, sleeve plackets, and cuffs can seem pretty challenging, but they're not so difficult once you've seen how to handle them step by step. Learn how to master the details of a classic shirt that you can make in every fabric from flannel to silk. Get professional-looking finishes in a style that will be a mainstay of your wardrobe.

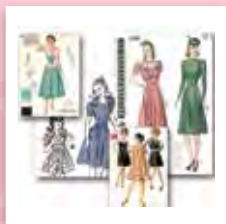


1650 The Vintage Pattern Collection

Laura Nash, *Sew Chic Pattern Co.*

THU (#1650A) 8:30 AM
SAT (#1650C) 8:30 AM
ROOM C, SHOWPLEX

Are you in love with second hand patterns but wonder if they are worth the expense? Learn what to expect from these special flea market finds as we walk through each general era to see how they differ from modern patterns in terms of technology, fit, sizing, printing, and sewing technique to help you invest online with confidence.



1651 Success with Etsy

Laura Nash, *Sew Chic Pattern Co.*

THU (#1651A) 1:30 PM
ROOM L, VIP

FRI (#1651B) 10:30 AM
SUN (#1651D) 10:30 AM
ROOM G, SHOWPLEX

Are you a designer, artist or crafter thinking about selling online? Whether you already have a shop and are wondering how to proceed—or just considering your options—discover the basics necessary for getting an *Etsy* shop up and running, and choosing methods for positioning your shop and products in the marketplace. Find out the rules and resources available to you, along with the necessary strategies to get people shopping—and keep them coming back for more!

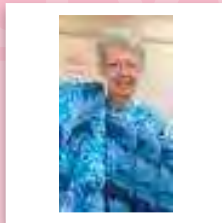


1652 Find Your "Handsome Prints"

Nancy Nix-Rice, *Nancy Nix-Rice Style Consulting*

THU (#1652A) 12:30 PM
SAT (#1652C) 12:30 PM
ROOM B, SHOWPLEX

You'll sew happily ever after, when you learn the secrets to identify your "Prints Charming". Many prints are alluring on the bolt, but few of them actually optimize the appearance of the wearer. An excess of prints can leave you with a closet full of nothing to wear. But a GREAT print or two can anchor a wardrobe. Nancy's concept of "points of connection" can guide you directly to the specific prints that showcase your unique personal characteristics—color temperature, value, intensity and contrast, body scale, facial structure, personal texture, fashion personality.



1653 Sew a Wardrobe in a Weekend

Nancy Nix-Rice, *Nancy Nix-Rice Style Consulting*

FRI (#1653B) 8:30 AM
SUN (#1653D) 8:30 AM
ROOM L, VIP

No more closet full of nothing to wear! Learn the savvy selection and planning techniques that let you sew 12 garments to create up to 96 outfits in just a few days. Develop a unified color scheme to flatter you and maximize the mix/match potential in your closet. This wardrobe formula can be easily adapted for women of any age, dress size, lifestyle or climate.

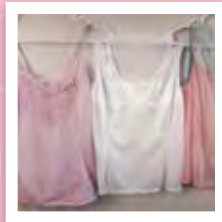


1654 Classy Camisoles

Monica O'Rourke Bravo, *BravoBella*

THU (#1654A) 12:30 PM
SAT (#1654C) 12:30 PM
ROOM C, SHOWPLEX

Camisoles are an essential and versatile element of every wardrobe. You can have as many styles as you can dream up using variations on a basic pattern. Learn how to choose a pattern based on measurements. Use two different techniques to create a full bust adjustment for a perfect fit. Learn how to choose fabrics based on your desired look then adjust with a variety of different necklines, straps, and hem finishes. Monica will even show how to put a great fitting bra right into your camisole!



1655 Panties

Monica O'Rourke Bravo, BravoBella

FRI (#1655B) 1:30 PM
SUN (#1655D) 1:30 PM
ROOM C, SHOWPLEX

Every girl needs a pair of panties to match her outfit! You will learn how to take your favorite pair of panties and copy them to make a pattern without taking them apart! Once you know how to create your pattern, Monica will demonstrate quick and easy techniques to cut out and sew them. You will also learn a variety of finishes to make your britches as fancy as you like 'em!!!



1656 Upcycle Sewing!

Michelle Paganini, Paganoonoo

THU (#1656A) 2:30 PM
FRI (#1656B) 4:30 PM
SAT (#1656C) 2:30 PM
ROOM C, SHOWPLEX

Upcycle sewing is different than sewing with flat cloth. The starting materials are previously owned garments, there are no pattern pieces to print, cut out, and then pin to garments. Watch the steps for transforming three men's shirt into a beautiful woman's blouse. See a trunk show of upcycled creations and receive a tip sheet filled with simple upcycling techniques.

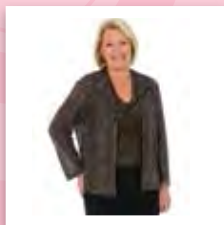


1657 How to Fit Any Pattern in a Knit vs. a Woven Fabric

Pati Palmer, Palmer/Pletsch Publishing

THU (#1657A) 9:30 AM
SAT (#1657C) 9:30 AM
ROOM B, SHOWPLEX

If your knit stretches to fit the stretch gauge on the envelope and you are the exact measurements for your size, you could sew the garment without any fitting—supposedly. Patterns for knits or woven fabrics are interchangeable. Pati will share her sewing tips for successful garment construction no matter the pattern or fabric. The sweater Pati is wearing in this photo is a sweater knit made using her blouse pattern for wovens.



1658 Tissue-Fitting Method for Pants and Tops

Pati Palmer, Palmer/Pletsch Publishing

FRI (#1658B) 9:30 AM
SUN (#1658D) 9:30 AM
ROOM B, SHOWPLEX

Pati Palmer and Melissa Watson have developed a new line of patterns for McCall's that will use all of their latest techniques for tissue-fitting. Pati will show the first designs from the new pattern line and how to use the designs to help you learn to fit yourself. Buying the right size may be different than what you are used to. She will cover both darted and princess designs for bust alterations as well as tissue-fitting pants.

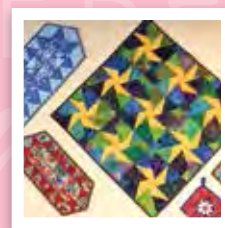


1659 Cool Quilting Tools!

Sandi Pickering, Calico Threads

THU (#1659A) 4:30 PM
FRI (#1659B) 12:30 PM
SAT (#1659C) 4:30 PM
SUN (#1659D) 12:30 PM
ROOM D, SHOWPLEX

Just like any craftsman, having the proper tools makes the job easier! Come learn about the "cool new tools" that will make your quilting a breeze! Sandi will share tips and tricks that will make your quilts turn out beautifully!

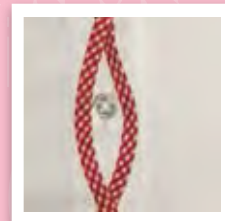


1660 Beguiling Bias: A Taste of Trim

Vaune Pierce, Vaune

THU (#1660A) 10:30 AM
SAT (#1660C) 10:30 AM
ROOM L, VIP

Bias trim has become a favorite of top designers. Tommy Hilfiger uses madras plaid bias to cover seams and bias strips to create designs on t-shirts and blouses. In this class, you will learn fun and functional ways to use bias on your garment. Learn how to choose the correct fabric type for each application, and why it makes a difference. See different methods of making bias binding; shaping bias; creative ways to attach bias shapes; and spaghetti bias options for fun and function.

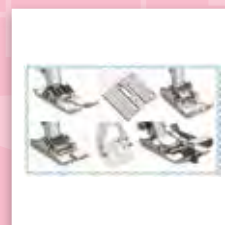


1661 Five Feet and How to Use Them!

Vaune Pierce, Vaune

FRI (#1661B) 2:30 PM
SUN (#1661D) 2:30 PM
ROOM L, VIP

The original sewing machine could do one thing: sew forward. Today's basic sewing machine is capable of doing so much more! Different feet can make simple tasks quick and easy. Many of the feet that were designed for specific uses can be used for other techniques too. See how the standard uses of five feet can do so much more!



1662 Teaching Teens to Sew: Projects & Tools They'll Love!

Toni Preston, Pacific Fabrics

THU (#1662A) 3:30 PM
SAT (#1662C) 3:30 PM
ROOM D, SHOWPLEX

Do you know a teen that's ready to sew, but you're not sure how to help them start? Toni will show you easy techniques, skills, tools and resources that will help you make sewing fun, easy to learn and interesting for the teens of today. You'll learn about quick and simple projects teens will love, including clothing and quilt projects, modern embroidery, totes, bags, pillows and tablet covers. Add your own enthusiasm for sewing to the teens you know!

1663 Costuming Basics: To Conventions & Beyond

Toni Preston, *Pacific Fabrics*

FRI (#1663B) 4:30 PM
ROOM D, SHOWPLEX

Anime and Comic Book Conventions are a popular venue for kids and adults who love to dress in costume to enhance the fun—but where do you start? Whether you have basic or advanced sewing skills, Toni will send you home with lots of tips and great ideas on how to create costumes for Cosplay and the Cons with limited time, money and space.

1664 You Don't Have to Be a Size 6 to Look Great in Your Clothes

LoriAnne Reeves, *LoriAnne Pattern Collection*

THU (#1664A) 2:30 PM
FRI (#1664B) 3:30 PM
SAT (#1664C) 2:30 PM
ROOM E, SHOWPLEX



This is the missing piece in accommodating your body shape, proportion and fit to create garments that flatter you. It's the integration of all three that helps flatter you no matter your size or shape. Learn which measurements are truly important in determining a great looking garment that also gives you the comfort you're looking for. Create the styles that are most flattering to you!

1665 Quick Gifts From Your "Scrap" Stash

Cindy Rowell, *Wonderfil Speciality Threads*

THU (#1665A) 8:30 AM
SAT (#1665C) 8:30 AM
ROOM G, SHOWPLEX



Cindy shares creative ways to utilize your mountain of scraps in ways other than quilting. If you are looking for ways to reduce your scrap pile and want some quick gift ideas, this is the class for you! Cindy has gathered her favorite old and new projects along with some unique sewing tips and techniques that will save your time and money. All of Cindy's gift projects are fast and easy to make.

1666 Threaducation 101

Cindy Rowell, *Wonderfil Speciality Threads*

FRI (#1666B) 12:30 PM
SUN (#1666D) 12:30 PM
ROOM G, SHOWPLEX



Are you confused with all the different threads on the market? Why do we have different weights of thread? Why use cotton thread rather than a cotton combination thread? Did you know that each type of thread has a specific use and creates a specific look? In this class Cindy will "Threaducate" you by introducing you to a variety of Wonderfil Specialty threads. You will learn about the process of making thread and why there are so many different types of threads to choose from.

1667 The Sheath Dress and Upper Body Fit

Kathy Ruddy, *kathyruddy.com*

THU (#1667A) 10:30 AM
SAT (#1667C) 10:30 AM
ROOM B, SHOWPLEX



The sheath dress has never been trendier! Explore pattern selection and ways to camouflage what you like least about your figure. Kathy's approach to upper body fit includes armhole, sleeve, bust and shoulder angle corrections, and adding details that make you look younger and slimmer. See fast construction techniques for a fully lined dress with or without sleeves, and discover a super-easy zipper closure.

1668 How to Use Elastic for Comfortable Clothes!

Kathy Ruddy, *kathyruddy.com*

FRI (#1668B) 4:30 PM
ROOM B, SHOWPLEX



Elastic is the secret ingredient to making your patterns easier to sew and fit. Kathy will show you eight ways to use elastic that improves comfort, fit and makes construction easier. This will include adjusting patterns to eliminate waistbands and zippers, measuring, and installing elastic into pants, skirts, and shorts.

1669 Fitting Yourself, by Yourself

Peggy Sagers, *Silhouette Patterns, Inc*

THU (#1669A) 12:30 PM
EXPO RUNWAY, PAVILION (2ND FLOOR)

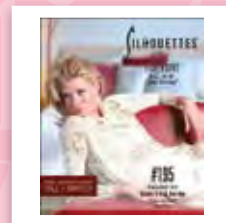


So many of us are told that we have to have a fitting buddy, and our husbands just don't cut it. Not true. If we know the fitting principles and understand the very definition of fit, we can and will learn to fit ourselves. It is easy, just come learn how!

1670 One Pattern, A Dozen Looks

Peggy Sagers, *Silhouette Patterns, Inc*

FRI (#1670B) 12:30 PM
EXPO RUNWAY, PAVILION (2ND FLOOR)

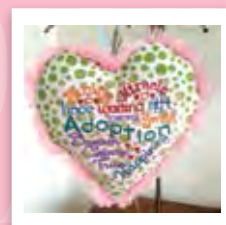


So many changes that will give us a completely different look. Learn how a great base and simple changes to pattern and fabric give us a different look each time we sew. Using one pattern over and over will simplify our time spent with fit and will expedite our output of great garments to wear. The more we utilize one pattern, the more time we can spend on sewing beautiful garments.

1671 Subway Art with Machine Embroidery

Lisa Shaw, *Bubbles Menagerie*

THU (#1670A) 10:30 AM
SAT (#1670C) 10:30 AM
ROOM E, SHOWPLEX



Let's use all those ideas collected from Pinterest to create embroidery versions of Subway Art! From birth announcements to teacher gifts—or whatever your passion—it is just way too easy and so much fun with machine embroidery software. We will cover tips and tricks to streamline the process so you can create stitched memories!

1672 Create with Machine Embroidery Software

Lisa Shaw, Bubbles Menagerie

FRI (#1672B) 11:30 AM
SUN (#1672D) 11:30 AM
ROOM E, SHOWPLEX

Machine embroidery software—like all things technical—has evolved over the years, but it can still be daunting. Let Lisa break down the process so understandable, you'll be on your way to create beautiful embroidery designs. It will be exciting to watch a design stitch out that you created. Begin your embroidery design journey as you learn how to lay out your plan, and explore style options such as appliqué, fills, outlines, motifs, and more!

1673 Thirty Minute Gifts, Fun and Fast!

Connie Spurlock, Sew Wonderful Dreams

THU (#1673A) 4:30 PM
FRI (#1673B) 8:30 AM
SAT (#1673C) 4:30 PM
SUN (#1673D) 8:30 AM
ROOM B, SHOWPLEX

What could be better than getting some great ideas for some quick gift projects? Ideas for the “techie”, the cook, the quilter and some extra generic projects when you just need a quick hostess gift. Get some tips and techniques that will give you faster and better results. See some new tools on the market that can assist you as well. You will love learning the “shortcuts” to fun sewing.

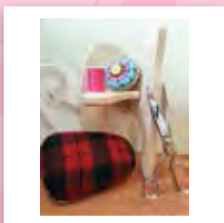


1674 The Dressmaker and Alterations Toolbox

Carol Steinbrecher, Style Solutions LLC

THU (#1674A) 4:30 PM
FRI (#1674B) 9:30 AM
SAT (#1674C) 4:30 PM
SUN (#1674D) 9:30 AM
ROOM E, SHOWPLEX

If you're starting out or have been sewing forever, this is a great time to catch up on what cool tools and notions are good to have in your sewing toolbox. Learn how to apply these tools, and why you need them if you are drafting your own patterns, altering patterns, altering garments already in your closet, or crafting your next brilliant project idea. Learn how these tools can save you time, money, and make your next project spectacular.

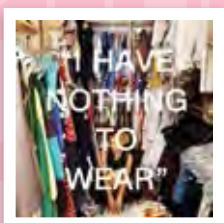


1675 Shop Your Closet and Fabric Stash

Carol Steinbrecher, Style Solutions LLC

THU (#1675A) 11:30 AM
SAT (#1675C) 11:30 AM
ROOM L, VIP

We all face the dilemma of standing in front of the closet and there is nothing to wear! Carol has the solution for you—“Shop Your Closet” and get organized so you will be ready for any occasion. Learn simple pairing techniques to create combinations you may have never thought of! Learn how to select shoes, handbags and accessories to complete a look. Learn what pieces to keep and what pieces to donate. Carol will share her fun technique of “Closet Outfit Photos” so you have something to reference back to. Finally, see how you can apply these techniques to your fabric stash as well.



1676 Make It Personal! Quick and Easy Gifts for Friends and Family

Lisa Shaw, Bubbles Menagerie

THU (#1676A) 12:30 PM
SAT (#1676C) 12:30 PM
ROOM D, SHOWPLEX

FRI (#1676B) 10:30 AM
SUN (#1676D) 10:30 AM
ROOM E, SHOWPLEX



Lisa will share quick and easy projects using personal photos and images to make one-of-a-kind gifts for that special someone. Start with photos of virtually anything—kids, pets, a memorable trip, or even flowers from the garden—and turn them into stunning works of art that will be treasured for years to come. From ornaments to bags and table runners to wall art, treat the special people in your life with gifts that have a personal touch!

1677 Easy Projects—and the Techniques That Make Them Even Easier!

Annie Unrein, ByAnnie.com LLC

THU (#1677A) 2:30 PM
SAT (#1677C) 2:30 PM
ROOM G, SHOWPLEX

From purses and placemats to lunch bags and travel accessories, you will discover terrific ideas for easy projects and gifts for all ages. Learn techniques that make these projects even easier from using the proper stabilizers to foolproof methods for installing zippers, working with vinyl and mesh; ideas for organizing your sewing and personal spaces; discover two awesome techniques for turning handles and straps and tips for adding hardware to make adjustable straps; how to make your own bias binding and binding raw edges.



1678 Zippers are EASY!

Annie Unrein, ByAnnie.com LLC

FRI (#1678B) 11:30 AM
SUN (#1678D) 11:30 AM
ROOM G, SHOWPLEX

Do zippers intimidate you? Do you shudder at the thought of adding a zipper to a purse or bag? Discover what makes handbag zippers different from other types of zippers. Annie will share her tips and tricks for installing zippers in purses and bags as well as pillows, slipcovers, and more; tricks for adding zippers to vinyl or mesh pockets and for installing zippers in pockets with curved edges; to mix and match colors of zipper tape and pulls to personalize and add interest to your project.



1679 Create Beautiful Buttons and Cabochons!

Fran Valera, Little Windows Brilliant Resin

THU (#1679A) 1:30 PM
FRI (#1679B) 10:30 AM
SAT (#1679C) 1:30 PM
SUN (#1679D) 10:30 AM
ROOM D, SHOWPLEX

Make your own buttons of any size using Brilliant Resin and the versatile new Cabochon Mold from *little-windows.com*! We'll reveal buttons made from everything in our goodies stash, and teach you how to make these for yourself or to sell!

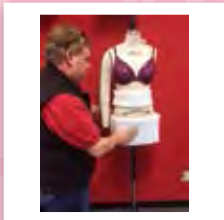


1680 How to Fit A Dress Form to Your Body Shape

Joseph Vecchiarelli, Fashion Supplies Inc.

THU (#1680A) 8:30 AM
SAT (#1680C) 8:30 AM
ROOM E, SHOWPLEX

When making a garment it becomes faster, more accurate than ever to create your fit on a dress form with easy placement of sizing material. Learn to make simple adjustments on the form to fit your shape instantaneously and eliminate the frustration of fitting the pattern to your shape. One dress form can become your body shape in seconds and make fitting faster and more accurate.

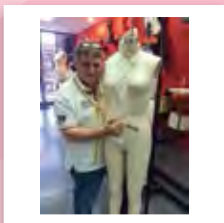


1681 From Dress Form Draping to Princess Lines

Joseph Vecchiarelli, Fashion Supplies Inc.

FRI (#1681B) 12:30 PM
SUN (#1681D) 12:30 PM
ROOM E, SHOWPLEX

Joe Vecchiarelli and Judy Kessinger have combined their talents to bring you a one-of-a-kind class. Start with Joe's dress form and learn how to drape the form to FIT your figure. Then Judy will show you how to create a princess pattern to FIT your comfort! Go from form to fashion with confidence in the fit and comfort of a garment.



1682 HAUTE Embroidery

Katrina Walker, Katrina Walker / Quality Sewing

THU (#1682A) 11:30 AM
SAT (#1682C) 11:30 AM
ROOM D, SHOWPLEX

Is your embroidery HAUTE? Learn the tips, tricks, and techniques you need to create beautiful embroidered apparel. Move beyond "patches" to create embroidery that flows with your creations. This information-packed seminar will take your fashion embroidery to a new level that is truly fashionable!



1683 Sewing for Style

Katrina Walker, Katrina Walker / Quality Sewing

FRI (#1683B) 9:30 AM
SUN (#1683D) 9:30 AM
ROOM D, SHOWPLEX

Take your sewing to a new, more fashionable level! Take your favorite designs, and make them truly fabulous with designer style elements. Get out of that design rut and open your eyes to new ideas in color, texture, and construction. Prepare to be inspired—you will want to RUN to your sewing machine after this seminar.

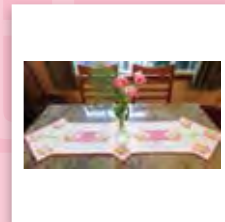


1684 Table Runners for Every Occasion

Mech Watne, PerfectBorders.com

THU (#1684A) 10:30 AM
FRI (#1684B) 12:30 PM
SAT (#1684C) 10:30 AM
SUN (#1684D) 12:30 PM
ROOM C, SHOWPLEX

Sophisticated to fun, elegant to whimsical, holiday or everyday, table runners set the mood. Fabric and quilting motifs work together to create that mood. Mech will be showing you table runner piecing designs that allow for the easy addition of quilting motifs, how to accent those designs with the addition of piping, and how to adjust the length of your table runners to fit any table. Make your table a work of art for any or every occasion.



1685 On the Edge

Amanda Whitlatch, Janome America

THU (1685A) 1:30 PM
SAT (#1685C) 1:30 PM
ROOM G, SHOWPLEX
FRI (#1685B) 3:30 PM
ROOM D, SHOWPLEX

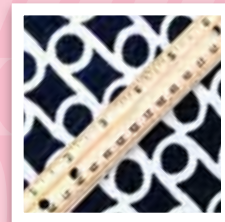
Experience the Artistic Edge Digital Cutter and the included SimpleCut® software to expand your creative opportunities. Learn the benefits of digitally cutting fabric for appliqué. See how easy it is to add custom embellishments to your projects using fabric, vinyl, crystals and so much more. Learn the process of cutting vinyl to quickly and easily create custom silk screens.

1686 The Wonderful World of Online Fabric Shopping

Susan Kennedy, The Smuggler's Daughter

THU (#1686A) 4:30 PM
FRI (#1686B) 3:30 PM
SAT (#1686C) 4:30 PM
ROOM L, VIP

Online fabric shopping is here to stay and makes fabric buying accessible to you no matter your location. But how can you buy fabric online when you can't touch it? You can make safe and sound buying decisions from the comfort of your own home with Susan's tips and tricks. Learn how to buy the best fabric for your needs, and arm you with the best tools for making sure you get what you are paying for—even if you can't reach through the computer screen and touch it.



Two Needles

Presented in lecture-demonstration format, these classes will demonstrate a complete project or technique from start to finish, along with resources to help you apply what you've learned at home.

90 MINUTES

\$20 TICKETS*

*Pre-registration is required for all Two Needle Sessions.

Two Needle Sessions

	Showplex (Room F) THURSDAY	Showplex (Room F) FRIDAY	Showplex (Room F) SATURDAY	Pavilion (Expo Runway) SUNDAY	Showplex (Room F) SUNDAY
8:30 TO 10:00	2602 The Fundamentals of Sewing Well <i>Ryliss Bod</i>	2611 Bra Fitting: Just because It Fits, Doesn't Mean It Fits! <i>Monica O'Rourke Bravo</i>	2608 Sewing Fashion Knits <i>Linda Lee</i>	2605 Throwing Snowballs! <i>Mary Fons</i>	8:00 TO 9:30 2614 Hands-On Crochet Basics <i>Joy Macdonnell</i>
10:30 TO 12:00	2603 Quilts from El's Attic <i>Eleanor Burns</i>	2601 Sewing Today's Knits: Sewing Machine vs. Serger <i>Helen Bartley</i>	2612 The Palmer/Pletsch Tissue Fitting Method <i>Pati Palmer & Melissa Watson</i>	No Class	10:00 TO 11:30 2615 Sheila's Knitting Tips and Techniques <i>Sheila Joynes</i>
12:30 TO 2:00	2606 Stylish and Comfortable Pants that FIT <i>Judy Kessinger</i>	2604 Ten Must Have Feet <i>Pam Damour</i>	2609 Fast, Easy Projects in Under an Hour! <i>Linda McGehee</i>	No Class	12:00 TO 1:30 2616 Pendleton Salvage Crochet Rug <i>Stacy Brisbee</i>
2:30 TO 4:00	2613 Machine Embroidery Bootcamp <i>Lisa Shaw</i>	2607 Ultimate Handbag Construction <i>Cheryl Kuczek</i>	2610 Machine Quilting in Sections <i>Marti Michell</i>	No Class	2:00 TO 3:30 2617 Cast On, Bind Off: Choosing the Perfect Beginning & End to Your Knitting Projects! <i>Winn Archambeau-Munoz & Roberta Lowes</i>

2601 Sewing Today's Knits: Sewing Machine vs. Serger

Helen Bartley, Seam Divas Sewing Lounge & Palmer/Pletsch

**FRI (#2601B) 10:30 AM - 12:00 PM
ROOM F, SHOWPLEX**

Find out how to choose the perfect knit and techniques to use your regular sewing machine to create knit garments. Already have a serger? You won't be left out! See samples of the same garment sewn with and without a serger, and get tips for maximizing special serger features. Learn about needles, stabilizing necklines and shoulders, choosing perfect seams, pressing, and using your sewing machine with a double needle for a professional-looking hem.



2602 The Fundamentals of Sewing Well

Ryliss Bod, Ryliss Sewing & Design School/ Billie's Designer Fabrics

**THU (#2602A) 8:30 - 10:00 AM
ROOM F, SHOWPLEX**

Learn and apply the basic fundamentals of sewing construction that will enable you to sew faster and get better finished results. Ryliss will share her techniques to eliminate puckers in your sleeve heads and down the front of a princess seam; prevent waves at the deep part of a V opening or around the neckline when you put in a collar or just a facing. See tips for successful use of fusible interfacing that will eliminate bubbles and stiffness. Learn the proper placement of buttons and buttonholes, and so much more.



2603 Quilts from El's Attic

Eleanor Burns, *Quilt in a Day*

THU (#2603A) 10:30 AM - 12:00 PM
ROOM F, SHOWPLEX

Join Eleanor as she shares some of her favorite antique quilts. She brings them into the modern age with clever and accurate techniques so you will know how to make your own heirlooms.



2604 Ten Must Have Feet

Pamela Damour, *The Decorating Diva*

FRI (#2604B) 12:30 - 2:00 PM
ROOM F, SHOWPLEX

Your sewing machine came with a set of standard feet and you know what functions they serve. Pam will share with you her favorite "must have" specialty feet such as the ruffler, walking foot, a narrow zipper foot, a double piping foot, a mini piping foot and more. Pam will demonstrate the special feet and tricks for using them for different purposes. See project samples using these feet, and receive a CD that recapping the common—and uncommon—uses of these special feet.



2605 Throwing Snowballs

Mary Fons, *Mary Fons*

SUN (#2605D) 8:30 - 10:00 AM
EXPO RUNWAY, PAVILION (2ND FLOOR)

In this fun and info-packed lecture with live demos, Mary takes you through the fundamental patchwork unit called the Snowball. This versatile, easy-to-make unit uses the "flippy corner" method and can create all kinds of sizes depending on your desired "flippy corner" size. Come on down and be inspired to throw snowballs using Mary's popular fabric line, "Small Wonders."

2606 Stylish and Comfortable Pants that FIT

Judy Kessinger, *FitNice, LLC*

THU (#2606A) 12:30 - 2:00 PM
ROOM F, SHOWPLEX

Take the smiles out of your pants—they belong on your beautiful face! Learn how to measure yourself and create a pattern that only fits you. Judy will show you how to eliminate fitting issues, make tweaks so the finished garment is comfortable, and then how to transfer all that back to your master pattern. Learn how to create six different styles using that first pattern! Your pants will now look perfect and feel fantastic!



2607 Ultimate Handbag Construction

Cheryl Kuczek, *Paradiso Designs/Quiltworks Northwest*

FRI (#2607B) 2:30 - 4:00 PM
ROOM F, SHOWPLEX

Handbag construction can be challenging to achieve the awesome results we all crave. Cheryl will demonstrate her tips and techniques while constructing a classic handbag in front of you. See her process of layering the bag pieces that create an external handbag and lining wall. She will share her pinning tips; the ingredients to make a strong pocket; the sewing sequence needed to form the walls of a bag; how to create a strong bag bottom with her 'muslin sandwich'; her system of adding the bottom, and grading tricks before turning the bag right side out.



2608 Sewing Fashion Knits

Linda Lee, *The Sewing Workshop*

SAT (#2608C) 8:30 - 10:00 AM
ROOM F, SHOWPLEX

Sewing today's knits can be mysterious and daunting. Many are tissue weight and wispy, others are mesh and lace-like. Almost all are curly and unpredictable. Learn to tackle this category of knits—the ones that we want to wear and show up in ready-to-wear. Basic stitching plus replicating fashion details for interesting hems and necklines.



2609 Fast, Easy Projects in Under an Hour!

Linda McGehee, *Ghee's*

SAT (#2609C) 12:30 - 2:00 PM
ROOM F, SHOWPLEX

See Linda's fast and easy DIY projects incorporating sewing, piecing, serging and embroidery based on a simple idea, the circle. Using the circle you can create all sorts of projects from hats, to bags, scarves, trims, flowers, and the Cameo Shuffle. Many projects use fat quarters or leftover fabrics from other projects. It will look like you've been, "Running Around in Circles."

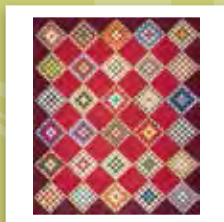


2610 Machine Quilting in Sections

Marti Michell, *Michell Marketing*

SAT (#2610C) 2:30 - 4:00 PM
ROOM F, SHOWPLEX

If you have been challenged trying to squeeze a queen-size quilt through the small opening on your sewing machine or you are tired of paying big bucks to send quilt tops out to be quilted, let Marti show you how to do it yourself. Marti will share tips, techniques, and secrets for quilting big quilts in manageable sections, and then show how to join those sections to complete the quilt. Learn the shared methods and the differences between Quilt-As-You-Go and Machine Quilting in Sections. Get a glimpse of how to add a new border to enlarge your favorite quilt and a time-saving binding tip.

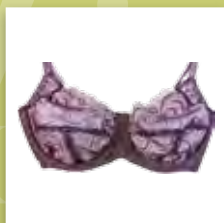


2611 Bra Fitting: Just Because It Fits, Doesn't Mean It Fits!

Monica O'Rourke Bravo, *BravoBella*

FRI (#2611B) 8:30 - 10:00 AM
ROOM F, SHOWPLEX

Let Monica help you demystify the sometimes perplexing world of fitting a bra, whether you plan to make your own or want to be a more educated ready-to-wear consumer. Learn about the art and science of bra fitting and get a glimpse as to why so many of them don't (fit, that is!). You will walk away armed with a foundational knowledge that you can apply to both your shopping and sewing experience.



2612 The Palmer/Pletsch Tissue-Fitting Method—See The Process Live!

Pati Palmer & Melissa Watson, Palmer/
Pletsch Publishing

SAT (#2612C) 10:30 AM - 12:00 PM
ROOM F, SHOWPLEX

Pati has been perfecting tissue-fitting since the 1970's. See Melissa fit her more mature mother (LIVE!) in a sheath dress and a pant (McCall's Patterns.) Pati and Melissa will show how to measure for size and will measure a few women in the audience. They will emphasize the order of tissue-fitting to ensure success. They will also talk about their latest designs for McCall's and give fit and sewing suggestions for them.



2613 Machine Embroidery Bootcamp

Lisa Shaw, Bubbles Menagerie

THU (#2613A) 2:30 - 4:00 PM
ROOM F, SHOWPLEX

A 90-minute blood pumping information flowing presentation on everything you need to know about machine embroidery. Is your machine still in the box? Why? Does your embroidery machine intimidate you? Oh no, we don't want to hear that! It's just a machine and YOU are the creative one that can make magic happen with thread and fabric. We're going to cover a little bit of everything - from needles to stabilizer to "the computer stuff". Come prepared for this jam packed session on all-things machine embroidery.



New for 2016! We are excited to announce a new selection of hands-on knitting and crochet sessions for beginners and experienced beginners on Sunday. These classes are limited to 50 participants, so sign up early to reserve your spot. Also, since these are hands-on sessions, be sure to check the supply list below each class description.

2614 Crochet-A-Thon: Hands-On Crochet Basics*

Joy MacDonnell, Simplicity Patterns

SUN (#2614D) 8:00 - 9:30 AM
ROOM F, SHOWPLEX

Learn how to hold your crochet hook and yarn comfortably, how select the right hook size for the yarn being used and the names of the basic stitches! Crochet along with Deborah and Joy learning to create the basic stitches to perfection. This class is great for beginners and a perfect refresher if you haven't crocheted for a while. *Limited to 50.

Student supplies. Crochet hook (any size) and several balls of appropriate weight yarn.



2615 Sheila's Knitting Tips and Techniques*

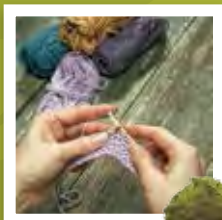
Sheila Joynes, Debbie Macomber's
A Good Yarn Shop

SUN (#2615D) 10:00 - 11:30 AM
ROOM F, SHOWPLEX

Want to learn some tricks that can take years for most knitters to figure out? Sheila has been knitting for decades and wants to share her knowledge. She will cover the most useful cast on techniques, yarn joins, yarn standards, gauge, correcting mistakes, increases, decreases, backward knitting, basic seaming and some special technique tips to save you hours of frustration. This is a fantastic class for beginners or advanced beginners. *Limited to 50.

Homework prior to class. Using a size 7 or 8, 16" circular and worsted weight yarn: Start: Cast on 24 stitches. Row 1: Knit. Row 2: Knit two stitches, purl 20 stitches, knit two stitches. Repeat rows 1 & 2 until piece measures 4". Leave on needles.

Student supplies. Homework (above), size 8 US needle, worsted weight yarn.



2616 Pendleton Selvage Crochet Rug*

Stacy Brisbee, Pendleton Woolen Mills

SUN (#2616D) 12:00 - 1:30 PM
ROOM F, SHOWPLEX

Reduce, reuse, and recycle with this fun, easy crochet rug. Turn wool selvages into a cozy rug with a big crochet hook and a supply of our Pendleton fuzzy wool selvages. Make a rug in the time it takes to watch a movie. No experience necessary. *Limited to 50.

\$20.00 kit fee. Includes five pounds of wool selvage from our mill, Q size crochet hook and instructions.

Student supplies. Scissors



2617 Cast On, Bind Off: Choosing the Perfect Beginning & End to Your Knitting Projects!

Winn Archambeau-Munoz & Roberta Lowes,
Fibers Etc.

SUN (#2617D) 2:00 - 3:30 PM
ROOM F, SHOWPLEX

There are so many more types of cast-ons and bind offs than the ones we first learned to knit. Come and explore different kinds of cast-ons and bind-offs, and add new techniques to your knitting repertoire. Attendees will learn four cast-ons—the knit, provisional, the cable, and the Möbius—making swatches in the process and putting them onto stitch holders. We will bind off each swatch with different bind-offs—the Three Needle, the Picot, the Russian knit and purl, and Elizabeth Zimmerman's Stretchy Sewn bind-off. Level: knitters must be able to knit and purl and do a basic cast-on and bind-off. *Limited to 50.

Student supplies. Light-colored smooth worsted weight yarn, contrasting waste yarn, Size US 7 or 8 needle, two 40" flexible circular needles or double-pointed needles same size, crochet hook size H-1, 2 to 4 stitch holders, tapestry needle (preferably curved), stitch markers, and basic knitting supplies.



Three Needle

Learn a sewing or embroidering technique in one of these exciting, hands-on classes. Sewing machines are provided by our sponsors.

Basic sewing supplies: Fabric & paper scissors, pins, seam ripper, seam gauge, ruler, measuring tape, sewing needles, rotary cutter & mat, chalk, pencil, mini iron & pad (optional)

2½ HOURS

\$30 TICKETS*

*Pre-registration is required for all Three Needle Sessions.

Three Needle Sessions (MACHINE)

THURSDAY

	Fairview BABY LOCK	Expo Hall BERNINA	Expo Hall BROTHER	Expo Hall PFAFF	Expo Hall VIKING	Showplex JANOME
8:00 TO 10:30	3633 All in One Placemat <i>Candice Jewett</i>	3605 The Innies & Outies of Machine Appliqué <i>Sylvain Bergeron</i>	3626 Beginning Couching for Color & Texture <i>Nancy Goldsworthy</i>	3602 Favorite Finishes for Necklines & Armholes on Knits <i>Helen Bartley</i>	3613 Extreme Embellishment <i>Karen Charles</i>	3608 Pendleton Table Runner <i>Stacy Brisbee</i>
11:00 TO 1:30	3643 Make a Flippy Gored Skirt <i>Marsha McClintock</i>	3604 Artsy Little Book of Tricks! <i>Susan Beck</i>	3616 Pin Tucks, Pin Tucks, and More Pin Tucks! <i>Kandi Christian</i>	3656 Cuddle Plush Monogram Pillow <i>Cindy Surina</i>	3641 Bobbin Work Revealed <i>Cindy Losekamp</i>	3624 Doodlin' Stitches <i>Nancy Fielder</i>
2:00 TO 4:30	3662 Divine Machine Cover <i>Susan Zellers & Debi Kuennan-Baker</i>	3639 Button It Up! <i>Debbi Lashbrook</i>	3623 Vintage Free Standing Lace <i>John Deer</i>	3629 Name Badge Purse <i>Darlene Guillory</i>	3659 Old Friends Made New Again <i>Katrina Walker</i>	3650 Curve Mastery Mini Quilt <i>Latifah Saafir</i>

FRIDAY

	Fairview BABY LOCK	Expo Hall BERNINA	Expo Hall BROTHER	Expo Hall PFAFF	Expo Hall VIKING	Showplex JANOME
8:00 TO 10:30	3663 Block-by-Block Tote <i>Susan Zellers & Debi Kuennan-Baker</i>	3604 Artsy Little Book of Tricks <i>Susan Beck</i>	3625 Waterfall Scarf <i>Diane Gloystein</i>	3636 Embroidering & Painting on Wood <i>Lana Jones</i>	3601 "Coloring Outside the Lines" Embroidered Towel <i>Darrelle Anderson</i>	3661 Scarlett O'Hara's Summertime Party Dress for Your 18" Doll <i>Nadeen Ward</i>
11:00 TO 1:30	3634 Martha Pullen Serge & Flip Baby Blanket <i>Candice Jewett</i>	3640 Drop the Dogs! <i>Debbi Lashbrook</i>	3627 Stack & Slash Crazy Quilt Block <i>Nancy Goldsworthy</i>	3630 Freeform Landscape Quilt <i>Lisa Halter</i>	3614 Fabulous Felting <i>Karen Charles</i>	3651 Paper Pieced Envelope Pillow <i>Latifah Saafir</i>
2:00 TO 4:30	3645 Serger Textured, Tucked & Quilted Electronic Tablet Cover <i>Julie Muschamp</i>	3606 Best Foot Forward: Step Up Your Options <i>Sylvain Bergeron</i>	3610 Embroidering in Circles <i>Bobbi Bullard</i>	3644 So Soft Suede Slippers <i>Sheila McKay</i>	3646 Make A Modern Dresden Plate Block <i>Michelle Muska</i>	3642 A Simple Point Table Runner or Wall Hanging <i>Lisa Maki</i>

SATURDAY

	Fairview BABY LOCK	Expo Hall BERNINA	Expo Hall BROTHER	Expo Hall PFAFF	Expo Hall VIKING	Showplex JANOME
8:00 TO 10:30	3664 Elegant Clutch Purse <i>Susan Zellers & Debi Kuennan-Baker</i>	3640 Drop the Dogs! <i>Debbi Lashbrook</i>	3623 Vintage Free Standing Lace <i>John Deer</i>	3656 Cuddle Plush Monogram Pillow <i>Cindy Surina</i>	3653 Fabric Manipulated Scrunched Scarf <i>Nancy Sapin</i>	3650 Curve Mastery Mini Quilt <i>Latifah Saafir</i>
11:00 TO 1:30	3635 Heirloom Technique Starter Pillow <i>Candice Jewett</i>	3605 The Innies & Outies of Machine Appliqué <i>Sylvain Bergeron</i>	3628 Pickle Dish Table Mat <i>Nancy Goldsworthy</i>	3658 Thread Lace Scarf <i>Michelle Umlauf</i>	3655 Traditional Paper Piecing <i>Connie Spurlock</i>	3602 Favorite Finishes for Necklines & Armholes on Knits <i>Helen Bartley</i>
2:00 TO 4:30	3664 Elegant Clutch Purse <i>Susan Zellers & Debi Kuennan-Baker</i>	3637 Fabric Collage Techniques <i>Marla Kazell</i>	3611 Embroidering on Your Tee <i>Bobbi Bullard</i>	3660 Simply Sewing with Silk <i>Katrina Walker</i>	3615 Thread Artistry <i>Karen Charles</i>	3624 Doodlin' Stitches <i>Nancy Fielder</i>

SUNDAY

	Fairview BABY LOCK	Expo Hall BERNINA	Expo Hall BROTHER	Expo Hall PFAFF	Expo Hall VIKING	Showplex JANOME
8:00 TO 10:30	3665 Serger Clutch Wallet <i>Susan Zellers & Debi Kuennan-Baker</i>	3639 Button It Up! <i>Debbi Lashbrook</i>	3617 Double Madeira & Pin Tucks Master Class <i>Kandi Christian</i>	3644 So Soft Suede Slippers <i>Sheila McKay</i>	3641 Bobbin Work Revealed <i>Cindy Losekamp</i>	3652 Appliquéd Trivet <i>Nancy Sapin</i>
11:00 TO 1:30	3633 All-in-One Placemat <i>Candice Jewett</i>	3606 Best Foot Forward: Step Up Your Options <i>Sylvain Bergeron</i>	3623 Vintage Free Standing Lace Sachet <i>John Deer</i>	3638 Around & Around We Go <i>Marsha Kirsch</i>	3601 Coloring "Outside the Lines" Embroidered Towel <i>Darrelle Anderson</i>	3624 Doodlin' Stitches <i>Nancy Fielder</i>

3601 "Coloring Outside the Lines" Embroidered Towel

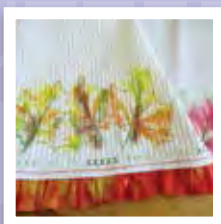
Darrelle Anderson, SVP Worldwide

FRI (#3601B) 8:00-10:30 AM
SUN (#3601D) 11:00 AM-1:30 PM
VIKING, EXPO HALL

Explore your wild side of color while creating a one of a kind tea-towel. Machine embroider a design and then be in awe as you learn the basics of "Coloring Outside the Lines" with color-wash, and how to use this technique to unleash your color sense. Learn to use a rolled hem foot and ruffler foot to finish off your unique tea-towel. Think "Outside the Lines" and learn to look at machine embroidery in a whole new way.

\$10.00 kit fee. Includes towel, fabric for ruffle, and stabilizer. Students will also have use of thread, specialty machine feet, and coloring products in the classroom.

Student supplies. Basic sewing supplies^a



3602 Favorite Finishes for Necklines and Armholes on Knits

Helen Bartley, Seam Divas Sewing Lounge & Palmer/Pletsch

THU (#3602A) 8:00-10:30 AM
PFAFF, EXPO HALL

SAT (#3602C) 11:00 AM-1:30 PM
JANOME, SHOWPLEX

Learn the secrets of neckline and shoulder stabilizing and how to do three favorite bindings. You'll learn the twisted cowl for the neckline, a self-fabric band on one armhole, and a sewn-on facing for the other. Variations for all three will also be shown.

\$15.00 kit fee. Includes pre-cut fabric to create three different binding samples on one mini t-shirt: Self-fabric band, sewn-on facing, twisted cowl, fusible stay tape for the neckline, and woven non-fusible stay tape for shoulder seams; thread

Student supplies. Basic sewing supplies^a



Three Needle Sessions (NO MACHINE)



Thursday FAIRVIEW 1		Friday FAIRVIEW 1	
PAVILION, THEATER		PAVILION, THEATER	
8:00 TO 10:30	3654 Counted Cross Stitch Basics <i>Barbara Smith</i>	3603 Exploration of Nuno Felting <i>Kali Basi</i>	3618 Drafting & Styling Pants & Skirts <i>Connie Crawford</i>
11:00 TO 1:30	3631 Cartonnage: The Art of French Box Making <i>Mary Jo Hiney</i>	3607 "Candle Wicked Good" Traditional Candlewicking in Modern Projects <i>Pam Bocko</i>	3654 Counted Cross Stitch Basics <i>Barbara Smith</i>
2:00 TO 4:30	3657 Over the Rainbow with Calico Cats <i>Joyce Teng</i>	3609 Splash! No Tracing Raw Edge Appliqué <i>Dee Brown</i>	3622 Zentangle on Fabric <i>Pam Damour</i>
			3612 Basic Wool Appliqué Workshop <i>Debbie Busby</i>
			3619 Cross Stitch with Waste Canvas <i>Michele Crawford</i>



Saturday FAIRVIEW 1		Sunday FAIRVIEW 1	
PAVILION, THEATER		PAVILION, THEATER	
8:00 TO 10:30	3618 Drafting & Styling Pants & Skirts <i>Connie Crawford</i>	3632 Silk Ribbon Stitch Library <i>Mary Jo Hiney</i>	3654 Counted Cross Stitch Basics <i>Barbara Smith</i>
11:00 TO 1:30	3654 Counted Cross Stitch Basics <i>Barbara Smith</i>	3649 Designer Beaded Buttons <i>Cindy Rowell</i>	3647 Woven Earrings on a Mini Loom <i>Carol Porter</i>
2:00 TO 4:00	3648 Chinese Dragon Boat Sachets <i>Marilyn Romatka</i>	3620 What Is Chicken Scratch? <i>Michele Crawford</i>	No Class
			No Class

3603 Exploration of Nuno Felting

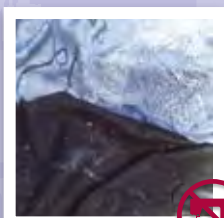
Kali Basi, Kali Basi Designs

THU (#3603A) 8:00 - 10:30 AM
THEATER, PAVILION (2ND FLOOR)

This workshop will provide an introduction to advanced nuno felting techniques. By using fine weave fabrics and manipulating fibers such as silk, soya, flax with fine wool, learn to create samples of lightweight textiles with dramatic and diverse characteristics. Learn multiple texture techniques such as layering, resist, and pleating and also the different effects of using a variety of fibers and fabrics. Previous nuno felting experience is beneficial, but not necessary.

\$5/\$10 kit fee. Includes (\$5 kit) decorative fiber and fancy yarn. (\$10 kit) decorative fiber, fancy yarn, wool roving and ½ yard of silk chiffon.

Student supplies. Towel, ½ yard of any sheer chiffon-like material, any decorative yarn.



3604 Artsy Little Book of Tricks

Susan Beck, Bernina of America

THU (#3604A) 11:00 AM - 1:30 PM
FRI (#3604B) 8:00 - 10:30 AM
BERNINA, EXPO HALL

Put a little zing into your arts and crafts projects. Make them fun and fast using sewing machine techniques that add texture, color, and unique qualities to your creations. Try several quick and easy stitching methods, including creating fabric yardage using scraps of any and all sizes, making custom cord for trim and ties, easy edgings, and sew much more. Learn these techniques while making your own Artsy Little Book of Tricks.

\$20.00 kit fee. Includes assorted pieces of linen, silk, and other fabrics; yarn, cording, buttons, batting, stabilizer, needle, threads and other materials needed for techniques.

Student supplies. Basic sewing supplies². Optional: rotary cutter, clear ruler, cutting mat up to 12" x 18".



3605 The Innies and Outies of Machine Appliqué

Sylvain Bergeron, Bernina of America

THU (#3605A) 8:00-10:30 AM
SAT (#3605C) 11:00 AM-1:30 PM
BERNINA, EXPO HALL

Machine appliqué can be fun and easy with a few helpful hints up your sleeve! Experience a variety of machine appliqué techniques, such as Raw-edge, Free-motion, Reverse, and Traditional, while creating a fundamental reference guide sure to be of value for future appliqué opportunities.

\$20.00 kit fee. Includes assorted fabric, precut fabric shapes, Kraf-Tex™, stabilizers, cording, needles, threads, mounting pages, and page protectors.

Student supplies. Basic sewing supplies², fabric marker, glue stick.

3606 Best Foot Forward: Step Up Your Options

Sylvain Bergeron, Bernina of America

FRI (#3606B) 2:00-4:30 PM
SUN (#3606D) 11:00 AM-1:30 PM
BERNINA, EXPO HALL

Every sewing machine comes with a set of standard presser feet for basic techniques. We all try to push those feet to their maximum capabilities, sometimes with poor results. Learn how easy it is to use a new foot, designed for a basic function opening doors to your adventurous side. The standard, zipper, blind hem, and decorative stitch feet will be highlighted while you create a sampler book of techniques.

\$20.00 kit fee. Includes assorted fabric, precut fabric shapes, stabilizers, zipper, needles, threads, and Kraf Tex™.

Student supplies. Basic sewing supplies², glue stick, rotary cutter & small cutting mat, 7"×14" ruler, pen or pencil and notepad.

3607 "Candle Wicked Good!": Traditional Candlewicking in Today's Modern Projects

Pam Bocko, Pieceful Designs

THU (#3607A) 11:00 AM-1:30 PM
THEATER, PAVILION 2ND FLOOR

The art of Candlewick Embroidery has roots that go back to the Wild West and wagon train days. But why not blend this form of stitchery, centered on the Colonial Knot, with your modern day projects? You will learn the history of Candlewicking, the materials used, and compare traditional material vs. modern day supplies. Learn how to mark the design, the main stitches used in Candlewicking (Colonial Knot, Stem, and Satin), and finishing techniques. You will love this nearly forgotten technique and have fun using it.

\$20.00 kit fee. Includes ¾ yard heavy weight muslin, embroidery hoop, three skeins ecru embroidery floss, Chenille needles size 24, Water soluble marking pen, original pattern with complete instructions, and four original designs by Pieceful Designs.

Student supplies. Embroidery scissors.



3608 Pendleton Table Runner

Stacy Brisbee, Pendleton Woolen Mills

THU (#3608A) 8:00-10:30 AM
JANOME, SHOWPLEX

A quick and satisfying project to combine a blanket weight jacquard fabric and wool felt binding. You will learn how to apply the felt binding the same way it is applied to Pendleton™ blankets. In a short time you will have created a project to last a life time.

\$30.00 kit fee. Includes ½ yard of native wool jacquard fabric, three yards of matching binding.

Student supplies. Basic sewing supplies² and lots of pins.

3609 Splash! No Tracing Raw-Edge Appliqué

Dee Brown, The Quilted Trillium

THU (#3609A) 2:00-4:30 PM
THEATER, PAVILION 2ND FLOOR

Learn this fun and creative technique to take your appliqué to the next level. Learn to correctly use Steam-a-Seam™ fusible interfacing, how to lay the design down to prevent puckers and bubbles, and how to create your pattern pieces without tracing them! You will apply techniques to make a small wall hanging in class. Use this technique to create home décor, personalized gifts, and more.

\$22.00 kit fee. Includes original pattern, fabric, lite Steam-a-Seam™.

Student supplies. Small sharp scissors, Teflon appliqué pressing sheet. Optional: travel iron (<200 watts), tweezers.



3610 Embroidering in Circles

Bobbi Bullard, Bullard Designs

FRI (#3610B) 2:00-4:30 PM
BROTHER, EXPO HALL

Learn how to arrange any embroidery designs into a perfectly spaced circle, then apply this technique as you create a silk pillow cover. By replacing geometry with templates and a compass, you will conquer the challenge of circular embroidery. Take home knowledge and experience to use on your own embroidery machine.

\$30.00 kit fee. Includes cream or claret silk dupioni for 14"×14" pillow cover, embroidery design paper templates, stabilizer.

Student supplies. Basic sewing supplies². Eight or nine spools of embroidery thread (the design uses two colors, but bring options so you can choose what works best with your fabric.)



3611 Embroidering on Your Tee

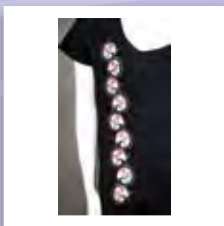
Bobbi Bullard, Bullard Designs

SAT (#3611C) 2:00-4:30 PM
BROTHER, EXPO HALL

Using a purchased t-shirt, you will learn techniques for perfect machine embroidery on knit fabrics and how to embroider a flawless continuous line. While your machine is stitching away, Bobbi will discuss the secrets of design placement for spectacular results. Bring your own t-shirt and transform it into a spectacular, wearable work of art.

\$30.00 kit fee. Includes CD containing designs, white knit fabric for the reverse appliqué, adhesive wash-away stabilizer.

Student supplies. T-shirt (choose one with no seams in the front), small sharp scissors, green thread, red thread, yellow thread, thread to match your tee shirt.



3612 Basic Wool Appliqué Workshop

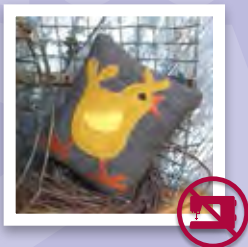
Debbie Busby, Wooden Spool Designs

FRI (#3612B) 11:00 AM - 1:30 PM
THEATER, PAVILION 2ND FLOOR

Come learn how to appliqué using wool. Learn how to prepare your wool for use in a pincushion. Debbie will show you the easiest way to cut out the wool shapes, and to decide what stitches will work the best for your wool appliqué. The different types of wool and how to prepare your wool for appliqué will be discussed.

\$25.00 kit fee. Includes pattern, wool, stuffing, thread, needle.

Student supplies. Small sharp scissors, appliqué pins (I recommend Clover White Head Appliqué Pins).



3613 Extreme Embellishment

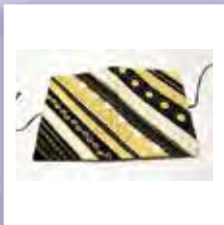
Karen Charles, SVP Worldwide

THU (#3613A) 8:00-10:30 AM
VIKING, EXPO HALL

Are you ready to push your creativity to the limit? Discover fun ways to use your machine stitches and accessory feet to texturize and embellish a base fabric. Learn tips and tricks for fabric manipulation—even tackle beading by machine! All this and sew much more! Turn your designer fabric into a treasure to keep forever.

\$10.00 kit fee. Includes fabrics, stabilizers and notions, including sequins, beads and Swarovski crystals for embellishment. Threads will be provided for use in the classroom.

Student supplies. Small scissors, pins, erasable or wash away marking pen, seam ripper.



3614 Fabulous Felting

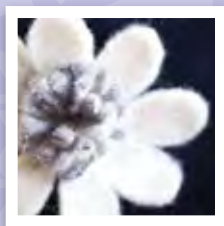
Karen Charles, SVP Worldwide

FRI (#3614B) 11:00 AM - 1:30 PM
VIKING, EXPO HALL

Make a statement with this beautiful felted flower brooch. Experience how easy felting can be when it is done in the hoop. Watch as the embroidery machine transforms roving into felted elements. You won't believe your eyes! Combine the elements to form the perfect posy and a touch of beading will finish it off just right. Leave with a finished project and loads of inspiration!

\$8.00 kit fee. Includes wool roving, stabilizer, beads, and jewelry finding. Felting accessories and needles will be provided for use in class.

Student supplies. Small scissors for trimming.



3615 Thread Artistry

Karen Charles, SVP Worldwide

SAT (#3615C) 2:00-4:30 PM
VIKING, EXPO HALL

This class is a fun way to build your free motion skills while creating a unique three dimensional project. No experience necessary; beginners are welcome! Learn the basics of thread painting using both straight stitches and decorative stitches. Apply heat to shape your project into its final form. Take home your finished art piece and a new skill that can be applied to future projects.

\$5.00 kit fee. Includes fabric and craft foam foundation. Threads will be provided for use in the classroom.

Student supplies. Appliqué or other small scissors suitable for detail work.



3616 Pin Tucks, Pin Tucks, Pin Tucks... and Yes, More Pin Tucks!

Kandi Christian, Sew Timeless

THU (#3616A) 11:00 AM - 1:30 PM
BROTHER, EXPO HALL

Twin needles aren't just for sewing straight lines and they're not just for heirloom sewing. You can do all kinds of things with a twin needle like pin tucks. Use serpentine arcs, concentric circles and more to create fantastic effects on fabric. Use what you learn to make a pin tuck sampler pillow.

\$20.00 kit fee. Includes 100% cotton batiste, shell buttons, and instructions.

Student supplies. Size 2,0/80 twin needle, two spools of 60 weight white cotton thread, fabric marker, ruler, small terry towel (for pressing) and basic sewing supplies.



3617 Double Madeira and Pin Tucks Master Class

Kandi Christian, *Sew Timeless*

SUN (#3617D) 8:00-10:30 AM
BROTHER, EXPO HALL

Madeira hems look hard but they're not if you're a Madeira Jedi Master. Learn the simple way to make appealing double-scalloped Madeira hems. While completing this elegant towel, you'll also master the skill of curved pin tucks—the effect will be stunning! No one but you will know how easy it was.

\$20.00 kit fee. Includes 100% cotton batiste, pin stitch needle, stabilizer, pin stitch needle, and instruction booklet.

Student supplies. Size 2,0/80 twin needle, two spools of 60 weight white cotton thread, fabric marker, small scissors, seam gauge or ruler and basic sewing supplies.



3618 Drafting & Styling Pants & Skirts

Connie Crawford, *Fashion Patterns by Coni*

FRI (#3618B) 8:00-10:30 AM
SAT (#3618C) 8:00-10:30 AM
FAIRVIEW, 1ST FLOOR

Learn to custom draft basic pant and skirt blocks. These blocks give you the starting points to make your personal skirt or pant design, or to copy your favorite designer. Connie will demonstrate how to fit different waistline shapes and other fitting issues. The class will also demonstrate how to design yokes, legging shapes for pants, fitted and flared gores, kick pleats, style lines, and more.

\$5.00 kit fee. Includes copy of slide presentation and 1/3-scale patterns to make various designs.

Student supplies. Scissors for cutting paper, pencil, scotch tape



3619 Cross Stitch with Waste Canvas

Michele Crawford, *Flower Box Quilts*

FRI (#3619B) 2:00-4:30 PM
THEATER, PAVILION 2ND FLOOR

Waste canvas is a temporary water soluble grid which allows the stitcher to cross stitch a design on any fabric; and then remove the grid. Michele will teach you how to stitch an original cross stitch design on a tea towel using waste canvas.

\$10.00 kit fee. Includes one 4" square of 10 count waste canvas, one 4" square of 14 count waste canvas, two 6" x 6" squares of fabric, needle, embroidery floss and patterns.

Student supplies. Small sewing scissors, 1" x 6" ruler, small straight pins, pair of tweezers. Optional: needle threader, bifocals, small personal Ott light.



3620 What is Chicken Scratch?

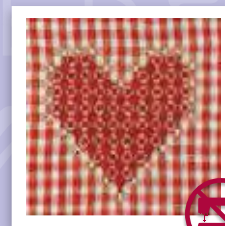
Michele Crawford, *Flower Box Quilts*

SAT (#3620C) 2:00-4:30 PM
THEATER, PAVILION 2ND FLOOR

Chicken scratch (also known as Gingham Embroidery, Snowflake Embroidery or Broderie Suisse) is an intricate yet easy embroidery technique. Learn to follow a chart, and sew different embroidery stitches on the "grid" of the 1/4" gingham fabric to create two different 8" squares that can be used as a pocket or a pillow if a fabric border is added. Be inspired by many other projects.

\$10.00 kit fee. Includes Two 8" squares of homespun gingham fabric, embroidery floss, needle, pattern.

Student supplies. Small sewing scissors. Optional: 4" round embroidery hoop, needle thread, bifocals, small personal Ott light.



3621 Floral Hexagon Quilt

Michele Crawford, *Flower Box Quilts*

SUN (#3621D) 11:00 AM-1:30 PM
THEATER, PAVILION 2ND FLOOR

Hexagons are all the rage! Learn several English paper piecing techniques to hand piece a hexagon. The hexagons will be hand appliquéd to a base fabric that can be made into a small quilt or a pillow top ready for spring decorating. See various ways to create projects with hexagons.

\$12.00 kit fee. Includes 21-2" fabric squares, 21-1 1/2" paper hexagons; 12" x 14" white fabric rectangle for quilt (or pillow center), green fabric and thread for leaves and stems, needle, and pattern.

Student supplies. 100% cotton thread (pale pink and white), small straight pins, small sharp sewing scissors, small scissors to cut paper, 1" x 6" ruler, water soluble fabric glue pen (Bohin or Fons and Porter.) Optional: Needle threader, bifocals or a small personal OTT light. Following the class, you will need batting, backing, pillow form or binding fabric to complete the project at home.

3622 Zentangle on Fabric

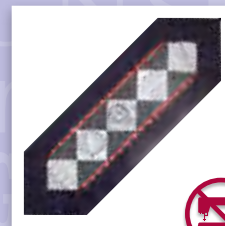
Pamela Damour, *The Decorating Diva*

FRI (#3622B) 2:00-4:30 PM
FAIRVIEW BLDG. 1ST FLOOR

Create your own print fabric using the principles of Zentangle. Zentangle is a popular step-by-step drawing process with roots in meditation and art therapy. Create several patterns in an easy-to-follow format right on the fabric. Your fabric squares can be then sewn into the project or your choice!

\$25.00 kit fee. Includes Zentangle mat, three pens, pencil, tortillion, handout, four fabric squares.

Student supplies. None.



3623 Vintage Free Standing Lace

John Deer, *John Deer's Adorable Ideas*

THU (#3623A) 2:00-4:30 PM
SAT (#3623C) 8:00-10:30 AM
SUN (#3623D) 11:00 AM-1:30 PM
BROTHER, EXPO HALL

John Deer's "Vintage Lace" designs are authentic freestanding Schiffler Lace originally created for the bridal industry. John will share how they were saved, re-mastered, and converted to run on your modern embroidery machines. You will learn how to achieve the best results and will be amazed as you stitch a piece of history! Complete a beautiful Free Standing Lace Sachet, embroidering not only the design but attaching the ribbon, organza, and creating an embroidered tassel all within one hooping! Not only will you receive the design and supplies to complete this Lace Sachet project, you will also receive the design files and hardware to complete a "Free Standing Vintage Lace Jewelry Set".

\$25.00 kit fee. Includes CD with design files for Sachet and Jewelry projects, one spool of rayon thread, stabilizer, ribbon, organza, lavender and jewelry hardware.

Student supplies. None.

3624 Doodlin' Stitches!

Nancy Fiedler, *Janome America*

THU (#3624A) 11:00 AM-1:30 PM
SAT (#3624C) 2:00-4:30 PM
SUN (#3624D) 11:00 AM-1:30 PM
JANOME, SHOWPLEX

If you love Zentangle, join this class and learn how simple it is to create with decorative stitches. You will go home with the confidence to create your own doodles with your sewing machine. Photo is a representation only; every sample will vary with each student's interpretation of doodlin'.

\$6.00 kit fee. Includes 22" x 22" white cotton treated with Terial Magic™, 10" square green fabric, organza, chiffon, black embroidery thread, black pre-wound bobbin, leaf pattern

Student supplies. Water soluble marker/chalk, thread snips or embroidery scissors, straight pins

3625 Waterfall Scarf

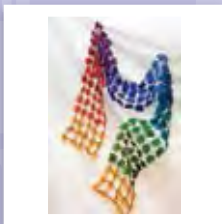
Diane Gloystein, *Sulky of America*

FRI (#3625B) 8:00-10:30 AM
BROTHER, EXPO HALL

Bias, silk dupioni squares appear to be magically suspended in air in this edgy, contemporary scarf. Students will prepare their silk by cutting squares on the bias. The silk is then applied to heavy water soluble stabilizer. Vertical and horizontal rows of stitching hold the squares in place on the stabilizer. When the stitching is completed, the stabilizer is removed and the magical, airy scarf is completed. Colors of scarf may vary from the picture.

\$30.00 kit fee. Includes silk dupioni bias strips, black Sulky rayon thread, black cording, Sticky Fabri Solvy, Solvy, 90/14 gold needle. Colors of scarf may differ from those photographed.

Student supplies. Small cutting board (12" will suffice), ruler, black Sharpie™ ultra fine point marker, six straight pins, 1" rotary cutter, thread snips.



3626 Beginning Couching For Color & Texture

Nancy Goldsworthy, *Wonderfil*

THU (#3626A) 8:00-10:30 AM
BROTHER, EXPO HALL

A little bling can dress up your next garment, quilt, bag or other project. Take a look at simple ways to add a pop of color or a bit of shimmer. We will work with ribbons, yarns, purchased trims, lace, and lots of threads. At the end of class you will have sewn samples to show off your new skills and to spark your creativity.

\$25.00 kit fee. Includes stabilized fabric for stitching, several spools of specialty threads, a bobbin with appropriate thread. Heavy threads, yarns, trims and other fibers to couch down. Bamboo skewer for controlling fabric and fibers.

Student supplies. Small scissors and seam ripper.

3627 Stack and Slash Crazy Quilt Block

Nancy Goldsworthy, *Wonderfil*

FRI (#3627B) 11:00 AM-1:30 PM
BROTHER, EXPO HALL

This lap size quilt top is perfect for beginning stitchers and a great quick quilt for the more seasoned quilter. Cutting takes less than 20 minutes! The fabrics needed to complete the quilt top and binding are included in the kit. (You will need to add your own batting and backing.) Join Nancy for a fun time slicing and dicing while we whip up our blocks for this fun quilt. Definitely a pattern you can't make just once!

\$30.00 kit fee. Includes all fabrics, pattern, thread.

Student supplies. Rotary cutter, mat (18" x 24" if possible), 18" or larger ruler, small scissors, seam ripper, pins.

3628 Pickle Dish Table Mat

Nancy Goldsworthy, *Wonderfil*

SAT (#3628C) 11:00 AM-1:30 PM
BROTHER, EXPO HALL

This pattern is a variation on the beloved Double Wedding Ring. Its sharp points are reminiscent of Grandma's cut glass dishes. This is a class for the intermediate quilter who is looking to fine tune their skills and tackle a more challenging project. We will be working with a pre-cut kit that has everything you need for the quilt top and backing.

\$25.00 kit fee. Includes fabric, batting, threads, pattern and instructions.

Student supplies. Small scissors, sewing awl, bamboo skewer or Purple Thang, pins, seam ripper.



3629 Name Badge Purse

Darlene Guillory, Pfaff

THU (#3629A) 2:00-4:30 PM
PFAFF, EXPO HALL

Use this handy purse to carry your ID, cash, and credit cards. One side has a clear pocket for your name badge, passport, or cell phone; the reverse side shows off pretty machine decorative stitches. Both sides have a bright zipper for easy access to the pockets, making it the perfect lightweight accessory for travel, shopping trips, attending workshops or the Expo!

\$10.00 kit fee. Includes pre-cut fabrics, stabilizer and notions. Threads will be provided for use in the classroom.

Student supplies. Basic sewing supplies^A, white fabric marker (chalk, pencil, etc.), small ruler (6-18" long), straight pins, point turner.



3630 Freeform Landscape Quilt

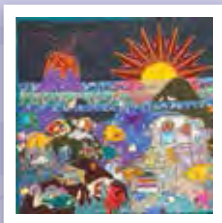
Lisa Halter, Pacific Fabrics

FRI (#3630B) 11:00 AM-1:30 PM
PFAFF, EXPO HALL

Create your own fabulous landscape quilt! With Lisa's expert help, you'll design and create a basic landscape while learning how to add perspective and focal interest along with embellishing and finishing techniques. As a bonus, Lisa will also focus on helping you learn how to use the Sun for highlighting your landscape!

\$15.00 kit fee. Includes fusible web, fabric, Perle cotton, embroidery floss, hand sewing needles, yarn to couch.

Student supplies. Spool of neutral colored thread, spool of dark thread, sharp paper scissors, thread snips, glass head pins, seam ripper, rotary cutter, small rotary cutting mat (18" x 24" or smaller) and ruler (6½" x 12½" or 3½" x 18½").



3631 Intro to Cartonnage: The Art of French Box Making

Mary Jo Hiney, Mary Jo Hiney Designs

THU (#3631A) 11:00 AM-1:30 PM
FAIRVIEW, 1ST FLOOR

The art of making decorative boxes from cardboard began around 1844, in Valréas, France. Learn Mary Jo's well-honed techniques for creating decorative boxes and incorporating ribbon techniques, using her artisan-crafted hand-dyed silk velvets and ribbons. Students will choose between a small oval or small heart shape. Assorted shades will be offered.

\$30.00 kit fee. Includes hand-dyed silk/ rayon velvet, silk dupioni, cardboard oval or heart box kit pieces, batting, assorted needles sizes, 2" square of nonwoven interfacing, assorted hand-dyed silk and velvet ribbons, instructions for box assembly, laminating, Gerbera Daisy, and finishing techniques.

Student supplies. 4-oz bottle Original Formula Aleene's Tacky Glue (NO SUBSTITUTIONS; available at all chain stores.), fabric, embroidery, and craft scissors, small ruler or tape measure, straight pins, needlenose pliers or needle grabber, paper and pen.



3632 Silk Ribbon Stitch Library

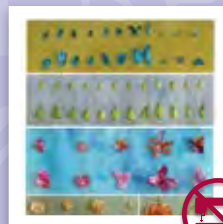
Mary Jo Hiney, Mary Jo Hiney Designs

SAT (#3632C) 8:00-10:30 AM
THEATER, PAVILION 2ND FLOOR

Create a stitch library reference tool using Mary Jo's artisan-crafted hand-dyed silk ribbon, along with fabric that lends itself well to ribbon embroidery. Learn correct ribbon manipulation and the nuances of this hand-embroidery art form. Uncover the value of hand-dyed ribbon.

\$22.00 kit fee. Includes natural white silk noil chamois, assorted Chenille and Milliner's needles, assorted hand-dyed silk ribbons, stitch diagrams and stitching template.

Student supplies. 5 to 6" embroidery hoop, small scissors, needlenose pliers or needle grabber, neutral thread, pencil and paper.



3633 All-in-One Placemat

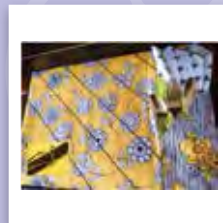
Candice Jewett, Serger Café

THU (#3633A) 8:00-10:30 AM
SUN (#3633D) 11:00 AM-1:30 PM
BABY LOCK, FAIRVIEW

Never again will you or a guest forget their silverware or napkin! This placemat features two pockets—one for a napkin and the other for utensils. It all rolls up in a neat little package and ties. Perfect for picnic baskets or your buffet table. Quilt with a serger deco chainstitch, learn a binding technique using fusible thread and make ties with a belt loop binder. It is a fun project that works equally well for summer or any holiday.

\$30.00 kit fee. Includes four coordinating fabrics (all precut, labeled and ready to serge), Warm and Natural batting, spools of: YLI Pearl Crown Rayon and fusible thread, nine page full color pattern/instructions.

Student supplies. Scissors, pencil and paper.



3634 Martha Pullen Serge and Flip Baby Blanket

Candice Jewett, Serger Café

FRI (#3634B) 11:00 AM-1:30 PM
BABY LOCK, FAIRVIEW

Make a quick, easy, and reversible Baby Blanket with your serger using a four-thread overlock and quilt-as-you-go technique. Serging the rows together and then "flipping" for the next row allows you to have the quilting done while you are sewing the strips together. One side has blocks while the other side has stripes. A decorative three-thread overlock edge finishes it off! What a great way to use your serger! It could also be made with summer with cottons.

\$25.00 kit fee. Includes Martha Pullen Licensed Pattern, ⅝ yard each of four different flannel fabrics 44/45 inches wide, four spools serger thread to blend with your flannel, two different colored spools of YLI Pearl Crown rayon or Sulky 12wt cotton.

Student supplies. Scissors, pencil and paper.



3635 Heirloom Technique Starter Pillow

Candice Jewett, *Serger Cafe*

SAT (#3635C) 11:00 AM - 1:30 PM
BABY LOCK, FAIRVIEW

If you have ever thought about trying heirloom sewing with your serger, this is the project for you. This heirloom technique starter pillow features several easy and fun techniques that you will use repeatedly. It can be a travel pillow, a ring bearer's pillow, a baby pillow or an accent pillow. Techniques will include serged pintucks, bridging, lace insertion, cording and more. We will be using a light blue linen blend fabric with heirloom laces.

\$30.00 kit fee. Includes Essex linen, Martha Pullen heirloom, laces, cording, rayon thread for colored pintucks, pattern, sample fabrics/laces for practice. Everything will be pre-cut and labeled.

Student supplies. Scissors, pencil and paper.



3636 Embroidering and Painting on Wood

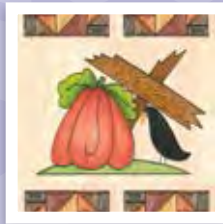
Lana Jones, *Quality Sewing*

FRI (#3636B) 8:00 - 10:30 AM
PFAFF, EXPO HALL

Experience the stunning art form of embroidering and painting on wood. Let Lana guide you through each step of this impressive style of embroidery. Step out of your "sewing box" and step into the world of embroidery art. You will be impressed and amazed at the sizes of wood you can use, how easy this is, and especially your own results! Come and gain some incredible machine embroidery knowledge!

\$20.00 kit fee. Includes wood for project, stabilizer, embroidery needle, embroidery thread, embroidery bobbin, use of inks for painting, CD with designs.

Student supplies. Small embroidery scissors, pencil and paper.



3637 Fabric Collage Techniques a la Koos

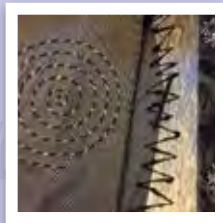
Marla Kazell, *Marla Kazell*

SAT (#3637C) 2:00 - 4:30 PM
BERNINA, EXPO HALL

Explore the fabric collage techniques from designer Koos van den Akker in his New York boutique garments and Vogue patterns. Learn to combine a variety of fabrics, fibers, colors, textures and prints. Make samples of collage techniques including fabric slicing, couching, and origami texture. Create bias tape, see how to use your iron to shape it and use it to set off your design. Get tips on shopping for fabrics and sewing a unique collage garment.

\$20.00 kit fee. Includes four fabric pieces appropriate for the collage techniques, pre-cut bias strips for bias tape, yarn, 1/2" bias tape maker.

Student supplies. Pins, black thread, shears, ruler w/ bias line, chalk marker or chalk pencil. Optional: travel iron.



3638 Around and Around We Go

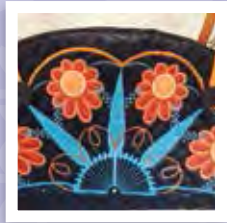
Marsha Kirsch, *SVP Worldwide*

SUN (#3638D) 11:00 AM - 1:30 PM
PFAFF, EXPO HALL

Experiment with the circular attachment and your built-in decorative stitches to make this clever carry case for all of your essentials. Stitching in the round is the perfect accent for the curved shape of the bag. Learn quick and easy zipper insertion; add boxed corners and your case is complete! You'll love the results!

\$10.00 kit fee. Includes fabrics, stabilizers, notions. Threads and circular attachments provided for use in the classroom.

Student supplies. Small scissors, pins, seam ripper, 12" ruler, erasable fabric marking pen.



3639 Button It Up!

Debbi Lashbrook, *Bernina of America*

THU (#3639A) 2:00 - 4:30 PM
SUN (#3639D) 8:00 - 10:30 AM
BERNINA, EXPO HALL

Buttonholes can be fun! See how technology has removed the fear factor. Let your imagination loose and your artistic soul come forth as you sample the various ways to button up any trepidations you may have had! Learn the basics of threads, buttonhole settings, and stabilizers to use while creating buttonholes. Add some fun by inserting decorative threads in buttonholes. Use fancy patterns to add pizzazz to your buttonhole projects. Come learn the practical as well as the fun side of buttonholes!

\$25.00 kit fee. Includes fabrics, batting, composition book, cording, assorted trims, ribbon, needles, stabilizer, assorted buttons.

Student supplies. Basic sewing supplies^a, rotary cutter, ruler (7" x 14"), cutting mat, pencil and paper.

3640 Drop the Dogs

Debbi Lashbrook, *Bernina of America*

FRI (#3640B) 11:00 AM - 1:30 PM
SAT (#3640C) 8:00 - 10:30 AM
BERNINA, EXPO HALL

Lower your feed dogs and let your limitations disappear. You will experience thread painting, free-motion quilting and raw-edge appliqué techniques along with even more out-of-the-box opportunities for creative freedom.

\$20.00 kit fee. Includes assorted fabrics, batting, threads, needles, assorted trims, stabilizer, Wonder Tape, zipper.

Student supplies. Basic sewing supplies^a, rotary cutter, cutting mat, clear ruler (7" x 14"), pencil, paper.

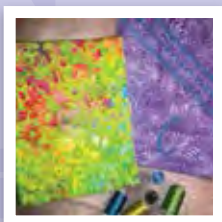
3641 Bobbin Work Revealed

Cindy Losekamp, *Sew Artfully Yours*

THU (#3641A) 11:00 AM-1:30 PM

SUN (#3641D) 8:00-10:30 AM

VIKING, EXPO HALL



Did you know some of the most gorgeous creative threadwork is executed upside down? Learn to create with beautiful, heavy threads in the bobbin. You'll see how to use your machines decorative stitches to make thick and beautiful embellishments on fabric, ready-to-wear garments—even paper. We'll be making a cover for a small notebook in this 'sampler' class.

\$20.00 kit fee. Includes batik fabric, batting, Steam a Seam 2 Lite, top and bobbin thread in choice of four colors, pattern, design, one spool of heavy thread.

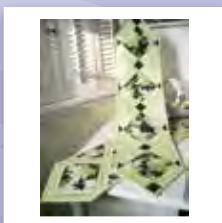
Student supplies. Basic sewing supplies^a, appliqué scissors, hand sewing needle, fabric markers (fade away, wash out, and white).

3642 Simple Point Table Runner or Wall Hanging

Lisa Maki, *Crooked Nickel Quilt Designs*

FRI (#3642B) 2:00-4:30 PM

JANOME, SHOWPLEX



You will enjoy this simple project with stunning results—and we mean *simple*! It is a beautiful table accent or wonderful gift. You can't make just one! A Simple On Point design using a fusible grid. A great quick project!

\$25.00 kit fee. Includes pattern, Simple Point fusible grid, pre-cut fabric, backing, binding, batting.

Student supplies. Appliqué pressing sheet, thread, 13 safety pins, scissors.

3643 Make a Flippy Gored Skirt

Marsha McClintock, *SAF-T-POCKETS Patterns*

THU (#3643A) 11:00 AM-1:30 PM

BABY LOCK, FAIRVIEW



Make this quick Flippy Gored Skirt using two pattern pieces and a serger. The comfortable elastic waistband allows a top to be tucked into the skirt or worn outside. Designed to be made from knits, you can use one, two or three different fabrics for a one-of-a-kind look. You will receive a downloadable pattern to print and bring to class. There will be garments in all sizes to try on for size and inspiration.

\$8.00 kit fee. Includes downloadable Flippy Gored Skirt pattern file (students should print ahead of time and bring with them to the class).

Student supplies. Basic sewing supplies^a, 60" knit fabric, waist measurement length of 1" knit elastic, four cones serger thread in matching or complementary color, scissors, ruler

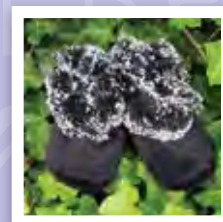
3644 So Soft Suede Slippers

Sheila McKay, *McKay Manor Musers*

FRI (#3644B) 2:00-4:30 PM

SUN (#3644D) 8:00-10:30 AM

PFAFF, EXPO HALL



Come make a pair of snuggly soft slippers for you or for a little one in your life! Made with only two pattern pieces so it is really easy! Lots of colors, fabrics and styles to choose from.

\$15.00 kit fee. Includes full color pattern with all sizes for kids and adults, suede and cuddle fabrics.

Student supplies. Basic sewing supplies^a including basic colored threads, long pins with *big* heads or clover clips.

3645 Serger Textured, Tucked and Quilted Electronic Tablet Cover

Julie Muschamp, *Quality Sewing and Vacuum*

FRI (#3645B) 2:00-4:30 PM

BABY LOCK, FAIRVIEW



Most people think sergers are used for garment construction. In this class using a serger, you will make a contemporary electronic tablet case using decorative wave stitches, asymmetrical twisted pintucks, crisscrossed belt loop strips and chainstitched quilting. Come away thinking of sergers in a new light.

\$25.00 kit fee. Includes Fabric for top and lining, two strips for belt loop, wave stitched trims, batting, ribbon for trim, thread for decorative stitching and serging, elastic cording.

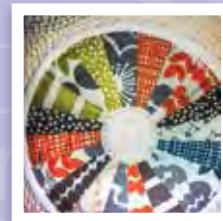
Student supplies. Full roll of Wonder Tape™, 12" clear ruler, FriXion™ pen that will show on most fabrics, pins, point turner, scissors.

3646 Make a Modern Dresden Plate Block

Michele Muska, *Simplicity Creative Group*

FRI (#3646B) 2:00-4:30 PM

VIKING, EXPO HALL



Learn how to cut and piece a Modern Dresden Block for a mini quilt wall hanging or a pillow. Techniques covered will include choosing appropriate fabrics, cutting, using a Mini Fat Cat quilting tool, and the correct method for Big-Stitch (Sashiko) quilting.

\$25.00 kit fee. Includes all fabrics (top and backing fabric), batting, Fat Cat Quilting tool, and detailed directions to make the project. All cutting, pinning and sewing tools will be provided for use during the class.

Student supplies. None.

3647 Woven Earrings on a Mini Loom

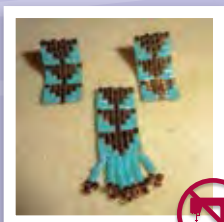
Carol Porter, Clover Needlecraft, Inc.

SUN (#3647D) 11:00 AM - 1:30 PM
FAIRVIEW, 1ST FLOOR

This is a wonderful introduction to the art of bead loom work. It's simple, but has all the techniques that you will need to get your fingers into beading. Wrap the loom, weave the beads and learn to finish your piece, then wear your earrings home! Carol will teach you how to increase and decrease, how to finish your work off the loom and as an extra bonus, how to create fringe!

No kit fee. Loom, beads, thread, beading needle, design, instructions will be provided.

Student supplies. Scissors.



3648 Chinese Dragon Boat Sachets

Marilyn Romatka, Taproot Folk Arts

SAT (#3648C) 2:00 - 4:30 PM
FAIRVIEW, 1ST FLOOR

These geometric gems are hand-crafted in China, filled with insect-repelling herbs, and hung up during the *Dragonboat Festival* in the hot fifth month of the lunar calendar. We will be filling our sachets with dried lavender—or whatever other fragrant herb you wish to bring. A simple technique that yields exquisite results! We will finish two sachets in class. The product of this class may be viewed at www.taprootfolkarts.com.

\$20.00 kit fee. Includes all materials needed for this project.

Student supplies. None.



3649 Designer Beaded Buttons

Cindy Rowell, Wonderfil Speciality Threads

SAT (#3649C) 11:00 AM - 1:03 PM
SUN (#3649D) 8:00 - 10:30 AM
THEATER, PAVILION 2ND FLOOR

This class will introduce you to a variety of couture hand beading techniques that will be incorporated into unique one-of-a-kind beaded buttons. Using a variety of different beads, each participant will make three different types and sizes of buttons that can be used to accent jackets, purses, jewelry, pillows, hats, quilted projects, and more.

\$20.00 kit fee. Includes buttons, fabric, assorted glass beads (seed beads, bugle beads, rocaille beads), assorted oat beads and pearls, beading needle.

Student supplies. Small scissors and glasses (if needed).



3650 Curve Mastery Mini Quilt

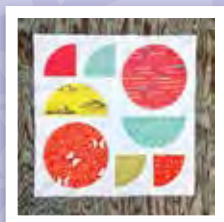
Latifah Saafir, Janome

THU (#3650A) 2:00 - 4:30 PM
SAT (#3650C) 8:00 - 10:30 AM
JANOME, SHOWPLEX

Make this fun mini quilt while learning to sew curves without using pins. Take the fear out of piecing curves with Latifah's techniques. In this mini quilt class you will conquer sewing three different curved shapes—a quarter circle (drunkard's path), half circle, and whole inset circle. Discover how easy sewing curves can be.

No kit.

Student supplies. One yard background fabric, eight 12"×12" squares various fabrics, fabric scissors, 28mm rotary cutter, cutting mat, acrylic ruler and straight pins



3651 Paper Pieced Envelope Pillow

Latifah Saafir, Janome

FRI (#3651B) 11:00 AM - 1:30 PM
JANOME, SHOWPLEX

Conquer your fear of paper piecing while sewing this fun 12" envelope back paper pieced pillow. Paper piecing allows you to piece with precision and accuracy that would be difficult to achieve with standard piecing. You will get tips for "thinking backward", learn a system for keeping your paper piecing in order and how to pre-cut your fabric to reduce waste. We will make a fun pillow in class, but this block can easily be the basis for a quilt.

No kit.

Student supplies. ½ yard of main fabric, two fat quarters of accent fabric, paper scissors, fabric scissors, rotary cutter, cutting mat, acrylic ruler, straight pins.



3652 Appliquéd Trivet

Nancy Sapin, Sulky of America

SUN (#3652D) 8:00 - 10:30 AM
JANOME, SHOWPLEX

Every household needs trivets. This project is all about using clothesline! Learn how to add an appliqué to the base fabric and discover how beautiful the sewing machine's built-in decorative stitches look using Sulky's 30 weight Blendable thread. This project also incorporates the very popular fabric wrapped clothesline technique. A variety of kit colors and designs will be available. Finished project is 8" square.

\$25.00 kit fee. Includes directions, pre-measured cotton clothesline cording, pre-cut fabric, clothespin, one spool of Sulky Blendable thread, Sulky Fuse 'n Stitch Stabilizer, fusible web, a 100/16 Denim/Jeans needle. (Fabrics may vary.)

Student supplies. Basic sewing supplies², rotary cutter with new blade, cutting mat (at least 12"×12"), quilters ruler (at least 12" long), extra iron (optional), non-stick pressing sheet & press cloth, good scissors for cutting appliqué and clothesline, glue stick.



3653 Fabric Manipulated Scrunched Scarf

Nancy Sapin, Sulky of America

SAT (#3653C) 8:00- 10:30 AM
VIKING, EXPO HALL



Designer scarves are all the craze! Discover how easy it is to create your own designer batik scarf. Using Sulky's 30 wt cotton Blendables and the machine's built-in decorative stitches, design your own unique one-of-a-kind scarf giving it that couture touch. Sulky's wash away stabilizer makes this project quick, easy, fun and possible to finish in class. All you need to do is wash out the Solvy at home. Your friends and family will say "I want one" as they admire your creativity. Different scarf designs will be shown and discussed so you can make "your" perfect scarf. Other uses for wash away stabilizers will also be discussed. All kits are different, first come first pick!

\$22.00 kit fee. Includes Sulky's Ultra Solvy (6½" x 48"), one yard of cotton batik fabric, assorted decorative threads, directions and a 90/14 Topstitch or Metallic needle.

Student supplies. Rotary cutter with new blade, cutting mat (at least 12" x 12"), quilters ruler (at least 12" long), sharp scissors, metal ripper or stiletto.

3654 Counted Cross Stitch Basics

Barbara Smith, Bobbie G's

THU (#3654A) 8:00- 10:30 AM
FRI (#3654B) 11:00 AM - 1:30 PM
SAT (#3654C) 11:00 AM - 1:30 PM
SUN (#3654D) 8:00- 10:30 AM
FAIRVIEW, 1ST FLOOR



Learn the basics of counted cross stitch such as beginning and ending stitches, achieving perfect tension, how to select patterns, choose appropriate fabrics, needle selection and more. Barbara has a wealth of information to get you started on your way to create your own beautiful counted cross stitch designs.

No kit. Materials will be provided.

Student supplies. Thread clippers, 6" hoop.

3655 Traditional Paper Piecing

Connie Spurlock, Sew Wonderful Dreams

SAT (#3655C) 11:00 AM - 1:30 PM
VIKING, EXPO HALL



Paper piecing is about ease and perfection and it is a technique that you can do. A pattern printed on paper (so it can easily be enlarged and reduced) is used as a base to duplicate the pattern on fabric. Never worry about the bias or removing the paper. The project is a birdhouse wall hanging or pillow top. Connie will tell you the difference between foundation piecing and paper piecing. You will easily master paper piecing and learn an easy method that will allow anyone to succeed. A coupon for a free paper piecing pattern of the student's choice can be redeemed at their booth.

\$20.00 kit fee. Includes pattern, fabrics, glue stick and quick press. A practice piece of fabric will be provided to practice the paper piecing technique.

Student supplies. Basic sewing supplies², neutral thread. Optional: Small mat, ruler and rotary cutter.

3656 Cuddle Plush Monogram Pillow

Cindy Surina, Custom Creations

THU (#3656A) 11:00 AM - 1:30 PM
SAT (#3656C) 8:00- 10:30 AM
PFAFF, EXPO HALL



Make a Cuddle Plush Pillow with monogram embroidery! You will see how easy it is to handle this luxurious fabric. Techniques and tips will be covered of how best to cut and sew the Cuddle Plush fabric and tips as well as embroidering. You will leave with a personalized pillow great for gift giving or dressing up your sofa or bed.

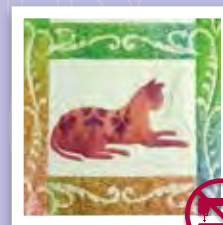
\$30.00 kit fee. Includes all supplies for project.

Student supplies. Basic sewing supplies².

3657 Over the Rainbow with Calico Cats

Joyce Teng, TSC Designs

THU (#3657A) 2:00- 4:30 PM
FRI (#3657B) 8:00- 10:30 AM
FAIRVIEW, 1ST FLOOR



Join in as Joyce leads you on a whimsical journey with unique uses of inks and stencils. Students will be using brilliant colors of Tsukineko Inks and a variety of TSC Designs stencils. The color blending and shading methods taught will allow you to produce dramatic layered stencil effects and soft rainbow color gradients on fabric. This fun class will stimulate your imagination, expand your knowledge, and enhance your fiber art skills.

\$30.00 kit fee. Includes Assortment of fabric blocks and lace, two sizes of Fantastix tips, a water brush pen, squeegee, assorted dabber sizes, sropper, spray bottle, Tsukineko API ink, Versacraft ink cube, Fabrico marker, and a TSC Design stencil.

Student supplies. Masking tape or painter's tape, paper towels, four pieces of 6" x 6" white cotton fabric, two pieces of 3" x 22" white-on-white print fabric, can of shaving cream (Barbasol works best), brown paper lunch bag, small bottle 70% or 90% alcohol.

3658 Thread Lace Scarf

Michelle Umlauf, Sulky of America

SAT (#3658C) 11:00 AM - 1:30 PM
PFAFF, EXPO HALL



Students will gain confidence in free motion sewing by making a lovely thread lace scarf where there are no mistakes! The finished scarf measures approximately 5" x 45", and is made entirely from Sulky Cotton Blendables thread.

This project is very easy to make and is suitable for all skill levels; however, the student should be comfortable with operating a sewing machine. Students may not finish the entire project during the scheduled class, but will have all the supplies to finish it at their leisure.

\$18.00 kit fee. Includes 6" x 45" Sulky Ultra Solvy Stabilizer, assorted Sulky threads.

Student supplies. Basic sewing supplies², tweezers, Sewer's Aid Permanent Marker (Sharpie), 14/100 Top Stitch Needle, 16/100 Jeans Needle, 6" x 24" ruler.

3659 Old Friends Made New Again

Katrina Walker, Katrina Walker/
Quality Sewing

THU (#3659A) 2:00-4:30 PM
VIKING, EXPO HALL

Do you have a favorite pattern or two, or three and worry that they're getting a bit stale? This class is the solution! This hands-on class will inspire you to look at your old patterns in a new way. See many different looks from the same patterns, and learn the tricks and techniques used to create them. You will add samples to a detailed step-by-step reference notebook, so you can easily recreate what you learned in class.

\$15.00 kit fee. Includes detailed printed notebook containing topics and techniques, step-by-step instructions, and sample gallery. Pre-cut fabrics, notions and all other materials.

Student supplies. Sewing shears, pins, thread snips (optional).



3660 Simply Sewing with Silk

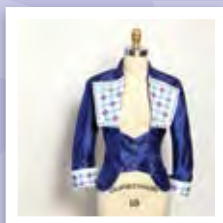
Katrina Walker, Katrina Walker/
Quality Sewing

SAT (#3660C) 2:00-4:30 PM
PFAFF, EXPO HALL

Back by popular demand! Silk is the most beautiful of natural fibers and can be the most intimidating. Successful sewing with silk is simple when you use the right tools and techniques. In this class you will build a reference notebook as you learn about the most common types of silk fabrics, and create step-by-step samples of specialty seams, seam finishes and hems appropriate for use with elegant silk designs. Appropriate pattern selection, silk fabric vocabulary and best uses for silk fabric types will also be discussed.

\$25.00 kit fee. Includes all silk fabric samples and sewing sample fabrics, machine needles, spool of silk thread, stabilizers, glue stick, use of fabric folding pen, binder and detailed instructional notebook pages with step-by-step instructions, sample mounting spaces and additional references.

Student supplies. Sharp shears, thread snips, extra-fine pins (optional), pen or pencil for taking notes.



3661 Scarlett O'Hara's Summertime Party Dress for Your 18" Doll

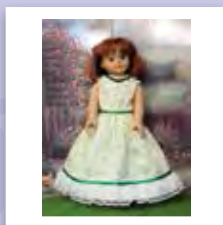
Nadeen Ward, Dolls R SEW Fun

FRI (#3661B) 8:00-10:30 AM
JANOME, SHOWPLEX

The plantation party scene in *Gone with the Wind* is a classic and the party dress that Scarlett wore is fantastic. Learn how to recreate this dress in a short period of time for your favorite 18" doll.

\$30.00 kit fee. Includes pattern, pre-cut fabrics, laces, ribbon, buttons, hook and loop tape.

Student supplies. Basic sewing supplies^a, hemostats (if available), point turner, hand sewing needles.



3662 Divine Machine Cover

Susan Zellers & Debi Kuennen-Baker, Baby Lock

THU (#3662A) 2:00-4:30 PM
BABY LOCK, FAIRVIEW

The serger is the ideal machine to use for creating this one-of-a-kind machine cover designed by Baby Lock. You'll create the base using easy piecing and construction skills, add decorative details using serger accessories and attachments, and embellish using decorative threads.

\$15.00 kit fee. Includes fabric, batting, decorative thread.

Student supplies. Dressmaker shears, thread snips, pins.



3663 Block-by-Block Tote

Susan Zellers & Debi Kuennen-Baker, Baby Lock

FRI (#3663B) 8:00-10:30 AM
BABY LOCK, FAIRVIEW

Creating this stunning tote is fun and easy. Starting with smaller squares you will build the tote sections using piecing techniques on the serger. Finish with a modern quilting technique for the serger, add suede handles, and a unique bottom using craft paper. Showcase your fabulous serger skills with this great tote!

\$30 kit fee. Includes fabric for tote front/back, lining, batting, thread, suede handles and craft paper for bottom.

Student supplies. Pins, scissors (thread snips) rotary cutter, mat & ruler (18" x 24" mat, 6" x 24" ruler).



3664 Elegant Clutch Purse

Susan Zellers & Debi Kuennen-Baker, Baby Lock

SAT (#3664C) 8:00-10:30 AM
SAT (#3664G) 2:00-4:30 PM
BABY LOCK, FAIRVIEW

This clever clutch is as much fun to create as it is to show-off. Decorative thread embellishments create a sophisticated design. The interior is full of pockets and zippers, all created using the serger. Learn how to create a decorative handle using belt loop binder. The final step, learning how put it all together using the serger. See why the serger is an ideal machine for construction and embellishment.

\$22.00 kit fee. Includes pattern, metal hardware, fabric, zippers, batting and decorative thread.

Student supplies. Thread snips, scissors, and pins.



3665 Serger Clutch Wallet

Suan Zellers & Debi Kuennen-Baker, Baby Lock

SUN (#3665D) 8:00-1:30 PM
BABY LOCK, FAIRVIEW

Creating this wallet is quick and easy on a serger. After creating a decorative front with threads and stitching, it is onto adding the detail inside. From the pockets to the zipper and other decorative accents, you will see how versatile the serger is in creating unique elements on any project. Creating this wallet is like eating chocolate; you just can't stop.

\$20.00 kit fee. Includes pattern, wallet hardware, fabric, zippers, batting and decorative thread.

Student supplies. Thread snips, scissors, and pins.



Four Needles

These sessions act as a pre-Expo bootcamp to get you started off right, and present an opportunity for in-depth learning or complex projects.

Basic sewing supplies: Fabric & paper scissors, pins, seam ripper, seam gauge, ruler, measuring tape, sewing needles, rotary cutter & mat, chalk, pencil, mini iron & pad (optional)

4 HOURS

\$50 TICKETS*

*Pre-registration is required for all Three Needle Sessions.

Four Needle Sessions (MACHINE)

WEDNESDAY

	Fairview BABY LOCK	Expo Hall BERNINA	Expo Hall BROTHER	Expo Hall PFAFF	Expo Hall VIKING	Paulhamus ROOM 1
8:00 TO 12:00	4608 Knit and T-Shirt Clinic <i>Candice Jewett</i>	4602 Quilted Strips Pouch <i>Susan Beck</i>	4612 The Extraordinary—Unlike Any Other—Fat Quarter Log Cabin Quilt <i>Marti Michell</i>	4603 Heirloom Puffing Pillow <i>Kandi Christian</i>	4601 Fantastic Feet and Stitches Pillow <i>Darrelle Anderson</i>	4606 Taste of Sulky Embroidery Zen <i>Sue Hausmann</i>
1:00 TO 5:00	4619 Going in Circles <i>Susan Zellers & Debi Kuennen-Baker</i>	4610 Sew Smooth Seams and Edges <i>Marla Kazell</i>	4605 The Quick Clutch Wallet <i>Pam Damour</i>	4617 Summer Picnic Pogaji <i>Katrina Walker</i>	4618 Stunning Borders & Bindings for Your Quilts <i>Gayle Wallace</i>	4606 Taste of Sulky Embroidery Zen <i>Sue Hausmann</i>

Four Needle Sessions (NO MACHINE)

WEDNESDAY

	Paulhamus ROOM 2	Paulhamus ROOM 3	Paulhamus ROOM 4	Fairview ROOM 1
8:00 TO 12:00	4611 Mini Beaded Art Appliqué Tissue Holder <i>Amy Loh Kupser</i>	4607 Pattern Alteration Basics <i>Lorraine Henry</i>	4616 Pants for You! Personal Fit & Styling <i>Kathy Ruddy</i>	4615 Couture Hand Beading on Fabric <i>Cindy Rowell</i>
1:00 TO 5:00	4604 Fitting & Designing for All Cup Sizes <i>Connie Crawford</i>	4614 Viking Knitting: Trichinopoly on a Dowel <i>Marilyn Romatka</i>	4613 So Soft Spring Shawl/Scarf <i>Cindy Surina</i>	4609 Fair Isle Techniques <i>Sheila Joyne</i>

4601 Fantastic Feet and Stitches Pillow

Darrelle Anderson, SVP Worldwide

WED (#4601X) 8:00 AM - 12:00 PM
VIKING, EXPO HALL

Have fun learning to use those "Fancy Feet" and machine stitches. Create a one of a kind pillow putting together a sampler of stitches using a variety of feet. Try out the *new* appliqué and pop-up stitches. Learn to make perfect piping also to create a ruched strip to finish a hidden zipper on the back. Not only will you make a designer pillow but you will be inspired to make many more.

\$20.00 kit fee. Includes fabric, trims, stabilizers, zipper.

Student supplies. Basic sewing supplies^a, fabric marking pencil.



4602 Quilted Strips Pouch

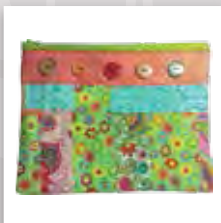
Susan Beck, Bernina of America

WED (#4602X) 8:00 AM - 12:00 PM
BERNINA, EXPO HALL

Colorful, fun, and useful, this simple zippered bag is made from wonderful hand-crafted fabric and decorated with an appliqué zipper and decorative buttons. The "patchy" fabric is stitched to a base of wool felt that serves as the lining of the bag. Once the fabric is created, the bag construction is easy and goes together quickly!

\$25.00 kit fee. Includes assorted pieces of linen, silk, yarn, cording, buttons, batting, stabilizer, and other support.

Student supplies. Basic sewing supplies^a, fabric marker. Optional: Rotary cutter, clear ruler, cutting mat up to 12" x 18".



4603 Heirloom Puffing Pillow

Kandi Christian, Sew Timeless

WED (#4603X) 8:00 AM - 12:00 PM
PFAFF, EXPO HALL

Learn the art of puffing which is the technique of inserting a gathered strip fabric between fabric or laces as used in making heirloom garments. Up your skills as you also learn puffing-to-entredeux, lace-to-entredeux, and lace-to-fabric. You also learn how to keep your 1/4" tucks straight and placed evenly.

\$30.00 kit fee. Includes 100% cotton batiste, 100% cotton French lace, 100% cotton entredeux, piping, buttons and instructions.

Student supplies. Basic sewing supplies^a, fabric marker, 60 weight white and ecru cotton thread.

4604 Fitting and Designing for All Cup Sizes

Connie Crawford, Fashion Patterns by Coni

WED (#4604Z) 1:00 - 5:00 PM
ROOM 2, PAULHAMUS

Using your personal measurements and cup sizes, learn the art of fitting a pattern and the importance of having the correct cup size for both woven and knit fabrics. Connie will demonstrate the different drapes for a perfect custom blouse block/sloper. She will also show you how to fit the gaposis of a neckline, make a shoulder and armhole fit properly and match the collar to your neckline.

\$5.00 kit fee. Includes written guidelines for selecting the blouse blocks and 1/3-scale patterns to make a couple of darted designs.

Student supplies. Scissors for cutting paper, 6" ruler, scotch tape, pencils.

4605 The Quick Clutch Wallet

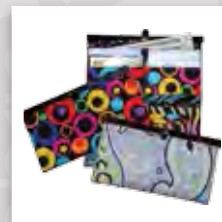
Pamela Damour, The Decorating Diva

WED (#4605Z) 1:00 - 5:00 PM
BROTHER, EXPO HALL

Now you can make this high end Vera Bradley™ style wallet yourself! This wallet has two large pockets for paper money, checkbook, and/or cell phone as well as six card pockets and a zippered pocket for loose change. It's like potato chips; you can't make just one! Kits will all be pre-cut to size.

\$25.00 kit fee. Includes all fabrics, stabilizers, and soft & stable cut to size, thread, wallet frame, and directions.

Student supplies. Rotary cutter, small cutting mat.



4606 Taste of Sulky Embroidery Zen

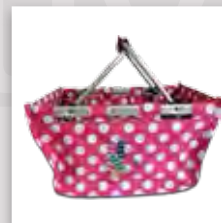
Sue Hausmann, Sulky & Baby Lock

WED (#4606X) 8:00 AM - 12:00 PM
WED (#4606Z) 1:00 - 5:00 PM
ROOM 1, PAULHAMUS

Experience a "taste" of Sue's Sulky Embroidery class. In this class you will learn the when, where, and why to use different stabilizers and threads, hooping techniques, embroidery on stretch fabrics, making templates for embroidery appliqué, free standing embroidery, dimensional embroidery and more! You will embroider five projects designed to experience different techniques, tips, threads, and stabilizers. Take home a market tote, girly shoe luggage tag, tee shirt pocket with dimensional embroidery, embroidered knit shirt (you bring the shirt), and a tassel bookmark! Stitch on Baby Lock embroidery machines and try the creative, time saving embroidery features.

\$30.00 kit fee. Includes blank projects, embroidery designs, eight different Sulky Stabilizers, Sulky Rayon and Blendable Threads, Puffy Foam, full color step-by-step instructions, six special Embroidery Zen Designs.

Student supplies. Light colored pre-washed tee shirt (no front pocket), small scissor for cutting threads, sharp trimming scissors (duck bill or similar), sewing machine needles size 90 topstitch and size 80 embroidery, fabric marking pen or chalk, tape measure or small ruler, long tweezers (optional).



4607 Pattern Alteration Basics: A Hands On Approach For A Great Fit

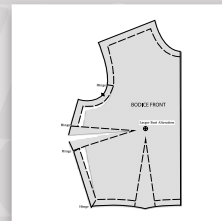
Lorraine Henry, LH Enterprises

WED (#4607X) 8:00 AM - 12:00 PM
ROOM 3, PAULHAMUS

Learn how to identify common figure variations, how to take and use body measurements effectively and apply to alter your pattern for a great fit. Learn the principles and guidelines for the three methods of alteration that you can choose from—Slash, Pivot and Slide—and the newest Seam method. Use 1/2-scale practice patterns in doing frequently needed alterations for each part of the body.

\$12.00 kit fee. Includes three ring binder, page protectors, instruction and information sheets, 1/2-scale practice patterns.

Student supplies. 10" x 12" piece of foam board or thick cardboard, small paper scissors, invisible or removable tape, straight pins, 6" to 12" clear ruler, black and red pencils.



4608 Knit and T-Shirt Clinic

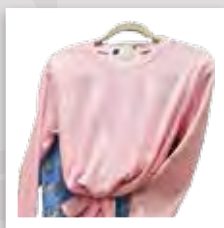
Candice Jewett, *Serger Caf*

WED (#4608X) 8:00AM - 12:00 PM
BABY LOCK, FAIRVIEW

This technique loaded class will focus on working with knits to make a child sized t-shirt with the serger. You will learn how to apply the quick and easy ready-to-wear industry technique to attach ribbing at the neckline and the wrist. Use the coverstitch to topstitch the ribbed neckline and hem in the round. Candice will share her techniques to turn a standard t-shirt pattern into a designer knit top as well as a review of the different types of knits.

\$30.00 kit fee. Includes high quality knit fabric, dyed to match ribbing, pattern, thread, samples of different knits and tip sheets for each type of knit.

Student supplies. Basic sewing supplies^a



4609 Fair Isle Techniques

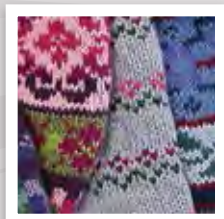
Sheila Joynes, *Debbie Macomber's A Good Yarn Shop*

WED (#4609Z) 1:00 - 5:00 PM
ROOM 1, FAIRVIEW

Learn the basics of the two-handed stranded technique. Sheila will share the best cast on technique for corrugated ribbing to prevent unsightly puckers in your purls. Learn where and how to join yarns to prevent having to weave in all the endless ends created in Fair Isle. Sheila will teach you the exactly how to add a split splice so it ends up in the right place for your color change. The techniques taught in this class will let your stitches breathe to keep your knitting even without those puckers. You will work on a six-color mini project.

\$7.00 kit fee. Includes five colors of sport weight yarn, stitch markers, pattern.

Student supplies. Size 4, 16" circular, or preferred needle for circular knitting, such as magic loop, or double points



4610 Sew Smooth Seams and Edges

Marla Kazell, *Marla Kazell*

WED (#4610Z) 1:00 - 5:00 PM
BERNINA, EXPO HALL

In this class, you will learn techniques so you can say no to puckered, crooked, lumps, bumps and bulky seams. Perfect seams and smooth flat edges are the result when you understand how to trim, grade, clip, notch, understitch and press properly. Marla will define these terms and show you how to incorporate the techniques in a variety of seams. Increase your skills as you make samples in class and learn how to sew smooth seams and edges. Whether you are new to sewing or a seasoned sewist, this class will refresh your skills.

\$20.00 kit fee. Includes pre-cut fabrics to make nine samples.

Student supplies. Basic sewing supplies^a, thread, pinking shears. Optional: Point turner and ham.



4611 Mini Beaded Art Appliqué Tissue Holder

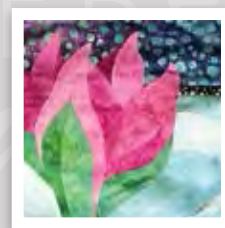
Amy Loh Kupser, *i-bead.com*

WED (#4611X) 8:00 AM - 12:00 PM
ROOM 2, PAULHAMUS

Beading is *hot!* Learn how to do a quick little raw edge appliqué design and have fun embellishing it with different beading techniques. Learn to do running lines, picots, dangly branch fringe, and more to create a tissue holder for your purse or to give away as a gift. The techniques learned can be applied to almost anything.

\$30.00 kit fee. Includes fabric, fusible web, bead mix for embellishing, pattern, detailed bead technique instructions. Additional Beader Basics kit will be available at beginning of class for \$5 which includes beading mat, thread snips and a bead scoop. Basic appliqué supplies will also be available in class for purchase.

Student supplies. Appliqué pressing sheet, appliqué or regular iron, sharp scissors for detail cutting, magnifier or reading glasses (if you use them), portable task lighting and extension cord, beading mat, thread snips or scissors, bead scoop.



4612 The Extraordinary—Unlike Any Other—Fat Quarter Log Cabin Quilt

Marti Michell, *Michell Marketing*

WED (#4612X) 8:00 AM - 12:00 PM
BROTHER, EXPO HALL

Bring four fat quarters; go home with four 13" Log Cabin blocks. Unlike other Log Cabin scrap quilts that feature a different fabric in every strip of a block, this Log Cabin quilt depends on orderly repetition of fabrics within each block. Learn a great method for cutting and sewing that makes these blocks fast and, better yet, square. The blocks you make in class can be the start of a big quilt or a very satisfactory wall-hanging, approx. 30" square. Bring quality fabrics for best results.

\$5.00 kit fee. Includes use of Log Cabin ABCs book and special Log Cabin Ruler during class. Kit fee may be applied to purchase of ruler, if desired. Student takes home free pattern excerpted from book.

Student supplies. Choose four compatible fat quarters of quality (18" x 21") including one dark and one of medium value. Bring one light fat quarter and a second different medium value fat quarter. A fifth fabric (at least 8" square) that contrasts with the other four fat quarters for the center squares. A 45mm rotary cutter with a sharp blade, cutting mat (at least 12" x 18"), acrylic ruler (at least 3" x 18"), thread, personal sewing notions, seam ripper.



4613 So-Soft Spring Shawl/Scarf

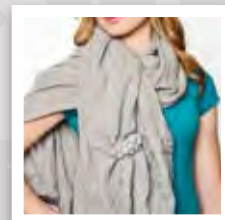
Cindy Surina, *Custom Creations*

WED (#4613X) 1:00 - 5:00 PM
ROOM 4, PAULHAMUS

Double gauze fabric is soft, lightweight—and not just for swaddling! Cindy will teach you how to create a boutique-worthy DIY shawl for spring. See how a simple running stitch can transform double gauze into a unique fabric full of movement and personality! Learn how to manipulate the texture of the gauze by controlling the length and tension of your stitches, and create dimension and texture using pom poms! Great for beginners looking for a simple, handmade project.

\$30.00 kit fee. Includes double gauze yardage, pom pom trim, perle cotton, hand sewing needle.

Student supplies. Scissors.



4614 Viking Knitting: Trichinopoly on a Dowel

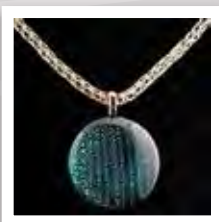
Marilyn Romatka, Taproot Folk Arts

WED (#4614Z) 1:00 - 5:00 PM
ROOM 3, PAULHAMUS

Also called "Viking Chain Netting" and "Viking Weaving", this jewelry technique is done with a thin wire on a stick! Examples of these chains have been found in various archeological sites in Scandinavia dating back to the 8th century A.D. This technique can be used to make necklaces, bracelets and earrings. The process is simple and straightforward and may be viewed at www.taprootfolkarts.com.

\$20.00 kit fee. Includes coiling dowel, scaffolding template, all wire, end caps, jumprings, findings, use of draw plate, illustrated handout.

Student supplies. Jewelry making tools (flat needle nose pliers, round needle nose, and wire snips).



4615 Couture Hand Beading On Fabric

Cindy Rowell, Wonderfil Specialty Threads

WED (#4615X) 8:00 AM - 12:00 PM
ROOM 1, FAIRVIEW

Beaded garments are making a statement in the world of fashion. Cindy will show you how fast and easy it is to accent any garment or quilted project using couture beading techniques. Learn a variety of beading techniques while working through Cindy's "Embeadery Technique Workbook". A variety of technique samples are stitched and then placed in the workbook for future reference. Students will see samples of beaded garments, and accessories that incorporate couture beading techniques.

\$30.00 kit fee. Includes fabric swatches, a variety of beads (seeds, bugles, pearls, oats, and crystals), threads, beading needles, 30 page detailed instruction work book.

Student supplies. Small scissors, reading glasses (if needed).



4616 Pants For You! Personal FIT! and STYLING!

Kathy Ruddy, kathyruddy.com

WED (#4616X) 8:00 AM - 12:00 PM
ROOM 4, PAULHAMUS

Create the only pant pattern you'll need for years to come! Measurements and visual keys are the foundation for creating a custom pants pattern. Watch as Kathy demonstrates how to correctly take measurements as you work in pairs to complete your individual measurement chart. You will receive a visual fit chart to analyze your fit and where to apply the changes. Using 1/2-scale patterns, practice the fitting changes outlined in the personal analysis to create your very own custom pant pattern.

\$25.00 kit fee. Includes seam allowance curve ruler, drafting pen, practice patterns and tutorial for fit & styling techniques.

Student supplies. Basic sewing supplies^a, good paper scissors, Scotch[®] Magic[™] Tape (green label), scissors, and four sheets of printer paper.



4617 Summer Picnic Pojagi

Katrina Walker, Katrina Walker/Quality Sewing

WED (#4617Z) 1:00 - 5:00 PM
PFAFF, EXPO HALL

Combine beautiful batiks, custom machine embroidery, and Modern American Pojagi construction techniques to create a gorgeous wall hanging or table runner for your home. From building your own lovely embroidery motif, to learning new ways to enjoy your favorite textiles - this class will open your eyes to new design possibilities. Come and play with us!

\$20.00 kit fee. Includes all pre-cut batik fabrics, needles, stabilizer, and threads needed to complete the project.

Student supplies. Basic sewing supplies^a, USB storage device to take their embroidery design home. Optional: 18" rotary cutting mat, ruler, and rotary cutter.



4618 Stunning Borders & Bindings for Your Quilts

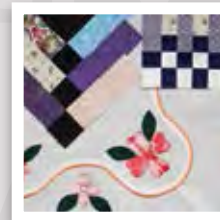
Gayle Wallace, Custom Machine Quilting

WED (#4618Z) 1:00 - 5:00 PM
VIKING, EXPO HALL

Using pre-cut kits and index cards, create your own personal library of interesting and creative finishes for quilts to keep as a reference. Learn sneaky tricks and creative ideas for joining bindings, square corners, bias bindings, and adding a special touch to quilts. Each card will have the information of exactly what was stitched to it. Samples and information will be together, along with a number of color pages of information.

\$30.00 kit fee. Includes pre-cut fabrics to create a dozen finishes for quilts, index cards to stitch them to,

Student supplies. Seam ripper, scissors, pins, neutral color thread



4619 Going In Circles

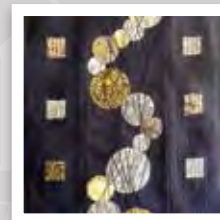
Susan Zellers & Debi Kuennen-Baker, Baby Lock

WED (#4619Z) 1:00 - 5:00 PM
BABY LOCK, FAIRVIEW

By combining simple block construction with cut out circles a modern quilt is created on the serger. By adding the chain stitch and decorative chain stitch for embellishment and quilting, a new twist is added to this quilt. See how the serger can add impact to any quilt or project.

\$25.00 kit fee. Includes fabric for front and backing, batting, decorative thread.

Student supplies. Scissors, pins, rotary cutter, mat, 6" x 24" ruler.



Style Shows

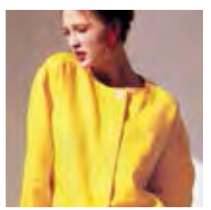
Come see new patterns, trends and design ideas from leading pattern designers. Admission is free with your Expo entrance fee, but seating is limited. All style shows are held on the Expo Runway located upstairs in the Pavilion.

Every Day is An Adventure So Let's Explore!

Louise Cutting, Cutting Corners Inc

THU/FRI/SAT 11:30 AM

If you're like most women, you wear 20% of your clothes 80% of the time. We'll show you clothing you'll be happy to wear every day. *Cutting Line Designs* and *Shapes Patterns* offer clean lines and simple profiles that are comfortable to wear, easy to modify, and mix and match well. They can give you the look you need and want, for the lifestyle you live today. See how you can look confident and fabulous 100% of the time.



Simply the Best of Spring 2016 from Simplicity Pattern Company

Deborah Kreiling, Simplicity Patterns

FRI/SAT 9:30 AM

See the best of Spring 2016 at your favorite Expo style show from Simplicity. Simply the best on trend and sewable patterns from Simplicity's favorite collections, including Project Runway, MimiG and Leanne Marshall. From the Simplicity workshop to the Puyallup runway, all sewn up and ready to inspire you!

The Best of 4-H Fashion Revue

Laura Mendoza, Washington State 4-H Youth

SAT 12:30 PM

Presenting the best of the 2015 State 4-H Fashion Revue Competition. These young people have sewn some amazing fashions as members of 4-H. Come see the future of fashion through the talents of 4-H youth from 9 to 19.

Capsule Wardrobes for the Runway

LoriAnne Reeves, LoriAnne Pattern Collection

THU/FRI/SAT 10:30 AM

Capsule Wardrobes are all the rage. It's a great way to organize your own wardrobe that works with your lifestyle. See how this concept comes alive on the runway as LoriAnne introduces our newest styles in Capsule Wardrobes created using LoriAnne Pattern Collection patterns. This collection of patterns are all about shape, comfort, and fit with designs that will inspire your inner stylist.



The Vogue and Butterick Creative's Closet

Marcy & Katherine Tilton, marcytilton.com

THU/FRI/SAT 1:30 PM

Vogue and Butterick designer's Marcy and Katherine Tilton showcase a current collection from their own closets, from the pattern envelopes and from the closets of friends. Patterns and fabrics that are sure to inspire and ignite your creativity. The Tilton Sisters' presentation is always fun and will send you home eager to sew!



McCalls, Vogue, Butterick, Kwik Sew and Palmer/Pletsch Style for Spring with Styling Tips by Melissa Watson

Melissa Watson, Palmer/Pletsch

THU/FRI/SAT 2:30 PM

Melissa Watson will share exciting wear now designs for McCalls, Vogue, Butterick, Kwik Sew and Palmer/Pletsch. These garments are spot-on and ready-to-sew for spring. See what is trending and get fitting and sewing tips for runway looks. Get new fashion fabric and unique styling suggestions from Melissa to integrate into your spring wardrobe.

Free Stage

Get inspired with a selection of *free* style shows presented daily in the Showplex.

Stabilizing Solutions for All Fabrics and Embroideries!

Floriani Educator, RNK Distributing/Quality Sewing

THU/SAT 8:30 AM
FRI/SUN 11:30

Learn about the various stabilizers and embroidery design techniques available for all fabric types. Understand and solve some of those nagging problems with your embroideries—no more ruined garments, puckered embroideries, or off-center designs. Remove the mystery and you are on the way to perfect results every time!

Fifteen Sewing Skills You Should Know

Debra Justice, Labours of Love

THU/SAT 11:30 AM

Debra shares her special, “go beyond the basics” skills everyone who uses a sewing machine should know, balancing your stitch and tips for choosing the correct needles. Build from there with techniques you’ll use over and over, including French seams, perfect topstitching, invisible scarf edging, ruffles, pleats, “reverse threaded” darts, the rolled hem, hemming jeans and knits, invisible and regular zipper, plus making and applying bias tape and piping. These are the tried and true, foundation skills that will provide sewing satisfaction that you’ll use for the rest of your sewing life.



Meet Your Feet: Show and Tell

Debra Justice, Labours of Love

FRI/SUN 1:30 PM

Debra’s *Learn To Sew With Your Feet* book comes to life in Puyallup. She will demonstrate a wide variety of presser feet and show clever additional uses for each one. Learn how to use the feet you already own to the max, and identify the ones worthy of purchase. See the Ruffler, Braiding, Pintuck, Darning, Bias Binding, Invisible Zipper, and Flower Foot; and get solutions for difficult fabrics with the Roller, Teflon® and Walking Foot. Learn to attach pearls and beads, stipple, fix damaged lace and see the Button Foot attach a variety of buttons, closures and embellishments. We’ll even step back in time with a vintage feet “show and tell.”



U 2 Can Quilt (No Experience Required!)

Lisa Maki, Crooked Nickel Quilt Designs

THU/SAT 4:30 PM
FRI/SUN 8:30 AM

Yes, you can! Don’t worry be happy! You will witness a simple, fast and achievable technique that will interest any level of quilter. The Pellon fusible grid makes your points perfect and is a time saver for us all! You will see 14 different projects using the same technique. You will be amazed!

American Sewing Guild Style Show

Eileen Moebius, ASG Group

SAT 10:30 AM

Celebrate the amazing diversity of our sewing community with the American Sewing Guild. This annual event features fabulous fashion, home décor, and more sewn by Guild members from around the Northwest—and even the U.S.! You’ll be sure to be inspired by their innovative creations as they reveal their tips and techniques for success. Join us for the most fun fashion show yet!

Fusible, Painted, and Embellished Wall Hangings

Sue Purdy, Sue’s Studs & Stencils

THU/SAT 2:30 PM
FRI/SUN 9:30 AM

Sue is the self-proclaimed queen (or princess) of no talent embellishment. Watch her spray paint stencils, fuse crystals and other iron on designs. She will share tips to electronically cut fabric to fuse for the watercolor quilts and more. With Sue’s ‘no talent’ embellished techniques, you will see quick to complete projects with high end results.

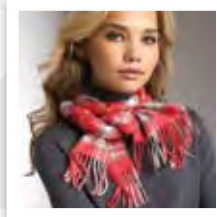


Scarves and More: Your Necks Best Friends

Carol Steinbrecher, Style Solutions LLC

THU 10:30 AM

Scarves, ties, jewelry, collars—they all fit around your neck! These are all great accessories and it’s time to pay them some well needed attention. See this lively demonstration on how to tie scarves, and choose styles and colors that will flatter your face and figure. We may even look at some fun tie knots men can use too! Neckwear—we’ve got you covered.



All about Plush Lush Fabrications

Cindy Surina, Shannon Fabrics

THU/SAT 3:30 PM
FRI/SUN 12:30 PM

Learn the properties of working with specialty fabrics. Learn about Shannon Fabrics and all of the fabrics they have to offer. Cuddle—a superior minky type plush microfiber fabric, faux fur, satin, terry cloth, Cuddle Suede, Embrace Double Gauze 100% cotton and more. See lots of examples and samples.

Original Fabric Art

Joyce Teng, TSC Designs

THU/SAT 8:30 AM
FRI/SUN 10:30 AM

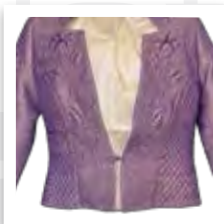
Let Joyce show you a simple but effective technique that will change plain yardage into one of a kind fabric art! See how Joyce uses a combination of Tsulkeniko inks, several simple tools and materials, combined with exciting stencils that will create your own style of fabric art. Use the fabrics for any project you may be working on; traditional or art quilts, wearable art, clothing or home decor, the list is endless. Be inspired by Joyce's many inspirational pieces!

Gourmet Garments

Gayle Wallace, Custom Machine Quilting

THU/SAT 1:30 PM
FRI 3:30 PM

Garments made at home do not have to have the "loving hands at home" look. They can be stunning, amazing and fun to wear. Casual or evening out can be created with your own imagination and talent. Use the ideas in the garments shown to give you a spring board to creating one of a kind items to be worn with pride.



Introducing the NEW 18" Doll Book from Nadeen!

Nadeen Ward, Dolls R SEW Fun

THU/SAT 12:30 PM
FRI/SUN 2:30 PM

Learn so many things that can be done on your basic serger and more advanced sergers for your 18" dolls. You will touch and feel the samples from the book and start to understand how easy the garments are to make for your dolls.



Make AND Take

Make a quick, fun project right at Expo with help from our vendor experts! Visit the sewexpo.com for details and the latest schedule.*

FIBERS ETC. (PAVILION #181)

Knit Rosette \$10
Knit an elegant flower

CARRIAGE COUNTRY QUILTS (SHOWPLEX #535)

Coloring and Embroidery \$5
How to color on fabric and stitch.

PARADISO DESIGNS/QUILTWORKS NW (SHOWPLEX #1307)

Mod Embroidery with Cool Materials! \$9
Embroidery with metallic thread on dyed wool.

PACIFIC FABRICS (SHOWPLEX #728)

Anchors Away Towel \$10
Nautical-theme monogrammed, hand embroidered appliqué towel.

Traditional Hand Appliqué \$10
Learn the ins and outs of needle turn hand appliqué.

Out to Sea Bunting \$10
Nautical motifs using fusible appliqué methods

GHEE'S (SHOWPLEX #524)

Cup Cozy \$10
Embellish this ready-made cup cozy.

Cord Management \$10
Embellish two ready-made cord keepers.

Quick Zipper Bracelet \$10
Add snaps to create a fun, unique bracelet.

WONDERFIL SPECIALTY THREADS (SHOWPLEX #1107)

Stitch a Card \$7
Learn an embroidery-on-paper technique.

SHIBORI DRAGON (PAVILION #117)

Sashiko Pincushion \$8
Create a Japanese Sashiko hand embroidered pincushion.

SEW WONDERFUL DREAMS (SHOWPLEX #328)

Chicken Appliqué Tea Towel \$10
Learn all you need to know about working with fusible appliqué.

DOLLS R SEW FUN (SHOWPLEX #422)

Dolly Headbands Complete the Outfit \$7
Make a glitzy headband for your favorite doll

*Projects and participating vendors subject to change. For details, visit our website (www.sewexpo.com/make-and-take-project-arena.htm) or look for the Make and Take signs at the show.

Vendor Floor

Hundreds of vendors means a *HUGE* selection of unique fabrics, notions and sewing products to shop. You're likely to find something that you *didn't even know* existed!

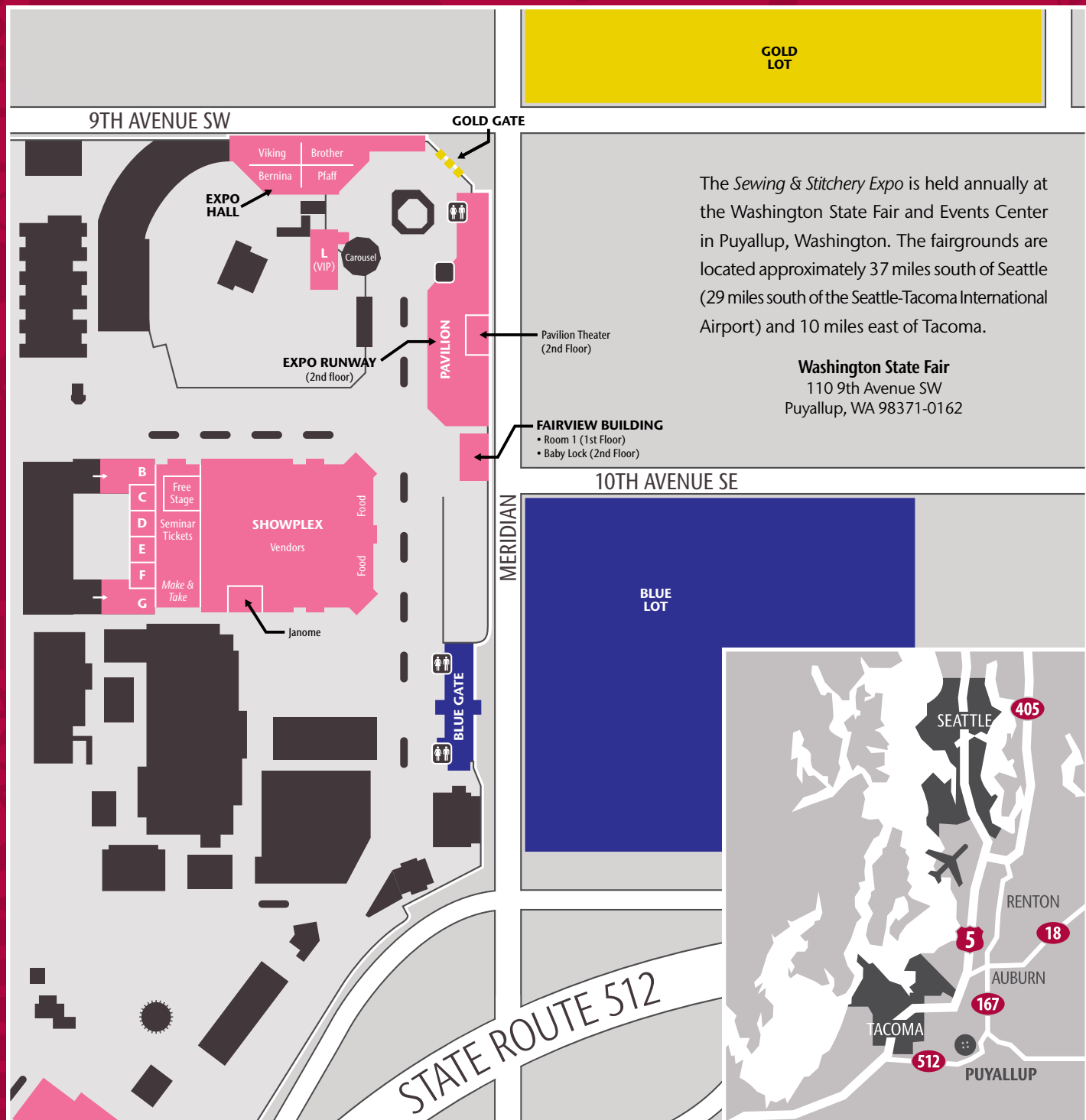
1 Source Publications
A Quilting Roadshow
Adorable Ideas by John Deer
AllAboutBlanks.com
American Sewing Guild
Andrew's Gammill NW LLC
Aria Design Studio/
Lisa Kan Desgins
Bear Paw Quilts
Bee Unique Designs
Bernina of America
Billie's Designer Fabrics
Bobbie G Designs
Bo-Nash (North America)
BravoBella
Brie Kriebel Clothing
Bubbles Menagerie
Bullard Designs
ByAnnie.com LLC
Calico Country Lynden WA
Calico Threads
Carol's Zoo
Carriage Country Quilts*
Clover Needlecraft
CraftOptics
Crawford Designs *Sewing Made Simple Patterns*
Creative Feet
Crooked Nickel Quilt Design
Custom Creations
Custom Keepsakes
Machine Embroidery
Cutting Corners Inc.
Dakota Collectibles
Dana Marie Design Co.

Debbie Macomber's
A Good Yarn Shop
diFranca Fiber Arts
Dolls R Sew Fun*
Dutch Quilter
Elegant Expressions
Quilting & Fiber Arts
Elna
Fabric D'Eva
Fabric Studio
Fancy Image Yarn
Fashion Patterns by Coni
Fashion Supplies
Faux Chenille
Fibers Etc
Fine French Laces
FitNice System
Flair Designs
Flower Box Quilts
G & P Trading
Ghee's*
Glitz and Glamour
Great Yarns
Hancock Fabrics
Hancy Creations, Inc.
Heartway International
Heirloom Stitches
Hirsh International
Hofmann Originals
i-bead.com/i-stitch.com
Indonesian Batiks
Island Quilter
Janome America
JJ Handworks/Pavelka Designs
Jodees Incorporated

Jordan Fabrics
Juki
Kaleidoscope Collections LLC
Kali Basi Designs
Kathyruddy.com
Kathy Quilts
Koala
Labors of Love Sewing Supplies
Leilani Arts
Linda Kubik
Longbranch Fiber Farm
LoriAnne Pattern Collection
Loralie Designs
Lorraine Henry Enterprises/
Two Easy Tape Co
Lumenaris
Marbled Arts
Marcia Derse Fabrics
Marcytilton.com
Martelli Enterprises
Mary Jo Hiney Designs
McKay Manor Musers
MeasureMatic
Mica's Room
Michell Marketing Inc.
Mike Gunther Industries, Inc.
Momo-Dini Embroidery Art
More the Merrier Designs
My Fair Lady
Nancy's Sewing Basket
Nature's Footprint
Nancy Nix-Rice
Of The Earth
Off the Wall Grid
Olympic Wool Works
Pacific Fabrics & Crafts
Paganoonoo
Palmer Pletsch
Pamela's Patterns
Pendleton Woolen Mill Store
Perfect Borders
Pieciful Designs
Pincushion Boutique
Professional Sewing Supplies
Quality Sewing
Quick Points Ruler
Quilt Gallery
Quilt In A Day
Quilted Trillium
Quilting On the Grid
QuiltSmart Inc.
QuiltWorks Northwest*
Reets Rags to Stitches
Renaissance Flowers
Rita's Best Designs
Rochelles Fine Fabric
and Quilting
Rusty Crow
Saf-T-Pockets
Sara's Bloom
Sew Artfully Yours
Sew Cherished
Sew Chic
Sew Timeless
Sew Wonderful Dreams*
Sewing Machine Service Co.
Shannon Fabrics
Shear Precisions Scissors/
Kai Scissors
Shibori Dragon*
Simplicity
Sisterhood of Quilters
Sisters In Stitches
Starr Designs
Stella Lighting
Stitches in Time Antiques
Style Solutions
Sudberry House
Sue's Sparklers
Sulky of America
Superior Events
Sylvia Fine Furniture/Viking
Sewing and Vacuum
Taproot Folk Arts, LLC
The Decorating Diva
The McCall Pattern Co.
The Pine Needle
The Quilt Barn
The Quilt House, Inc.
The Sewing Workshop
The Smuggler's Daughter
The Stitchin' Post
The Wool House
TreadleArt
Treasures of the Gypsy
Trims on Wheels
TSC Designs
Vaune
Vogue Fabrics
Whims Watercolor Quilts
Wild Ginger Software
Winline Textile Products
Wonderfil Specialty Threads*
Wooden Spool Designs
Wynwoods Gallery & Studio
Yarnflowers by Sweaterkits
Yesterday's Charm
Your Perfect Quilting Space

*Participating in the Expo Make & Take Arena. See page 39.

Expo Map



Sewing & Stitchery
e.x.p.o.

WSU Conference Management
2606 West Pioneer
Puyallup, WA 98371-4998

notions
FREE
PARKING
 KNITTING
 creative
 DESIGNS
 SCISSORS
 \$25,000+
 INDOOR
 IN PRIZES
 LACE
 machines
 SEWING ★ STARS
 embroidery
 INSPIRATION
SHOP 480
 VENDOR
 BOOTHS
 SEWING
 FABRICS
 monogram
 PATTERN
 HANDS-ON
 Quilting
 Hundreds of
 CLASSES
 machine
 5 style
 shows
 TRIM
 felt
 TEXTURE
 4 DAYS
 ROTARY CUTTER
 SEAM
 RIPPER
 sashiko
 leather
 Yarn
 evening
 events
 wool