

esday - Friday 9.30 am to 4.30 pm
Saturday - 9.00 am to 12 Noon

128 William St Rockhampton 4700

Phone: 07 4927 6628

Fax: 07 4921 1099

Email: info@patchworkparadise.com.au

Web: www.patchworkparadise.com.au

www.facebook.com/PatchworkParadiseRockhampton

Patchwork Paradise Newsletter

April 2017

30% SHOP REDUCTION SALE

BEGINS TUESDAY 18TH APRIL

(min. fabric cut 0.5m. Excludes wadding, Quiltworx TOM Patterns
and items already on Sale)

Loyalty cards can be redeemed but not signed off on sale products.

PATCHWORK PARADISE WILL BE CLOSED FOR EASTER AND ANZAC DAY.

New Fabrics in store:



Panels

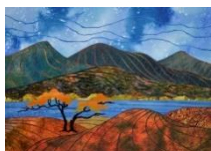


Kids Flannels



Just yummy fabrics

Gloria Loughman (reknown International tutor), is visiting the shop to conduct workshops in May.
We are very lucky and privileged to have Gloria visiting us again.



Linear Landscapes

Thur/Fri 25/26 May 9.30am – 3.30pm

Cost \$300

Patterned Landscapes

Sat/Sun 27/28 May 9.30am-3.30pm

Cost \$300



Numbers for these 2 workshops are strictly limited. There are only a couple of vacancies in the Linear Landscape Class left. To secure your spot a \$50 non-refundable deposit is required at the time of booking. For more information contact us at Patchwork Paradise.

April Classes:

Melly & Me Toys: with Suellen

Friday 7th and Saturday 8th April

Cost \$25/day and/or \$45/2 days + requirements

(Class price includes 1x Melly & Me Toy pattern of your choice).

You can select 1 of our large range of Melly & Me toy patterns. The idea of this class is to make a toy over 1 or 2 days. I have made a few of her toys but not all, however, I will be on hand in the classroom to help with any issues.

Art Time: with Suellen

Friday 21st and Saturday 22 April

Cost \$15/day

The idea of these days is to have lots of fun and the chance to play with our fabrics and threads and in the process learn some techniques and share ideas with like minded people. Some of you will have something that needs finishing or maybe something that you'd like to begin. I will be in the classroom with you and happy to offer advice. It is however not a structured class.

Go Go Girl Bag Class: with Suellen

Friday 28 April

Cost \$25/day + pattern + requirements



July Classes:

Visiting Tutor : Chris Timmins **Saturday 1 July – Tuesday 4 July 2017**

Chris will be conducting classes on Bargello, Stripped Drunkards Path, Hunters Star, Squidgy and Take 6 Quilts. For more information and bookings please contact us at Patchwork Paradise.

