

# Patchwork Pillow

Finished Project Size:  
16" x 16"



## Supplies Needed

- 2 - 18" x 21" Pre-cuts (Fabric A - Red Tonal)
- 1 - 18" x 21" Pre-cut (Fabric B - White)
- Coordinating thread
- 16" pillow form or 1 pkg. polyester fiberfill
- 1 - 17" Square of muslin (optional)
- 1 - 17" Square of quilt batting (optional)
- Pencil
- Rotary cutter, mat, and acrylic ruler
- Sewing machine and basic sewing supplies
- Iron

## Instructions

**Before you begin:** Read all instructions before beginning project. Use 1/4" seam allowance and sew fabrics with right sides together unless otherwise noted. Press seam allowances in direction of arrows.

### Cutting

(Cut the size given; seam allowances are included.)

**Fabric A - red tonal:** 1 - 17" x 17" (pillow back)  
1 - 4 1/2" square  
6 - 3" squares  
8 - 2 1/2" squares  
2 - 2 1/2" x 12 1/2" strips  
2 - 2 1/2" x 16 1/2" strips

**Fabric B - white:** 6 - 3" squares  
8 - 2 1/2" x 4 1/2"  
4 - 2 1/2" squares

Dia. A



Draw



Layer

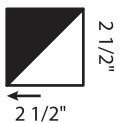


Stitch



Cut

Make 12



Dia. B



Draw

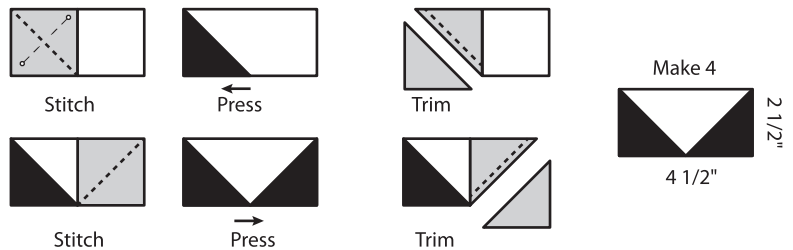


## Piecing

### 1. Make half-square triangle units:

On the wrong side of the six white 3" squares, draw a pencil line from corner to corner. Pair up the six white 3" squares with the six red 3" squares, right sides together (Dia. A). Sew 1/4" on each side of the marked line. Cut on the marked line to make 12 - 2 1/2" half-square triangle units. Press seam allowance toward the red triangle and square up if necessary.

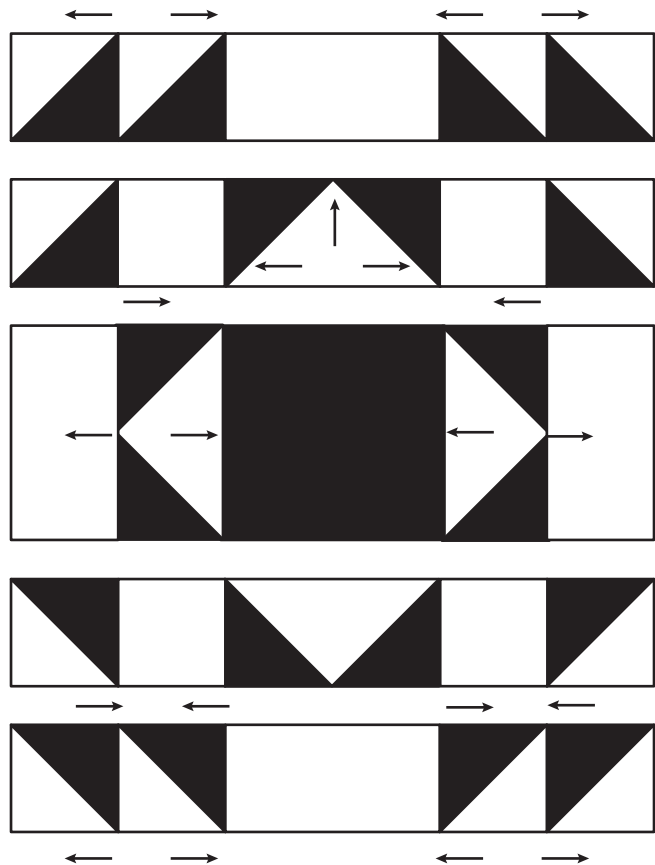
Dia. C



### 2. Make 'flying geese' units (stitch and flip technique):

On wrong side of the eight red 2 1/2" squares, draw a line from corner to corner (Dia. B). Place a red 2 1/2" marked square on top of a white 2 1/2" x 4 1/2" rectangle, matching edges on one end. Pin in place (Dia. C). Stitch on the line, then flip triangle open to check. Press gently. Trim the seam allowance to 1/4". Place another red 2 1/2" marked square on the opposite end of the rectangle, overlapping the red triangle and stitch on the line. Press and trim excess fabric. Repeat steps to make four 'flying geese' units.

Dia. D



3. Layout the block pieces as shown (Dia. D). Check placement and direction of all triangles. Pin, matching intersections, and sew into rows.

4. Sew rows together, checking placement and matching intersections. Press gently from the wrong side. Block should measure 12 1/2" square.

5. Sew a red 2 1/2" x 12 1/2" strip to each side and a red 2 1/2" x 16 1/2" strip to top and bottom. Pillow front should measure 16 1/2" square.

6. **Optional:** Layer muslin, batting, and pieced pillow top (right side up). Baste with safety pins or with long stitches to hold the layers together. Quilt as desired by machine or by hand.

## Finishing

7. Place backing and patchwork top right sides together; trim backing to same size as top. Pin and sew around edges, leaving an 8" opening for turning. Turn right side out and insert pillow form or stuff with polyester fiberfill. Slip stitch opening closed.

