

Place a second sheet of paper over the top, then gently flip the whole unit over.



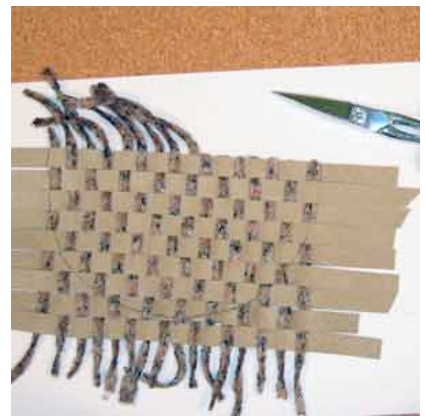
Step 8: Repeat step 6, being sure to secure all loose fibers across the top of the basket, down both sides and across the bottom.

Allow to dry before proceeding with the next step.



Step 9: After the glue is dry, trim the fibers across the top of the basket.

Then cut out the basket, cutting on the inside of the drawn line so that the line will be cut away and will not show on the finished basket.



Our finished basket. Check all edges. Secure with additional glue if necessary.



Step 10: Gently place the completed basket on the quilt. Glue all edges around the basket to the quilt top.

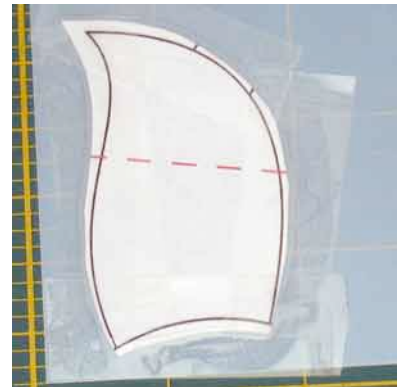
Step 11: Appliqué the last two leaves to the quilt top, following steps 4 and 5 under “Let’s Begin Our Applique”



Let’s Make Our Sunflowers

Step 1: Trace the petals from one sunflower on to a sheet of white paper. Each sunflower uses the same 8 petals so you will only need to make 8 templates.

Super Tip: Cut around the traced paper pattern leaving a scant 1/8” all around. Place the pattern on the template plastic. Tape ALL edges securely to the template plastic. Cut out using kitchen sheers or paper scissors. Cut directly on the pattern line. The addition of the tape adds stability when cutting and will produce a much smoother cut. If you do have a rough edge, sand it with an emery board.



Step 2: Mark the right side of each template. I have added paper dots that I had left over from a garage sale. Most pens and pencils smear as I work with them. These dots eliminate that problem.



Step 3: Fold the fat quarter for the sunflower petals in half right sides together. Trace around each petal three times. This will result in 24 pieces.

Place a thin layer of interfacing or quilter’s fleece on your work surface. Place the marked sunflower fabric over the interfacing or quilter’s fleece.

Stitch each petal. Begin stitching 1/4” before the marked line and stitch 1/4” beyond the end of the stitched line. Leave the bottom of each leaf open for turning.

