

Dearest Heart

Quilt Size: 36" x 36"

Designed by Heidi Pridemore



Die cutting & traditional cutting instructions included!

Fabric Requirements:

Featuring the "Curious Dream" fabric line from Windham Fabrics.

Yardages are for die-cutting the project, you will need a little less for traditional cutting.

• Spirals - Blue (A)	¼ yard
• Hearts & Arrows - Gray (B)	¼ yard
• Words - Peach (C)	½ yard
• Squares - Gray (D)	¼ yard
• Squares - Peach (E)	¾ yard
• Hearts & Arrows - Dark Peach (F)	¼ yard
• Hearts & Arrows - Teal (G)	¼ yard
• Words - White (H)	⅓ yard
• Squares - Teal (I)	⅓ yard
• White (J)	½ yard
• Heart Locks - White/Blue (K)	½ yard
• Stripe - Blue (L)	⅜ yard

All shape designs ©1990-2014 by AccuQuilt. AccuQuilt®, AccuQuilt GO!®, GO!® and GO! Baby® are registered trademarks of AccuQuilt. Used with permission.

You will also need:

You will also need:

- 1 ½ yards of fabric for the backing
- 44" x 44" piece of batting
- GO! Qube Mix & Match 6" Block Set (55775)
- GO! Qube 6" Companion Set (55779)
- GO! Queen of Hearts (55325)
- Basic Sewing Supplies & Tools
- Fusible Web



Dearest Heart

Quilt Size: 36" x 36"

Designed by Heidi Pridemore

*Please read all instructions before starting. Measurement on borders are approximate. Measure your quilt top before cutting.
Use a ¼" seam allowance unless otherwise noted. Width of Fabric = WOF, Length of Fabric = LOF*

Note: Below we have provided both die-cutting and traditional cutting instructions. You only need to use one set of cutting instructions in order to complete the project. The chosen method is up to you.

Die Cutting Instructions:

Spirals - Blue (A)

- Cut one 4" x WOF strip. Sub-cut into five 4" squares. Use the Go Qube Die #1 to die-cut five 3 ½" squares.

Hearts & Arrows - Gray (B)

- Cut one 5" x WOF strip. Sub-cut into five 5" squares. Use the Go Qube Die #4 to die-cut twenty large triangles.

Words - Peach (C)

- Cut two 5 ½" x WOF strips. Sub-cut into fifteen 3" x 5 ½" strips. Use the Go Qube Die #5 to die-cut sixty small triangles.
- Cut one 5" x WOF strip. Sub-cut into four 5" squares. Use the Go Qube Die # to die-cut sixteen 2" squares.

Squares - Gray (D)

- Cut one 3" x WOF strip. Sub-cut into five 3" x 5 ½" strips. Use the Go Qube Die #5 to die-cut twenty small triangles.
- Cut sixteen Small Hearts using GO! Queen of Hearts Die*.

Squares - Peach (E)

- Cut five 4 ½" x WOF strips. Sub-cut into forty-four 4 ½". Use the Go Qube Die #11 to die-cut forty-four backgrounds.
- Cut four Medium Hearts using GO! Queen of Hearts Die*.

Hearts & Arrows - Dark Peach (F)

- Cut four Large Hearts using GO! Queen of Hearts Die*.

Hearts & Arrows - Teal (G)

- Cut sixteen Small Hearts using GO! Queen of Hearts Die*.

Words - White (H)

- Cut one 8" x WOF strip. Sub-cut into four 8" squares.

Squares - Teal (I)

- Cut five 2" x WOF strips. Sub-cut into twenty-four 2" x 8" strips.



Die Cutting Instructions - Continued:

White (J)

- Cut one 8" x WOF strip. Sub-cut into ten 1 ¼" x 8" strips and ten 1 ¼" x 6 ½" strips.
- Cut two 1 ¼" x 30 ½" strips
- Cut two 1 ¼" x 29" strips.

Heart Locks - White/Blue (K)

- Cut four 3 ½" x WOF strips. Sub-cut into forty-four 3 ½" squares. Use the Go Qube Die #12 to die-cut forty-four Arcs.

Stripe - Blue (L)

- Cut four 2 ½" x WOF strips for the binding.

Backing (Your Choice)

- Cut one 44" x 44" piece for the backing.

Traditional Cutting Instructions:

Spirals - Blue (A)

- Cut one 3 ½" x WOF strip. Sub-cut into five 3 ½" squares.

Hearts & Arrows - Gray (B)

- Cut one 4 ¼" x WOF strip. Sub-cut into five 4 ¼" squares. Cut the squares across both diagonals to make twenty large triangles.

Words - Peach (C)

- Cut two 2 ¾" x WOF strips. Sub-cut into thirty 2 ¾" squares. Cut the squares across one diagonal to make sixty small triangles.
- Cut one 2" x WOF strip. Sub-cut into sixteen 2" squares.

Squares - Gray (D)

- Cut one 2 ¾" x WOF strip. Sub-cut into ten 2 ¾" squares. Cut the squares across one diagonal to make twenty small triangles.
- Cut sixteen Small Hearts**.

Squares - Peach (E)

- Cut forty-four Template One pieces.
- Cut four Medium Hearts**.

Hearts & Arrows - Dark Peach (F)

- Cut four Large Hearts**.



Traditional Cutting Instructions - Continued:

Hearts & Arrows - Teal (G)

- Cut sixteen Small Hearts**.

Words - White (H)

- Cut one 8" x WOF strip. Sub-cut into four 8" squares.

Squares - Teal (I)

- Cut five 2" x WOF strips. Sub-cut into twenty-four 2" x 8" strips.

White (J)

- Cut one 8" x WOF strip. Sub-cut into ten 1 ¼" x 8" strips and ten 1 ¼" x 6 ½" strips.
- Cut two 1 ¼" x 30 ½" strips
- Cut two 1 ¼" x 29" strips.

Heart Locks - White/Blue (K)

- Cut forty-four Template Two Arcs.

Stripe - Blue:

- Cut four 2 ½" x WOF strips for the binding.

Backing (Your Choice)

- Cut one 44" x 44" piece for the backing.

* Following the manufacturer's instructions to press fusible web to the wrong side of the fabric before die cutting.

** Following the manufacturer's instructions, trace the listed number of each template onto the paper side of the fusible web. Roughly cut out each template about 1/8" outside the drawn lines. Press each template onto the wrong side of the fabrics as listed on the templates. Cut out each template on the drawn lines.



Assembly Instructions:

1. Follow Figure 1 to press one Fabric F large heart, one Fabric E medium heart, four Fabric D small hearts and four Fabric G small hearts to one 8" Fabric H square.
2. Finish the raw edges of the appliqued shapes with a decorative stitch such as a blanket or satin stitch to complete Block One.
3. Repeat to make Four Block One squares total.
4. Sew together one Fabric C small triangle and one Fabric D small triangle to make one Unit 1 square (Fig. 2). Repeat to make twenty Unit 1 squares total.
5. Sew one Fabric C small triangle to each side of one Fabric B large triangle to make one Unit 2 rectangle (Fig. 3). Repeat to make twenty Unit 2 rectangles total.
6. Sew one Unit 2 rectangle to each side of one 3 1/2" Fabric A square to make the middle row. Sew one Unit 1 square to each end of one Unit 2 rectangle to make the top row. Repeat to make the bottom row. Sew the rows together to make one Unit 3 square (Fig. 4). Repeat to make five Unit 3 squares.
7. Sew one 1 1/4" x 6 1/2" Fabric J strip to each side of one Unit 3 square. Sew one 1 1/4" x 8" Fabric J strip to the top and bottom of the Unit 3 square to make one Block Two square (Fig. 5). Repeat to make five Block Two squares total.

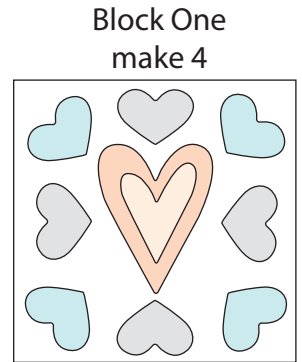


Fig. 1

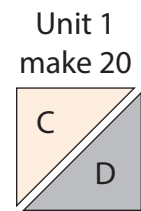


Fig. 2

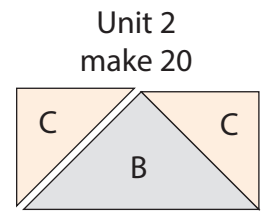


Fig. 3

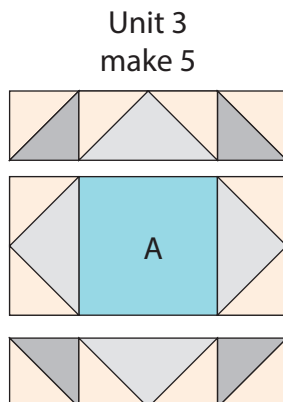


Fig. 4

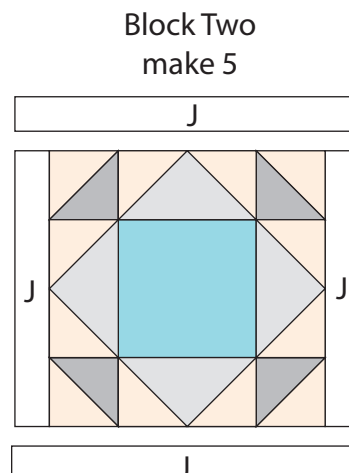


Fig. 5



8. Mark the centers of the curve on the Fabric K Arc (Template 2) piece and the background Fabric E Background (Template 1) piece.
9. Align the arc and background pieces, right sides together, matching the center mark on each piece. Pin the two pieces together at the center mark and then at each end. Carefully sew the two pieces together using a 1/4" seam. Flip open the sewn unit and press to make one 3 1/2 Unit 4 square (Fig. 6).
10. Repeat Steps 8-9 to make forty-four Unit 4 squares total.

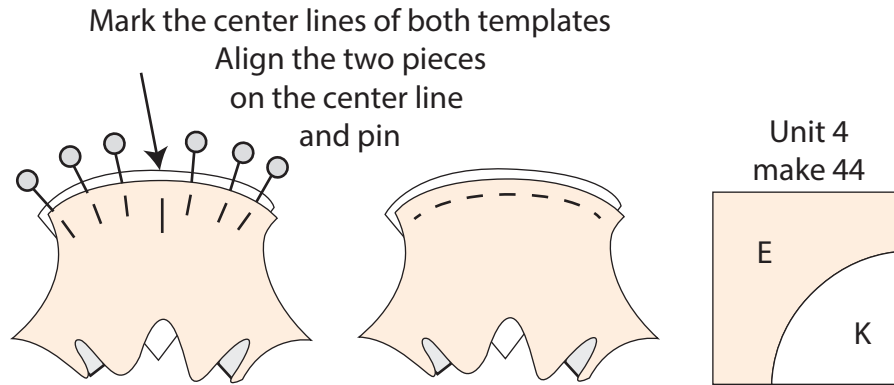


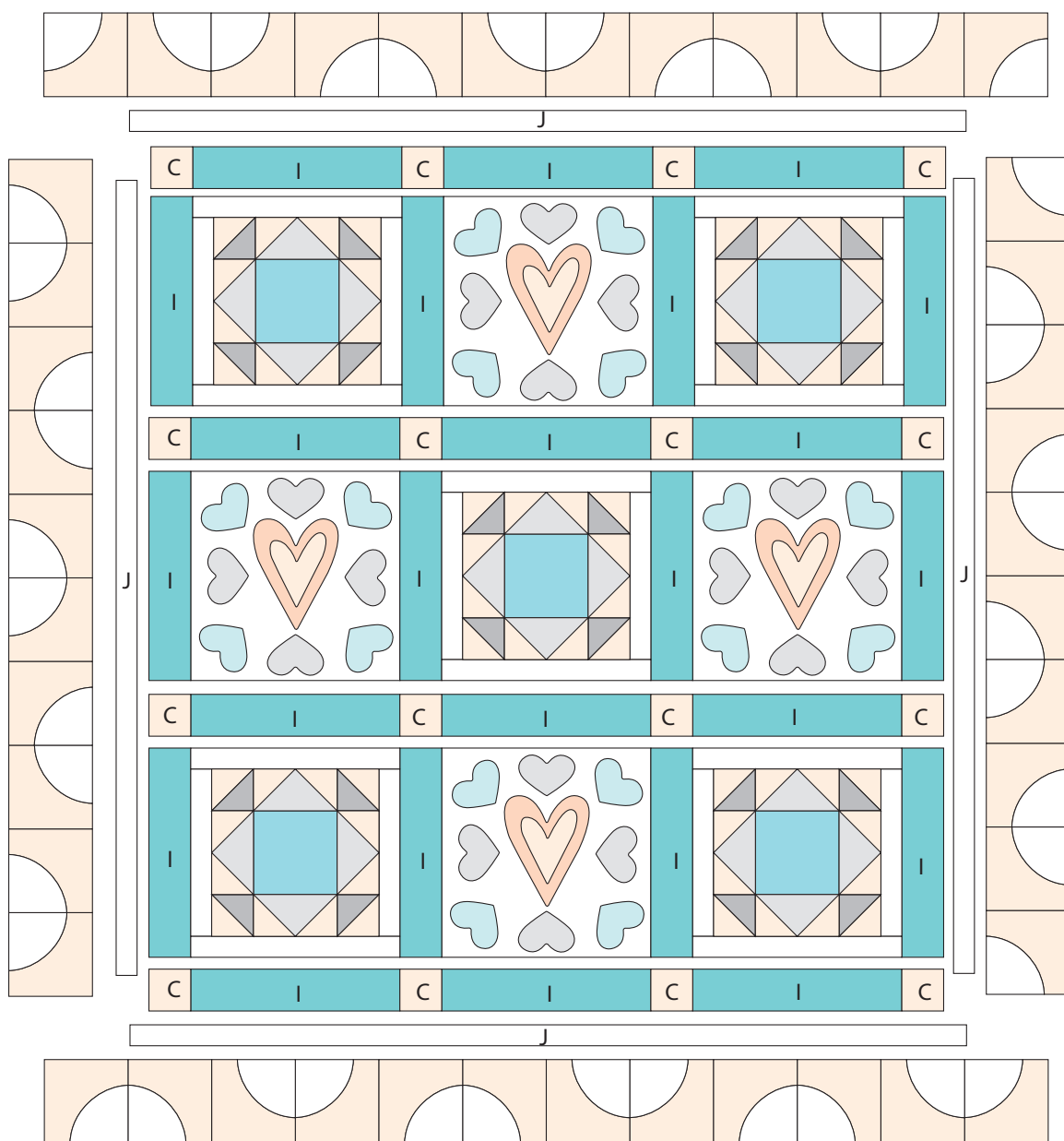
Fig. 6

Quilt Top Assembly Instructions: *Refer to the Quilt Layout while assembling.*

11. Sew together two Block Two squares, one Block One square and four 2" x 8" Fabric I strips, alternating the blocks and strips to make Row One. Repeat to make Row Three.
12. Sew together two Block One squares, one Block Two square and four 2" x 8" Fabric I strips, alternating the blocks and strips to make Row Two.
13. Sew together four 2" Fabric C squares and three 2" x 8" Fabric I strips, alternating them, to make one sashing strip. Repeat to make four sashing strips total.
14. Sew together the four sashing strips and three rows, alternating them, to make the quilt top.
15. Sew one 1 1/4" x 29" Fabric J strip to each side of the quilt top. Sew one 1 1/4" x 30 1/2" Fabric J strip to the top and bottom of the quilt top.
16. Following the quilt layout sew together ten Unit 1 squares to make each side border. Sew the borders to the quilt top.

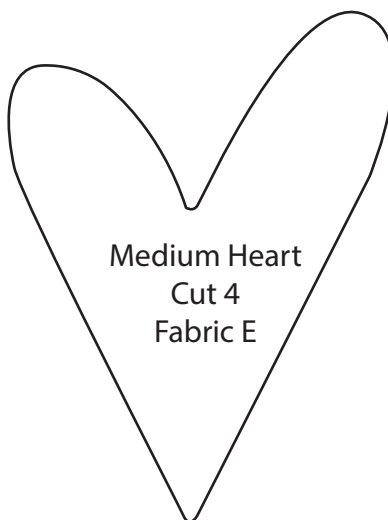
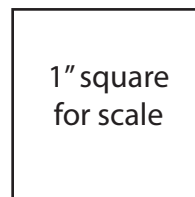
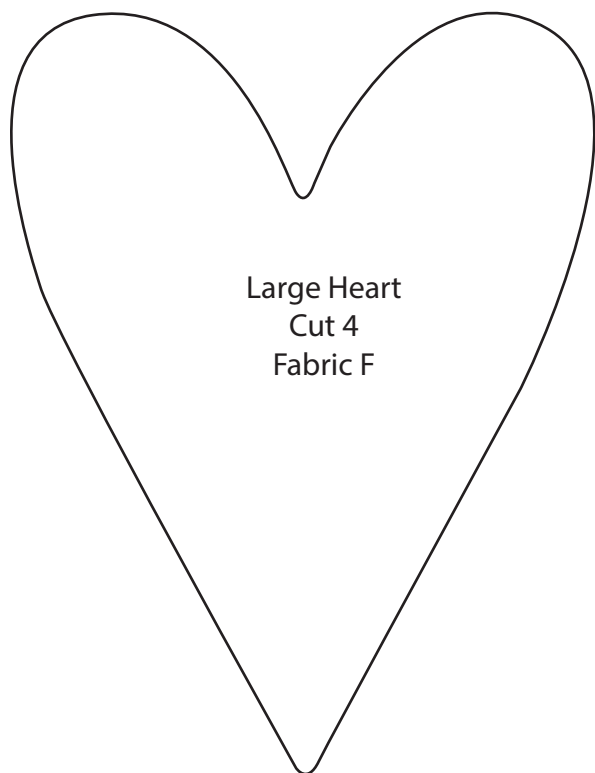
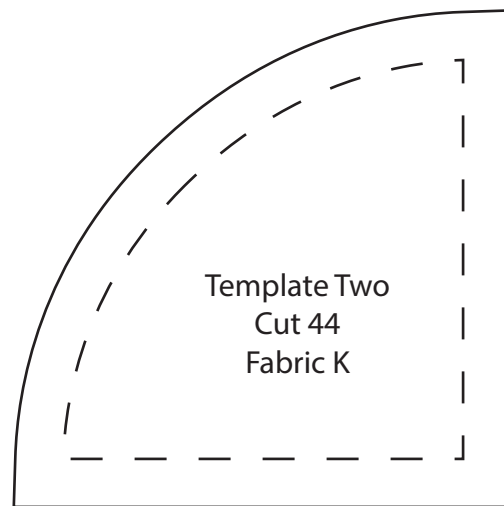
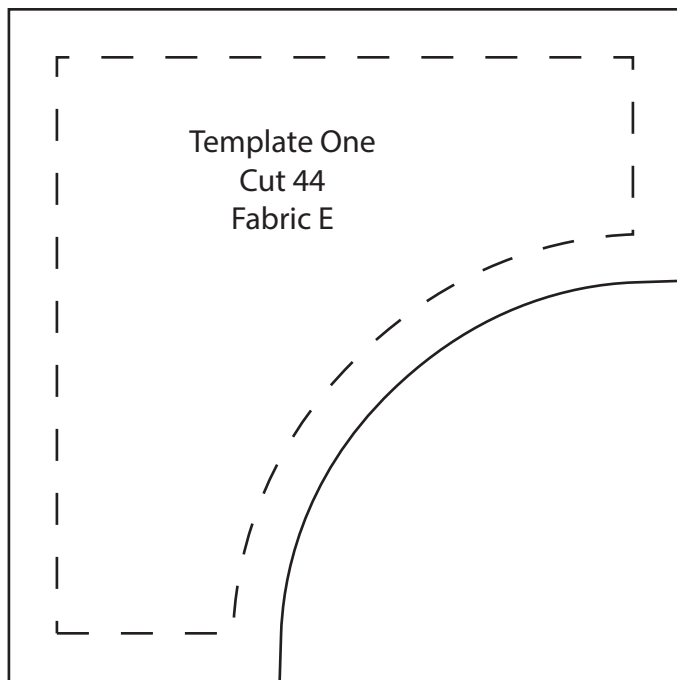


- 17.** Following the quilt layout sew together twelve Unit 1 squares to make the top border. Repeat to make the bottom border. Sew the borders to the quilt top.
- 18.** Layer and quilt as desired.
- 19.** Sew the four 2 ½" x LOF Fabric L strips together, end to end with 45-degree seams, to make the binding. Fold this long strip in half lengthwise with wrong sides together and press.
- 20.** Bind as desired.



Quilt Layout





All shape designs ©1990-2014 by AccuQuilt. AccuQuilt®, AccuQuilt GO!®, GO!® and GO! Baby® are registered trademarks of AccuQuilt. Used with permission.

