

UPDATED ON JUNE 15, 2016

# Primitive Stitches

A Free Project Sheet  
NOT FOR RESALE

By Emily McGlothlen of The Little Red Hen

Quilt Design by Heidi Pridemore



Quilt 2

Skill Level: Advanced Beginner



Henry Glass & Co., Inc.



facebook

Finished Quilt Size: 45 1/2" x 45 1/2"  
49 West 37th Street, New York, NY 10018  
tel: 212-686-5194 fax: 212-532-3525  
Toll Free: 800-294-9495  
[www.henryglassfabrics.com](http://www.henryglassfabrics.com)



# PRIMITIVE STITCHES

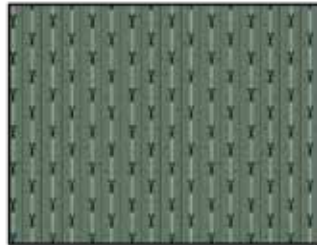
Finished Quilt Size: 45 ½" x 45 ½"

Quilt 2

## Fabrics in the Collection



Primitive Panel Blocks - Navy  
8815P-77



Scissor Stripe - Lt. Blue  
8814-17



Scissor Stripe - Purple  
8814-55



Bobbins - Lt. Blue  
8816-17



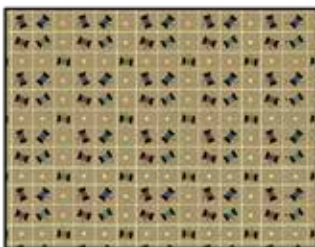
Bobbins - Pink  
8816-22



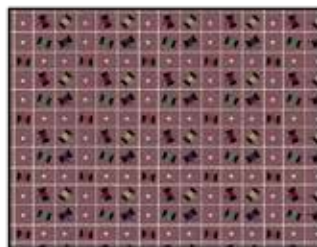
Bobbins - Burgundy  
8816-89



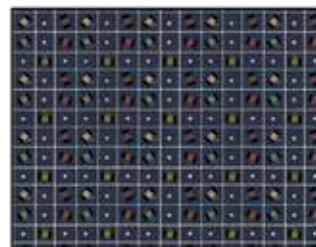
Patchwork Multi - Burgundy  
8817-89



Spool Grid - Tan  
8818-44



Spool Grid - Purple  
8818-55



Spool Grid - Navy  
8818-77



Twigs - Green  
8820-66



Twigs - Navy  
8820-77



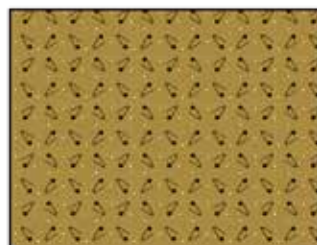
Sewing Stripe - Multi  
8821-17



Character Toss - Lt. Blue  
8822-17



Character Toss - Tan  
8822-44



Safety Pins - Gold  
8823-33



Safety Pins - Tan  
8823-44

# PRIMITIVE STITCHES

Quilt 2

Page 1

## Materials

2/3 yard	Safety Pins - Tan (A)	8823-44
2/3 yard	Twigs - Navy (B)	8820-77
1/3 yard	Safety Pins - Gold (C)	8823-33
1/3 yard	Bobbins - Pink (D)	8816-22
1/3 yard	Spool Grid - Navy (E)	8818-77
3/4 yard	Bobbins - Burgundy (F)	8816-89*
1/3 yard	Twigs - Green (G)	8820-66
1/3 yard	Spool Grid - Purple (H)	8818-55
1/3 yard	Scissor Stripe - Lt. Blue (I)	8814-17
1 1/4 yards	Patchwork Multi - Burgundy (J)	8817-89
3 yards	Character Toss - Lt. Blue (Backing)	8822-17

\*Includes binding

## Cutting Instructions

*Please note: all strips are cut across the width of fabric (WOF) from selvage to selvage edge unless otherwise noted.*

### From the Safety Pins - Tan (A), cut:

- (1) 9 1/2" x WOF strip. Sub-cut strip into (4) 9 1/2" squares.
  - (1) 9 7/8" x WOF strip. Sub-cut strip into (4) 9 7/8" squares.
- Cut the squares across (1) diagonal to make (8) triangles.

### From the Twigs - Navy (B), cut:

- (1) 9 7/8" x WOF strip. Sub-cut strip into (1) 9 7/8" square.
- Cut the square across (1) diagonal to make (2) triangles.
- (2) 2 1/4" x 36 1/2" WOF strips.
  - (2) 2 1/4" x 40" WOF strips.

### From the Safety Pins - Gold (C), cut:

- (1) 9 7/8" x WOF strip. Sub-cut strip into (1) 9 7/8" square.
- Cut the square across (1) diagonal to make (2) triangles.

### From the Bobbins - Pink (D), cut:

- (1) 9 7/8" x WOF strip. Sub-cut strip into (1) 9 7/8" square.
- Cut the square across (1) diagonal to make (2) triangles.

### From the Spool Grid - Navy (E), cut:

- (1) 9 7/8" x WOF strip. Sub-cut strip into (1) 9 7/8" square.
- Cut the square across (1) diagonal to make (2) triangles.

### From the Bobbins - Burgundy (F), cut:

- (1) 9 7/8" x WOF strip. Sub-cut strip into (1) 9 7/8" square.
- Cut the square across (1) diagonal to make (2) triangles.
- (5) 2 1/2" x WOF strips for the binding.

### From the Twigs - Green (G), cut:

- (1) 9 7/8" x WOF strip. Sub-cut strip into (1) 9 7/8" square.
- Cut the square across (1) diagonal to make (2) triangles.

### From the Spool Grid - Purple (H), cut:

- (1) 9 7/8" x WOF strip. Sub-cut strip into (1) 9 7/8" square.
- Cut the square across (1) diagonal to make (2) triangles.

### From the Scissor Stripe - Lt. Blue (I), cut:

- (1) 9 7/8" x WOF strip. Sub-cut strip into (1) 9 7/8" square.
- Cut the square across (1) diagonal to make (2) triangles.

### From the Patchwork Multi - Burgundy (J), cut:

- (2) 3 1/2" x 40" Length of Fabric (LOF) strips.
- (2) 3 1/2" x 46" WOF strips from the remaining fabric, piece as needed.

### From the Character Toss - Lt. Blue (Backing), cut:

- (2) 54" x WOF strips for the backing. Sew the strips together and trim to make the 54" x 54" back.

## Sewing Instructions

1. Sew (1) Fabric B triangle and (1) Fabric A triangle together to make (1) Block One (Fig. 1).
2. Sew (1) Fabric C triangle and (1) Fabric A triangle together to make (1) Block Two (Fig. 2).
3. Sew (1) Fabric I triangle and (1) Fabric A triangle together to make (1) Block Three (Fig. 3).

Block One

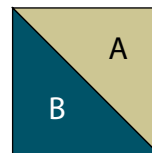


Fig. 1

Block Two

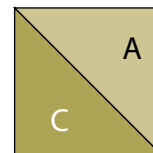


Fig. 2

Block Three

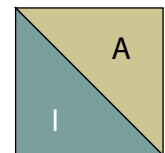


Fig. 3

4. Sew (1) Fabric I triangle and (1) Fabric B triangle together to make (1) Block Four (Fig. 4).
5. Sew (1) Fabric D triangle and (1) Fabric C triangle together to make (1) Block Five (Fig. 5).
6. Sew (1) Fabric D triangle and (1) Fabric A triangle together to make (1) Block Six (Fig. 6).

Block Four

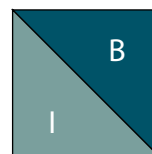


Fig. 4

Block Five

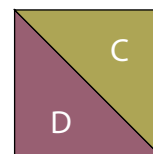


Fig. 5

Block Six

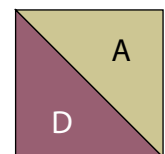


Fig. 6

7. Sew (1) Fabric H triangle and (1) Fabric A triangle together to make (1) Block Seven (Fig. 7).

8. Sew (1) Fabric H triangle and (1) Fabric G triangle together to make (1) Block Eight (Fig. 8).

9. Sew (1) Fabric F triangle and (1) Fabric E triangle together to make (1) Block Nine (Fig. 9).

Block Seven

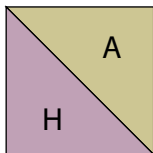


Fig. 7

Block Eight

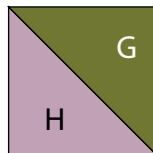


Fig. 8

Block Nine

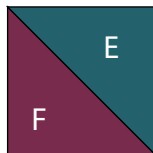


Fig. 9

10. Sew (1) Fabric E triangle and (1) Fabric A triangle together to make (1) Block Ten (Fig. 10).

11. Sew (1) Fabric G triangle and (1) Fabric A triangle together to make (1) Block Eleven (Fig. 11).

12. Sew (1) Fabric A triangle and (1) Fabric F triangle together to make (1) Block Twelve (Fig. 12).

Block Ten

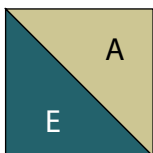


Fig. 10

Block Eleven

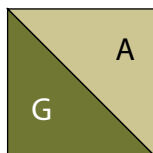


Fig. 11

Block Twelve

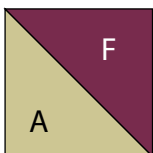


Fig. 12

### Quilt Top Assembly

*(Refer to the Quilt Layout while assembling.)*

13. Sew (1) 9 1/2" Fabric A square, (1) Block One, (1) Block Two and (1) 9 1/2" Fabric A square together, in that order, to make Row One.

14. Sew (1) Block Three, (1) Block Four, (1) Block Five and (1) Block Six together, in that order, to make Row Two.

15. Sew (1) Block Seven, (1) Block Eight, (1) Block Nine and (1) Block Ten together, in that order, to make Row Three.

16. Sew (1) 9 1/2" Fabric A square, (1) Block Eleven, (1) Block Twelve and (1) 9 1/2" Fabric A square together, in that order, to make Row Four.

17. Sew the (4) rows together in numerical order to make the Center Block.

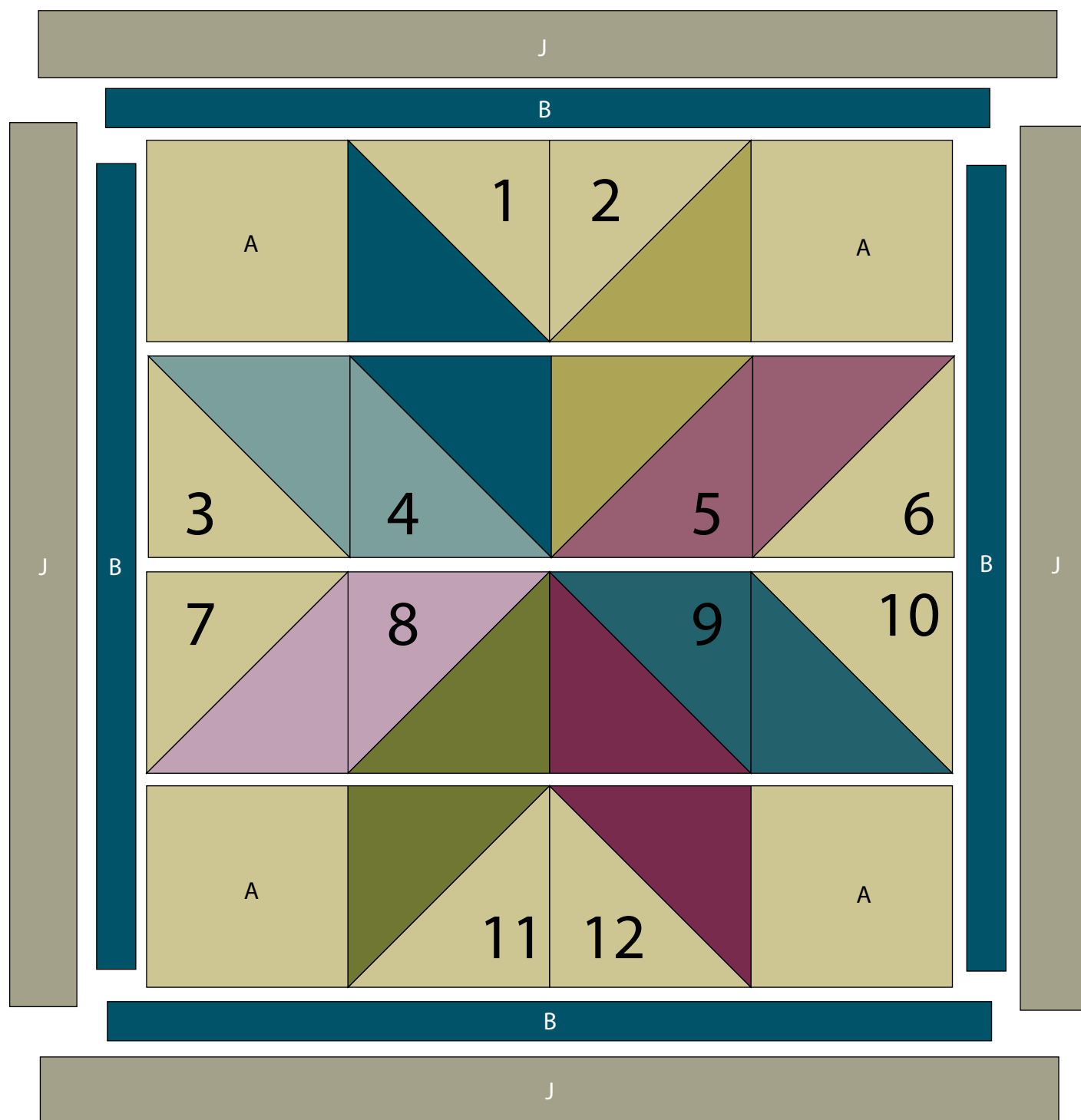
18. Sew (1) 2 1/4" x 36 1/2" Fabric B strip to each side of the Center Block. Sew (1) 2 1/4" x 40" Fabric B strip to the top and to the bottom of the Center Block.

19. Sew (1) 3 1/2" x 40" Fabric J strip to each side of the Center Block. Sew (1) 3 1/2" x 46" Fabric J strip to the top and to the bottom of the Center Block to make the quilt top.

20. Layer and quilt as desired.

21. Sew the (5) 2 1/2" x WOF Fabric F strips together, end to end with 45-degree seams, to make the binding. Fold this long strip in half lengthwise with wrong sides together and press.

22. Bind as desired.



Quilt Layout

Every effort has been made to ensure that all projects are error free. All the information is presented in good faith, however no warranty can be given nor results guaranteed as we have no control over the execution of instructions. Therefore, we assume no responsibility for the use of this information or damages that may occur as a result. When errors are brought to our attention, we make every effort to correct and post a revision as soon as possible. Please make sure to check [www.henryglassfabrics.com](http://www.henryglassfabrics.com) for pattern updates prior to starting the project. We also recommend that you test the project prior to cutting for kits. Finally, all free projects are intended to remain free to you and are not for resale.