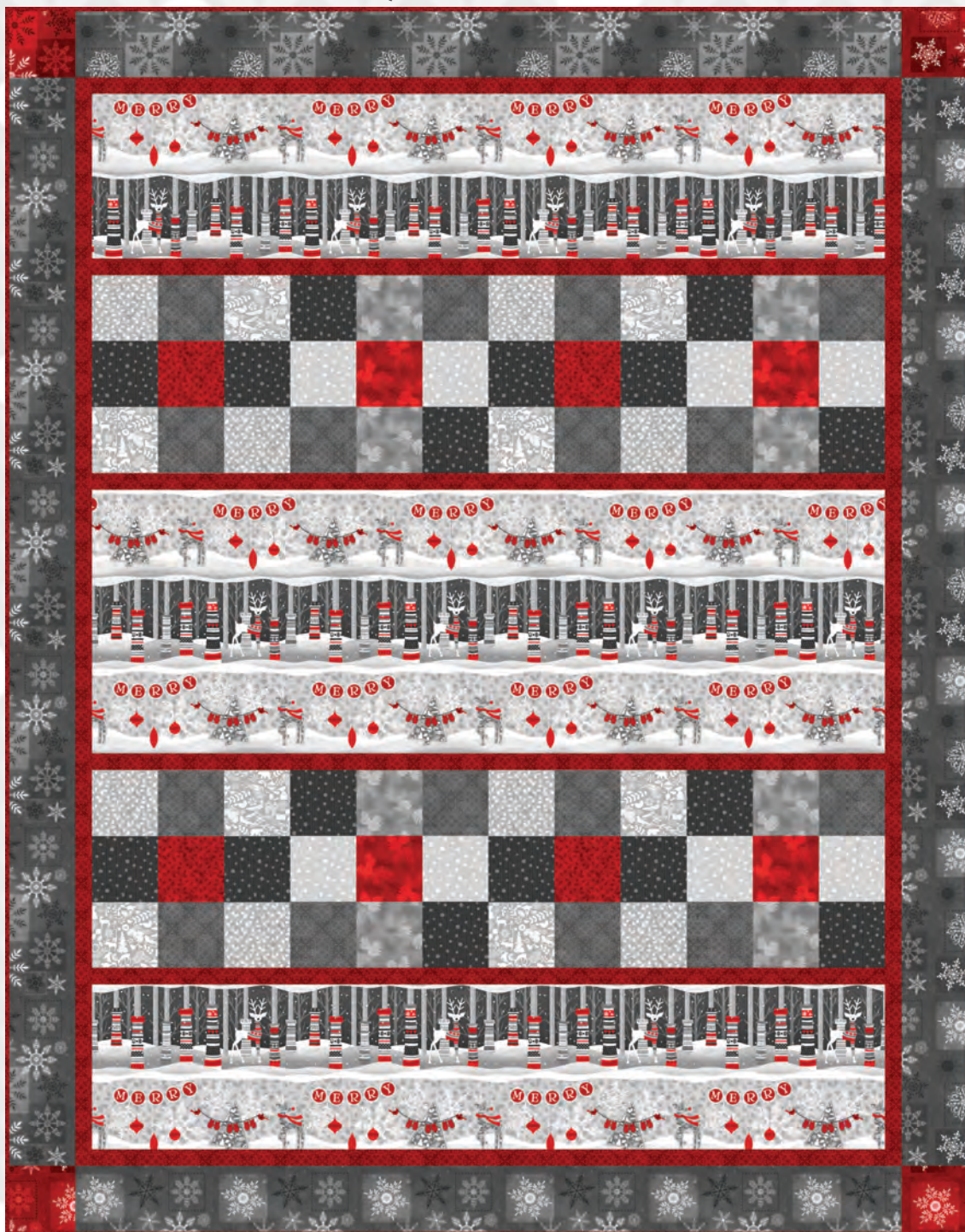


# Holiday Magic

By Jan Shade Beach

Pieced



A Free Project Sheet From



Henry Glass & Co., Inc.



facebook

Finished Quilt Size: 58" x 74"  
49 West 37th Street, New York, NY 10018  
tel: 212-686-5194 fax: 212-532-3525  
Toll Free: 800-294-9495  
[www.henryglassfabrics.com](http://www.henryglassfabrics.com)

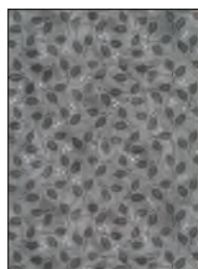


# HOLIDAY MAGIC

Finished Quilt Size: 58" x 74"

Pieced

## Fabrics in the Collection



Holly Leaves  
Dk. Grey 9804-99



Holly Leaves  
Lt. Grey 9804-90



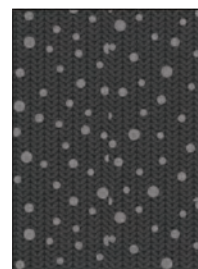
Holly Leaves  
Red 9804-88



Large Snowflakes  
Grey 9803-99



Large Snowflakes  
Red 9803-88



Knit Texture w/Snow  
Dk. Grey 9802-99



Knit Texture w/Snow  
Lt. Grey 9802-90



Tonal Pinecones  
Grey 9800-99



Tonal Pinecones  
Red 9800-88



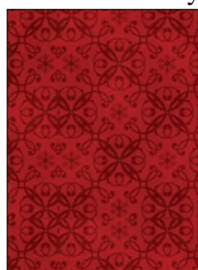
Winter Motifs  
Grey 9799-99



Winter Motifs  
Red 9799-88



Damask - Grey  
9798-99



Damask - Red  
9798-88



Damask - White  
9798-01



Stripe - Grey  
9801-99



Stocking Panel - Lt. Grey  
9805P-90



Blocks Panel - White/Grey  
9797P-09

### Materials

1 ½ yards	Stripe – Grey	9801-99
¼ yard	Holly Leaves – Lt. Grey	9804-90
⅜ yard	Damask – Grey	9798-99
⅜ yard	Knit Texture w/Snow – Dk. Grey	9802-99
¼ yard	Holly Leaves – Red	9804-88
¼ yard	Winter Motifs – Grey	9799-99
¼ yard	Knit Texture w/Snow – Lt. Grey	9802-90
¼ yard	Tonal Pinecones – Grey	9800-99
1 ⅛ yards	Damask – Red	9798-88
1 yard	Large Snowflakes – Grey	9803-99
¼ yard	Large Snowflakes – Red	9803-88
¼ yard	Tonal Pinecones – Red	9800-88
3 ¾ yards	Winter Motifs – Red (Backing)	9799-88

### Cutting Instructions

*Please note: all strips are cut across the width of fabric (WOF) from selvage to selvage edge unless otherwise noted.*

#### From the Stripe - Grey (A), cut:

- (2) 10 ½" x 48 ½" strips from the length of fabric (LOF).
- (1) 16 ½" x 48 ½" LOF strip.

#### From the Holly Leaves - Lt. Grey (B), cut:

- (1) 4 ½" x width of fabric (WOF) strip. Sub-cut strip into (8) 4 ½" squares.

#### From the Damask - Grey (C), cut:

- (2) 4 ½" x WOF strips. Sub-cut strips into (16) 4 ½" squares.

#### From the Knit Texture w/Snow - Dk. Grey (D), cut:

- (2) 4 ½" x WOF strips. Sub-cut strips into (16) 4 ½" squares.

#### From the Holly Leaves - Red (E), cut:

- (1) 4 ½" x WOF strip. Sub-cut strip into (4) 4 ½" squares.

#### From the Winter Motifs - Grey (F), cut:

- (1) 4 ½" x WOF strip. Sub-cut strip into (8) 4 ½" squares.

#### From the Knit Texture w/Snow - Lt. Grey (G), cut:

- (1) 4 ½" x WOF strip. Sub-cut strip into (8) 4 ½" squares.

#### From the Tonal Pinecones - Grey (H), cut:

- (1) 4 ½" x WOF strip. Sub-cut strip into (8) 4 ½" squares.

#### From the Damask - Red (I), cut:

- (8) 1 ½" x WOF strips. Sew strips together, end to end with diagonal seams, and cut (6) 1 ½" x 48 ½" strips.
- (4) 1 ½" x WOF strips. Sew strips together, end to end with diagonal seams, and cut (2) 1 ½" x 66 ½" strips.
- (7) 2 ½" x WOF strips for the binding.

#### From the Large Snowflakes - Grey (J), cut:

- (4) 4 ½" x WOF strips. Sew strips together, end to end with diagonal seams, and cut (2) 4 ½" x 66 ½" strips.
- (3) 4 ½" x WOF strips. Sew strips together, end to end with diagonal seams, and cut (2) 4 ½" x 50 ½" strips.

#### From the Large Snowflakes - Red (K), cut:

- (1) 4 ½" x WOF strip. Sub-cut strip into (4) 4 ½" squares.

#### From the Tonal Pinecones - Red (L), cut:

- (1) 4 ½" x WOF strip. Sub-cut strip into (4) 4 ½" squares.

#### From the Winter Motifs - Red (Backing), cut:

- (2) 66" x WOF strips for the backing. Sew the strips together and trim to make the 66" x 82" back.

#### Sewing Instructions

1. Follow Figure 1 and sew (2) 4 ½" Fabric B squares, (2) 4 ½" Fabric C squares, (2) 4 ½" Fabric D squares, (2) 4 ½" Fabric F squares and (1) 4 ½" Fabric E square together to make (1) Block One. Repeat to make (4) Block Ones total.

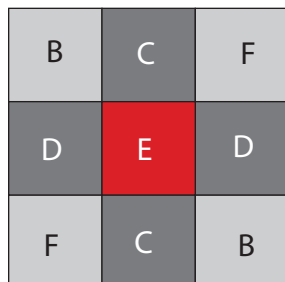


Fig. 1 make 4

2. Follow Figure 2 and sew (2) 4 ½" Fabric D squares, (2) 4 ½" Fabric G squares, (2) 4 ½" Fabric H squares, (2) 4 ½" Fabric C squares and (1) 4 ½" Fabric L square together to make (1) Block Two. Repeat to make (4) Block Twos total.

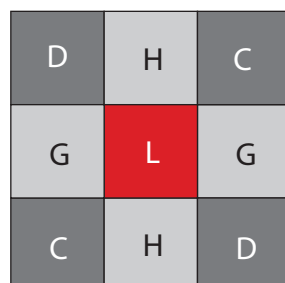


Fig. 2 make 4

#### Quilt Top Assembly

(Refer to the *Quilt Photo* while assembling.)

3. Sew (2) Block Ones and (2) Block Twos together, alternating them, to make (1) pieced row. Repeat to make a second pieced row.

4. Sew (6) 1 ½" x 48 ½" Fabric I strips, (2) 10 ½" x 48 ½" Fabric A strips, (2) pieced rows and (1) 16 ½" x 48 ½" Fabric A strip together to make the quilt top.

5. Sew (1) 1 ½" x 66 ½" Fabric I strip to each side of the quilt top.

6. Sew (1) 4 ½" x 66 ½" Fabric J strip to each side of the quilt top. Sew (1) 4 ½" Fabric K square to each end of (1) 4 ½" x 50 ½" Fabric J strip. Repeat to make a second strip. Sew the strips to the top and to the bottom of the quilt top.

7. Layer and quilt as desired.

8. Sew the (7) 2 ½" x WOF Fabric I strips together, end to end with 45-degree seams, to make the binding. Fold this long strip in half lengthwise with wrong sides together and press.

9. Bind as desired.