

moda



"The Bear"

BIG SKY



Annie Brady

Finished Size: 59½" x 70"



# BIG SKY

Annie Brady



Finished Size: 59½" x 70"

## Quilters Basics

*Read instructions before beginning a project.*

*All instructions include a ¼" seam allowance.*

*Press as you go. Press seams in one direction.*

*22" measurement is approximate.*

*WOF = Width of Fabric*

## Cutting

*NOTE: This quilt has many pieces. For ease of piecing and best results it is important to label and sort pieces as they are cut.*



### Fabric A

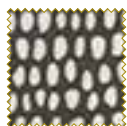
Cut 1 – 4¾" x 21" strip.

Sub-cut 1 – 4¾" square **and** 3 – 4" squares.

Cut the 4¾" square twice diagonally to make 4 small triangles.

Cut 2 – 4⅜" x 21" strips.

From the strips cut 6 – 4⅜" squares.



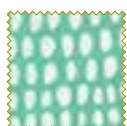
### Fabric B

Cut 1 – 8" x 21" strip.

Sub-cut 2 – 7½" x 4" rectangles, 2 – 4" squares and 2 – 2¼" squares.

Cut 1 – 4" x 21" strip. Sub-cut 2 – 4" squares.

From the remainder of the FQ cut 1 each of Templates 1 and 3.



### Fabric C

Cut 1 – 4¾" x 21" strip.

Sub-cut 1 – 4¾" square, 2 – 4⅜" squares and 2 – 2¼" squares.

Cut the 4¾" square twice diagonally to make 4 small triangles. *You will only use 1 triangle.*

Cut 2 – 4" x 21" strips.

Sub-cut 10 – 4" squares.



### Fabric D

Cut 1 – 7½" x 21" strip.

Sub-cut 2 – 7½" squares and 1 – 4⅜" square.



### Fabric E

Cut 1 – 4¾" x WOF strip.

Sub-cut 1 – 4¾" square and 4 – 4" squares.

Cut the 4¾" square twice diagonally to make 4 small triangles. *You will only use 1 triangle.*

Cut 1 – 4⅜" x WOF strips.

Sub-cut 6 – 4⅜" squares. From the remainder cut 2 – 4⅜" squares cut once diagonally to make 4 large triangles. *You will only use 3 triangles.*

Cut 3 – 4" x WOF strips.

Sub-cut 1 – 4" x 11" strip and 6 – 4" x 7½" strips and 9 – 4" squares.



### Fabric F

Cut 1 – 4¾" x 21" strip.

Sub-cut 1 – 4¾" square and 2 – 4" square.

Cut the 4¾" square twice diagonally to make 4 small triangles.

Cut 2 – 4⅜" x 21" strips.

From the strips cut 8 – 4⅜" squares.



### Fabric G

Cut 1 – 7½" x WOF strip.

Sub-cut 2 – 2¼" x 7½" strips, 4 – 2¼" x 5¾" strips and 2 – 2¼" x 4" strips and 1 – 4⅜" square.

Cut 7 – 2½" x WOF strips for the binding.



### Fabric H

Cut 7 – 7½" x WOF strips.

Sub-cut 26 – 7½" squares and 8 – 4" x 7½" strips.

Cut 1 – 5¾" x WOF strip.

Sub-cut 2 – 5¾" x 7½" strips and 3 – 4⅜" squares.

Cut 3 – 4" x WOF strips.

Sub-cut 21 – 4" squares.



### Fabric I

Cut 1 – 8" x WOF strip.

Sub-cut 2 – 5¾" x 7½" strips and 1 – 4⅜" square

From the remainder of the strip cut 1 Template 2.

Cut 10 – 4" x WOF strips.

Sub-cut 45 – 4" x 7½" strips and 9 – 4" squares.



### Fabric J

Cut 1 – 7½" x 21" strip. Sub-cut 2 – 7½" squares.

Cut 1 – 4" x 21" strip. Sub-cut 4 – 4" squares.



### Fabric K

Cut 1 – 4" x 18" strip (length of FQ).

Sub-cut 2 – 7½" x 4" rectangles.

Cut 2 – 4" x 17" strips. (width of FQ)

Sub-cut 2 – 4" x 7½" rectangles and 4 – 4" squares.

Cut 1 – 4⅜" x 17" strip.

Sub-cut 1 – 4⅜" square. Cut the 4⅜" square **once** diagonally to make 2 large triangles.

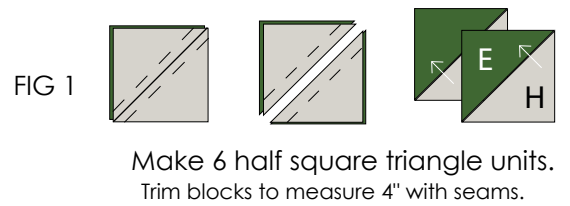


### Fabric L

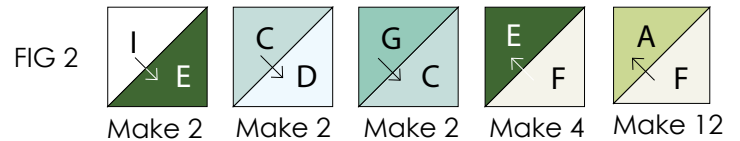
Cut 2 – 1½" circles for eyes.

# Construct the Units

- Using a mechanical pencil draw a diagonal line on the wrong sides of 3–Fabric H  $4\frac{3}{8}$ " squares. With right sides together place 1 marked Fabric H square on top of 1 –  $4\frac{3}{8}$ " Fabric E square. Stitch  $\frac{1}{4}$ " away from each side of the drawn diagonal line. Cut the two squares apart on the marked line to make two half-square triangles (HST). Press toward arrows. The units should measure 4" with seams. Repeat to make six E/H HST units total (Fig. 1).



- Repeat Step 1 to make the half square triangle units as shown on right. Press toward the arrows. Refer to Figure 2.



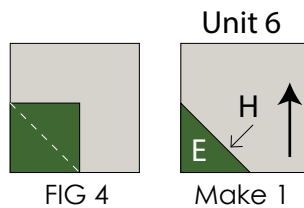
## 3-Triangle Units

Sew together 1 – Fabric E small triangle and 1 – Fabric C small triangle. Press seam toward arrow. Add 1 – Fabric E large triangle to bottom of sewn triangles to make Unit 1. Press seam toward arrow. Refer to Figure 3 for fabric placement and repeat to make one each of Unit 2, Unit 3, Unit 4 and Unit 5.

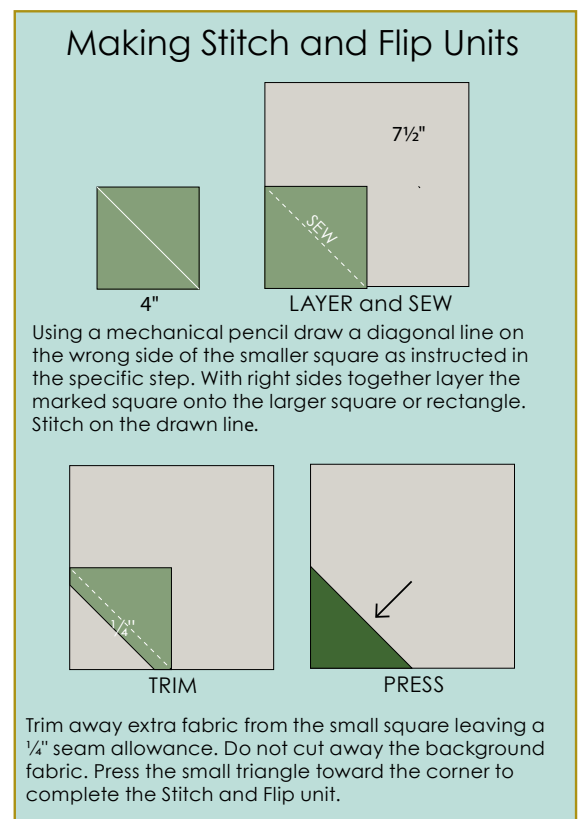
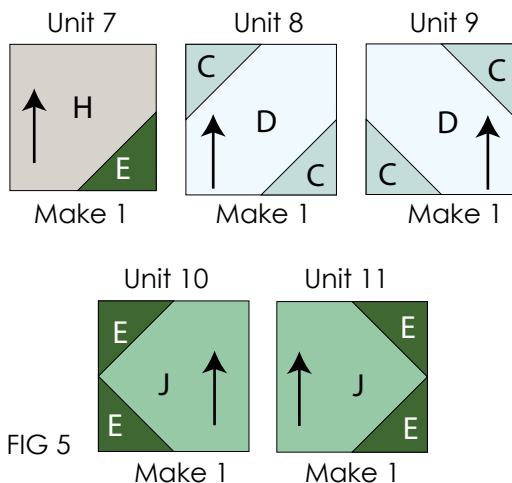


## 4 Stitch and Flip Units

Using a mechanical pencil draw a diagonal line on the wrong side of 1–Fabric E 4" square. With right sides together place the marked Fabric E square on the lower left corner of the  $7\frac{1}{2}$ " Fabric H square. Stitch on marked line. Flip open the triangle formed and press (Fig. 4). Trim away the extra fabric from behind the triangle, leaving a  $\frac{1}{4}$ " seam allowance to make 1 – Unit 6.



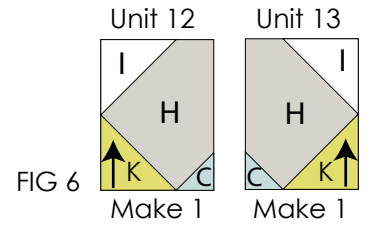
- Repeat Step 4 and follow Figure 5 for fabric placement and seam direction to make Units 7-11 using assorted  $7\frac{1}{2}$ " squares and assorted 4" squares.



moda

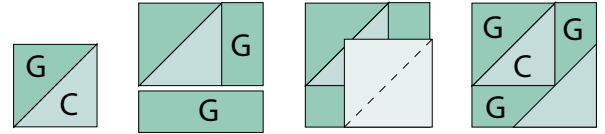
# Construct the Units (cont.)

- 6 Using the Stitch and Flip method, refer to Figure 6 for placement and seam direction to sew 1 – 4" Fabric I square, 1 – 4" Fabric K square and 1 – 2 1/4" Fabric C square to the 5 3/4" x 7 1/2" Fabric H rectangle to make Unit 12. Repeat to make Unit 13, reversing the placement of the squares as shown. See Figure 6.



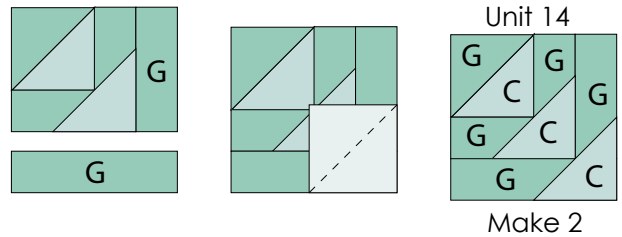
- 7 Sew 1 – 2 1/4" x 4" Fabric G strip to the right side of 1 – G/C HST unit (from Step 2). Add a 2 1/4" x 5 3/4" Fabric G strip to the bottom of the sewn unit. Then use the Stitch and Flip method to add a 4" Fabric C square to the lower right corner of unit. See (Figure 7).

FIG 7



- 8 Sew a 2 1/4" x 5 3/4" Fabric G strip to the right side of the unit from Step 7. Add a 2 1/4" x 7 1/2" Fabric G strip to the bottom of the unit. Use the Sew and Flip method to add 1 – 4" Fabric C square to the lower right corner to complete Unit 14 square (Fig. 8). Repeat steps 7 and 8 to make a second Unit 14 square.

FIG 8

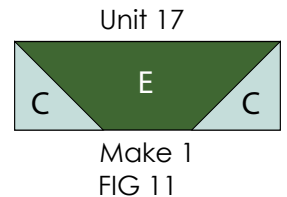
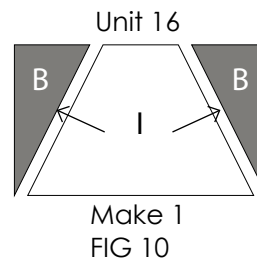
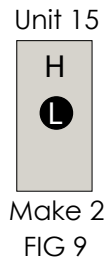


*moda*

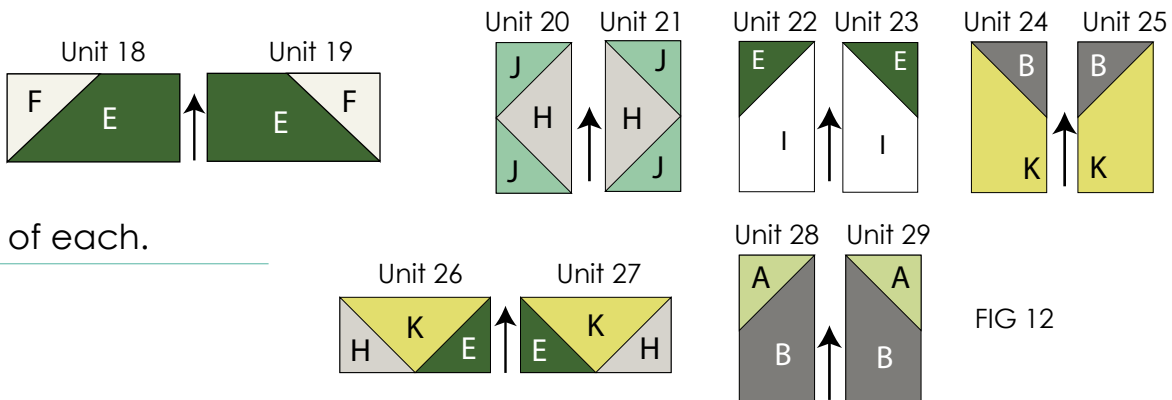
- 9 Using your favorite appliqué method, center a 1 1/2" dark circle (Fabric L) on a 4" x 7 1/2" Fabric H rectangle. Appliqué in place to make Unit 15 (Fig. 9). Repeat to make a second Unit 15.

- 10 Sew Fabric B-Template 1 triangle to the left side of the Fabric I-Template 2 piece press toward arrow. Then add Fabric B-Template 3 triangle to the right side of the Template 2 piece to make a 7 1/2" x 11" Unit 16 (Fig. 10).

- 11 Use the Stitch and Flip method and follow Figure 11 to make Unit 17 using 1 – 4" x 11" Fabric E rectangle and 2 – 4" Fabric C squares.

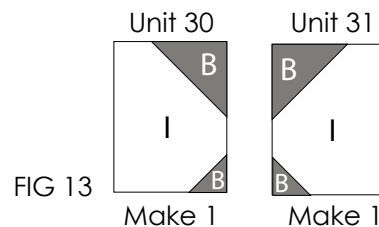


- 12 Use the Stitch and Flip method and follow Figure 12 to make Units 18-29 using the assorted 4" x 7 1/2" rectangles and assorted 4" squares as shown.



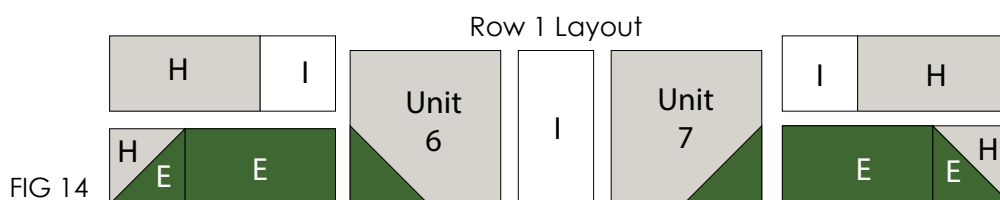
Construct the Units (cont.)\_\_\_\_\_

- 13** Use the Stitch and Flip method to make Units 30 and 31 using a  $5\frac{3}{4}$ " x  $7\frac{1}{2}$ " Fabric I rectangles, a 4" Fabric B squares and a  $2\frac{1}{4}$ " Fabric B squares.

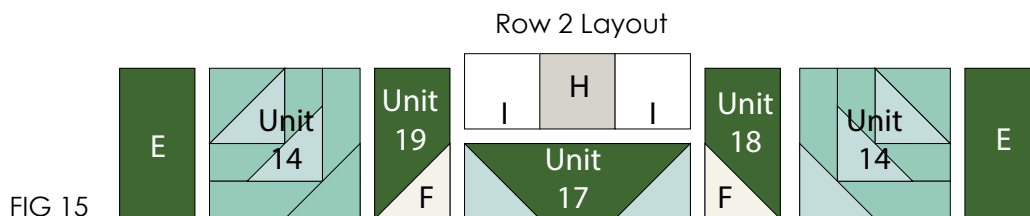


Build the Bear\_\_\_\_\_

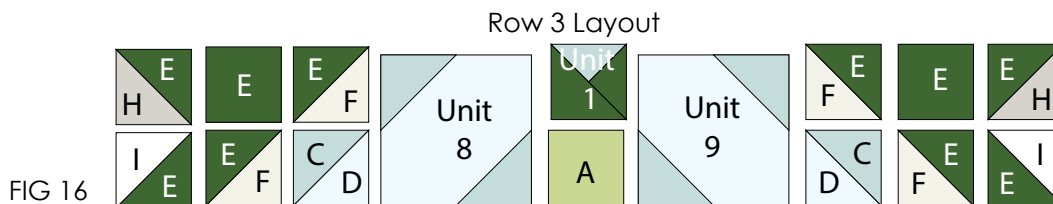
- 1 Row One.** Follow Figure 14 to sew together 1- Unit 6 square, 1-Unit 7 square, 2 - H/E HST units, 2 - 4" x 7½" Fabric E strips, 2- 4" x 7½" Fabric H rectangles, 1- 4" x 7½" Fabric I rectangle and 2- 4" Fabric I squares as shown to make Row 1.



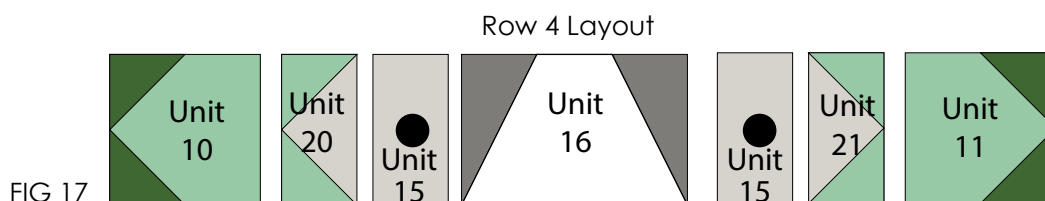
- 2 Row Two.** Follow Figure 15 to sew together 2 – Unit 14 squares, 1 – Unit 17 rectangle, 1 – Unit 18 square, 1 – Unit 19 square, 2 – 4" x 7½" Fabric E rectangles, 1 – 4" Fabric H square and 2 – 4" Fabric I squares as shown to make Row 2.



- 3 Row Three.** Follow Figure 16 to sew together 1 – Unit 1 square, 1 – Unit 8 square, 1 – Unit 9 square, 2 – C/D HST units, 4 – E/F HST units, 2 – E/H HST units, 2 – I/E HST units, 2 – 4" Fabric E squares and 1 – Fabric A square as shown to make Row 3.

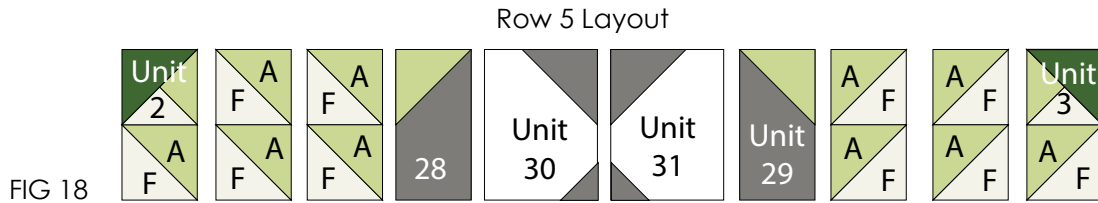


- 4 Row Four.** Follow Figure 17 to sew together 1 – Unit 10 square, 1 – Unit 11 square, 2 – Unit 15 rectangles, 1 – Unit 16 rectangle, 1 – Unit 20 rectangle and 1 – Unit 21 rectangle as shown to make Row 4.

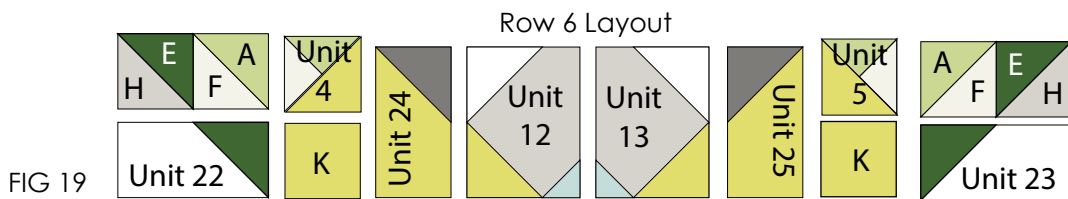


## Build the Bear (cont.)

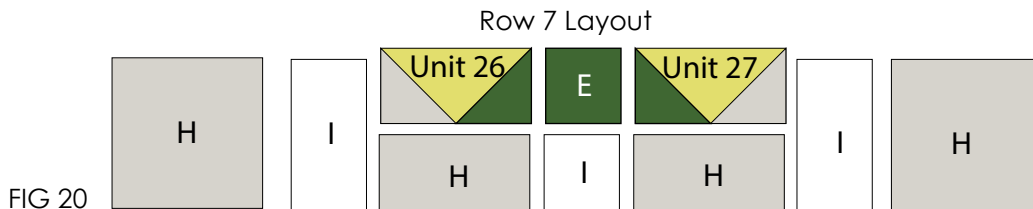
- 5 **Row Five.** Follow Figure 18 to sew together 1 – Unit 2, 1 – Unit 3, 1 – Unit 28 rectangle, 1 – Unit 29 rectangle, 1 – Unit 30 rectangle, 1 – Unit 31 rectangle and 10 – A/F HST square as shown to make Row 5.



- 6 **Row Six.** Follow Figure 19 to sew together 1 – Unit 4 square, 1 – Unit 5 square, 1 – Unit 12 rectangle, 1 – Unit 13 rectangle, 1 – Unit 22 strip, 1 – Unit 23 strip, 1 – Unit 24 strip, 1 – Unit 25 strip, 2 – A/F HST units, 2 – E/H HST units and 2 – 4" K squares as shown to make Row 6.



- 7 **Row Seven.** Follow Figure 20 to sew together 1 – Unit 26 rectangle, 1 – Unit 27 rectangle, 2 – 7½" Fabric H squares, 2 – 4" x 7½" Fabric H rectangles, 2 – 4" x 7½" Fabric I rectangles, 1 – 4" Fabric I square and 1 – 4" Fabric E square to as shown make Row 7.



## Assemble the Quilt

*NOTE: Refer to the Quilt Layout while assembling.*

- 1 Join the seven rows together to make the Bear Center. Press seams open.

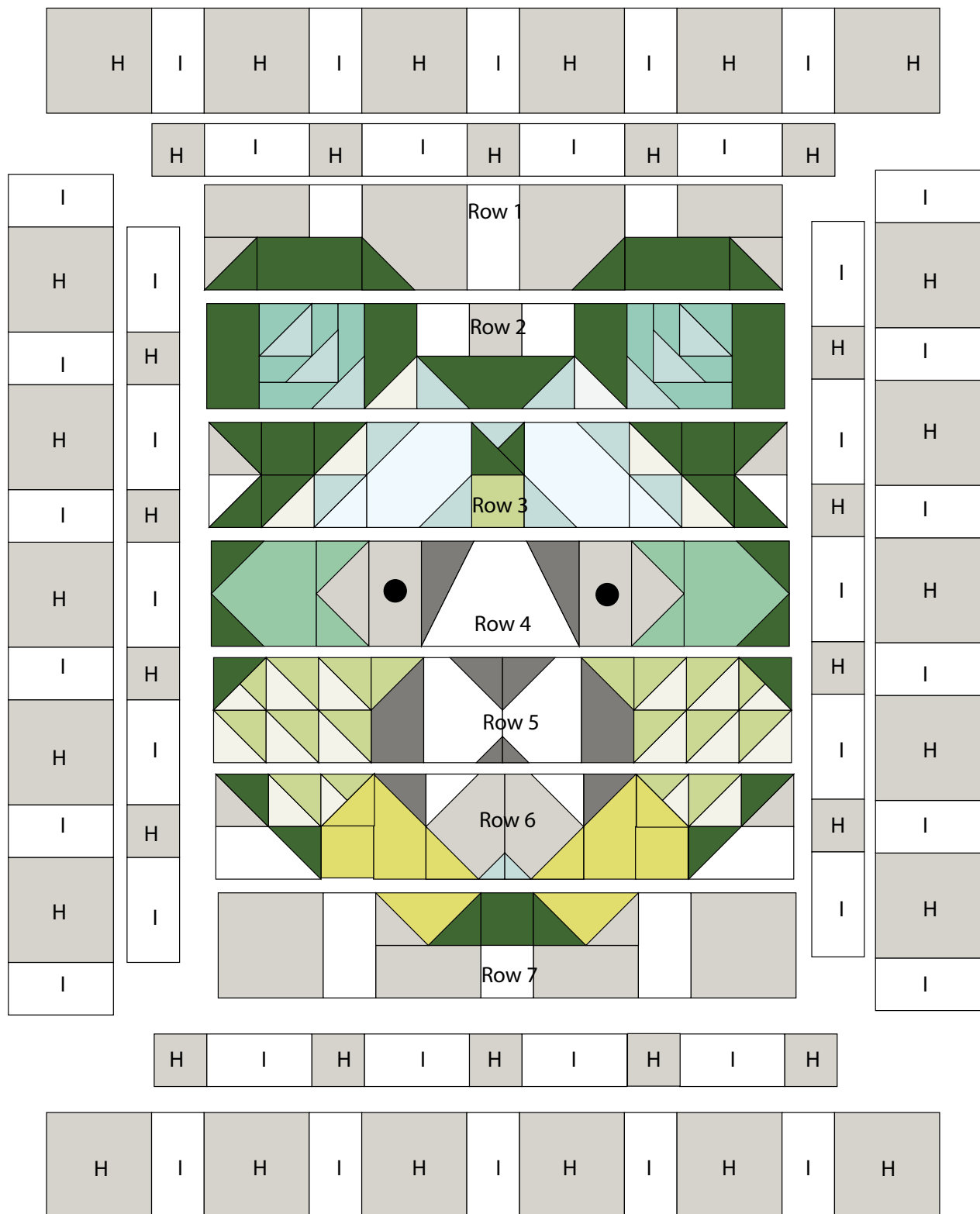
### Inner Border

- 2 Stitch together 5 – 4" x 7½" Fabric I rectangles and 4 – 4" Fabric H squares, alternating them to make one side border. Repeat to make a second side border. Sew the borders to opposite sides of the Bear Center. Press seams toward dark.
- 3 Sew together 5 – 4" Fabric H squares and 4 – 4" x 7½" Fabric I rectangles, alternating them to make the top row. Repeat to make the bottom row. Sew the rows to the top and bottom of the Bear Center. Press seams toward dark.

### Outer Border

- 4 Sew together 6 – 4" x 7½" Fabric I rectangles and 5 – 7½" Fabric H squares, alternating them to make one side border. Repeat to make a second side border. Stitch the borders to opposite sides of the inner border. Press seams toward dark.
- 5 Sew together 6 – 7½" Fabric H squares and 5 – 4" x 7½" Fabric I rectangles, alternating them to make the top row. Repeat to make the bottom row. Stitch the borders to the top and bottom of the inner border. Press seams toward dark.

## Quilt Layout



## Finishing

Using a diagonal seam, join the 7 – 2½"xWOF Fabric G strips end to end. Press seams open. Fold prepared strip in half wrong sides together and press to make the binding.

Layer, Quilt and Bind.

# BIG SKY



Annie Brady

Templates are 100%  
Cut 1 of each

*moda*

Template 2

Place on Fold



moda

Eye Template  
Trace 2  
Fabric L

Template 1

Template 3

BIG SKY



Ernie Brady

Templates are 100%  
Cut 1 of each

# BIG SKY



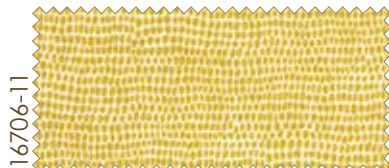
Annie Brady

Finished Size: 59½" x 70"

## Fabric Requirements

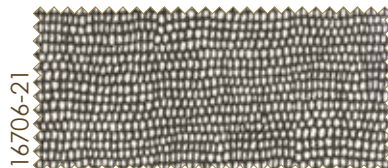
Fabric A

FQ



Fabric B

FQ



Fabric C

FQ



Fabric D

FQ



Fabric E

¾ yd.



Fabric F

FQ



Fabric G

¾ yd.



Fabric H

2⅞ yds.



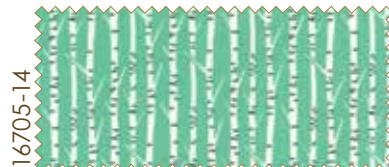
Fabric I

1½ yds.



Fabric J

FQ



Fabric K

FQ



Fabric L

F8



Backing

4¼ yds



MODAFABRICS.COM

PS16700 — SUGGESTED RETAIL \$10.00