



Conservation E-News

Cost Share Sign-up

Have you been thinking about making improvements to your land? What is stopping you from proceeding? The Conservation District is here to help you! The State Cost Share Program is available to anyone owning land in Greenwood County. The initial application period is July-Aug. 15. Funding is provided by the Division of Conservation, Kansas Department of Agriculture through appropriations from the Kansas Water Plan Fund. Those interested in applying are encouraged to contact the District office. If all funds are not committed in the initial application process, applications will continue to be taken until all funds are committed to a project.

Fall River & Toronto WRAPS Update

Watershed Restoration and Protection Strategy

The Watershed Restoration and Protection Strategy (WRAPS) offers financial assistance to help producers address water quality and soil erosion concerns on their farms and ranches. Both Fall River and Toronto WRAPS have similar goals—reduce sedimentation and nutrient load in these two federal reservoirs.

In 2015 and 2016, over \$48,000 was expended in these two watersheds to assist landowners with projects. Completed projects include: fencing ponds and adding alternative livestock water sources, repairing gully erosion that was a result of salt water contamination or historic oil production, assisting with cover crop implementation, and construction of terraces and waterways. Other common Best Management Practices that are eligible for financial assistance include:

Continued on page 2



What species of grass
is pictured above?
Read more, pg. 3

Inside this issue

Calendar of Events	2
Water Festival	2
Old World Bluestem	3
FSA Deadline	4
NAP w/FSA agency	4
Pest Control	4
Target Area Map	5
Information & Education	6

Answer to question above:

Old World Bluestem -Caucasian



Calendar of Events

July 29-August 1st County Fair

August 9- CD Board Meeting

August 15-Area Schools begin classes

August 24- Farm Bureau Annual Meeting

September 5- Labor Day, closed

September 6- Day on the Farm

September 9- State Fair begins

September 13- CD Board Meeting

October 5- Otter Creek Watershed District Meeting 7pm

October 10- Columbus Day, closed

October 11- CD Board Meeting

October 18- Fall River Watershed District Meeting 7:30pm

October 27- Walnut West Watershed District Meeting 7:30pm

October 29th-Nov. 5- King of Prairie Contest held during Cattleman's day

November 5- Cattleman's Day
Celebration in Eureka

November 8- CD Board Meeting

November 11- Veteran's day, closed

November 15- America Recycle Day

November 21-22- KACD Convention

November 24-Thanksgiving, closed

December 13- CD Board Meeting

December 25- Christmas, Closed 26th

2016 Water Festival

The Annual Water Festival was held this past spring on April 27 at the Eureka City Park. The area schools that attended were Madison, Hamilton and Eureka's 4th grade classes. The educational games consisting of the long haul, water Olympics and more gave the kids a fun way to learn the importance of our water. The kids each received a reusable water bottle and small incen-

tive prizes. This would not have been possible without the help of volunteers: Sheila Hughes, Bob Culbertson, Herschel George, FSA Agency technicians, Woodson & Wilson County Conservation Districts, and the KDWP & Tourism area biologist, Vickie Cikanek. Once again it was a very successful educational program.

WRAPS Update Cont.

- Establishing buffers of permanent vegetation on cropland
- Relocating livestock feeding sites away from streams
- Creating alternative water sources for livestock and fencing streams
- Implementing cover crops and no-till
- Other common practices that reduce soil erosion

There are available funds to assist landowners at this time. If you have land in Fall River or Toronto Watershed, WRAPS may be able to help you improve the efficiency of your operation while improving water quality.

Below are the steps to WRAPS financial assistance:

1. Contact project coordinator, local NRCS personnel, conservation district, or local Kansas State University extension personnel. Describe and discuss project and location. Schedule project site visit.
2. Project coordinator, in cooperation with NRCS, will estimate project cost based on county wide average costs.
3. Greenwood County WRAPS stakeholders (board of local individuals) vote to approve project.
4. Sign project contract with Kansas Alliance for Wetlands and Streams Inc. to complete the project in one year (weather conditions will be considered).
5. Provide receipts to project coordinator and receive reimbursement in around 10 days.

The map found on page 0 of this newsletter shows the Priority Areas within each watershed. These areas represent the portion of the watershed that is contributing the most sediment and where projects can have the most benefit. It is within these Priority Areas that WRAPS funds are targeted.

Kansas Alliance for Wetlands and Streams (KAWS) is a private non-profit company dedicated to education and implementing projects that ensure the future of wetlands, streams, and their adjacent riparian areas as an integral part of our Kansas heritage and landscape. This project has been funded through the Section 319 of the Clean Water Act.



The roots are showing on plant where erosion has taken place.

Old World Bluestem, Caucasian & Yellow

- Caucasian Bluestem – *Bothriochloa bladhii*
 - Native to subtropical Asia and Africa. brought to US in early 1900's for forage production and erosion control.
- Yellow Bluestem – *Bothriochloa ischaemum*
 - Native to Southern Europe and Asia.
- Both were Brought to US in early 1900's for forage production and erosion control, now scattered throughout the Southern and Central Great Plains.
- Locally, Caucasian Bluestem is more common than Yellow Bluestem.

Identification:

•*Caucasian Bluestem*

- Warm season, perennial bunch grass.
- Grows 2-3 feet tall.
- Thin, tapered yellowish-green leaves.
- Long hairs around base of leaf blade and on lower leaf.
- Flowers late June to early July with reddish-purple seed head.

•*Yellow Bluestem*

- Similar to Caucasian Bluestem but often taller, up to 3-4 tall.
- Long hairs on leaves often extend further up the blade.
- Flowers late June to early July with reddish-purple seed head.

The best way to distinguish between Caucasian and Yellow Bluestem is the seed head.

Why is it a problem? It readily invades disturbed areas such as road ditches and over grazed range and pasture. Once established it can easily move from disturbed areas into native range. Cattle will avoid grazing it. Forage quality is lower than native grasses. Another major concern is erosion can occur between plants.

Control Options

The current recommended treatment for Old World Bluestem is below.

Broadcast Treatment:

.25lb/Ac imazapyr applied mid June.

Spot Spraying:

.25lb/Ac imazapyr or 1-1.5% glyphosate applied mid June

Both treatments will negatively impact native warm season grasses, however, they are more tolerant to imazapyr.

Burning or mowing the area prior to application will improve control.

District Services

Rent a Root plow\$20/day

Geotextile Fabric

Seed Dealer

State Cost Share Programs

greenwoodcounty.org

Find us on Facebook!

Soil Health Workshop

August 23, 2016

Fall River & Toronto WRAPS will pay the registration fee (up to 10 participants) for this workshop for producers in the two watersheds, so be sure and pass this along or take advantage. Below is a link for more inform. Contact Bob.

<http://www.notill.org/events/soil-health-workshop>

Deadline Is Approaching, Farm Service Agency

It is now time to make an appointment with the Eureka Farm Service Agency. The process of certifying grasses for the Program Year 2017 has begun.

Deadline is NOVEMBER 15, 2016.

Please call to set-up an appointment today by calling the office at 620-583-5544.



MAKE AN APPOINTMENT TODAY!

Noninsured Crop Disaster Assistance Program

The Noninsured Crop Disaster Assistance Program (NAP) administered by the USDA Farm Service Agency, provides financial assistance to producers of non-insurable crops to protect against natural disasters that result in lower yields or crop losses, or prevents crop planting. Eligible crops must be commercially produced agricultural commodities for which crop insurance is not available. Eligible causes of loss include the following natural disasters. The natural disaster must occur during the coverage period, before or during harvest, and must directly affect the eligible crop. For general information on NAP including eligible crops, view: www.fsa.usda.gov/nap

Kansas Dept. of Agriculture, Pest Watch List

Yes, Kansas has a list of pest! There are six currently on the list. Gypsy Moth, Red Imported Fire Ant, Kharpra Beetle, Granulate Ambrosia Beetle, Emerald Ash Borer and the Asian Longhorn Beetle. The Plant Protection and Weed Control agency ask to be notified if you have seen any of these pest. If you suspect you have found any of these, steps are listed to below how to submit your findings. Please look at the Ks Dept. of Ag's website to see photos of the individual insects. <http://agriculture.ks.gov>. Search pest watch list.

Kansas Alliance for Wetlands and Streams

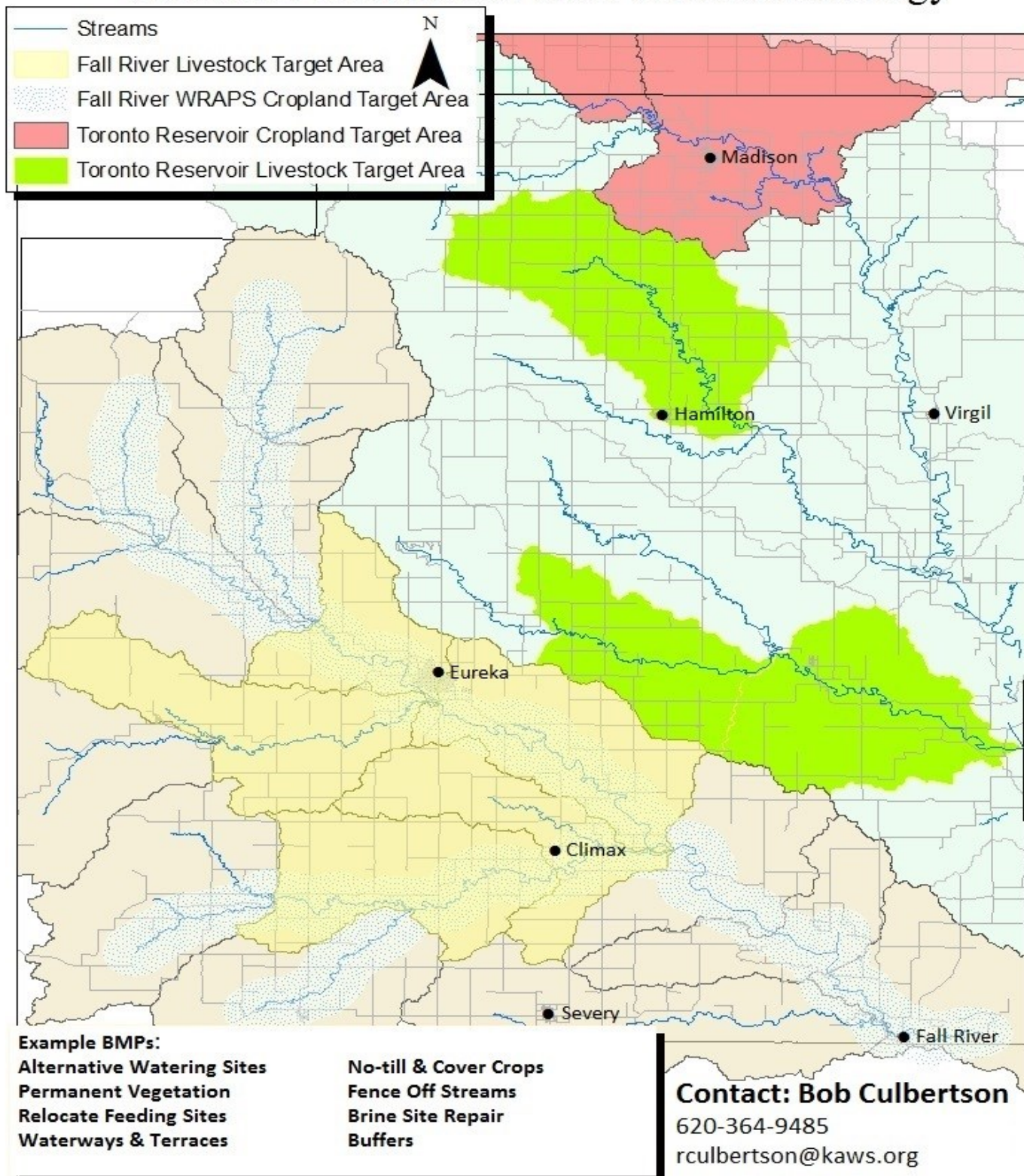


www.kaws.org

Bob Culbertson
WRAPS & Wetland Coordinator

207 Cheyenne Street
New Strawn, KS 66839
620-364-9485
rculbertson@kaws.org

Toronto Reservoir and Fall River Reservoir WRAPS Watershed Restoration and Protection Strategy



Earth Balloon Was In Greenwood County

Ever been inside of the world? Probably not. But this past spring during the month of May, Greenwood County children experienced being inside the earth balloon. The balloon was purchased by donations from 37 county districts, Marais des Cygnes Drainage District, Pomona WRAPS group, KACD Ed & Youth Committee, Flint Hills RC&D and



NRCS. During the education events held for the Hamilton, Madison and Eureka students, many topics were discussed, including Geography! The kids enjoyed learning about

many conservation practices that are used around world as well as the different climates. The balloon stands 18' tall and 22' around at the equator. The District had help presenting from Lyon County Conservation, Wilson County Conservation, Ks Dept. of Wildlife & Parks as well as the local NRCS staff.

The District plans to make this a annual event for students attending school in Greenwood County.

Tour In Greenwood County

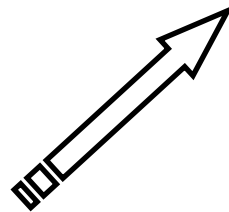
EROSION CONTROL AND GRASS MANAGEMENT TOUR

Tuesday, September 20, 2016

3:30-7:30 PM

Mike Collinge Ranch

1834 230th Street, Hamilton



RSVP by September 15.

620-583-6461

ACTIVITIES AT TOUR

Gravity Fed Livestock Watering
Systems – Pipes and Tanks
Rock Chutes to Reduce Gully Erosion
Management of “Go Back” Sites to
Reduce Erosion and Improve
Grass Condition
Brush Management in Rangeland Sites
Sericea Lespedeza Control Methods
Enjoy a Wagon Ride Through the
Beautiful Grassland Hills
Free Catered Dinner by the
Red Brick Café of Madison!

***The tour would not be possible
without these sponsors:***

Mike & Pam Collinge, Collinge Ranch

Fall River & Toronto Watershed
Restoration & Protection
WRAPS

Greenwood County Conservation Dist.

Natural Resource Conservation Service

Kansas State Research & Extension

RSVP

By September 15, 2016

Keila Sherman

At Eureka USDA Office

620-583-6461 Ext. 331

Keila.sherman@ks.nacdn.net

gwcokansasconservation@gmail.com