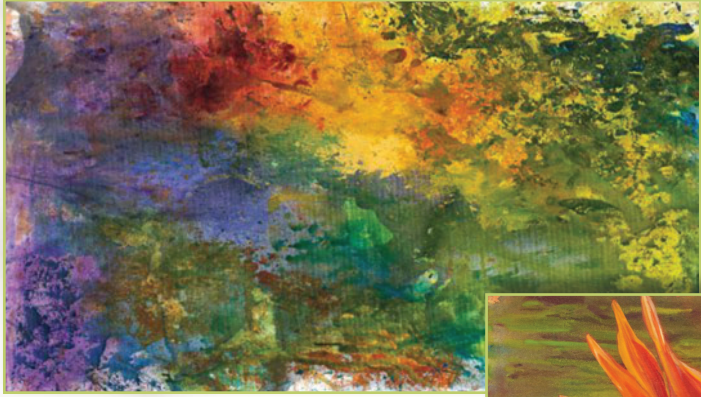


## YOU WILL NEED:

- ◇ 1-5/8 yd Colorwash in Oxford Canvas
- ◇ Panel of Daydreams IV - Sunflower in Oxford Canvas
- ◇ 24" Pillow Form
- ◇ Thread



We hope you enjoy  
this free pattern!

It uses fabric  
from the  
Daydreams IV  
Collection!

Check out our website  
[FronDesignStudios.com](http://FronDesignStudios.com)  
or drop us an email at  
[Orders@FronDesignStudios.com](mailto:Orders@FronDesignStudios.com)  
for even more vibrant  
patterns from

Fron Design Studios

Fron Design Studios  
329 Tenth Avenue SE, Suite 318  
Cedar Rapids, IA 52401  
[www.FronDesignStudios.com](http://www.FronDesignStudios.com)

## DREAMY EURO SHAM



DESIGNED BY MARY PATTERSON EXCLUSIVELY FOR  
FROND DESIGN STUDIOS



# Daydreams Flange Pillow

Finished Size: 24" pillow (approximately 29" x 29" including flange)

What you need for each pillow:

Pillow with black flange:

- Flower fabric from Daydream collection
- Flange & backing fabric - 1-5/8 yd
- 24" pillow form
- Thread

Read all of the instructions before you begin to cut or sew. RST is right sides together, WST is wrong sides together and WOF is width of fabric, the part from selvage to selvage. All measurements include a 3/8" seam allowance unless otherwise specified. Sew with right sides together, unless otherwise noted. Press all seams after sewing for a more finished look.

## Cutting and Assembly

### Pillow Front

1. Square up the flower panel. Ours was 21-1/2" by 21-1/2".
2. Cut 4 strips 5" by WOF for border/flange
3. Cut 2 of the 5" border/flange strips to the same length as your flower panel. Sew them to the sides of the panel.
4. Measure the width of the pillow. Cut 2 border/flange strips the measurement of the width of the pillow. Sew to the top and bottom of the pillow.

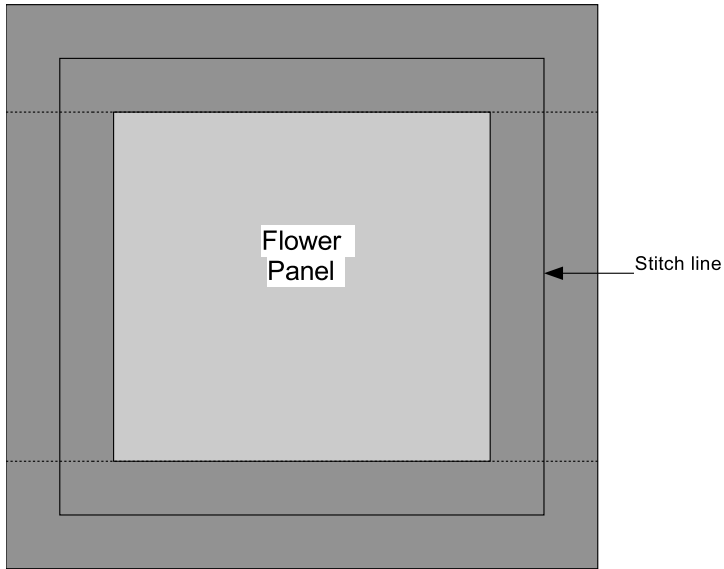
### Pillow Back

1. Cut the pillow fabric back the width of the pillow by the WOF.
2. Cut the fabric on the fold.
3. Press the center edge of each back piece under  $\frac{1}{4}$ " towards the wrong side of the fabric and then  $\frac{1}{2}$ " again to enclose the raw edges. Stitch the hem down.
4. The two back pieces are going to overlap each other.

### Assembling the pillow

1. Lay the back panels onto the front panel, right sides together. Overlap the pillow back pieces by 3" at the center of the pillow front. Pin the overlapping back pieces together. Trim the pillow back pieces to be the same size as the pillow front. Line up the edges and pin into place. Stitch around pillow using a 3/8" seam. Press seams open.
2. Turn pillow right side out.

3. Measure the pillow form. This will determine the placement of the stitch line on the pillow. Our pillow form was 24" square so we found the center of the pillow and marked and pinned a 24" square (Allow a little extra so your pillow form isn't too tight in the pillow). Sew on this line making a square.



4. Insert your pillow form in the opening

Enjoy!