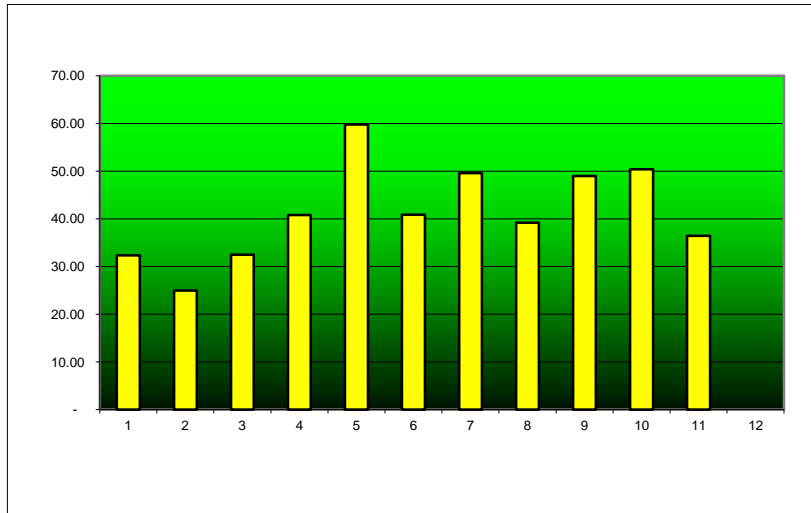


YEAR TO DATE DIVERSION REPORT - 2012

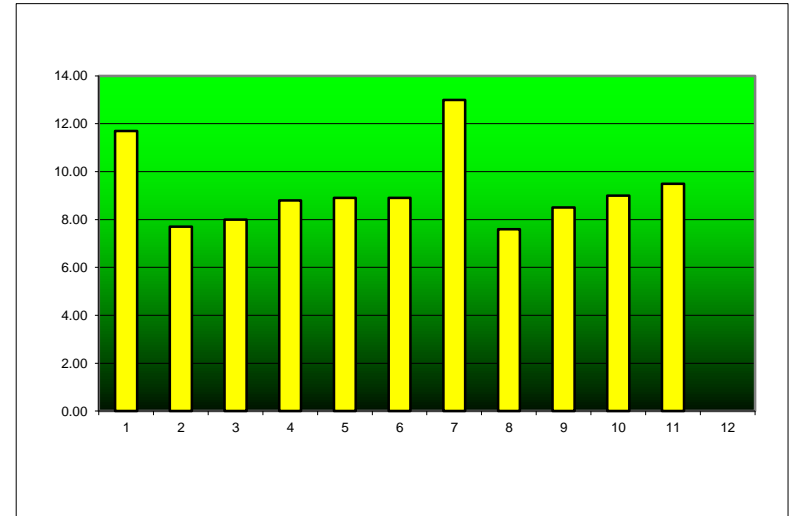
Diversion Tons

Material	Jan	Feb	Mar	Apr	May	Jun	Jul	Aug	Sep	Oct	Nov	Dec
MSW	32.33	24.93	32.46	40.80	59.80	40.88	49.58	39.16	49.00	50.40	36.42	
Recycle	11.70	7.70	8.00	8.80	8.90	8.90	13.00	7.60	8.50	9.00	9.50	
Total Combined	44.03	32.63	40.46	49.60	68.70	49.78	62.58	46.76	57.50	59.40	45.92	0.00
Diversion %	26.57%	23.60%	19.77%	17.74%	12.95%	17.88%	20.77%	16.25%	14.78%	15.15%	20.69%	0.00%

MSW



Recycle



Total
455.76
101.60

557.36

18.23%

