

Sewing & Stitchery e.x.p.o



Featuring sessions by...



Nancy Zieman



Mary Mulari



Eleanor Burns



Janet Pray



Peggy Sagers



Ellen March

It's A Sewing Party!

February 28 – March 3

Puyallup Fair and Events Center

(866) 554-8559



www.sewexpo.com

110 Ninth Avenue SW, Puyallup, WA 98371

2013

Special Events

Friday Night Live! Sponsored by Baby Lock



Kick It Up a Stitch— Second Helping

Nancy Zieman
& Mary Mulari

**EXPO RUNWAY,
PAVILION 2ND FLOOR**
Friday, 6:30 pm

\$25.00

baby lock

FOR THE LOVE OF SEWING

Nancy Zieman and her side kick—or should we say Sous Chef—Mary Mulari invite you to a second helping of Kick It Up a Stitch. “Lettuce entertain you” is the motto of their newest sewing and cooking extravaganza. If you attended the first helping of Kick It Up a Stitch, you know that sewing and cooking have a lot in common. You can sew or cook very simply—then Shazam! you’ll learn how to Kick It Up A Stitch. Nancy and Mary promise plenty of sizzle, spice, and sass, plus an entirely new menu for the second helping show.

Quilters Night Out! Sponsored by Janome



Two Hot Fuser Chicks

Frieda Anderson
& Laura Wasilowski

**EXPO RUNWAY,
PAVILION 2ND FLOOR**
Saturday, 6:30 pm

\$25.00



Believe in Your Creativity
JANOME
www.janome.com

Laura Wasilowski and Frieda Anderson belonged to the same quilting group and they believed fusible web wasn’t getting the respect it deserved. Inspired by the prestigious Chicago School of Architecture, they and a group of friends established the Chicago School of Fusing—with an imaginary campus, faculty, a logo, choir, and a fight song. During their Sew Expo “Quilter’s Night Out!”, they’ll share their creative journey—how they started quilting and why they went to fusing. They will demo their favorite tips and techniques, and share a gallery of their award-winning art quilts. Laura and Frieda’s quilts have been hung at the biggest quilt events in the country—and they teach classes all over the world. Next year they return to Great Britain! At this special QNO, you will laugh and learn; but consider yourself warned—there WILL be singing. (Frieda is mostly responsible for the tambourine...)

Coats & Clark Charity Event



Coats & Clark

Sew You Think You Can Blog??

EXPO RUNWAY, PAVILION 2ND FLOOR
Sunday, 12:30 pm

\$10.00



If you are a sewing or quilting blogger—you could win a guest spot on the *Sew It All* television show.

The 2013 Coats & Clark Charity Event is a live audition with host Ellen March for the *Sew It All* television show! Five chosen finalists will demonstrate a five-minute version of his/her proposed project/technique on the Expo Runway at the *Sew It All* Casting Call event at 12:30 pm on Sunday, March 3, 2013. The audience will vote for their favorite and the top two will be announced at the *Sew It All* wrap party—immediately following the event.

Both auditions will be posted on the internet for online voting until March 15. The winner will receive an expense-paid trip to the *Sew It All* studio in Golden, Colorado to shoot their episode for season 6 of *Sew It All* in mid-October, 2013.

Every penny of the \$10 admission goes to the Mary Bridge Children’s Hospital in Tacoma. For complete details visit: www.sewexpo.com, coatsandclarksewingsecrets.blogspot.com, or www.sewitalltv.com.

2013 Pillowcase Patrol...

Every dollar we raise at this year’s Sunday Charity Event—the Coats & Clark Charity Event—will go to the Mary Bridge Children’s Hospital in Tacoma, Washington. As a part of the “Million Pillowcase Project,” the Sewing & Stitchery Expo will be a collection point (all four days) for handmade pillowcases. Go to your stash—use your imagination—sew, embroider, CREATE cheerful pillowcases for the children who are undergoing treatment at Mary Bridge Children’s Hospital. Look for more information on our website.

ATTENTION: For the security and safety of all attendees, exhibitors, and Expo staff, we request that you leave carts, carriers, and suitcases at home or at your hotel. Purchases maybe be checked at the Coat & Package Check Booth located on the Expo premises. Additionally, only service animals will be permitted entry to the Fairgrounds. Thank you.

Table of Contents

| | |
|-------------------------------------|----------|
| Special Events | 2 |
| Door Prizes | 3 |
| One Needle Sessions | 4 |
| Two Needle Sessions | 20 |
| Three Needle Sessions | 23 |
| Four Needle Sessions | 34 |
| Style Shows | 40 |
| Free Stage | 41 |
| Vendors | 42 |
| Expo Map | 43 |
| Show & Ticket Information | Fold Out |

Dates & Times

| | |
|-----------------------------------|-------------------|
| February 28–March 2 | 8:00 am – 6:00 pm |
| March 3 | 8:00 am – 4:00 pm |
| Hand-on Sessions begin | 8:00 am |
| In-depth Sessions begin | 8:00 am |
| Seminars begin | 8:30 am |
| Vendor Areas open | 8:30 am |



When you buy a ticket to attend Sew Expo, you may be photographed by the show management while shopping, attending classes or special events. These photos may be used in future advertising or promotion of Sew Expo.

In order to promote and encourage social media marketing—we are instituting an “Open Photo Policy”. **Please take pictures** at the show. We **want** you to post those pictures via Facebook, Pinterest or your favorite sewing blogs. Help spread the word about Sew Expo. However, every vendor and teacher may choose to **not** allow pictures in their booth or class. Please respect their wishes.

Door Prizes

Thursday

Brother Model 1500D
Deluxe Sewing, Quilting
& Embroidery Machine
with Disney Designs

Prize Value **\$4499.00**

Donated by:
Quality Sewing & Brother
International



Friday

Pfaff Creative™ 2.0 Sewing
& Embroidery Machine

Prize Value **\$3999.00**

Donated by:
Quality Sewing & Pfaff USA



Viking Opal™ 650
Computerized Sewing
Machine

Prize Value **\$999.00**

Donated by:
Quality Sewing &
Husqvarna Viking



Saturday

Bernina 550 Quilters Edition

Prize Value **\$4,399.00**

Donated by:
Bernina of America/Puget
Sound Dealers



Sunday

Baby Lock Crescendo
Sewing Machine

Prize Value **\$4,999.00**

Donated by:
Baby Lock & the Puget
Sound Baby Lock Retailers

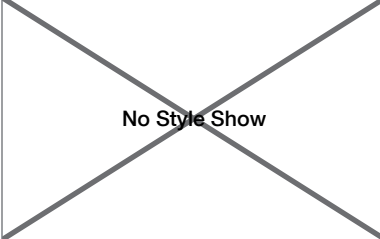


A big thanks to these vendors for their generous donations.



One Needle Sessions (Thursday & Saturday)

| | 8:30 am | 9:30 am | 10:30 am | 11:30 am |
|--------------------------------------------------------|----------------------------------------------------------------------------------|--------------------------------------------------------------------------------------------------|-------------------------------------------------------------------------------------------------------------------|---------------------------------------------------------------------------------------------------------------------------------|
| Expo Stage (Room A) Pavilion (2nd Floor) | No Style Show | #1062 Planes, Trains, Automobiles, or Sofas <i>Mary Mulari</i> THURSDAY ONLY | Simplicity Inspires You to Sew: Fresh Fashion & Fabric Trends <i>Debra Kreiling</i> SATURDAY ONLY | Fashion Trends & Sewing Tips for 2012 Vogue, Butterick, McCall's, & Kwik Sew Patterns <i>Pati Palmer & Marta Alto</i> |
| Room B Showplex | #1002 The Benefits of Longarm Quilting <i>Denise Applegate Schober</i> | #1001 The Pant Fit Challenge <i>Marta Alto</i> | #1069 Making Memories with Fabric <i>Karen Pharr</i> | #1072 The Tee Shirt Dress <i>Cecelia Podolak</i> |
| Room C Showplex | #1064 Prints Charming <i>Nancy Nix Rice</i> | #1070 Perfect Piping: Not Just for Pillows! <i>Vaune Pierce</i> | #1033 What Comes First in Fit? <i>Lorraine Henry</i> | #1038 Curve Basics <i>Shar Jorgenson</i> |
| Room D Showplex | #1031 Machine Embroidery Made Easy! <i>Simon Haskins</i> | #1011 Artful Machine Embroidery <i>Bobbi Bullard</i> | #1007 Sewing with the New Ruffle Fabrics <i>Irene Bonewitz</i> | #1042 Finishing Touches for Your Quilt <i>Debbie Kemp</i> |
| Room E Showplex | #1021 Fitting Sleeves & Armholes <i>Connie Crawford</i> | #1074 Shirt Tales <i>Janet Pray</i> | #1046 Designer Handbag Details <i>Cheryl Kuczek</i> | #1097 Let's Dance! <i>Katrina Walker</i> |
| Room G Showplex | #1081 Quick Gifts From Your "Scrap" Stash <i>Cindy Rowell</i> | #1059 Stash Buster Scrap Quilts <i>Marti Michell</i> | #1044 Discover the Fabric Designer Within You <i>Stephanie Kleinman</i> | #1096 Making Resin Buttons, Embellishments & Closures <i>Fran Valera</i> |
| Room H Centennial | #1030 Get to Know Your Notions <i>Geri Grasvik</i> | #1023 Industry Insider Techniques <i>Louise Cutting</i> | #1028 What Else Can I Do With All Of My Thread? <i>Lee Fletcher</i> | #1060 One Pattern, A Variety of Garments <i>Sandra Miller</i> |
| Room L VIP Tent | #1003 Top Secret Bindings <i>Marci Baker</i> | #1104 Sew Knits with Confidence <i>Nancy Zieman</i> | #1012 Five Perky Patterns <i>Eleanor Burns</i> | #1009 Fun & Easy Applique <i>Jennifer Bosworth</i> |
| Theater Pavilion (2nd Floor) | No Class | #1043 Easy Artsy Applique <i>Barbara Kirk</i> | #1045 From Screen to Cloth <i>Linda Kubik</i> | #1103 Successful Quilt Piecing <i>Mech Watne</i> |
| Free Stage Showplex | Crazy Quilt Blocks <i>Karen Pharr</i> | Abounding In Gowns <i>Laura Nash</i> | Urban Threads: Purveyor of Fine Machine & Hand Embroidery <i>Niamh O'Connor</i> THURSDAY ONLY | Sewing Projects Revealed Style Show <i>American Sewing Guild, Olympia Chapter</i> SATURDAY ONLY |
| | | | | The Fabric Whisperer <i>Lyla Messinger</i> |

| 12:30 pm | | 1:30 pm | 2:30 pm | 3:30 pm | 4:30 pm | |
|------------------------------------------------------------------------------------------------|----------------------------------------------------------------------------------------------|-----------------------------------------------------------------------------------------------------|------------------------------------------------------------------------------------------------|---------------------------------------------------------------------------------------------------------------|---------------------------------------------------------------------------------------|-------------------------------------------------------------------------------------------------------|
| #1083 Fitting Yourself by Yourself <i>Peggy Sagers</i> THURSDAY ONLY | The Best of the Best, 4H Fashion Revue <i>Laura Mendoza</i> SATURDAY ONLY | Sew Away With IPCA <i>Janet Pray</i> | Talk Is Chic <i>Louise Cutting & Linda Lee</i> | #1053 Knitty Gritty on Knits <i>Linda MacPhee</i> |  | |
| #1015 Pattern Basics <i>Kathleen Cheetham</i> | | #1049 Cool Cardigans <i>Pamela Leggett</i> | #1068 Sew to Suc- cess, How to NEVER Have a Sewing Disaster <i>Pati Palmer</i> | #1086 Floor Mats Are Easy <i>Lynnette Sandbloom</i> | | |
| #1093 Success in Paper Piecing <i>Connie Spurlock</i> | | #1054 Upcycle That Garment <i>Marsha McClintock</i> | #1025 Sew & Craft for Profit <i>Pam Damour</i> | #1029 Stabiliz- ers— <i>The Backbone</i> <i>Behind the Stitching</i> <i>Nancy Goldsworthy</i> | #1067 Puckered Up Machine Embroidery <i>Pattie Otto</i> | |
| #1090 Machine Embroidery Embellishment <i>Lisa Shaw</i> | | #1066 Bra Basics <i>Monica O'Rourke Bravo</i> | #1079 Sew Like A Pro <i>Rosebud</i> | #1010 Simply Amazing Photo Quilts! <i>Tammie Bowser</i> | #1014 Electronic Age of Sewing <i>Karen Campbell</i> | |
| #1017 Blending the Old with the New <i>Pam Clarke</i> | | #1101 An Art Quilt Made in the Garden of Eden <i>Laura Wasilowski</i> | #1057 Distinctive Fleece Design <i>Lyla Messinger</i> | #1039 a Fresh Look at Machine Techniques <i>Debra Justice</i> | #1084 Tissue Issues <i>Peggy Sagers</i> | |
| #1047 Downtown Bags <i>Linda Lee</i> | | #1082 Serger 911 <i>Kathy Ruddy</i> | #1055 A New Fasci- nation with Handbags <i>Linda McGehee</i> | #1005 Anatomy of Closures <i>Jan Bones</i> | #1004 Fabric Flower Power <i>Amy Barickman</i> THURSDAY ONLY | #1016 Turning Your Passion Into Profit <i>Kandi Christian</i> SATURDAY ONLY |
| #1075 Thread Therapy with Dr. Bob <i>Bob Purcell</i> | | #1076 Fuss Free Embellishments <i>Sue Purdy</i> | #1094 Creating Texture the Easy Way <i>Annie Unrein</i> | #1008 Color Crayon Fabric Art <i>Dana Bontrager</i> | #1087 New Tee Necklines <i>Emma Seabrooke</i> | |
| #1032 More Quick Gifts to Make <i>Sue Hausmann</i> | | #1091 Photos on Fabric <i>Mike & Vicki Shetter</i> | #1020 Creative Fabric Techniques <i>Barbara Crawford</i> | #1051 Sparkle, Shimmer & Shine <i>Cindy Losekamp</i> | #1037 No Pins, No Basting, No Kidding! <i>Mickey Hudson</i> | |
| #1089 Needle Felted Wonders <i>Laurie Sharp</i> | | #1022 Intro to Counted Cross Stitching <i>Michele Crawford</i> THURSDAY ONLY | #1035 Beginning Silk Ribbon Embroidery <i>Mary Jo Hiney</i> | #1071 Boutique But- tons: Designer Detail <i>Vaune Pierce</i> | #1019 Applique Techniques by Hand <i>Pam Clarke</i> THURSDAY ONLY | |
| Unleash Your Creativity <i>Linda MacPhee</i> | | How Stable Are You? <i>Suzy Seed</i> | It's All About Pillows <i>Karen Erickson</i> | Dazzling Details Trunk Show <i>Marsha McClintock</i> | Teen Wardrobes on a Budget <i>Valley 4-H Style Show</i> | |



One Needle Sessions (Friday & Sunday)

| | 8:30 am | 9:30 am | 10:30 am | 11:30 am |
|--------------------------------------------------------|-------------------------------------------------------------------------------------------------------|------------------------------------------------------------------------------------------------|--------------------------------------------------------------------------------------------------------------------|----------------------------------------------------------------------------------------------------------------------------------------------------|
| Expo Stage (Room A) Pavilion (2nd Floor) | #2001 Fast Fused Quilts <i>Frieda Anderson & Laura Wasilowski</i> SUNDAY ONLY | #1062 Planes, Trains, Automobiles, or Sofas <i>Mary Mulari</i> FRIDAY ONLY | Vogue & Butterick-inspired Everyday Creative's Closet <i>Marcy & Katherine Tilton</i> FRIDAY ONLY | Fashion Trends & Sewing Tips for 2012 Vogue, Butterick, McCall's, & Kwik Sew Patterns <i>Pati Palmer & Marta Alto</i> FRIDAY ONLY |
| Room B Showplex | #1002 The Benefits of Longarm Quilting <i>Denise Applegate Schober</i> | #1068 Sew to Success, How to NEVER Have a Sewing Disaster <i>Pati Palmer</i> | #1078 Artistic Tops & Tees <i>Londa Rohlfing</i> | #1073 Perfecting the Pull-On Pant <i>Cecelia Podolak</i> |
| Room C Showplex | #1065 Sew Skinny <i>Nancy Nix-Rice</i> | #1038 Curve Basics <i>Shar Jorgenson</i> | #1067 Puckered Up Machine Embroidery <i>Pattie Otto</i> | #1093 Successful Paper Piecing <i>Connie Spurlock</i> |
| Room D Showplex | #1080 Bag a Jacket Lining <i>Rosebud</i> | #1031 Machine Embroidery Made Easy <i>Simon Haskins</i> | #1014 Electronic Age of Sewing <i>Karen Campbell</i> | #1066 Bra Basics <i>Monica O'Rourke Bravo</i> |
| Room E Showplex | #1040 All Ruffled Up <i>Debra Justice</i> | #1074 Shirt Tales <i>Janet Pray</i> | #1102 Spring Leaves, A Quick Art Quilt <i>Laura Wasilowski</i> FRIDAY ONLY | #1062 Planes, Trains, Automobiles, or Sofas <i>Mary Mulari</i> SUNDAY ONLY |
| Room G Showplex | #1013 Threads & Needles, What You Really Need to Know <i>Steve Butler</i> | #1006 The Ultimate in Under Things <i>Jan Bones</i> | #1048 Tanks Again <i>Linda Lee</i> | #1018 Borders & Sashing Machine Quilting Designs <i>Pam Clarke</i> |
| Room H Centennial | #1024 New – Updated One Seam Pants <i>Louise Cutting</i> | #1008 Color Crayon Fabric Art <i>Dana Bontrager</i> | #1061 What Can I Do with All Those Leftovers? <i>Sandra Miller</i> | #1096 Making Resin Buttons, Embellishments & Closures <i>Fran Valera</i> |
| Room L VIP Tent | #1020 Creative Fabric Techniques <i>Barbara Crawford</i> | #1032 More Quick Gifts to Make <i>Sue Hausmann</i> FRIDAY ONLY | #1052 Do It in the Hoop <i>Cindy Losekamp</i> SUNDAY ONLY | #1104 Sew Knits with Confidence <i>Nancy Zieman</i> FRIDAY ONLY |
| | | | #1046 Designer Handbag Details <i>Cheryl Kuczek</i> SUNDAY ONLY | #1088 Add Stay Tapes to Make Knits Look Professional <i>Emma Seabrooke</i> |
| Theater Pavilion (2nd Floor) | No Class | #1036 Mixed Media Projects <i>Mary Jo Hiney</i> | #1045 From Screen to Cloth <i>Linda Kubik</i> | #1043 Easy Artsy Applique <i>Barbara Kirk</i> |
| Free Stage Showplex | Fab Fleece Accessories <i>Pattie Otto</i> | Up-cycled & Re-purposed <i>Barbara Kirk</i> | It's All About Pillows <i>Karen Erickson</i> | How Stable Are You? <i>Suzy Seed</i> |

| 12:30 pm | | 1:30 pm | | 2:30 pm | 3:30 pm | 4:30 pm |
|------------------------------------------------------------------------|---------------------------------------------------|--------------------------------------------------------------------|---------------------------------------------------------|-----------------------------------------------------------------------------|--------------------------------------------------------------------------------------|-----------------------------------------------------------------------------------------|
| Goodwill Fashion Show FRIDAY ONLY | Coats & Clark Charity Event SUNDAY ONLY | #1085 Pants That Fit <i>Peggy Sagers</i> FRIDAY ONLY | Ticket to Paradise <i>IPCA</i> SUNDAY ONLY | Talk Is Chic <i>Louise Cutting & Linda Lee</i> FRIDAY ONLY | No Show | No Show |
| #1027 Home Décor for Rookies <i>Karen Erickson</i> | | #1069 Making Memories with Fabric <i>Karen Pharr</i> | | #1086 Floor Mats Are Easy <i>Lynnette Sandbloom</i> | #1001 The Pant Fit Challenge <i>Marta Alto</i> FRIDAY ONLY | #1015 Pattern Basics <i>Kathleen Cheetham</i> FRIDAY ONLY |
| #1092 Jewelry From Your Stash <i>Robyn Spady</i> | | #1063 Contemporary Vintage <i>Laura Nash</i> | | #1054 Upcycle That Garment <i>Marsha McClintock</i> | #1034 Fitting the Four B's <i>Lorraine Henry</i> FRIDAY ONLY | #1025 Sew & Craft for Profit <i>Pam Damour</i> FRIDAY ONLY |
| #1010 Simply Amazing Photo Quilts <i>Tammie Bowser</i> | | #1007 Sewing with the NEW Ruffle Fabrics <i>Lorene Bonewitz</i> | | #1011 Artful Machine Embroidery <i>Bobbi Bullard</i> | #1042 Finishing Touches for Your Quilt <i>Debbie Kemp</i> FRIDAY ONLY | #1090 Machine Embroidery Embellishment <i>Lisa Shaw</i> FRIDAY ONLY |
| #1050 Knits & Fits <i>Pamela Leggett</i> | | #1021 Fitting Sleeves & Armholes <i>Connie Crawford</i> | | #1098 Make Your Fabric Work for You <i>Katrina Walker</i> | #1046 Designer Handbag Details <i>Cheryl Kuczek</i> FRIDAY ONLY | #1058 Sheer Delight <i>Lyla Messinger</i> FRIDAY ONLY |
| #1082 Serger 911 <i>Kathy Ruddy</i> | | #1059 Stash Buster Scrap Quilts <i>Marti Michell</i> | | #1081 Quick Gifts from your "Scrap" Stash <i>Cindy Rowell</i> | #1004 Fabric Flower Power <i>Amy Barickman</i> FRIDAY ONLY | #1041 Sewing With ARMOMMY <i>Jane Kelly & Rae Friis</i> FRIDAY ONLY |
| #1028 What Else Can I Do With All Of My Thread? <i>Lee Fletcher</i> | | #1030 Get to Know Your Notions <i>Geri Grasvik</i> | | #1095 Set a Pretty Table <i>Annie Unrein</i> | #1099 Zippers & Dolls <i>Nadeen Ward</i> FRIDAY ONLY | #1026 Shibori-From Arimatsu to Long Beach <i>Glennis Dolce</i> FRIDAY ONLY |
| #1003 Top Secret Bindings <i>Marci Baker</i> | | #1009 Fun & Easy Applique <i>Jennifer Bosworth</i> | | #1012 Five Perky Patterns <i>Eleanor Burns</i> | #1037 No Pins, No Basting, No Kidding! <i>Mickey Hudson</i> FRIDAY ONLY | #1052 Do It In the Hoop! <i>Cindy Losekamp</i> FRIDAY ONLY |
| #1089 Needle Felted Wonders <i>Laurie Sharp</i> | | #1103 Successful Quilt Piecing <i>Mech Watne</i> | | #1071 Boutique Buttons - A Designer Detail! <i>Vaune Pierce</i> | #1035 Beginning Silk Ribbon Embroidery <i>Mary Jo Hiney</i> FRIDAY ONLY | No Class |
| Unleash Your Creativity <i>Linda MacPhee</i> | | Doll Clothes R Sew Much Fun <i>Nadeen Ward</i> | | That's SO Not a Sweatshirt! <i>Londa Rohlfing</i> | Crazy Quilt Blocks <i>Karen Pharr</i> FRIDAY ONLY | Teen Wardrobe on a Budget <i>Valley 4-H</i> FRIDAY ONLY |



#1001 The Pant Fit Challenge

Marta Alto, Palmer/Pletsch

ROOM B, SHOWPLEX BLDG.

Thu. (#1001A), Sat. (#1001C) 9:30 am

Fri. (#1001B) 3:30 pm



Learn to tissue-fit pants for any style. Pattern prep and crotch curve; how to eliminate a baggy back; fit regular and contour waistbands—then tweak in fabric. Learn the new sewing order for jeans and how to fit snug jeans. You'll see fitting on many figure types.

#1002 The Benefits of Longarm Quilting

Denise Applegate-Schober, LiTen Up Technologies, Inc./Quality Sewing

ROOM B, SHOWPLEX BLDG.

Thu. (#1002A), Sat. (#1002C) 8:30 am

Fri. (#1002B), Sun. (#1002D) 8:30 am



Are you thinking about purchasing a quilting machine and frame? Do you already own one? Learn techniques and see how easy it is to get started with frame quilting. Learn the features and benefits; how to add corners; handle borders, edge to edge or free motion your quilt.

#1003 Top Secret Bindings

Marci Baker, Quilt with Marci Baker/

Alicia's Attic Inc./The Pine Needle

ROOM L, VIP TENT

Thu. (#1003A), Sat. (#1003C) 8:30 am

Fri. (#1003B), Sun. (#1003D) 12:30 pm



Learn how to make a perfect binding in this *Know Before You Sew™* lecture. Problems like rounded, pointed, and tucked corners, lumpy finishes, and bindings that are not filled to the edge will be covered. Make your own sample and learn about bias, grain, double-fold, strip width, mitered corners and a smooth ending.

#1004 Fabric Flower Power!

Amy Barickman, Indygo Junction/The Loft

ROOM G, SHOWPLEX BLDG.

Thu. (#1004A) 4:30 pm

Fri. (#1004B) 3:30 pm



Express your individual style by adding a “wink” to your wardrobe or room with fabric flowers. Recycle your jeans, ties and t-shirts, combine cotton prints into one-of-a-kind fashion statements, create paint-like effects and play with felt, wools, and silks. Traditional methods will be presented along with short-cut methods.

#1005 Anatomy of Closures

Jan Bones, Lingerie Secrets Patterns

ROOM G, SHOWPLEX BLDG.

Thu. (#1005A), Sat. (#1005C) 3:30 pm



Closures may zip, button, wrap, tie, loop or snap. Closures can be functional, decorative or invisible. They can be simple or the most important design element in a garment. Jan will teach a variety of closure techniques for all styles of clothing.

#1006 The Ultimate in Under-Things

Jan Bones, Lingerie Secrets Patterns

ROOM G, SHOWPLEX BLDG.

Fri. (#1006B), Sun. (#1006D) 9:30 am

Cotton camisoles keep you cool and comfy. But when elegance is key, you need silky. The right slip can make a big difference in your skirts! Jan is also introducing her new “One Piece Hooded Robe”. Your “under-things” should be the best part of your wardrobe!

#1007 Sewing with the NEW Ruffle Fabrics

Lorene Bonewitz, Sew It Up.com

ROOM D, SHOWPLEX BLDG.

Thu. (#1007A), Sat. (#1007C) 10:30 am,

Fri. (#1007B), Sun. (#1007D) 1:30 pm



Have you seen the NEW Ruffle fabrics? They are super soft, drape well and make for fast easy projects. Lorene will show you which needles, thread and notions to use and how to finish your seams and hems. She will bring a trunk show for ladies and children to inspire you!

#1008 Color Crayon Fabric Art

Dana Bontrager, Dana Marie Design Co.

ROOM H, CENTENNIAL BLDG.

Thu. (#1008A), Sat. (#1008C) 3:30 pm

Fri. (#1008B), Sun. (#1008D) 9:30 am



Do you have a bucket full of broken crayons to keep the kids entertained? Use them to create wonderful works of fabric art.

You'll learn many techniques: how to create transfers on your computer, color and stitch, stencil, fine-tip outlines, embroider and color, stamp, work with shavings and more!

#1009 Fun & Easy Applique

Jennifer Bosworth, Shabby Fabrics

ROOM L, VIP TENT

Thu. (#1009A), Sat. (#1009C) 11:30 am

Fri. (#1009B), Sun. (#1009D) 1:30 pm



If your applique comes up short of expectations, take this class. Jennifer will share her tips and techniques to achieve beautiful results every time. She'll demonstrate her method using spray starch and freezer paper. You will get stunning results quickly and easily!

#1010 Simply Amazing Photo Quilts!

Tammie Bowser, Mosaic Quilt Studio

ROOM D, SHOWPLEX BLDG.

Thu. (#1010A), Sat. (#1010C) 3:30 pm

Fri. (#1010B), Sun. (#1010D) 12:30 pm



Transform ordinary fabric squares into beautiful photographic quilts! The quilts look intricate and difficult, but it's easy when you have the secrets. Each quilted photo only takes a few hours to make and you'll learn simple sewing techniques that will reduce your sewing time by 85%.

#1011 Artful Machine Embroidery

Bobbi Bullard, Bullard Designs

ROOM D, SHOWPLEX BLDG.

Thu. (#1011A), Sat. (#1011C) 9:30 am

Fri. (#1011B), Sun. (#1011D) 2:30 pm



Bobbi has written the reference book for machine embroidery and she will share her knowledge of layout and the rules of good design. Bobbi covers stabilizers, hooping, the finer points of multiple hoopings, continuous designs, perfect placement, and a discussion on the best and newest tools.

#1012 Five Perky Patterns

Eleanor Burns, Quilt In A Day

ROOM L, VIP TENT

Thu. (#1012A), Sat. (#1012C) 10:30 am

Fri. (#1012B), Sun. (#1012D) 2:30 pm



Eleanor shares her five newest patterns featuring accurate techniques and tools to achieve great perky points. Braid in a Day, Kylee's Kite, Storm at Sea, Oriental Fan and Mini Dresden Plate offer a great range of variety—something for everyone! Come join the humorous presentation Eleanor is famous for.

#1013 Threads & Needles, What You Really Need to Know

*Steve Butler, American & Efird, LLC/
Viking Sewing & Vacuum*

ROOM G, SHOWPLEX BLDG.

Fri. (#1013B), Sun. (#1013D) 8:30 am



Why does your sewing machine "like" one thread type and not another? This seminar discusses: sewing threads - their manufacture and handling characteristics; sewing machine needles with recommended applications; and simple sewing machine troubleshooting and maintenance tips. This class will improve the quality of your sewing experience.

#1014 Electronic Age of Sewing

Karen Campbell, Wild Ginger Software

ROOM D, SHOWPLEX BLDG.

Thu. (#1014A), Sat. (#1014C) 4:30 pm

Fri. (#1014B), Sun. (#1014D) 10:30 am



With computers in our sewing machine and sewing rooms, learn about the resources available online (including LINKS). Custom e-patterns, project instructions, sewing classes, online videos, cyber bookshelves, embroidery designs, forums, blogs and more are included. Travel the internet with techie Karen. Learn to quickly assemble a download pattern and organize your e-stash.

#1015 Pattern Basics

Kathleen Cheetham, Petite Plus Patterns

ROOM B, SHOWPLEX BLDG.

Thu. (#1015A), Sat. (#1015C) 12:30 pm

Fri. (#1015B) 4:30 pm



Pattern questions? We'll cover: understanding the information on a pattern envelope; sizing patterns versus ready-to-wear; what to measure and how to select your size; making the most of multi-size patterns; swapping pattern pieces, helpful tools and terms. Also learn the difference between commercial and independent patterns.

#1016 Turning Your Passion Into Profit: Selling What You Sew

Kandi Christian, Sew Timeless

ROOM G, SHOWPLEX BLDG.

Sat. Only (#1016C) 4:30 pm



How do you market your hand made products? Set your prices? Find retailers to sell your crafts? Do you need a website? Will social networking help? Get the information you need to succeed. We'll even talk about how to get on a TV show.

#1017 Blending the Old with the New

Pam Clarke, Designs with Lines

ROOM E, SHOWPLEX BLDG.

Thu. (#1017A), Sat. (#1017C) 12:30 pm



What can you do with quilt blocks, tops or a quilt that needs repair? How can you repair a finished quilt or clean and preserve quilt heirlooms? Pam will share many ideas for those special pieces—pillows, Christmas stockings, clothing, baby quilts, toys, pin cushions, and much more.

#1018 Borders & Sashing Machine Quilting Designs

Pam Clarke, Designs with Lines

ROOM E, SHOWPLEX BLDG.

Fri. (#1018B), Sun. (#1018D) 11:30 am

Use straight lines as a guide with a little chalk—discover how easy it is to fill the quilt borders and sashing to come out even for machine quilting. So simple—YOU CAN DO THIS. Bring a pencil to class and follow along with this no fuss method.

#1019 Appliqué Techniques by Hand

Pam Clarke, Designs with Lines

THEATER, PAVILION 2ND FLOOR

Thu. (#1019A) 4:30 pm

In this hands-on hand-applique class, you will learn how to make perfect leaves, circles, points and curves. Bring scissors for paper and fabric and everything else will be provided in a small kit to be made into a bag, needle holder or Kindle cover. \$3 kit fee. Limited to 30 people.

#1020 Creative Fabric Technique

Barbara Crawford, Crawford Designs

ROOM L, VIP TENT

Thu. (#1020A), Sat. (#1020C) 2:30 pm

Fri. (#1020B), Sun. (#1020D) 8:30 am



Have you ever seen a fabric technique and wondered how they did it? This seminar will cover ruching and texturizing silk without needles and thread; creating your own printed design; adding another color all in one shot. Nuno felt chiffon silk with bubble wrap by pushing it through the silk.

#1021 Fitting Sleeves & Armholes

Connie Crawford, Fashion Patterns by Coni

ROOM E, SHOWPLEX BLDG.

Thu. (#1021A), Sat. (#1021C) 8:30 am

Fri. (#1021B), Sun. (#1021D) 1:30 pm



Learn the key to making correct armholes and properly fitting sleeves. Using her patternmaking experience from the fashion industry, Connie will demonstrate how to make the armhole fit

your body. She will demonstrate on ladies from the audience how to make the sleeve fit correctly into your custom armhole.

#1022 Intro to Counted Cross Stitching

Michele Crawford, Flower Box Quilts

THEATER, 2ND FLOOR PAVILION

Thu. (#1022A) 1:30 pm



Come learn the basics of counted cross-stitch embroidery. We will explore different types of canvas (fabric); types of needles and threads; how to read a chart; the basic stitches plus tips and techniques. We will cross stitch a simple design that will fit a 2¼" round acrylic magnet. There is a kit fee of \$3 that includes the fabric, floss, needle, chart and Mason jar ring. Limited to 30 people.

#1023 'Industry Insider Techniques': Garment Sewing

Louise Cutting, Cutting Corners/Cutting Line Designs

ROOM H, CENTENNIAL BLDG.

Thu. (#1023A), Sat. (#1023C) 9:30 am



Take different sections of a garment and learn the professional way to sew the details. Create the best-looking collar band; a 'cool' collar with foolproof corner edge stitching; set in a high capped sleeve with no gathering stitching; sleeve placket and more...all the elements for great details with efficiency.

#1024 Cutting In...Cutting Out For The New—Updated—One-Seam Pants®

Louise Cutting, Cutting Corners/Cutting Line Designs

ROOM H, CENTENNIAL BLDG.

Fri. (#1024B), Sun. (#1024D) 8:30 am

The *One-Seam Pants*® are in every designer collection because they flatter your figure. These pants have no side seams, are quick, easy and comfortable. But as figures change with age and weight...changes need to be made. You can have a great new pair of pants with an hour of sewing.

#1025 Sew & Craft for Profit

Pam Damour, The Decorating Diva

ROOM C, SHOWPLEX BLDG.

Thu. (#1025A), Sat. (#1025C) 2:30 pm

Fri. (#1025B) 4:30 pm



Have you ever wanted to start your own business? Join Pam as she shares the ups and downs of owning your own sewing or crafting business. Learn the steps to start, then how to market and price your product. Having your own home-based business can be profitable and fun.

#1026 Shibori: From Arimatsu to Long Beach

Glennis Dolce, *Shiborigirl Studios*

ROOM H, CENTENNIAL BLDG.

Fri. Only (#1026B) 4:30 pm



See a demonstration of Shibori techniques accompanied by a myriad of samples from the Arimatsu Shibori Festival in Japan. See how these traditional designs are created and how you can create your own Shibori fabrics.

#1027 Home Decor Sewing for Rookies

Karen Erickson, *Home Fashions U/ Slipcover America*

ROOM B, SHOWPLEX BLDG.

Fri. (#1027B), Sun. (#1027D) 12:30 pm



Decorating your home does not have to be expensive. Save lots of \$\$ by doing it yourself. Learn home decor terminology; tools, up cycling, and sewing machine tips that will help get you started. Karen will share a trunk show of her favorite Rookie projects.

#1028 What Else Can I Do with All My Thread?

Lee Fletcher, *Sulky of America*

ROOM H, CENTENNIAL BLDG.

Thu. (#1028A), Sat. (#1028C) 10:30 pm

Fri. (#1028B), Sun. (#1028D) 12:30 pm



We all know that specialty threads are wonderful for all kinds of garment and quilting embellishment, but there is a whole world of other ways that thread can be used to make unique items. We will discuss how and show you some great projects. We will have handouts for some projects and will also talk about how to use embellishment threads in your machine and by hand.

#1029 Stabilizers: The Backbone Behind the Stitching

Nancy Goldsworthy, *Wonderfil Specialty Threads*

ROOM C, SHOWPLEX BLDG.

Thu. (#1029A), Sat. (#1029C) 3:30 pm



When we think of stabilizers, we think machine embroidery. What about all the other times fabric needs to be supported before, during and after the stitching? Today's stabilizers iron on, peel off, melt away and crinkle with heat. Nancy will help you find your way through the layers of options.

#1030 Get to Know Your Notions

Geri Grasvik, *The Pine Needle*

ROOM H, CENTENNIAL BLDG.

Thu. (#1030A), Sat. (#1030C) 8:30 am

Fri. (#1030B), Sun. (#1030D) 1:30 pm



See a trunk show of new notions that will provide excellence in your sewing while streamlining your efforts. New notions are coming onto the sewing scene all the time. Join Geri and learn how to save money as she provides information on what to buy and what NOT to buy.

#1031 Machine Embroidery Made Easy!

Simon G Haskins, *Jenny Haskins Products/ RNK Distributing*

ROOM D, SHOWPLEX BLDG.

Thu. (#1031A), Sat. (#1031C) 8:30 am

Fri. (#1031B), Sun. (#1031D) 9:30 am



Learn the best tips, tricks and techniques Jenny and Simon have developed to make your machine embroidery and quilts easy and beautiful. Simon will show a trunk show of their latest quilts and embroidery.

#1032 More Quick Gifts to Make

Sue Hausmann, *Husqvarna Viking*

ROOM L, VIP TENT

Thu. (#1032A), Sat. (#1032C) 12:30 pm

Fri. (#1032B) 9:30 am



Sue is known for Quick, Quicker, and Quickest Gifts and this class is all about her newest and favorite gift projects. You will see ideas for every age and virtually every occasion. This is Sue's favorite topic and many of these projects can be made in two or three hours.

#1033 What Comes First in Fit?

Lorraine Henry, *L H Enterprises/ Two Easy Tape Co.*

ROOM C, SHOWPLEX BLDG.

Thu. (#1033A), Sat. (#1033C) 10:30 am



Understanding the principles of doing alterations is crucial for accuracy in fit. Learn the elements of working with flat patterns to get them to fit our rounded bodies. How to select the right size; industry standards in pattern measurements and other not often talked about topics will be covered.

#1034 Fitting the Four B's

Lorraine Henry, *L H Enterprises/Two Easy Tape Co.*

ROOM C, SHOWPLEX BLDG.

Fri. Only (#1034B) 3:30 pm

Bellies, boobs, butts and backs! These are the four areas that cause fitting fits! Follow the order in this common sense

approach to pattern alteration and you CAN learn to fit yourself and others. Multiple figure adjustments will be demonstrated.

#1035 Beginning Silk Ribbon Embroidery

Mary Jo Hiney, Mary Jo Hiney Designs

THEATER, PAVILION 2ND FLOOR

Thu. (#1035A), Sat. (#1035C) 2:30 pm

Fri. (#1035B) 3:30 pm



Whether you are novice or in need of a refresher class, this is a hands-on opportunity to learn or review the basics of silk ribbon embroidery. There is an additional \$3.00 kit fee for class that will include ribbon, needle, fabric and basic instructions. Bring a small scissors. Limited to 30 people.

#1036 Mixed Media Projects

Mary Jo Hiney, Mary Jo Hiney Designs

THEATER, PAVILION 2ND FLOOR

Fri. (#1036B), Sun. (#1036D) 9:30 am

Mary Jo demonstrates her expert mixed media techniques used when creating with fabric, glue and cardboard. Learn to apply this technique to projects that require structure. Mary Jo will show you how to cut, score, bend and roll cardboard accurately. Learn what tools and glues are best; how to laminate fabric to cardboard, pad and wrap, and assemble. Limited to 30 people.

#1037 No Pins, No Basting, No Kidding!

Mickey Hudson, Islander Sewing Systems

ROOM L, VIP TENT

Thu. (#1037A), Sat. (#1037C) 4:30 pm

Fri. (#1037B) 3:30 pm



Sew faster & easier by learning speed techniques from the garment industry. Some industrial techniques used in ready-to-wear garments include handling curves, crossing seams, methods for pockets, hems, flat felled seams and more. Also, master the industrial secrets for setting zippers.

#1038 Curve Basics

Shar Jorgenson, Quilting From the Heartland

ROOM C, SHOWPLEX BLDG.

Thu. (#1038A), Sat. (#1038C) 11:30 am

Fri. (#1038B), Sun. (#1038D) 9:30 am



Learn about correct seam allowances and finger pressing, why/how to use a stiletto or a glue stick, and why an anchor cloth is important. Learn why Shar goes backwards at the beginning of every cut. Cut six layers with a small cutter and manipulate the fabric when cutting curves.

#1039 A Fresh Look at Machine Techniques

Debra Justice, Labours of Love

ROOM E, SHOWPLEX BLDG.

Thu. (#1039A), Sat. (#1039C) 3:30 pm



Take your machine techniques to the next level. Debra will teach you how to do double and triple rows of top stitching, reverse threading for "floating" tucks/darts; and precision invisible rolled edges. Debra will demonstrate how to do even gathers and pleats; faux bobbin tucks and her own stir stick lace. See classic French seams, how to make your own matching piping and bias tape, and much more.

#1040 All Ruffled Up

Debra Justice, Labours of Love

ROOM E, SHOWPLEX BLDG.

Fri. (#1040B), Sun. (#1040D) 8:30 am

The Ruffler is the most efficient way to ruffle, pleat or puff fabric with perfection every time. Learn how to install, maintain and use it. Learn to finish raw edges, understand fullness and calculate yardage. See how to attach ruffles freestyle, ruffling and attaching them in one step. Turn them into fun t-shirts, rose cushions, quilts, curtains, bags, and more.

#1041 Sewing with ARMOMMY

Jane Kelly & Rae Friis, ARMOMMY

ROOM G, SHOWPLEX BLDG.

Fri. Only (#1041B) 4:30 pm



Jane and Rae of ARMOMMY will present three fun projects for sewers of all ages and skill level. See the popular 'fort in a bag' for kiddos, reusable snack bags and reusable produce bags. You will receive instructions for each project, as well as important hyperlinks.

#1042 Finishing Touches for Your Quilt

Debbie Kemp, Metropolitan Quilt. LLC

ROOM D, SHOWPLEX BLDG.

Thu. (#1042A), Sat. (#1042C) 11:30 am

Fri. (#1042B) 3:30 pm



This is the class for alternative quilt binding techniques. Learn ways to do a scalloped edge, or how and when to consider a picot treatment instead of traditional binding. Learn how to use tools combined with tips and tricks to make a flawless, unique finish for your original quilts.

#1043 Easy Artsy Applique

Barbara Kirk, Esther's Fabrics

THEATER, PAVILION 2ND FLOOR

Thu. (#1043A), Sat. (#1043C) 9:30 am

Fri. (#1043B), Sun. (#1043D) 11:30 am



Using fabric scraps, sticky back fusible web and straight stitching, Barbara will show you how to create simple, charming applique art. We use it for pillows, wall hangings, notecards, bags and more. It's easy, satisfying, fast, and creative. Limited to 30 people.

#1044 Discover the Fabric Designer Within You!

Stephanie Kleinman, Fabric Studio

ROOM G, SHOWPLEX BLDG.

Thu. (#1044A), Sat. (#1044C) 10:30 am



It is now easier than ever in this new digital age to create your own personalized fabric designs and turn them into yardage. Learn about the various software programs available to create a seamless graphic to be repeated over a yard of fabric; the different options for printing your designs, and what affects your final output. See the many different projects made with personalized fabrics that will get your own creative juices flowing!

#1045 From Screen to Cloth

Linda Kubik, Linda Kubik, Atelier

THEATER, PAVILION 2ND FLOOR

Thu. (#1045A), Sat. (#1045C) 10:30 am

Fri. (#1045B), Sun. (#1045D) 10:30 am



Surface design can be confusing. What is the difference between stamps, stencils and screen-printing and where is each appropriate? How are they applied and what types of inks, paints and dyes are best? Join Linda as she relives her journey of applying design to fabric, sharing years of samples, tips and ideas. Limited to 30 people.

#1046 Designer Handbag Details

Cheryl Kuczek, Paradiso Designs/Quiltworks Northwest

ROOM E, SHOWPLEX BLDG.

Thu. (#1046A), Sat. (#1046C) 10:30 am

Fri. (#1046B) 3:30 pm,

ROOM L, VIP TENT

Sun. (#1046D) 10:30 am



A \$1200 designer handbag is all about the details. Learn how to make those important details and you could be carrying a fabulous bag that you made for pennies on the dollar. Feel free to ask questions.

#1047 Downtown Bags

Linda Lee, The Sewing Workshop

ROOM G, SHOWPLEX BLDG.

Thu. (#1047A), Sat. (#1047C) 12:30 pm



Real bags—the ones you carry every day to shop, to tote, to toss around. Come to this runway show of bags and see an array of unique bags using workhorse fabrics,

eco-friendly materials and hardware that lasts a lifetime. Bags that are cool, fashionable and fun to make.

#1048 Tanks Again

Linda Lee, The Sewing Workshop

ROOM G, SHOWPLEX BLDG.

Fri. (#1048B), Sun. (#1048D) 10:30 am

Tank tops are the must-have wardrobe staple. Learn to use one pattern and change it so many times you won't recognize it. Take a basic tank pattern and add sleeves, lengthen it to make a tunic or dress, and see multiple ways to finish.

#1049 Cool Cardigans

Pamela Leggett, Pamela's Patterns/

Palmer/Pletsch

ROOM B, SHOWPLEX BLDG.

Thu. (#1049A), Sat. (#1049C) 1:30 pm



Cardigans are a popular fashion accessory, but getting them to fit and drape in the proper proportions can be a challenge. Learn what goes into making—and fitting—two great styles from Pamela's Patterns, including mitred vents, ruched neckline and shaped facings.

#1050 Knits & Fits

Pamela Leggett, Pamela's Patterns/Palmer/Pletsch

ROOM E, SHOWPLEX BLDG.

Fri. (#1050B), Sun. (#1050D) 12:30 pm

Pamela will take the fear out of selecting and sewing knit fabrics. The easiest way to cut, the best stitches to use, ready-to-wear secrets and how to get your seams, necklines and hems to lay smooth. We'll discuss "real" women fitting issues.

#1051 Sparkle, Shimmer & Shine

Cindy Losekamp, Sew Artfully Yours

ROOM L, VIP TENT

Thu. (#1051A), Sat. (#1051C) 3:30 pm



Make your projects shimmer! Angelina for appliqué fabric? Mylar for embroidery? Learn about the new Angelina film. Is it washable? What kind of embroidery designs work best? You'll see the latest in jackets, tote bags, quilt-in-the-hoop projects and pillows that sparkle and shine.

#1052 Do It In The Hoop!

Cindy Losekamp, Sew Artfully Yours

ROOM L, VIP TENT

Fri. (#1052B) 4:30 pm

Sun. (#1052D) 9:30 am

Use the machine embroidery hoop to create! Hoop some stabilizer and you're on your way. Cindy will guide you through new ways to create in the hoop—make purses, cases, bags,

holders. Also see fresh ideas and techniques for quilts, borders, blankets, and facings.

#1053 Knitty Gritty on Knits

Linda MacPhee, MacPhee Workshop

EXPO RUNWAY, PAVILION, 2ND FLOOR

Thu. (#1053A), Sat. (#1053C) 3:30 pm

Linda's favorite knit fabric of all time has been slinky because it is so slimming, non-cling, non-static and perfect for travel. Her newest fave is BAMBOO—which has the same wonderful properties! Linda will teach you how to sew on knits, which patterns to choose, finishing details and fitting.



#1054 Upcycle that Garment

Marsha McClintock, Saf-T-Pockets Patterns

ROOM C, SHOWPLEX BLDG.

Thu. (#1054A), Sat. (#1054C) 1:30 pm

Fri. (#1054B), Sun. (#1054D) 2:30 pm

Pull old items from your closet and give them new life. See how to turn a dress shirt into an adorable apron, a leather skirt or jacket into a tote bag, make a scarf from a t-shirt, turn old jeans into fun accessories plus lots of other creative ideas.



#1055 A New Fascination with Handbags

Linda McGehee, Ghee's

ROOM G, SHOWPLEX BLDG.

Thu. (#1055A), Sat. (#1055C) 2:30 pm

Make bags with character to fit your needs. Easy, right? No matter what style bag, there are tricks of the trade. Straps, pockets, hardware, and closures are some of the basics. Use handbags as a palette to play with your sewing machine while creating bags uniquely your own.



#1056 Sew Clever

Linda McGehee, Ghee's

ROOM G, SHOWPLEX BLDG.

Fri. (#1056B), Sun. (#1056D) 11:30 am

Linda McGehee has devised simple ways to enhance fabric with corded piping, threads, organza, and more. By the use of feet, needles, and special tools, and, with today's marvelous sewing machines, Linda applies her step-by-step process to transform details from ordinary and practical to exotic accent pieces. Always new and different, Linda's concepts and techniques make texture and detail very satisfying. Apply to garments, quilts, and of course handbags.

#1057 Distinctive Fleece Design

Lyla J Messinger, L.J. Designs

ROOM E, SHOWPLEX BLDG.

Thu. (#1057A), Sat. (#1057C) 2:30 pm

Lyla's NEW Fleece class focuses on combining fleece with other fabrics and notions. You will learn new skills and techniques and that fleece doesn't have to scream SPORTY. It is such a comfortable, easy care fabric, and can be very stylish with the right finishes.



#1058 Sheer Delight

Lyla J Messinger, L.J. Designs

ROOM E, SHOWPLEX BLDG.

Fri. Only (#1058B) 4:30 pm

Sheers are here and now for a feminine flirty look. Lyla will show you how to sew with sheer and silky fabrics to narrow hem edges, do appropriate seam treatments, and successfully add a buttonhole. Add sheer pieces to an existing pattern to give it a fresh new look.

#1059 Stash Buster Scrap Quilts

Marti Michell, Michell Marketing, Inc.

ROOM G, SHOWPLEX BLDG.

Thu. (#1059A), Sat. (#1059C) 9:30 pm

Fri. (#1059B), Sun. (#1059D) 1:30 pm

Have more fabric than you can use in two lifetimes? This is all about making beautiful quilts from fabrics you already own. Marti's trunk show is packed with tips about selecting fabrics, understanding and using color value effectively. Marti will share tricks and tools to make cutting and sewing scrap quilts easy and efficient.



#1060 One Pattern = A Variety of Garments

Sandra Miller, Cutting Corners

ROOM H, CENTENNIAL BLDG.

Thu. (#1060A), Sat. (#1060C) 11:30 am

It seems so obvious—yet we use a pattern the second time to make a garment just like the first one. Sandy decided to experiment. She'll show you simple changes she made to expand the possibilities of a pattern, achieving a variety of looks from sporty to dressy.



#1061 What Can I Do with All Those Leftovers

Sandra Miller, Cutting Corners

ROOM H, CENTENNIAL BLDG.

Fri. (#1061B), Sun. (#1061D) 10:30 am

We all have leftover fabric in our stash—too much to throw out but not enough to make another garment. Sandy will show

you many innovative ways to use your leftovers to cook up creative new garments.

#1062 Planes, Trains, Automobiles, or Sofas

Mary Mulari, Mary's Productions/BabyLock

EXPO RUNWAY, PAVILION 2ND FLOOR

Thu. (#1062A) 9:30 am

Fri. (#1062B) 9:30 am

ROOM E, SHOWPLEX BLDG.

Sun. (#1062D) 10:30 am

Prepare for comfort and style on the road or on your sofa. Mary's 2013 projects include jazzed-up sweatshirts, totes, reversible apron innovations, and new twists in repurposing. Be inspired by new embellishment ideas like applique pockets or a serger trimmed sweatshirt vest. See her newest project for Sewing with Nancy.



#1063 Contemporary Vintage

Laura Nash, Sew Chic Patterns

ROOM C, SHOWPLEX BLDG.

Fri. (#1063B), Sun. (#1063D) 1:30 pm

Do you love vintage patterns? Learn what to expect from these flea market finds: how they differ from modern patterns in terms of fit, sizing, technique, and pattern information. Get tips on how to achieve a contemporary look from your vintage patterns, or make your modern patterns feel more retro.



#1064 Prints Charming

Nancy Nix-Rice, Nancy Nix-Rice Wardrobe Consulting

ROOM C, SHOWPLEX BLDG.

Thu. (#1064A), Sat. (#1064C) 8:30 am

Find your "Handsome Prints" and sew happily ever after. A great print can anchor a totally coordinated and uniquely flattering wardrobe. Too many prints can leave you with a closet full of nothing to wear. Create a 12-point checklist to assure that you'll sew and wear the right prints.



#1065 Sew Skinny

Nancy Nix-Rice, Nancy Nix-Rice Wardrobe Consulting

ROOM C, SHOWPLEX BLDG.

Fri. (#1065B), Sun. (#1065D) 8:30 am

Lose those extra pounds – or look like you did. Choose pattern silhouettes for your body type—then adapt the details and color to focus on your assets. Learn one secret to visually lift the bust-line, flatten tummy and trim hips. Use accessory choices to slim and elongate your body.

#1066 Bra Basics

Monica O'Rourke Bravo, BravoBella

ROOM D, SHOWPLEX BLDG.

Thu. (#1066A), Sat. (#1066C) 1:30 pm

Fri. (#1066B), Sun. (#1066D) 11:30 am



Let's talk about the one thing that most women hate – BRAS! Learn the underlying concepts of what makes a well-fitting (and terrible-fitting!) bra. We will discuss how to make changes to a store-bought or custom-sewn bra to achieve the perfect fit!

#1067 Puckered Up Machine Embroidery

Pattie Otto, Great Copy Patterns

ROOM C, SHOWPLEX BLDG.

Thu. (#1067A), Sat. (#1067C) 4:30 pm

Fri. (#1067B), Sun. (#1067D) 10:30 am



Add texture to your embroidery with these simple, yet elegant embroidery techniques and the new steam and shrink stabilizers. Design selection, hooping and alignment techniques and fabrics will also be discussed as well as tips for garments, home dec, baby items and more!

#1068 Sew to Success: How to Never Have a Sewing Disaster

Pati Palmer, Palmer/Plutch

ROOM B, SHOWPLEX BLDG.

Thu. (#1068A), Sat. (#1068C) 2:30 pm

Fri. (#1068B), Sun. (#1068D) 9:30 am



How do you make a loser a winner? Pati will review tissue-fitting, fabric selection for items like a no-side seam pant or a pattern for knits, the importance of sewing techniques that affect fit such as the shape of a dart, and what makes a fabric easy to sew.

#1069 Making Memories with Fabric

Karen Pharr, Karen Pharr Studios

ROOM B, SHOWPLEX BLDG.

Thu. (#1069A), Sat. (#1069C) 10:30 am

Fri. (#1069B), Sun. (#1069D) 1:30 pm



Transfer photos to cotton, silk, organza, or other fabrics to make your own prints for quilts, wall hangings, pillows – the possibilities are endless. Learn which products work best—find free software to change your photos. Create sepia-tones of yesteryear, share a warm memory or present a sleek and modern look.

#1070 Perfect Piping: Not Just for Pillows!

Vaune Pierce, Vaune

ROOM C, SHOWPLEX BLDG.

Thu. (#1070A), Sat. (#1070C) 9:30 am



The difference between designer clothing and everything else can be summed up in one word...details! Add perfect piping on a collar, cuff, neckline or hem for a high end boutique look. Learn quick and easy techniques for making your own piping and how to apply them to your garments.

#1071 Boutique Buttons: A Designer Detail!

Vaune Pierce, Vaune

THEATER, PAVILION 2ND FLOOR

Thu. (#1071A), Sat. (#1071C) 3:30 pm

Fri. (#1071B), Sun. (#1071D) 2:30 pm

Buttons can give a garment added pizzazz—make it stunning and unique. But what type of button? What size? Learn different options and how to make your own. We will also go over the changes that must be made to your pattern to accommodate the buttons you choose! Limited to 30 people.

#1072 The Tee-Shirt Dress

Cecelia Podolak, Material Things

ROOM B, SHOWPLEX BLDG.

Thu. (#1072A), Sat. (#1072C) 11:30 am



Turn your favorite tee-shirt pattern into an easy-to-wear pullover dress. Using your hip and length measurements, add a skirt of any length to the pattern; then shape the waist and add design detail. This custom-designed, versatile addition to your wardrobe can be sewn in fabrics from sweater knits to jerseys.

#1073 Perfecting The Pull-On Pant

Cecelia Podolak, Material Things

ROOM B, SHOWPLEX BLDG.

Fri. (#1073B), Sun. (#1073D) 11:30 am

High-end designers are styling pull-on pants that are sophisticated while allowing comfort. It's easy to get this look with your favorite pant pattern. Get a smooth fit in crotch depth and circumference, and then add just enough ease to allow the pant to slide easily over the hips. Legs are slightly tapered for a slimming effect. Pockets are optional and an elasticized waist with a smooth front adds the finishing touch.

#1074 Shirt Tales

Janet Pray, Islander Sewing Systems

ROOM E, SHOWPLEX BLDG.

Thu. (#1074A), Sat. (#1074C) 9:30 am

Fri. (#1074B), Sun. (#1074D) 9:30 am



Make a shirt the professional way with Islander Sewing Systems. Techniques shown in this class include fine topstitching, how to create a lined back yoke without hand stitching, setting a two piece collar, attaching a sleeve and a cuff—all without pins or basting. These skills happily translate to other sewing projects.

#1075 Thread Therapy with Dr. Bob

Bob Purcell, Superior Threads

ROOM H, CENTENNIAL BLDG.

Thu. (#1075A), Sat. (#1075C) 12:30 pm



Bob teaches how to distinguish quality of all types of threads including regular and decorative. Learn what is fact and what is fiction. Learn the pros and cons of all major thread types, the importance of needle selection, and properly setting the tension for your sewing successes.

#1076 Fuss-Free Embellishment!

Sue Purdy, Sue's Studs & Laser-Cut Applique

ROOM H, CENTENNIAL BLDG.

Thu. (#1076A), Sat. (#1076C) 1:30 pm



I am surprised everybody doesn't spray paint fabric. It's so easy—who needs a class? With new stencils and products—no talent is required. See how layering iron-on metals and crystals can create extra interest, definition and texture. This is a fast, easy and talent free class.

#1077 Stylish Sweatshirt Jackets that FIT!

Londa Rohlfing, Londa's Creative Threads

ROOM B, SHOWPLEX BLDG.

Thu. (#1077A), Sat. (#1077C) 4:30 pm



Never again spend precious time on a sweatshirt jacket that ignores FIT! Understand stabilization issues and solutions for any knit garment, 'seeing' the sweatshirt as 'fabric and matching ribbing' and learn awesome creative embellishment techniques as you view numerous jackets.

#1078 Artistic Tops & Tees

Londa Rohlfing, Londa's Creative Threads

ROOM B, SHOWPLEX BLDG.

Fri. (#1078B), Sun. (#1078D) 10:30 am

After learning NEW, upscale construction techniques for edges, dive into Londa's designs and embellishment techniques for adding bias, flounces, ruffles, elastic shirring, collars, twists, drapes, texturizing and much more! Steps to create a twin set from a basic 'T' pattern are included as well.

#1079 Sew Like A Pro

Rosebud, Fashion Patterns by Coni

ROOM D, SHOWPLEX BLDG.

Thu. (#1079A), Sat. (#1079C) 2:30 pm



Hear the inside scoop for tips and techniques used in the garment industry to sew fast and achieve professional results. Learn how to produce smooth sleeve caps, which is the best foot for zippers & gathering; perfect topstitching; setting invisible & mock fly zippers, insert pockets, along with fail proof methods for working with slippery fabrics or fabrics with pile.

#1080 Bag A Jacket Lining By Machine

Rosebud, Fashion Patterns by Coni

ROOM D, SHOWPLEX BLDG.

Fri. (#1080B), Sun. (#1080D) 8:30 am

Lined jackets are more comfortable, easier to wear and will last much longer. The garment industry developed these methods to line a jacket and achieve professional results. Learn the necessary steps to completely assemble and insert a lining by machine with no hand sewing.

#1081 Quick Gifts From Your Scrap Stash

Cindy Rowell, Wonderfil Specialty Threads

ROOM G, SHOWPLEX BLDG.

Thu. (#1081A), Sat. (#1081C) 8:30 am

Fri. (#1081B), Sun. (#1081D) 2:30 pm



Think all you can make from your treasured fabric scraps is Scrap Quilts? This class is filled with OTHER creative ways to use your mountain of scraps. Cindy has some great gift ideas and she will provide some unique sewing tips and techniques that will save time and money.

#1082 Serger 911

Kathy Ruddy, Live Guides Inc.

ROOM G, SHOWPLEX BLDG.

Thu. (#1082A), Sat. (#1082C) 1:30 pm

Fri. (#1082B), Sun. (#1082D) 12:30 am



All serger owners and prospective serger owners need this information. Kathy will teach you how the serger works. You'll learn how to create a perfect balanced-tension control strip, a sequential tension formula that works on any serger and a five-minute pocket that can be added to any pattern.

#1083 Fitting Yourself by Yourself

Peggy Sagers, Silhouette Patterns

EXPO RUNWAY, PAVILION 2ND FLOOR

Thu. Only (#1083A) 12:30 pm



Feel like you need a fitting buddy? Come learn what is necessary to do the best fitting job by yourself, so you won't need a friend to pin you. Learn to recognize what

is wrong and fix it yourself! Peggy is THE expert on how to drape you by yourself.

#1084 Tissue Issues

Peggy Sagers, Silhouette Patterns

ROOM E, SHOWPLEX BLDG.

Thu. (#1084A), Sat. (#1084C) 4:30 pm

You have heard what your fitting problems are—you can repeat them in your sleep... but how do you easily change the tissue to fix the problems you can see. Come learn the relationship between the physical cloth and the tissue so you can learn to transfer your "fit issues" without reinventing the wheel.

#1085 Pants That Fit

Peggy Sagers, Silhouette Patterns

EXPO RUNWAY, PAVILION 2ND FLOOR

Fri. Only (#1085B) 1:30 pm

Have you spent your life getting those pants to be perfect? Well, this is the last pants class you will ever have to attend. Come learn how to fix those baggy butts, big legs, pulling pockets and whatever else is wrong. No gimmicks, just important information.

#1086 Floor Mats are Easy

Lynnette Sandbloom

ROOM B, SHOWPLEX BLDG.

Thu. (#1086A), Sat. (#1086C) 3:30

Fri. (#1086B), Sun. (#1086D) 2:30 pm



A colorful fabric floor mat could be the perfect finishing touch for any room—and it's the ultimate fabric-stash-buster! Using this process, you can create durable floor mats of any size or shape that make great accents and wonderful gifts. Incorporate ribbons, Rick Rack, embroidery or permanent markers to personalize.

#1087 New Tee Necklines

Emma Seabrooke, SewkeysE by Emma Seabrooke

ROOM H, CENTENNIAL BLDG.

Thu. (#1087A), Sat. (#1087C) 4:30 pm



Tired of plain ordinary tee shirts? Discouraged by new shirts that are too low cut, or V-necks that don't look good? How about a basket-weave or sunburst neckline? A pleat and re-pleat neckline, or a picot neckline? Learn fitting points, great design details and put some zing into those tees.

#1088 Add Stay Tapes to Make Knits Look Professional

Emma Seabrooke, SewkeysE by Emma Seabrooke

ROOM L, VIP TENT

Fri. (#1088B), Sun. (#1088D) 11:30 am

The little things you do when sewing knits can add up to a very big difference in how professional your garment looks. Make stronger shoulder seams; straight side seams, and non-warped hems on stretchy fabrics. Work with stretch laces, tiny pleated fabric, slinky, sweater knits, illusions and more.

#1089 Needle Felted Wonders

Laurie Sharp, Quarry Publications

THEATER, PAVILION 2ND FLOOR

Thu. (#1089A), Sat. (#1089C) 12:30 pm

Fri. (#1089B), Sun. (#1089D) 12:30 pm



Learn the basic techniques of 3D needle felting. You will practice your newly learned skills and techniques to create a small creature to take home with you. Kit fee \$10. Includes two felting needles, foam pad, and wool roving. Limited to 30 people.

#1090 Machine Embroidery Embellishment

Lisa Shaw, Sew-Bubbles

ROOM D, SHOWPLEX BLDG.

Thu. (#1090A), Sat. (#1090C) 12:30 pm

Fri. (#1090B) 4:30 pm



Use customizing software to create unique machine embroidery designs without spending hours on the software. Create embellished buttonholes, coordinating designs, 3D and dimensional surface embellishment—using simple steps in your software. Come whether you own software OR you are new to machine embroidery.

#1091 Photos on Fabric

Mike & Vicki Shetter, Soft Scrap

ROOM L, VIP TENT

Thu. (#1091A), Sat. (#1091C) 1:30 pm



Photos tell a story. See how to use Microsoft Word to position your pictures on a page – with words—before printing on fabric. Learn to make quilt labels combining words, photos, drawings, clip art and colored backgrounds; add a key to the back of your photo quilts to document a person, place or event.

#1092 Jewelry from Your Stash

Robyn Spady, Spady Studios/ Embellishment Village

ROOM C, SHOWPLEX BLDG.

Fri. (#1092B), Sun. (#1092D) 12:30 pm



Do you have leftover fabric or yarn that is too fabulous to throw out? Then you can design and create jewelry to complement your own wardrobe or sell in boutiques or on Etsy. Learn some simple techniques to transform fiber and fabric into extraordinary jewelry.

#1093 Successful Paper Piecing

Connie Spurlock, Sew Wonderful Dreams

ROOM C, SHOWPLEX BLDG.

Thu. (#1093A), Sat. (#1093C) 12:30 pm

Fri. (#1093B), Sun. (#1093D) 11:30 am



Trouble getting to the point in your quilt piecing? Paper piecing is easy, precise and variable (you can enlarge or reduce the blocks). Most importantly, you get perfect points every time. We supply pattern, fabric, and inspiration. Bring scissors and glue stick for this hands-on experience.

#1094 Creating Texture the Easy Way!

Annie Unrein, ByAnnie.com/Superior Threads

ROOM H, CENTENNIAL BLDG.

Thu. (#1094A), Sat. (#1094C) 2:30 pm



Experience the fun of creating texture on fabric using Texture Magic™ (a steam-activated shrinking fabric). Learn to obtain different effects by using various stitches, threads, fabrics, and battings. The uses for Texture Magic™ are endless and sure to excite!

#1095 Set a Pretty Table

Annie Unrein, ByAnnie.com/Superior Threads

ROOM H, CENTENNIAL BLDG.

Fri. (#1095B), Sun. (#1095D) 2:30 pm

Placemats are fun and easy to make for any occasion and are an affordable way to add personality to your dining area. Learn to make placemats in several styles for decorating or for gifts. Using Soft and Stable™ instead of batting makes beautiful, sturdy placemats that will wear beautifully.

#1096 Making Resin Buttons, Embellishments, & Closures

Fran Valera, Little Windows Brilliant Resin

ROOM G, SHOWPLEX BLDG.

Thu. (#1096A), Sat. (#1096C) 11:30 am

ROOM H, CENTENNIAL BLDG.

Fri. (#1096B), Sun. (#1096D) 11:30 am



Fran will show you how to use this safe, easy and versatile resin to turn your fabrics, fibers, lace, and photos into unique embellishments for any garment or accessory. Learn how to make these lightweight, waterproof pieces for yourself, for gifts, or to sell!

#1097 Let's Dance!

Katrina Walker, Katrina Walker/SVP Worldwide

ROOM E, SHOWPLEX BLDG.

Thu. (#1097A), Sat. (#1097C) 11:30 am,



Teach your sewing machine some fancy new steps by using your specialty feet. Create seams, trims and techniques that are both useful and decorative. Remember the Ruffler? How about eyelet plates? How about those blind hems? Let's get those specialty presser feet dancing! Appropriate for all sewing machine brands.

#1098 Make Your Fabric Work for You

Katrina Walker, Katrina Walker/SVP Worldwide

ROOM E, SHOWPLEX BLDG.

Fri. (#1098B), Sun. (#1098D) 2:30 pm

Ever made a beautiful garment that just didn't work because the fabric was wrong for the design? Katrina will share strategies for interpreting both fabric performance and pattern design to create a successful combination. Learn a series of simple tests for compatibility and fabric performance-enhancing tricks.

#1099 Zipper Embellishments for Dolls

Nadeen Ward, Dolls R Sew Fun/Ghee's

ROOM H, CENTENNIAL BLDG.

Fri. Only (#1099B) 3:30 pm



Learn the techniques to create "dolly" size zipper embellishments for your 18" doll. Nadeen will show you other clever zipper placements to jazz up your doll's clothes. You'll love the ideas so much; you'll want to do them for yourself!

#1101 An Art Quilt Made in the Garden of Eden

Laura Wasilowski, Artfabrik Inc./Janome

ROOM E, SHOWPLEX BLDG.

Thu. (#1101A), Sat. (#1101C) 1:30 pm



You'll want this delightful garden quilt full of bright color and joyous flowers for display in your home. Easy to assemble fusing instructions make this a quick project. Learn the step-by-step fused construction process and tips on adding hand embroidery to your fun fused art quilt.

#1102 Spring Leaves, A Quick Art Quilt

Laura Wasilowski, Artfabrik Inc./Janome

ROOM E, SHOWPLEX BLDG.

Fri. Only (#1102B) 10:30 am

Festive leaves floating through the air cheer your soul. Make this gentle leaf quilt with fused fabrics, an easy pattern transfer process, and decorative rotary cutter blades. It's a simple design with lots of variation and options for embellishment and personal design.

#1103 Successful Quilt Piecing

Mech Watne, PerfectBorders.com

THEATER, PAVILION 2ND FLOOR

Thu. (#1103A), Sat. (#1103C) 11:30 am

Fri. (#1103B), Sun. (#1103D) 1:30 pm



Set yourself up for success!! Mech will review piecing and pressing techniques that help make quilting easier and more beautiful, whether you plan to do the quilting yourself or have it done. A great class for beginners. Limited to 30 people.

#1104 Sew Knits with Confidence

Nancy Zieman, Nancy Zieman Productions, LLC

ROOM L, VIP TENT

Thu. (#1104A), Sat. (#1104C) 9:30 am

Fri. (#1104B) 10:30 am



Knit fashions are in vogue and Nancy provides up-to-the-minute advice and tips. Learn smart pattern choices, great tools, and easy techniques for seams, elastics, necklines, hems, zippers, embellishments, and lots more. Also some "easy peasy" techniques to add finishing touches to knits—ruffles, flounces, embroidery, floral embellishments, and more.



Two Needle Sessions

| | 8:30 am | 10:30 am | 12:30 pm | 2:30 pm |
|---------------------------------------------------|---------------------------------------------------------------------------------|----------------------------------------------------------------|--------------------------------------------------------------------------------------|--------------------------------------------------------------------------------------|
| Thursday Showplex Room F | #2004 How to Make Perfect Roman Shades <i>Pam Damour</i> | #2013 Machine Beading <i>Cindy Rowell</i> | #2015 Nancy's 30 Favorite Sewing & Quilting Techniques <i>Nancy Zieman</i> | #2003 The Quilt Improvement Show <i>Eleanor Burns</i> |
| Friday Showplex Room F | #2006 Designer Finishes with Your Serger <i>Candice Jewett</i> | #2012 Fearless Fabric Painting <i>Karen Pharr</i> | #2002 Introduction to Draping <i>Jan Bones</i> | #2005 Fast, Faster, Fastest Quilting <i>Sue Hausmann</i> |
| Saturday Showplex Room F | #2008 SEW NEWS – Live! <i>Debra Justice</i> | #2010 Putting in a Zip! <i>Linda McGehee</i> | #2007 The Etsy Sellers Handbook <i>Angela Jorgenson</i> | #2011 Fresh Gifts with Sensational Stitching, and Style <i>Mary Mulari</i> |
| Sunday Showplex Room F | #2009 Sensational Sergers <i>Pamela Leggett</i> | #2014 Four Steps to Perfect Pants <i>Kathy Ruddy</i> | No Class | No Class |
| Sunday Expo Runway (Pavilion 2nd Floor) | #2001 Fast Fused Quilts <i>Frieda Anderson & Laura Wasilowski</i> | Sew News Blogger Event | No Class | No Class |



Two Needle Sessions

These classes will be presented in lecture-demo format. Each class will teach a complete project or a specific technique—and an extensive, educational handout will be part of the class.

⊕ 1 ½ hours \$20 (pre-registration required)

#2001 Fun Fast Fusing

Frieda Anderson & Laura Wasilowski, Janome

EXPO RUNWAY, 2ND FLOOR PAVILION

Sun. (#2001D) 8:30 – 10:00 am

Laura and Frieda will show you how to make fun, fast, fused art quilts. They will demonstrate the step-by-step process of creating the artwork from start to finish. You'll learn tips on working with fused fabric, building colorful quilt tops, machine quilting, adding hand embroidery, and how to finish the quilts with a variety of



#2002 Introduction to Draping

Jan Bones, Lingerie Secrets

ROOM F, SHOWPLEX

Fri. (#2002B) 12:30 – 2:00 pm



Draping is the art of creating clothing on a body or a dress form, no pattern required. Since our bodies are round, curved, flat and angled all at the same time draping techniques allow you fit fabric to the body. Jan will demonstrate draping on a real person so you will see the draping technique live in the classroom. You will leave with complete, step-by-step directions and diagrams.

#2003 The Quilt Improvement Show with Tool Gal Eleanor Burns

Eleanor Burns, Quilt In A Day

ROOM F, SHOWPLEX

Thu. (#2003A) 2:30 – 4:00 pm



With years of experience and an impressive tool belt of quilting magic, Eleanor will once again bring her unique and humorous approach to the quilting stage. She will share insights into specific

techniques she has pioneered aimed to help every quilter—from the beginner to the advanced. The long list of techniques discussed and quilts displayed will leave your head whirling.

#2004 How to Make Perfect Roman Shades

Pam Damour, The Decorating Diva

ROOM F, SHOWPLEX

Thu. (#2004A) 8:30 – 10:00 am



Roman shades come in all sizes and shapes, as well as being fun to make! Fabric shades have always been a staple in decorating because they are decorative and functional. You will learn how to make a roman shade from start to finish. Pam will teach you the professional techniques on how to measure for shades, calculate yardage, proper cutting and piecing. Learn the proper hardware to use to install and dress shades. Pam will show you a variety of shade styles, and decorative options for a beautiful home.

#2005 Fast, Faster, Fastest Quilting

*Sue Hausmann, SVP Worldwide/
Husqvarna Viking Sewing Machines*

ROOM F, SHOWPLEX

Fri. (#2005B) 2:30 – 4:00 pm



Sue shares vintage quilts to inspire you and teaches you to create quilted projects stitching vintage quilting styles the “high tech” way. Her trunk show of quilted projects, quilts, clothing and crafts will show something for everyone. See on camera how to stitch fast, faster and the fastest appliqué, redwork, crazy patch, embroidery, free motion, tie quilting plus “sew” much more. Learn fast, faster and the fastest way to bind and finish quilts. Sue teaches new tips and techniques to make quilting easier and ways to help you get it all done.

#2006 Designer Finishes with Your Serger

Candice Jewett, Quality Sewing & Vacuum

ROOM F, SHOWPLEX

Fri. (#2006B) 8:30 – 10:00 am



We all think of a serger as a machine that edges fabric but designers know it does so much more. If you have ever wondered where and why you would use a serger instead of a sewing machine, this class is for you. Endless industry tips and techniques will be demonstrated for zippers, Chinese knot closures, serged prairie points, bridging stitches and more. Candice will teach you a variety of industry techniques that will take your garments, home dec and heirloom sewing to a professional designer level.

#2007 The Etsy Sellers Handbook

Angela Jorgenson, Quilting From the Heartland

ROOM F, SHOWPLEX

Sat. (#2007C) 12:30 – 2:00 pm



“You should sell these on Etsy!” If you’ve heard this or been curious about Etsy, the online marketplace for handcrafted items, DO NOT MISS THIS CLASS. It began as creative ideas for Angela’s daughter’s wedding and turned into a full time home business. Angela created and sold over \$100,000 of handmade merchandise on Etsy in her first year. Learn the basics of setting up your own Etsy store, how to choose a name, price your merchandise, handle shipping, etc.

#2008 SEW NEWS—Live!

Debra Justice, Labours of Love

ROOM F, SHOWPLEX

Sat. (#2008C) 8:30 – 10:00 am



The Footwork column comes to life in Puyallup. Debra will demonstrate “live” a variety of presser feet she has featured in *Sew News* magazine. See up close how the roller, Teflon and walking foot tackle difficult and “sticky” fabrics. Debra will demo the darning foot; stippling, fixing a gaping hole in lace and rips. Learn to reverse applique with the open toe foot and how to install an invisible zipper with no pucker, matching the pattern perfectly. The button foot is amazing to attach a variety of unlikely closures and embellishments. See the braiding foot attach pearls, sequins and more, while the roll hemmer stitches to perfection, even on corners. The bias binder, fringe and flower stitch foot will also be featured.

#2009 Sensational Sergers

*Pamela Leggett, Pamela’s Patterns/
Palmer/Pletsch*

ROOM F, SHOWPLEX

Sun. (#2009D) 8:30 – 10:00 am



A great class for serger owners old and new! Learn what your serger can do for you besides just finish an edge. Maintenance, threading, tensions, differential feed, rolled hem, flatlocking, lace, and more will be demonstrated. Plus you will see a vast array of samples to inspire future projects. You will also get the latest scoop on coverstitching!

#2010 Putting In a Zip!

Linda McGehee, Ghee’s

ROOM F, SHOWPLEX

Sat. (#2010C) 10:30 am – 12:00 noon



The basic zipper can be easily installed in a variety of ways depending upon the project. You’ll marvel at the ease of inserting zippers in garments, pockets, pillows, and handbags. Watch Linda install five different zipper applications. Learn how to “fix a zipper” to fit the length you need and put a zipper back together

when the slider comes off. Let the zipper make a statement on your next project by using decorative zippers. Whether for garments or bags, insert zippers trouble free, the easy way.

#2011 Fresh Gifts with Sensational Stitching & Style

Mary Mulari, Mary's Productions/Babylock

ROOM F, SHOWPLEX

Sat. (#2011C) 2:30 – 4:00 pm



Do you give away most of what you sew? Do you prefer useful gifts that are clever & classy? Then it's time to collect a boatload of inspiration from Mary's latest collection of travel accessories, aprons (most popular gift at wedding showers), embroidery, etc. You'll see how simple stitching adds style to ready-mades and how embroidery personalizes ordinary gifts. There will be long-time favorite gifts with new appeal and a handout of five gift projects with instructions and patterns.

#2012 Fearless Fabric Painting

Karen Pharr, Karen Pharr Studios

ROOM F, SHOWPLEX

Fri. (#2012B) 10:30 am – 12:00 noon



Want to learn to create your own fabric? Don't have room to set up for dyeing? Learn to create the color and designs on fabric with textile paints so you can have what you want when you want it with simple easy techniques. With water based textile paints you can create fabrics that are beautiful, soft and colorfast. Learn batik, printing, and creating perfect fabrics in cottons, silks, or blends. Create perfect fabrics for use in quilts, scarves, and any of your fashion needs.

#2013 Machine Beading

Cindy Rowell, Wonderfil Specialty Threads

ROOM F, SHOWPLEX

Thu. (#2013A) 10:30 am – 12:00 noon



Although it sounds impossible to do bead work using your sewing machine, this exciting machine beading technique will show you another creative use for your sewing machine. Machine beading can be done using any home sewing machine and requires no special feet or attachments. In this class you will learn how to choose quality (washable) beads to use on fabric, what threads to use for attaching beads, as well as how to use specialty threads to add depth and dimension to any beaded project.

#2014 Four Steps to Perfect Pants

Kathy Ruddy, Live Guides, Inc.

ROOM F, SHOWPLEX

Sun. (#2014D) 10:30 – 12:00 noon



Pattern, Fit, Fabric and Technique, Kathy has all of the answers and YEARS of hands-on experience developing them. Using selected models from the audience Kathy will demonstrate how to measure and adjust the crotch curve, change to the leg style that suits the silhouette and then teach easy construction techniques to sew pair after pair in as little as 30 minutes.

#2015 Nancy's 30 Favorite Sewing & Quilting Techniques

Nancy Zieman, Nancy Zieman Productions, LLC

ROOM F, SHOWPLEX

Thu. (#2015A) 12:30 – 2:00 pm



Don't miss this lecture featuring 30, yes, 30 tips to celebrate 30 years of Sewing With Nancy! Garnered over three decades, learn Nancy's favorite cutting, piecing, layering and binding tips. You'll ask, why didn't I think of that?



Three Needle Sessions (Thursday–Sunday)

Baby Lock Classroom (Expo Hall)

| | 8:00 am | 11:00 am | 2:00 pm |
|-----------------|---------------------------------------------------------|---------------------------------------------------------|-----------------------------------------------|
| Thursday | #3027 Three Block Table Runner <i>Candice Jewett</i> | #3047 Suzanne Wrap <i>Emma Seabrooke</i> | #3055 Cosmetic Serger-y <i>Gail Yellen</i> |
| Friday | #3056 Cover Hem Workshop <i>Gail Yellen</i> | #3027 Three Block Table Runner <i>Candice Jewett</i> | #3047 Suzanne Wrap <i>Emma Seabrooke</i> |
| Saturday | #3027 Three Block Table Runner <i>Candice Jewett</i> | #3055 Cosmetic Serger-y <i>Gail Yellen</i> | #3048 Nancy Cardigan <i>Emma Seabrooke</i> |

Bernina Classroom (Expo Hall)

| | | | |
|-----------------|-----------------------------------------------------------|-----------------------------------------------------------------------------------|-----------------------------------------------------------------------------------|
| Thursday | #3031 Sheer Ribbon Illusions <i>Libby Lehman</i> | #3031 Sheer Ribbon Illusions <i>Libby Lehman</i> | #3003 Finishing Touches for Garments <i>Ryliss Bod</i> |
| Friday | #3003 Finishing Touches for Garments <i>Ryliss Bod</i> | #3040 To the Rescue! Super Hero Cape for Boys and Girls <i>Dodi Poulsen</i> | #3040 To the Rescue! Super Hero Cape for Boys and Girls <i>Dodi Poulsen</i> |
| Saturday | #3031 Sheer Ribbon Illusions <i>Libby Lehman</i> | #3023 Sprocket Pillows <i>Allison Harris</i> | #3023 Sprocket Pillows <i>Allison Harris</i> |

Brother Classroom (Expo Hall)

| | | | |
|-----------------|------------------------------------------------------------------------------|--------------------------------------------------------------|-------------------------------------------------|
| Thursday | #3004 Smoothie Panties <i>Jan Bones</i> | #3024 DIY Magic T-Shirt <i>Simon Haskins</i> | #3054 Leap Frogs Umbrella <i>Dini Yan</i> |
| Friday | #3054 Leap Frogs Umbrella <i>Dini Yan</i> | #3049 Machine Embroidered Task-it Bag <i>Lisa Shaw</i> | #3041 To Infinity & Beyond <i>Janet Pray</i> |
| Saturday | #3030 Collars & Lapels: A New Twist On Tailoring <i>Pamela Leggett</i> | #3005 The Front Closing Bra <i>Jan Bones</i> | #3024 DIY Magic T-Shirt <i>Simon Haskins</i> |

Janome Classroom (State Patrol Building, 2nd Floor)

| | | | |
|-----------------|--------------------------------------------------------|-------------------------------------------------------------------------|------------------------------------------------------|
| Thursday | #3006 Pendleton Picnic Blanket <i>Stacy Brisbee</i> | #3010 Sewing Circle Kit <i>Mary Carollo</i> | #3012 Modern Madeira Towel <i>Kandi Christian</i> |
| Friday | #3008 Learn to Use a Ruffler <i>Maddie Bushman</i> | #3026 Easy to Master Professional Techniques <i>Mickey Hudson</i> | #3009 Pineapple Delight <i>Maddie Bushman</i> |
| Saturday | #3011 Scrappy Pineapple Block <i>Mary Carollo</i> | #3010 Sewing Circle Kit <i>Mary Carollo</i> | #3018 Sixty Degrees of Floral Fun <i>Sam Fung</i> |

Pfaff Classroom (Expo Hall)

| | 8:00 am | 11:00 am | 2:00 pm |
|-----------------|--------------------------------------------------------------|----------------------------------------------------------------------|-------------------------------------------------------|
| Thursday | #3022 Putting on the Glitz Clutch <i>Darlene Guillory</i> | #3020 Thread Painting on Printed Fabrics <i>Nancy Goldsworthy</i> | #3034 Zipper & Ribbon Tote <i>Mary Mulari</i> |
| Friday | #3051 Sew Constructive <i>Katrina Walker</i> | #3033 Tumbling Leaves Pashmina <i>Cindy Losekamp</i> | #3028 Machine Embroidery on Wood <i>Lana Jones</i> |
| Saturday | #3034 Zipper & Ribbon Tote <i>Mary Mulari</i> | #3021 Double Wedding Ring Table Runner <i>Nancy Goldsworthy</i> | #3051 Sew Constructive <i>Katrina Walker</i> |

Viking Classroom (Showplex)

| | | | |
|-----------------|------------------------------------------------------------|-------------------------------------------------------------------|------------------------------------------------------------|
| Thursday | #3029 Classy & Clever Computer Case <i>Gail Kellogg</i> | #3029 Classy & Clever Computer Case Sleeve <i>Gail Kellogg</i> | #3052 Serger Strands Necklace <i>Nadeen Ward</i> |
| Friday | #3052 Serger Strands Necklace <i>Nadeen Ward</i> | #3015 Easy Serger Pillow <i>Pam Damour</i> | #3029 Classy & Clever Computer Case <i>Gail Kellogg</i> |
| Saturday | #3002 The Magic Purse <i>Pam Bocko</i> | #3039 Snap to It! Bag <i>Pine Needle Educator</i> | #3014 Scrappy Charm Pack Quilts <i>Michele Crawford</i> |

Room J (Centennial Pavilion)

| | | | |
|-----------------|------------------------------------------------------------------------------|-----------------------------------------------------------------------|----------------------------------------------------|
| Thursday | #3042 Drafting Skirts With Style <i>Rosebud</i> | #3017 Fabulous Silk Shibori Ribbon Adornments <i>Glennis Dolce</i> | #3043 'Embeadery' On Fabric <i>Cindy Rowell</i> |
| Friday | #3007 Pendleton Selvage Crochet Rug <i>Stacy Brisbee</i> | #3044 No Slip Pedal for Sewing Machines <i>Lynnette Sandbloom</i> | #3001 Field Poppies <i>Frieda Anderson</i> |
| Saturday | #3045 Over-Dyeing Kimono Silks & Shibori Techniques <i>Becky Scellato</i> | #3038 Elegant Embroidery <i>Vaune Pierce</i> | #3043 'Embeadery' On Fabric <i>Cindy Rowell</i> |
| Sunday | #3007 Pendleton Selvage Crochet Rug <i>Stacy Brisbee</i> | #3046 Lotus Blossom Table Runner <i>Becky Scellato</i> | No Class |

Room K (State Patrol Building, 1st Floor)

| | | | |
|-----------------|--------------------------------------------------------------------------------|--------------------------------------------------------------------------|-------------------------------------------------------|
| Thursday | #3053 Beginning Silk Ribbon Embroidery <i>Teresa White</i> | #3032 Hollow Crystal Button Bead <i>Amy Loh-Kupser</i> | #3037 Redwork for Today <i>Karen Pharr</i> |
| Friday | #3035 Lacy Bead Crochet Necklace and Bracelet <i>Mary Libby Neiman</i> | #3019 Ribbon Collage Postcard <i>Helen Gibb</i> | #3036 Introduction to Crochet <i>Pattie Otto</i> |
| Saturday | #3016 Beginner Knitting <i>Pam Damour</i> | #3025 Organza Magic ~ Silk Rose-Making Technique <i>Mary Jo Hiney</i> | #3050 Make Your Own Cord & Trim <i>Robyn Spady</i> |
| Sunday | #3013 Grading--Making Your Pattern Larger or Smaller <i>Connie Crawford</i> | #3053 Beginning Silk Ribbon Embroidery <i>Teresa White</i> | No Class |



Three Needle Sessions

Students signing up for this class expect to learn a sewing and/or embroidering technique through a hands-on learning experience. Some classes may have an additional materials charge.

⊕ 2½ hours \$30 (pre-registration required)

#3001 Field Poppies

Frieda Anderson, *Friestyle Designs/Janome*

ROOM J, CENTENNIAL BLDG.

Fri. (#3001B) 2:00 – 4:30 pm

Inspired by the glory of Frieda's garden, this project provides the perfect setting for the use of detailed cutting, fusing and color combinations to create drama and whimsy together in a single piece. Discover the newest techniques and tools for creating this raw edge beauty as you complete the colorful Field Poppies wall hanging.

\$25 KIT FEE INCLUDES: ½ yard of Frieda's multi colored, hand dyed pre-fused cotton fabric and pattern

STUDENT SUPPLIES: Rotary mat, rotary cutter, ruler, small sharp scissors, Sharpie extra fine marker



#3002 The Magic Purse

Pam Bocko, *Pieceful Designs*

VIKING CLASSROOM, SHOWPLEX BLDG.

Saturday (#3002C) 8:00 – 10:30 am

This little purse is a sewing delight. A wonderful project for all sewing abilities, beginner to experienced. You will learn basic cutting and sewing techniques plus the more advanced skills of free motion quilting and the use of Texture Magic. Finish this project in class to take home to give as a gift or use as a gift bag.

\$15 KIT FEE INCLUDES: Original Pieceful Designs Pattern-"Flower Purse", all required fabric, Texture Magic, cording, beads, thread (complete kit to make project)

STUDENT SUPPLIES: Basic sewing supplies, safety pin, pencil, paper



#3003 Finishing Touches for Garments

Ryliss Bod, *Bernina of America*

BERNINA CLASSROOM, EXPO HALL

Thursday (#3003A) 2:00 – 4:30 pm, Friday (#3003B) 8:00 – 10:30 am

Hemming * Topstitching * Buttonholes. Hemming is one way of saving money and making money. Learn how much hem allowance you need; how to blind stitch with a sewing machine; stitch a rolled hem; hem your jeans like ready-to-wear and



other hem finishes. Do you avoid garments with buttonholes? Know the tricks for topstitching? Learn the options available.

\$20 KIT FEE INCLUDES: Fabric, buttons, thread

STUDENT SUPPLIES: Scissors

#3004 Smoothie Panties

Jan Bones, *Lingerie Secrets*

BROTHER CLASSROOM, EXPO HALL

Thu. (#3004A) 8:00 – 10:30 am



Create a great pair of comfortable panties you will make again and again: how to select the correct size, properly sew seams, and measure and sew elastic accurately. The "Smoothie" Pantie has a good fit and the two-way stretch fabric feels great. Use these techniques for swim wear or dance wear.

\$25 KIT FEE INCLUDES: Lingerie Secrets "Smoothie Pantie"

Pattern, elastic, pre-cut pantie in 96% Cotton/4% Lycra fabric with 100% Cotton knit used for the crotch. Once you received your ticket for class, please email Jan at jbones3@shaw.ca with your hip size by Jan 25, 2013.

STUDENT SUPPLIES: General sewing supplies, good quality white and beige polyester thread, notebook

#3005 The Front Closing Bra

Jan Bones, *Lingerie Secrets*

BROTHER CLASSROOM, EXPO HALL

Sat. (#3005C) 11:00 am – 1:30 pm



You will complete your bra in class! Learn proper size selection, fitting information and construction methods, including how to deal with elastic and hooks. Learn how to combine different fabrics for your next Sports Bra. The techniques taught in this class apply to swimwear, skating costumes, etc. Email Jan with your bra and cup size once you have received your class ticket in the mail: jbones3@shaw.ca by Jan. 25th, 2013.

\$25 KIT FEE INCLUDES: Pre-cut sports bra, elastics, hook closures and Jan's Lingerie Secrets "Front Closing Sports Bra" Pattern (sizes S–XL in four cup sizes A, B, C, & D)

STUDENT SUPPLIES: Ball point sewing machine needles, white & beige polyester thread, tape measure, a notebook, pen. Please have the kit fee in an envelope with your name on the outside.

#3006 Pendleton Picnic Blanket

Stacy Brisbee, *Pendleton Woolen Mill*

JANOME CLASSROOM, STATE PATROL BLDG., (2ND FLOOR)

Thu., (#3006A) 8:00 – 10:30 am



Enjoy the outdoors with your own Pendleton Picnic Blanket. Stash the blanket in your car and you're ready for outdoor fun in any climate. Made of 100% Virgin Wool on one side and Nylon on the reverse, the blanket rolls up and has a sewn-in carrying handle for convenient storage.

\$25 KIT FEE INCLUDES: 1.5 yds. Pendleton blanket weight fabric, 1.5 yds. nylon backing, 1.5 yds. 1" webbing, two 1" silver buckles

STUDENT SUPPLIES: Scissors, pins, sewing thread

#3007 Pendleton Selvage Crochet Rug

Stacy Brisbee, Pendleton Woolen Mill Store

ROOM J, CENTENNIAL BLDG.

Fri. (#3007B), Sun. (#3007D) 8:00 – 10:30 am



Our most popular class! Reduce-Reuse-Recycle with this fun and easy crochet rug brought to you by Pendleton Woolen Mills. Turn wool selvages into a cozy rug with a big crochet hook & a supply of our Pendleton fuzzy wool selvages. Make a rug in the time it takes to watch a movie. No experience necessary.

\$20 KIT FEE INCLUDES: Five lbs. Pendleton Wool selvages, size Q crochet hook

STUDENT SUPPLIES: Scissors, yarn needle

#3008 Learn to Use a Ruffler

Maddie Bushman, Janome

JANOME CLASSROOM, STATE PATROL BLDG., (2ND FLOOR)

Fri., (#3008B) 8:00 – 10:30 am



The ruffler is one of the best tools you can have in your sewing room. It pleats or gathers while attaching to a flat fabric in one step. It can be used for fabric, ribbon, lace and more. Come and learn the many decorative touches that can be created with this marvelous tool for garment sewing to quilting and anything in-between.

\$4 KIT FEE INCLUDES: An assortment of fabrics, ribbons, and lace to learn techniques

STUDENT SUPPLIES: Basic sewing supplies

#3009 Pineapple Delight Wall Hanging

Maddie Bushman, Janome

JANOME CLASSROOM, STATE PATROL BLDG., (2ND FLOOR)

Fri. (#3009B) 2:00 – 4:30 pm



By the end of this class you will have learned free motion with the echo quilting foot using satin stitching with metallic thread. You will also have learned how to self-bind to be able to insert a dowel for hanging. Notions and buttons may be added as embellishment after class.

\$15 KIT FEE INCLUDES: Panel, 20" x 20" batting, 20" x 20" approx. backing, pre-wound white bobbin, pre-wound bobbin to match thread for needle, red tip needle (to be used with gold metallic thread), blue tip needle (to be used for ordinary sewing)

STUDENT SUPPLIES: Madeira metallic thread Col251 No. 40, 200m, quilting gloves (optional)

#3010 Sewing Circle Kit

Mary Carollo, Janome

JANOME CLASSROOM, STATE PATROL BLDG., (2ND FLOOR)

Thu. (#3010A), Sat. (#3010C), 11:00 am – 1:30 pm



Keep your hand-sewing tools close with this compact sewing kit. In this technique driven project, you will learn how to use the circle sewing attachment and the binding foot to apply

purchased binding to the edge of the circle. Great gifts for all of your sewing and quilting friends!

\$5 KIT FEE INCLUDES: All materials to complete the project

STUDENT SUPPLIES: General sewing supplies, rotary mat & cutter, small curved scissors

#3011 Scrappy Pineapple Block

Mary Carollo, Janome

JANOME CLASSROOM, STATE PATROL BLDG., (2ND FLOOR)

Sat. (#3011C) 8:00 – 10:30 am



This fast and easy 12" quilt block will make your scrap stash and jelly rolls disappear before your eyes! In the class we will complete 4 to 6 blocks depending on your speed and skill level. The student supply list is material needed for a single block, so plan the quilt size you would like! Use this technique to make in similar colors or very scrappy—it all works!

\$0 KIT FEE INCLUDES: Thread will be provided

STUDENT SUPPLIES: For each 12" block: five 4.5" solid (this can be a light color or dark; my photo is off-white), two 2.5" x 4.5" rectangles, four 2.5" x 8.5" rectangles, two 2.5" x 12.5" rectangles.

#3012 Modern Madeira Towel

Kandi Christian, Sew Timeless

JANOME CLASSROOM, STATE PATROL BLDG., (2ND FLOOR)

Thu. (#3012A) 2:00 – 4:30 pm



Towels made with a double Madeira Scalloped hem make a wonderful gift. But what if the person doesn't like white with ecru? In class, make this gorgeous towel using colored linen and colored thread instead of white-on-white or ecru-on-white (traditional). You'll also have test linen to "play" with different colors and see the effect color has on the technique.

\$15 KIT FEE INCLUDES: White linen, colored linen, colored thread, specialty needles, stabilizer, wash-away basting thread.

STUDENT SUPPLIES: Basic sewing supplies, white thread, scissors, ruler

#3013 Grading~Making Your Pattern Larger or Smaller

Connie Crawford, Fashion Patterns by Coni

ROOM K, STATE PATROL BLDG. (1ST FLOOR)

Sun. (#3013D) 8:00 – 10:30 am



Learn fashion industry grading techniques. Connie will illustrate the theory and method of grading and how to select different grade for different sizes and people. Using a specially made grading ruler, each attendee will be given a basic pattern and grading ruler to grade in a step-by-step method. This process will help those who have always wanted to change a size but were afraid.

\$25 KIT FEE INCLUDES: Grading Workbook and Grading Ruler

STUDENT SUPPLIES: Painters masking tape, sharp pencil and pen.

#3014 Scrappy Charm Pack Quilts

Michele Crawford, *Flower Box Quilts*

VIKING CLASSROOM, SHOWPLEX BLDG.

Sat. (#3014C) 2:00 – 4:30 pm



Ok, so you bought a charm pack that you couldn't live without! And, now what do you do with it? You will learn to make TWO different quilts from one charm pack plus extra yardage using my "slice and dice" method, and then add extra fabric for borders. Quilt 1 is a 26" square (4" finished squares); and Quilt 2 is 15" x 21" (3" finished squares). This class is geared for intermediate quilters.

\$25 KIT FEE INCLUDES: Quilt Pattern, one Charm Pack (forty-two 5" x 5" squares; 100% cotton, several choices will be available), 1 1/6 yards of a light tonal fabric (for Quilt 1 and Quilt 2) – piecing the two quilt tops, 30" square of backing fabric (Quilt 1), and 19" x 25" rectangle backing fabric (Quilt 2)

STUDENT SUPPLIES: Quilt One: 30" square of 100% needled cotton batting, and 19" x 25" rectangle of 100% needled cotton batting. Quilt Two: One large spool of 100% cotton thread (natural), rotary cutter with new blade, clear ruler with a printed 45-degree angle, self-healing cutting mat, small sharp scissors, pins for piecing, basic sewing supplies

#3015 Easy Serger Pillow

Pam Damour, *The Decorating Diva*

VIKING CLASSROOM, SHOWPLEX BLDG.

Fri. (#3015B) 11:00 am – 1:30 pm



Sergers make sewing fast and fun. In this workshop you'll complete an easy pillow on the serger, while learning how to make ruching, insert piping, and a zipper. Pam will show you how to use different serger feet, and how to adjust your settings to achieve professional results.

\$20 KIT FEE INCLUDES: Fabrics all precut to size, piping, zipper, handout

STUDENT SUPPLIES: Scissors, pins, basic sewing supplies

#3016 Beginner Knitting

Pam Damour, *The Decorating Diva*

ROOM K, STATE PATROL BLDG. (1ST FLOOR)

Sat. (#3016C) 8:00 – 10:30 am



Learn to knit while making this fun boa scarf. Knitting has been around since the inception of textiles, but only recently have we discovered how fun it can be using all the new specialty yarns and fibers. Using Sashay™ yarn and straight knitting needles learn how to knit this simple but exciting project.

\$15 KIT FEE INCLUDES: Yarn, needles, directions

STUDENT SUPPLIES: No supplies needed

#3017 Fabulous Silk Shibori Ribbon Adornments

Glennis Dolce, *Shiborigirl Studios*

ROOM J, CENTENNIAL BLDG.

Thu. (#3017A) 11:00 am – 1:30 pm



Learn to make a variety of silk Shibori ribbon flowers as well as a silk ribbon necklace to complete the look. Get tips on manipulating pleated ribbon for a variety of embellishing applications for garments, home decor and jewelry making.

\$25 KIT FEE INCLUDES: Silk Shibori ribbon for necklace and flower, appropriate findings, beads

STUDENT SUPPLIES: Needle, thread, scissors

#3018 Sixty Degrees of Floral Fun Placemats

Sam Fung, *Janome*

JANOME CLASSROOM, STATE PATROL BLDG., (2ND FLOOR)

Sat. (#3018C) 2:00 – 4:30 pm



Learn how to use the angle markings on your sewing machine's throat plate to make an eight pointed star assembly quick and easy! We will be using 60 degree diamonds to create flowers that you will place on a set of four placemats to welcome spring. Once you learn the techniques, you will be able to complete the placemat set at home.

\$6 KIT FEE INCLUDES: Four black placemats, four pre-cut diamonds in floral colors (yellow/orange), three pre-cut diamonds in green

STUDENT SUPPLIES: Basic sewing supplies

#3019 Ribbon Collage Postcard

Helen Gibb, *Helen Gibb Ribbonwork*

ROOM K, STATE PATROL BLDG. (1ST FLOOR)

Fri. (#3019B) 11:00 am – 1:30 pm



Learn what to do with some of the lovely scraps of ribbons, trims and lace you have in your stash. Using some of Helen's exquisite goodies - including a sweet fabric print - you'll make and complete a ribbon collage postcard. We'll even make a flower to put on it. The kit includes everything you need - fabric, fabric print, ribbon flowers, trims, lace. You will have a choice of images and kits! Picture shown is representative of only one card. All skill levels welcome.

\$25 KIT FEE INCLUDES: Fabric, fusible backing, ribbons, trims, lace, fabric print, pre-made ribbon flowers, needle thread and detailed step-by-step instructions

STUDENT SUPPLIES: Scissors to cut ribbons and thread, tape measure or ruler in inches, pins

#3020 Thread Painting on Printed Fabrics

Nancy Goldsworthy, *Wonderfil Specialty Threads*

PFAFF CLASSROOM, EXPO HALL

Thu. (#3020A) 11:00 am – 1:30 pm



Here is your chance to learn how to take a printed fabric or panel and enhance it with threads to make it a one-of-a-kind project. Learn the techniques to use so the threads flow over your fabrics to highlight and enhance the designs. Nancy will

show you how to layer your threads for texture, use close fill stitches to flatten backgrounds and make the designs pop. There will be a discussion on thread types, needle options and batting or backing choices.

\$20 KIT FEE INCLUDES: Fabric, backing and threads needed to practice your techniques.

STUDENT SUPPLIES: Thread snips

#3021 Double Wedding Ring Table Runner

Nancy Goldsworthy, *Wonderfil Specialty Threads*

PFAFF CLASSROOM, EXPO HALL

Sat. (#3021C) 11:00 am – 1:30 pm

Learn to piece a classic Double Wedding Ring design without committing to a queen size quilt! This 3 ring project finishes at 16" x 37". You start with a completely precut kit made up of non-traditional fabrics. Your kit will contain a mix of hand dyed and batik fabrics, along with enough fabric for the bias binding. Nancy will walk you through the steps to complete your small project in class along with tips on selecting fabrics, batting and quilting designs for this and future DWR projects.

\$25 KIT FEE INCLUDES: Precut pieces to finish the top and binding, complete instructions for finishing the project, and ideas for quilting designs

STUDENT SUPPLIES: Thread snips



#3022 Putting on the Glitz Clutch

Darlene Guillory, *Pfaff*

PFAFF CLASSROOM, EXPO HALL

Thu. (#3022A) 8:00 – 10:30 am

Choose from your favorite colors to create your own "Glitzzy" Fabric. Use a wavy blade rotary cutter to make snippets of tissue lamé. Add metallic thread stitching, couching and yarns for a beautiful finish. Then create a clutch to carry with you by day or evening.

\$10 KIT FEE INCLUDES: Fabrics, batting, zipper for project, threads, yarn, etc for embellishment will be provided for use in class.

STUDENT SUPPLIES: Straight pins, thread snips, scissors



#3023 Sprocket Pillows

Allison Harris, *Bernina of America*

BERNINA CLASSROOM, EXPO HALL

Sat. (#3023C) 11:00 am – 1:30 pm, Sat. (#3023G) 2:00 – 4:30 pm

Come learn how to make a Sprocket Pillow aptly named after the sprockets on a bicycle. Learn how to sew together the fabric wedges to make the circle shaped pillow top, add batting, decorative stitches and machine quilting. We'll teach you how to sew simple curves to add the middle and back, and how to correctly stuff the pillow and sew up the hole! For the center of the pillow, you will make an embellished fabric button using embroidery to make it all your own!



\$25 KIT FEE INCLUDES: Fabric, thread, fabric covered button, poly-fill

STUDENT SUPPLIES: Basic sewing supplies

#3024 DIY Magic T-Shirt

Simon G Haskins, *Jenny Haskins/RNK Distributing*

BROTHER CLASSROOM, EXPO HALL

Thu. (#3024A) 11:00 am – 1:30 pm, Sat. (#3024C) 2:00 – 4:30 pm



The humble T-shirt and singlet top have been around for years, so Simon and Jenny decided it was time to do a little DIY Magic make-over to a \$10 t-shirt. So bring along a t-shirt and you will transform it with beautiful embroideries and ribbons. Included is a CD with the class instructions and embroidery designs.

\$25 KIT FEE INCLUDES: Fabrics, ribbons, stabilizers, crystals, CD with class instructions and embroidery designs, use of threads.

STUDENT SUPPLIES: Scissors, pins and t-shirt or singlet top

#3025 Organza Magic: Silk Rose-Making Technique

Mary Jo Hiney, *Mary Jo Hiney Designs*

ROOM K, STATE PATROL BLDG. (2ND FLOOR)

Sat. (#3025C) 11:00 am – 1:30 pm



This wonderfully organic rose-making technique is accomplished by altering the natural state of both hand-dyed silk organza and silk dupioni, after which the altered goods are formed into a beautiful rose. The organza and dupioni will be distressed and prepared in a kit in order to fully create the rose during class. Mary Jo will provide a thorough demonstration on how to accomplish the fabric-altering process.

\$15 KIT FEE INCLUDES: Hand-dyed silk organza-hemmed, distressed and ready to be sewn; distressed silk dupioni for rose center, calyx, leaves, stem wrap; pipe cleaners; glue; complete set of instructions. A selection of colorations will be made available.

STUDENT SUPPLIES: Hand sewing needle (milliners preferred); neutrals and an earthy green shade of hand-sewing thread; scissors for thread trimming.

#3026 Easy to Master Professional Techniques

Mickey Hudson, *Islander Sewing Systems*

JANOME CLASSROOM, STATE PATROL BLDG., (2ND FLOOR)

Fri. (#3026B) 11:00 am – 1:30 pm



Imagine being able to sew faster, better, and more accurately without pins, basting or trimming. This class covers amazing professional shortcuts that improve the quality of your sewing and increases confidence, all while saving time and effort. We will cover sewing straight seams, cross seams, and curves. Mickey will show you an awe inspiring solution to curved hems, pocket placement and how to insert a center zipper without

pins or basting, as well as 2 waistband variations and the flat felled seam. These professional techniques will put the joy back into sewing.

\$10 KIT FEE INCLUDES: Sample pieces and zipper.

STUDENT SUPPLIES: Basic sewing supplies

#3027 Three Block Table Runner

Candice Jewett, Quality Sewing & Vacuum

BABY LOCK CLASSROOM, EXPO HALL

Thu. (#3027A), Sat. (#3027C) 8:00 am – 10:30 am, Fri. (#3027B) 11:00 am – 1:30 pm



Candice is back to take your serging skill set to the next level. You will learn a variety of serging stitches and techniques such as pintucks, puffing strips, piping, lace insertion and more as you serge your table runner to completion. You will go home with complete instructions of the techniques as well as the directions to the table runner's companion pieces to create placemats and napkins to complete the ensemble.

\$25 KIT FEE INCLUDES: Coordinating fabric for runner, pattern table runner, technique handout, companion project pattern

STUDENT SUPPLIES: Basic sewing supplies

#3028 Machine Embroidery on Wood

Lana L. Jones, Quality Sewing & Vacuum

PFAFF CLASSROOM, EXPO HALL

Fri. (#3028B) 2:00 – 4:30 pm



Experience the stunning art form of Embroidering and Painting on Wood. Let me guide you through each step of this impressive style of machine embroidery. Step out of your "sewing box" and step into the world of Embroidery Art. You will be amazed at the sizes of wood you can use, how easy this is.

\$20 KIT FEE INCLUDES: Wood for project, stabilizer, embroidery needle, embroidery thread, embroidery bobbin, and use of my inks for painting, CD with class designs.

STUDENT SUPPLIES: Basic sewing supplies, small embroidery scissors

#3029 Classy and Clever Computer Case

Gail Kellogg, SVP Worldwide

VIKING CLASSROOM, SHOWPLEX

Thu. (#3029A) 8:00 – 10:30 am, Thu. (#3029E) 11:00 am – 1:30 pm, Fri. (#3029B) 2:00 – 4:30 pm



Experience the fantastic Husqvarna Viking Huskylock S25 Serger to create this stunning and useful case for your laptop computer. You will learn how to apply zippers with the serger, use accessory feet to embellish with decorative trim and leave class with a sophisticated and finished project.

\$25 KIT FEE INCLUDES: Two 13" x 18" double sided quilted cotton, lining fabric, light weight batting, clear vinyl, two 18" zippers, thread

STUDENT SUPPLIES: General sewing supplies

#3030 Collars & Lapels:

A New Twist on Tailoring Techniques

**Pamela Leggett, Pamela's Patterns/
Palmer Pletsch**



BROTHER CLASSROOM, EXPO HALL

Sat. (#3030C) 8:00 – 10:30 am

This class will show you some innovative new techniques to let you achieve the best and most accurate collars and lapels ever! The techniques are also useful on blouses, dresses and unstructured jackets. You will learn about no-fail interfacings, understitching, perfect corners, and linings.

\$20 KIT FEE INCLUDES: Precut collar and lapel sample, interfacing

STUDENT SUPPLIES: Neutral color thread, bamboo point turner, basic sewing supplies.

#3031 Sheer Ribbon Illusions

Libby Lehman, Bernina of America

BERNINA CLASSROOM, EXPO HALL

Thu. (#3031A), Sat. (#3031C) 8:00 – 10:30 am, Thu. (#3031E) 11:00 am – 1:30 pm



Libby will teach you the technique that made her famous! Learn to use a simple, free-motion straight stitch to create an illusion of sheer ribbons on the surface on a 12" sample piece. Apply this newly learned technique to your future quilting and garment projects.

\$25 KIT FEE INCLUDES: Decorative and bobbin threads, topstitch needles, pattern, fabric, stabilizers

STUDENT SUPPLIES: Basic sewing supplies, snips for trimming threads

#3032 Hollow Crystal Button Bead

Amy Loh-Kupser, i-bead.com

ROOM K, STATE PATROL BLDG. (1ST FLOOR)

Thu. (#3032A) 11:00 am – 1:30 pm



This fun design allows you to make a hollow bead that can be used as a button, scissor fob, tassel topper and jewelry! We'll make a large one that can be worn on its own for a necklace, or used to embellish a project, and a small one for a button. You'll be amazed at how easy it is to make buttons in many different sizes once you've made one!

\$25 KIT FEE INCLUDES: Detailed step-by-step instructions, 8mm, 6mm and 4mm Fire Polish Crystals, Size 11, 8, 6 Seed Beads, 6 lb. Fireline, Needle.

STUDENT SUPPLIES: Magnifier or reading glasses if you use them, portable task lighting, beading mat and thread snips or scissors, bead scoop. NOTE: Beaders Basic Supplies Kit (Beading Mat, Thread Snips, Bead Scoop) will be available for \$5 in the class if the student does not have them.

#3033 Tumbling Leaves Pashmina

Cindy Losekamp, *Sew Artfully Yours*

PFAFF CLASSROOM, EXPO HALL

Fri. (#3033B#) 11:00 am – 1:30 pm



Pashminas are elegant and so in vogue now. Join Cindy for this hands-on class and create a shawl you will wear again and again. We'll use specially digitized embroidery designs, two types of Angelina fibers, a beautiful shawl, and a little time to create our sparkly confection. Learn to hoop with water-soluble stabilizer when using unstable fabric, customize appliqués from Angelina fibers and then learn to appliqué letting the embroidery machine do the work for you all in one short class. Designs are for use in class only.

\$25 KIT FEE INCLUDES: One Pashmina (36" x 72"), one packet of Angelina to create the appliqués with, two layers of Wet N Gone to fill largest hoop, Steam a Seam 2 LITE for appliques, one spool of thread to take home; other thread to borrow if desired. Bobbins to use during class, and one topstitch size 80 needle to use in class

STUDENT SUPPLIES: Basic sewing supplies, scissors for cutting larger pieces and good trimming scissors since we will doing embroidery appliqué, thread snips, pins

#3034 Zipper & Ribbon Tote

Mary Mulari, *Mary's Productions/Baby Lock*

PFAFF CLASSROOM, EXPO HALL

Thu. (#3034A) 2:00 – 4:30 pm, Sat. (#3034C) 8:00 – 10:30 am



Step outside your usual "box" of stitching experience when you sew Mary's inventive tote. You've seen it zipped and unzipped on "Sewing with Nancy" and now you can sew your own with a roll of zipper and grosgrain ribbon. Learn Mary's tricks as you complete this clever tote with a standard presser foot (no zipper foot required!) and lose your fear of sewing on zippers. This tote makes a terrific gift and you'll learn the best way to present it as an amazing surprise

\$25 KIT FEE INCLUDES: 5 yd. roll of zipper, 5 yds. grosgrain ribbon, Totes to Go pattern, Ultrasuede for trims, button, safety pins, ponytail elastic

STUDENT SUPPLIES: Basic sewing supplies, standard sewing thread in black and red

#3035 Lacy Bead Crochet Necklace & Bracelet

Mary Libby Neiman, *On the Surface*

ROOM K, STATE PATROL BLDG. (1ST FLOOR)

Fri. (#3035B) 8:00 -10:30 am



If you have never done Bead Crochet, learn how with the most basic stitch, the chain stitch. Learn to incorporate Japanese glass seed beads into sparkling metallic thread, creating a casual lacy pattern and texture. In class you may choose to make a multi strand necklace or bracelet, completing the

matching piece later. Learn how to incorporate the clasp units, using an easy way to secure your starting and ending threads.

\$15 KIT FEE INCLUDES: Beads, beading mat, two clasps, thread and beading needle

STUDENT SUPPLIES: Scissors, magnification if needed

#3036 Introduction to Crochet

Pattie Otto, *Great Copy Patterns*

ROOM K, STATE PATROL BLDG. (1ST FLOOR)

Fri. (#3036B) 2:00 – 4:30 pm



Hand stitched edge finishes are making their way back into fashion. Crochet is a quick and easy edge finish that can add a bit of whimsy with eyelash yarn or a touch of elegance with metallic yarn. The class will teach the basics of crochet, focusing on the chain stitch and single crochet and demonstrate using these to edge a variety of fabrics. Tips on selecting yarn and preparing the fabric will also be included.

\$10 KIT FEE INCLUDES: Full color instruction handout, ergonomic crochet hook, materials to practice with, yarn and Polartec® fleece to make two scarves.

STUDENT SUPPLIES: Glasses for close work, scissors

#3037 Redwork for Today

Karen Pharr, *Karen Pharr Studio*

ROOM K, STATE PATROL BLDG. (1ST FLOOR)

Thu. (#3037A) 2:00 – 4:30 pm



Want a great way to relax and have stitchery you can carry anywhere? Learn to create your own time treasured hand-stitched motifs in the redwork tradition. Learn new ways to create more colors with blacks or blues to bring a more modern look. Learn marking techniques and the easy stitches used to create redwork designs.

\$17 KIT FEE INCLUDES: Pattern, stitch handout, hoop, fabric, thread, needle and needle threader

STUDENT SUPPLIES: Pencil, small scissors, reading glasses if needed

#3038 Elegant Embroidery

Vaune Pierce, *Vaune*

ROOM J, CENTENNIAL BLDG.

Sat. (#3038C) 11:00 am – 1:30 pm



Embroidery can completely change the look of a garment to make it a one of a kind creation. In Elegant Embroidery, you will learn basic embroidery stitches: Outline, Stem, Chain, Lazy Daisy stitches, Granitos, and the French Knot. Our project in this class is a Sea Island Cotton pillowcase that will fit a travel pillow. We will hand embroider a Swiss edging for the cuff, using floche to stitch the embroidery design.

\$25 KIT FEE INCLUDES: Sea Island cotton, Swiss Entredeux, Swiss edging, floche, needles, handouts

STUDENT SUPPLIES: Embroidery scissors, magnification and portable lighting.

#3039 Snap To It! Bag

Pine Needle Educator, The Pine Needle

VIKING CLASSROOM, SHOWPLEX BLDG.

Sat. (#3039C) 11:00 am – 1:30 pm



The Snap To It! Bag is back by popular demand...this easy to make bag is perfect for all sewers, especially beginners who want to improve their skills while making this “snappy” little project. The Pine Needle expert will lead you through the process of construction as she shares professional tips for excellence in sewing and the secret of the “snap”. One bag will be made in class but kit provides fabric to make all three sizes.

\$20 KIT FEE INCLUDES: Pattern, fun fabric to make a bag, fusible Pellon, interfacing and snap tape

STUDENT SUPPLIES: Rotary cutter, mat, ruler, sewing machine, thread, basic sewing supplies

#3040 To the Rescue!

Super Hero Cape for Boys & Girls

Dodi Lee Poulsen, Bernina of America

BERNINA CLASSROOM, EXPO HALL

Fri. (#3040B) 11:00 am – 1:30 pm, Fri. (#3040F) 2:00 – 4:30 pm



To the Rescue! Super Hero Cape for Boys and Girls is the perfect dress-up for any boy or girl. Just add their imagination to these capes and your child will be ready for action. Class will include making the cape and adding a personal initial to the cape front. Arm cuffs and face masks will round out the outfit. What a great project to improve your sewing technique!

\$25 KIT FEE INCLUDES: Fabric, stabilizer, thread, Velcro, pleather, embellishments and pattern

STUDENT SUPPLIES: Small embroidery scissors, basic sewing supplies

#3041 To Infinity & Beyond...

Janet Pray, Islander Sewing Systems

BROTHER CLASSROOM, EXPO HALL

Fri. (#3041B) 2:00 – 4:30 pm



In this hands-on class you will delight at making a trending and oh-so-wearable multifunctional infinity scarf. Learn tips and tricks on working with knits to make a fashion accessory, how to choose just the right fabric and color combination to enhance your wardrobe to get the most use from just one scarf. Everyone will finish their scarf in class!

\$20 KIT FEE INCLUDES: Fabric, pattern, machine needle and thread

STUDENT SUPPLIES: Basic sewing supplies, scissors, chalk, tape measure.

#3042 Drafting Skirts with Style

Rosebud, Fashion Patterns with Coni

ROOM J, CENTENNIAL BLDG.

Thu. (#3042A) 8:00 – 10:30 am



Rosebud will demonstrate three skirt slopers to give you the starting point to develop quick, easy skirt designs

or to copy your favorite designer. Learn which sloper to use to create a multitude of skirts including fitted skirts, skirts with fullness, and skirts with style lines. Follow along as Rosebud drafts a skirt for an individual in class. You will learn how to fit different waistline shapes, the proper amount of ease to fit your shape, how to design yokes, fitted & flared gores, kick pleats, style lines, sarongs, flounces and more.

\$0 KIT FEE INCLUDES: Extensive handout

STUDENT SUPPLIES: Paper and pencil

#3043 ‘Embeadery’ on Fabric

Cindy Rowell, Wonderfil Specialty Threads

ROOM J, CENTENNIAL BLDG.

Thu. (#3043A), Sat. (#3043C) 2:00 – 4:30 pm



In this hands-on class you will be introduced to what Cindy calls “Embeadery”. This technique combines hand embroidery with beadwork. Cindy will introduce you to a variety of unique “couture” type beading applications and techniques. While completing a simple project, you will learn how beads are used to embellish, add texture, depth and dimension to fabric.

\$20 KIT FEE INCLUDES: Detailed technique manual of all techniques learned in class, all beads (a variety of types and sizes and shapes), beading needle, thread, project that students will be adding beads to while learning basic techniques.

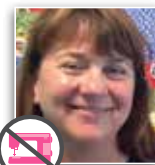
STUDENT SUPPLIES: Scissors, eyeglasses if needed for close work

#3044 No Slip Pedal for Sewing Machines

Lynnette Sandbloom, Beach Garden Quilts

ROOM J, CENTENNIAL BLDG.

Fri. (#3044B) 11:00 am – 1:30 pm



Does your sewing machine pedal slip? Do you have to lean over and reposition it? Or have you purchased one of those expensive and boring pedals mats only to have it fill with thread and lose its grip? Make a no slip pedal mat! Made from fabric and adorned as a quilt, your pedal will be stylin’ and behavin’ like no other! Made like our always popular floor mats but fewer steps. EASY!

\$25 KIT FEE INCLUDES: Fabric, many options, Pellon 805, backing cloth is multi-purpose cloth pre-primed, Mod Podge, brushes, and Polycrylic

STUDENT SUPPLIES: Rotary cutter, ruler minimum 10", cutting mat large enough to cut 10"

#3045 Over-Dyeing Kimono Silks & Shibori Techniques

Becky Scellato, Shibori Dragon

ROOM J, CENTENNIAL BLDG.

Sat. (#3045C) 8:00 – 10:30 am



Students will play with over-dyeing pieces of vintage kimono silks with ColorHue instant set dyes. They will also be dyeing a habotai silk scarf to experiment with ColorHue dyes as well as learning how to achieve an interesting Shibori effect with folding, tying, scrunching and wrapping techniques. A pattern will be provided so they can incorporate the dyed kimono pieces and silk scarf into a small traditional Japanese bag.

\$25 KIT FEE INCLUDES: Includes a variety of vintage kimono silks and a silk scarf for dyeing, handouts, use of dyes and dyeing supplies during class.

STUDENT SUPPLIES: Students should bring an apron or old shirt to wear and rubber gloves, heavy weight white cotton thread for stitching, fine tip embroidery scissors.

#3046 Lotus Blossom & Sashiko Table Runner

Becky Scellato, Shibori Dragon

ROOM J, CENTENNIAL BLDG.

Sun. (#3046D) 11:00 am – 1:30 pm

You'll be making a stunning 18" x 40" table runner with Asian fabrics and Sashiko motifs. The lotus blossom designs are fusible motifs provided in the class kit. Students will learn how to transfer the Sashiko designs to the fabric and do Sashiko stitching. Instructions will be given for adding the border and finishing the table runner at home.

\$20 KIT FEE INCLUDES: Border fabric and indigo fabric for background, fusible Asian fabrics for lotus design, Sashiko design patterns, transfer paper, Sashiko thread and needle.

STUDENT SUPPLIES: Scissors, 12 inch ruler, ball point pen, straight pins, wash-out/ iron-off marking pen.

#3047 Suzanne Wrap

Emma Seabrooke, SewkeysE by Emma Seabrooke

BABY LOCK CLASSROOM, EXPO HALL

Thu. (#3047A) 11:00 am – 1:30 pm, Fri. (#3047B) 2:00 – 4:30 pm

Suzanne always wrapped you in her warmth and made you feel like a beautiful person, as does this wrap named for her. Make it with two rectangles of stretch lace fabric and it will be delicately elegant; choose a sweater knit or lightweight fleece and it will be warm and gorgeous. The wrap fits most anyone, and you can complete the garment quickly and easily.

\$25 KIT FEE INCLUDES: Fabric for the garment, Suzanne Pattern, and stay tapes to complete the project.

STUDENT SUPPLIES: Standard sewing supplies, garment scissors, 75/11 Stretch needles, 100% poly thread, (bring a selection of colors that you might choose in fabrics), machine walking foot.

#3048 Nancy Cardigan

Emma Seabrooke, SewkeysE by Emma Seabrooke

BABY LOCK CLASSROOM, EXPO HALL

Sat. (#3048C) 2:00 -4:30 pm

The Nancy Vest Cardigan is easy to make and a pleasure to wear. It is fashionable, comfortable and fits all. You can shorten or lengthen the jacket. Nancy can be made with two yards of most any knit and will be your favorite new garment. Learn to sew with knits and have a great cardigan.

\$40 KIT FEE INCLUDES: Two yards of fabric, Nancy Pattern, stay tape to complete the project.

STUDENT SUPPLIES: Standard sewing supplies, paper scissors, fabric scissors, 75/11 stretch needles, 100% poly thread (bring a selection of colors that you might choose in fabrics), machine walking foot.

#3049 Machine Embroidered Task-it Bag

Lisa Shaw, Sew-Bubbles

BROTHER CLASSROOM, EXPO HALL

Fri. (#3049B) 11:00 am – 1:30 pm

This project is an embroidered purse/tote that folds flat for travelling. An embroidered elegant border along the top is complimented by the pocket design. You will see the software techniques demonstrating how these coordinating designs were created and learn some simple customizing techniques to help achieve perfect alignment.

\$20 KIT FEE INCLUDES: Original packaged pattern, fabric, stabilizer, thread, webbing, ribbon, CD with embroidery designs and notes from software presentation

STUDENT SUPPLIES: Scissors, black sewing thread

#3050 Make Your Own Cord & Trim

Robyn Spady, Spady Studios/ Embellishment Village

ROOM K, STATE PATROL BLDG. (1ST FLOOR)

Sat. (#3050C) 2:00-4:30 pm

Cord and trim can be the perfect element for finishing your project. Whether you're making a Chanel-style jacket and want to make your own trim, looking for different garment and accessory closure ideas, or create jewelry and other personal adornment, then this class is for you! In this hands-on class, participants will be introduced to a variety of simple techniques that may be used to create a wide variety of cord and trim.

\$20 KIT FEE INCLUDES: Copy of "Make Your Own Cord and Trim" and all supplies and tools for the hands-on portion

STUDENT SUPPLIES: Pencil or pen for note taking

#3051 Sew Constructive

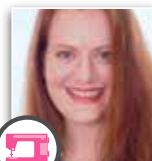
Katrina Walker, SVP Worldwide

PFAFF CLASSROOM, EXPO HALL

Fri. (#3051B) 8:00 – 10:30 am

Sat. (#3051C) 2:00 – 4:30 pm

Let's get back to basics – seams, seam finishes, hems and darts! These basic construction skills are the foundation for every successful sewing project. If you'd like to learn, practice



or simply refresh these skills – this class is for you! Build a take-home reference notebook (provided) as you sew your way to success.

\$15 KIT FEE INCLUDES: All fabric and other notions required to sew samples, thread, needles, instructional notebook pages, binder.

STUDENT SUPPLIES: Sharp fabric scissors, thread snips, pins, glue stick or tape for adhering samples to notebook pages, basic sewing supplies

#3052 Serger Strands Necklace

Nadeen Ward, *Dolls R Sew Fun/Ghee's*

VIKING CLASSROOM, SHOWPLEX BLDG.

Thurs. (#3052A) 2:00 – 4:30 pm, Fri. (#3052B) 8:00 – 10:30 am



Learn to make a wonderful necklace with beads, thread and your serger. Learn to serge (no presser foot) over fishing line to create a beautiful stranded necklace. You will get to know more about your serger and this class does not require advanced knowledge.

\$25 KIT FEE INCLUDES: All threads and gems to create the necklace, handout.

STUDENT SUPPLIES: Magnification, thread clippers

#3053 Beginning Silk Ribbon Embroidery

Teresa White, *Shibori Dragon*

ROOM K, STATE PATROL BLDG. (1ST FLOOR)

Thu. (#3053A) 8:00-10:30 am, Sun. (#3053D) 11:00 am – 1:30 pm



Learn an easy fun way to use silk ribbon embroidery on quilts, vests, pillows and more. No stress – gorgeous results. Some of the stitches you will learn are spider web rose, knotted rose, rouching with ribbon, loop stitch, lazy daisy, plume stitch, Japanese ribbon stitches and pistil stitch. Three original design motifs will be provided.

\$20 KIT FEE INCLUDES: Silk ribbons, needles, embroidery floss, fabric, embroidery hoop and patterns.

STUDENT SUPPLIES: Wash out white chalk pencil, 1" x 6" ruler, scissors, and needle threader

#3054 Leap Frogs Umbrella

Dini Yan, *Momo Dini*

BROTHER CLASSROOM, EXPO HALL

Thu. (#3054A) 2:00 – 4:30 pm, Fri. (#3054B) 8:00 – 10:30 am



Discover new excitement in your embroidery skills with this unusual and whimsical project: an umbrella! You'll learn to prepare the umbrella for embroidery; embroider one of Dini's wonderful 'reversible' designs; and finish with style.

\$25 KIT FEE INCLUDES: Umbrella with 100% UV protection from sun, 1-Ribbit! Ribbit! Embroidery design, WET N MELT Stabilizer, threads for use in class.

STUDENT SUPPLIES: Sharp scissors, a stitch stripper

#3055 Cosmetic Serger-y

Gail Yellen, *Gail Patrice*

BABY LOCK CLASSROOM, EXPO HALL

Thu. (#3055A) 2:00 -4:30 pm, Sat. (#3055C) 11:00 am – 1:30 pm



Learn to tweak utility stitches and turn your serger into an important embellishment tool. Learn some very cool techniques that will add a whole new dimension to your garment, home decor or quilt projects. Create braid trim and embellished elastic button loops on your serger. Leave with a sample packet loaded with information and the inspiration to tackle any decorative serger technique successfully.

\$25 KIT FEE INCLUDES: Fabric swatches, elastic, trims, weaving double eye needle, lace, and detailed handout

STUDENT SUPPLIES: Basic sewing supplies

#3056 Cover Hem Workshop

Gail Yellen, *Gail Patrice*

BABY LOCK CLASSROOM, EXPO HALL

Fri. (#3056B) 8:00 – 10:30 am



Because the cover hem has lots of built-in stretch, it's the perfect way to hem knits. But did you ever think about other ways to use this versatile stitch? We'll do a zipper application, a lapped seam, a no-facing neckline finish, an elastic application and stitch in the round. Put decorative thread in the looper and watch what happens—you can "draw on Fabric!"

\$25 KIT FEE INCLUDES: Detailed handout, decorative thread, fabric swatches, zipper, elastic

STUDENT SUPPLIES: Basic sewing supplies



Baby Lock Classroom (Expo Hall)

| | 8:00 am | 1:00 pm |
|-----------|----------------------------------------------------------------------|---------------------------------------------------------|
| Wednesday | #4001 East Meets West <i>Baby Lock Educator</i> | #4002 Serger Pillow <i>Baby Lock Educator</i> |
| Sunday | #4003 Designer Serger Techniques <i>Baby Lock Educator</i> | No Class |

Bernina Classroom (Expo Hall)

| Wednesday | #4015 The Glam Wristlet <i>Cheryl Kuczek</i> | #4016 Floral Delights <i>Libby Lehman</i> |
|-----------|------------------------------------------------------------|-----------------------------------------------------|
| Sunday | #4024 Polka Dot Girl's Dress <i>Valerie Wood</i> | No Class |

Brother Classroom (Expo Hall)

| Wednesday | #4019 Seven Sisters Simplified - No Set-In Seams <i>Marti Michell</i> | #4011 A Place In The Sun Machine Embroidered Placemat <i>Simon Haskins</i> |
|-----------|---------------------------------------------------------------------------------|--------------------------------------------------------------------------------------|
| Sunday | #4025 It's All About Embellishment <i>Gail Yellen</i> | No Class |

Pfaff Classroom (Expo Hall)

| Wednesday | #4012 Machine Quilted Tote Bag & More! <i>Sue Hausmann</i> | #4010 Simple Stitched Seascape <i>Nancy Goldsworthy</i> |
|-----------|-----------------------------------------------------------------------------|-------------------------------------------------------------------|
| Sunday | #4021 Machine Beading & Surface Embellishment <i>Cindy Rowell</i> | No Class |

Janome Classroom (State Patrol Building, 2nd Floor)

| Wednesday | #4009 Quilted Scrap Fabric Handbag <i>Sam Fung</i> | #4005 Shades of Circles Wall Hanging <i>Mary Carollo</i> |
|-----------|--------------------------------------------------------------|--------------------------------------------------------------------|
| Sunday | #4009 Quilted Scrap Fabric Handbag <i>Sam Fung</i> | No Class |

Viking Classroom (Showplex)

| Wednesday | No Class | No Class |
|-----------|------------------------------------------------------------------|----------|
| Sunday | #4013 Quick Gifts to Make with Sue <i>Sue Hausmann</i> | No Class |

Wednesday Only

| | 8:00 am | 1:00 pm |
|---------------------------------------|------------------------------------------------------------------------------------------------------|---------------------------------------------------------------------------|
| Paulhamus 1 | #4017 Sea Treasures <i>Amy Loh Kupser</i> | #4006 Watercolor Felting with Wool <i>Barbara Crawford</i> |
| Paulhamus 2 Downstairs | #4004 Design Magic <i>Jan Bones</i> | #4007 Fitting the "Girls" <i>Connie Crawford</i> |
| Paulhamus 3 2nd Floor Rm. 1 | #4014 One Body – Multiple Alterations <i>Lorraine Henry</i> | #4022 Great fitting, EZ Blouses <i>Peggy Sagers</i> |
| Paulhamus 4 2nd Floor Rm. 2 | #4018 Snip it, Stitch it, Wear it! Sweat-shirt Modification Workshop <i>Cindy Losekamp</i> | #4023 Beaded Bliss <i>Katrina Walker</i> |
| State Patrol 1st Floor | #4020 Bras 101 - Basic Fit <i>Monica O'Rourke Bravo</i> | #4008 Hand Piecing with Fabric "Crumbs" <i>Michele Crawford</i> |




Four Needle Sessions

These half-day classes take place on Wednesday & Sunday only. They are in-depth learning experiences. Some classes may have an additional materials charge.

⊕ 4 hours \$50 (pre-registration required)

#4001 East Meets West

Baby Lock Educator, Baby Lock

BABY LOCK CLASSROOM, EXPO HALL

Wed. (#4001X) 8:00 am – 12:00 noon



East meets West in the modern quilt constructed on the serger and embellished on the serger and Sashiko stitch. See how Baby Lock has combined piecing using the serger to create this modern quilt pattern. The final step is the quilting, using the chain stitch for a modern look and the Sashiko stitch for a traditional look. This piece can be used as a small wall hanging or table runner. Techniques covered: crazy piecing on a serger, ease and precision of piecing different fabric types using a serger, decorative stitches as an accent trim in quilting.

\$20 KIT FEE INCLUDES: All the fabric needed to complete the project

STUDENT SUPPLIES: Scissors to snip threads, scissors to cut fabric, rotary cutter, mat (12" x 18") and ruler

#4002 Serger Pillow

Baby Lock Educator, Baby Lock

BABY LOCK CLASSROOM, EXPO HALL

Wed. (#4002Z) 1:00 – 5:00 pm



This home-dec project combines silk, cotton, and velveteen fabrics; and decorative thread to make this decorative pillow designed for the serger. You will learn quick construction techniques and easy, but elegant embellishment techniques with the chain and cover stitch.

\$20 KIT FEE INCLUDES: All fabric pieces for front, back, zipper and embellishment fabric

STUDENT SUPPLIES: Thread clippers, fabric scissors, rotary cutter, mat (12" x 18") and ruler, basic sewing supplies

#4003 Designer Serger Techniques

Baby Lock Educator, Baby Lock

BABY LOCK CLASSROOM, EXPO HALL

Sun. (#4003D) 8:00 am – 12:00 noon



See how the designers add those unique touches to their knit garments. Whether it is a bound neckline or a decorative hem creating that unique look, it is what sets them apart. Baby Lock has designed a notebook class that allows you to create some of those designer finishes. Please note that this class is set-up as a round robin.

\$20 KIT FEE INCLUDES: Various types of knits and notebook pages

STUDENT SUPPLIES: Basic sewing supplies

#4004 Pattern Design Magic

Jan Bones, *Lingerie Secrets*

CLASSROOM 2, PAULHAMUS BLDG.

Wed. (#4004X) 8:00 am – 12:00 noon



You will invent and create designs from basic top and skirt patterns, learn to add a new design element to an existing pattern, and create a notebook full of great references. Learn to do attractive bust darts that fit, change the seams in a pattern and add flare or pleats to skirt and pant patterns.

\$25 KIT FEE INCLUDES: A 30 page instruction booklet, set of pre-cut top, skirt & pant patterns and a notebook with titled pages ready for use in class. Set of French curves and drafting triangle.

STUDENT SUPPLIES: Pencil, eraser, 1 colored pencil (red, blue etc), pen, 12" ruler (gridded one is best), good paper scissors, Scotch tape (green label type that you can write on with pen or pencil).

#4005 Shades of Circles Wall Hanging

Mary Carollo, *Janome America*

JANOME CLASSROOM, STATE PATROL BLDG.
(2ND FLOOR)

Wed. (#4005Z) 1:00 – 5:00 pm



The graduating colors of Ombre fabric are used to create a dramatic wall hanging. Using the Circular Sewing Attachment, circle accents are added as appliqués and textured effects with decorative stitches. Metallic threads add sparkle accents with single pattern stitches sprinkled throughout.

\$20 KIT FEE INCLUDES: ½ yd Ombre fabric, one 9" x 22" cotton Lamé, one 1 yd fusible web, one 24" x 17" fabric; for backing cotton, four 10" tear away stabilizer squares, one pre-wound bobbin (white)

STUDENT SUPPLIES: Scissors, rotary cutter, cutting mat, 12" ruler, quilt pins, small trimming scissors

#4006 Watercolor Felting with Wool

Barbara Crawford, *Crawford Designs*

CLASSROOM 1, PAULHAMUS BLDG.

Wed. (#4006Z) 1:00 – 5:00 pm



With the inspiration of master artworks, learn unique wool felting techniques that mimic brush strokes of fine paintings. 'Paint with wool' is probably the most controlled of all felting techniques and produces crisp images without the use of needles or machines. Learn how to create watercolor effects by using a cardboard resist and a bar of soap to make a gorgeous handbag.

\$28 KIT FEE INCLUDES: Wool roving, soap and, nylon tulle, handspun yarns, color art prints, specialty fibers, bubble wrap, roller, and plastic cover (will have tea pitchers on hand)

STUDENT SUPPLIES: Rubber gloves, large piece of corrugated cardboard, foam noodle (cut in half), two rolls of bubble wrap (12" x 36"), large towel, cookie sheet, craft scissors, wear older clothing

#4007 Fitting the "Girls"

Connie Crawford, *Fashion Patterns by Coni*

CLASSROOM 2, PAULHAMUS BLDG.

Wed. (#4007Z) 1:00 – 5:00 pm



Using your personal measurements and cup sizes, learn the art of fitting a pattern for various cup sizes. Connie will demonstrate the different drapes to make the various cup sizes (A/B, C/D/DD, F/G, or H/I cups) and armholes to create a perfect custom blouse. Using finished sewn shells, Connie will fit each attendee for their personal fit and also demonstrate how to use this custom blouse pattern to style any blouse, shirt, dress, jacket or vest.

\$0 KIT FEE INCLUDES: A handout of the power point presentation will be given to each attendee.

STUDENT SUPPLIES: Please wear appropriate undergarment for the fitting.

#4008 Hand Piecing with Fabric Crumbs

Michele Crawford, *Flower Box Quilts*

ROOM K, STATE PATROL BLDG. (1ST FLOOR)

Wed. (#4008Z) 1:00 – 5:00 pm



Hand Piecing is a fun and relaxing way to piece quilts that can increase your accuracy. Piecing quilts by hand is a portable craft you can do anywhere. Learn to piece a scrappy 14½" square by using the "Crumb Quilting" technique to make a table topper. Use embroidery floss to hand "quilt" your batted pieced square with simple embroidery stitches.

\$15 KIT FEE INCLUDES: Fabric scraps, two needles, 14" square of batting and muslin, sewing thread, embroidery floss, and ¼" quilting tape

STUDENT SUPPLIES: Small sharp hand scissors, thimble if desired

#4009 Quilted Scrap Fabric Handbag

Sam Fung, *Janome America*

JANOME CLASSROOM, STATE PATROL BLDG.
(2ND FLOOR)

Wed. (#4009X), Sun (#4009D) 8:00 am – 12:00 noon



Fast Fun and Easy. This is the perfect project for using those leftover pieces of fabric. Don't worry about colors, prints, light or dark value—anything will do. This lined and pieced handbag has an inside pocket and square bottom with points on top and a magnetic closure. Finished size 9" x 10" (not including handles).

\$15 KIT FEE INCLUDES: 18" x 30" cotton batting, 1 purse handles, ½ yd Pellon shirt fuse interfacing

STUDENT SUPPLIES: Marking pen, scissors with sharp point, one magnetic snap set, ½ yd lining fabric (busy print), 60 2½" blocks from various fabric scraps.

#4010 Simple Stitched Seascape

Nancy Goldsworthy, *Wonderfil Threads*

PFAFF CLASSROOM, EXPO HALL

Wed. (#4010Z) 1:00 pm – 5:00 pm



This class will teach you the basics of machine couching while you design your own seascape. We will mix simple zig zag and fancy stitches to bring our little piece of the ocean to life. Hand beading and other embellishments will be discussed along with quilting options. Discover the fun of creating surface designs that can enhance your next garment or quilt.

\$25 KIT FEE INCLUDES: Fabric, batting, binding, and assorted threads, beads and trims to put together your own view of the ocean floor.

STUDENT SUPPLIES: Thread snips, thimble (if you use one), beading needle, quilting needle or sharps needle

#4011 A Place in the Sun Machine Embroidered Placemat

Simon Haskins, *Jenny Haskins Products/
RNK Distributing*

BROTHER CLASSROOM, EXPO HALL

Wed., (#4011Z) 1:00 pm – 5:00 pm



Come and learn one of Jenny and Simon Haskins' latest techniques while making this beautiful quilted placemat. This class will teach you how to quilt in the hoop; machine embroidered applique; and Jenny's Quilt-as-you-go technique—the Jenny Join. A FREE CD with designs and instructions will be given to each attendee.

\$35 KIT FEE INCLUDES: All fabrics, batting, stabilizers, use of threads, CD with class instructions and embroidery designs

STUDENT SUPPLIES: Scissors, pins

#4012 Machine Quilted Tote Bag and More!

Sue Hausmann, *SVP Worldwide*

PFAFF CLASSROOM, EXPO HALL

Wed. (#4012X) 8:00 am – 12:00 noon



Learn sewing and quilting techniques that will save you time, and make sewing and quilting faster, easier, professional and more fun as you make a quilted tote bag. Experience the newest in sewing and quilting tools, battings and where and why to use them. This class teaches machine quilting made easy, fast binding with perfect mitered corners, quilting in the hoop, zippers, flatlock seams and “sew” much more.

\$16 KIT FEE INCLUDES: Batik fabric, seven batting types and fibers, Sulky Blendable Thread for tote plus supplies for two quick projects.

STUDENT SUPPLIES: Basic sewing supplies including fabric cutting scissors, size 90 topstitch needles

#4013 Quick Gifts to Make With Sue

Sue Hausmann, *SVP Worldwide*

VIKING CLASSROOM, SHOWPLEX BLDG.

Sun. (#4013D) 8:00 am – 12:00 noon



You will make and finish your quick gift projects to take home and give to yourself or someone special! Sue is known for her ‘Fast, Faster, Fastest’ techniques and you will learn and stitch her favorites including how to sew on sticky and vinyl surfaces, the easy way to put in a zipper, the quickest way to create a binding, easy ways to quilt and “sew” much more! Sue will also teach you about the different types of batting and when, where and how to use them.

\$20 KIT FEE INCLUDES: All supplies for four projects

STUDENT SUPPLIES: Basic sewing supplies

#4014 One Body, Multiple Alterations

Lorraine Henry, *L H Enterprises/
Two Easy Tape Co.*

CLASSROOM 3, PAULHAMUS BLDG. (2ND FLOOR)

Wed. (#4014X) 8:00 am – 12:00 noon



We come in all shapes and sizes—learn measurement analysis to determine where and what to change. We will alter patterns for such figure combinations as a short midriff which requires the pattern to be shortened, but with a prominent bust which requires the pattern to be lengthened! Learn to handle such opposing figure variations and the order to make changes for correct fit.

\$12 KIT FEE INCLUDES: Binder, instruction sheets, backing sheets, half scale practice patterns and page protectors.

STUDENT SUPPLIES: 10" x 12" piece of foam board or ¼" thick cardboard, small paper scissors, invisible or removable Scotch tape, straight pins, small ruler, pencil

#4015 High Style for Your Life with the Glam Wristlet

Cheryl Kuczek, *Paradiso Designs/
Quiltworks Northwest*

BERNINA CLASSROOM, EXPO HALL

Wed. (#4015X) 8:00 am – 12:00 noon



It is crazy-easy to whip up your very own Glam Wristlet, and get a great looking bag that sings with style in so little time! Learn that by having the correct foot, and sewing needle, you can become a true sewist in designer bag making. Find out what makes a handbag sing with style. Have a blast learning all this and more, making the bag that rocked the cover of *Sew Stylish* last fall.

\$33 KIT FEE INCLUDES: Instructions, pleather pieces, fabric insert, muslin pieces, iron-on vinyl, lining, pocket, pocket contrast, pocket trim, zipper

STUDENT SUPPLIES: Thread nips, 6-8" fabric shears, 1½" ball head pins

#4016 Floral Delights

Libby Lehman, Bernina of America

BERNINA CLASSROOM, EXPO HALL

Wed. (#4016Z) 1:00 – 5:00 pm



Choose a gorgeous flower panel to create a beautiful wall quilt. You will learn three stitching techniques; couching, bobbin drawing and decorative patterns. Libby will also show ideas for quilting, how to add the border and her quick and easy way to add binding with a special finishing touch. A perfect class for those who have been intimidated by their machines!

\$35 KIT FEE INCLUDES: Fabric panel, stabilizer, decorative and bobbin threads, trims for couching and other notions

STUDENT SUPPLIES: Scissors for threads and trims

#4017 Sea Treasures

Amy Loh-Kupser, i-bead.com

CLASSROOM 1, PAULHAMUS BLDG.

Wed. (#4017X) 8:00 am – 12:00 noon



Learn to make this beautiful bracelet featuring richly colored 4mm Glass Pearls and 4mm Fire Polish Crystals with accenting seed beads. It may look complex but this design is great for beginners and advanced beaders alike. Kit makes up to a 9½" bracelet and longer if needed. Available in five different color combinations.

\$25 KIT FEE INCLUDES: Detailed step-by-step instructions, 4mm Glass Pearls, 4mm Fire Polish Crystals, Size 11 Seed Beads, (1) Snap Clasp, 6 lb. Fireline, Needle.

STUDENT SUPPLIES: Magnifier or reading glasses if you use them. Portable task lighting, beading mat and thread snips or scissors, bead scoop. NOTE: Beaders basic supplies kit (beading mat, thread snips, bead scoop) will be available for \$5 in the class if the student does not have them.

#4018 Snip it, Stitch it, Wear it! Sweatshirt Modification Workshop

Cindy Losekamp, Sew Artfully Yours

CLASSROOM 4, PAULHAMUS BLDG. (2ND FLOOR)

Wed. (#4018X) 8:00 am – 12:00 noon



Properly get a sweatshirt ready for embellishment. Find and stabilize the center front, learn how to add clear elastic to the neckline to prevent stretching, cut the shirt apart and fit it. Stabilize the hemline and remove excess in the shoulder area. The shirt you take home will be fitted and prepared so you can CREATE a jacket that looks like a million!

\$35 KIT FEE INCLUDES: One sweatshirt, all stabilizers, clear elastic, no-show mesh, Steam a Seam Lite, stay tape, choice of pattern with book on CD-Rom

STUDENT SUPPLIES: 24" x 36" rotary cutting mat, 24" ruler, cutter, pins, fabric marker for light and dark colors, good cutting scissors, pen and note paper. After you receive your ticket, please contact Cindy at closekamp@aol.com with your size and color choice.

#4019 Seven Sisters Simplified: No Set-in Seams

Marti Michell, Michell Marketing Inc.

BROTHER CLASSROOM, EXPO HALL

Wed. (#4019X) 8:00 am – 12:00 noon



The traditional Seven Sisters is a well-loved, but seldom made, quilt pattern. That should change with this simplified version which has completely eliminated set-in seams. Instead of being entirely made with 60 degree diamonds and dot-to-dot seams, it is all straight line, edge to edge sewing. In class we only make one block, but there will be demonstrations on setting the quilt blocks together (no set-in seams) and as a bonus another pair of hexagon blocks that use similar no set-in seams techniques.

\$12 KIT FEE INCLUDES: Book of 49 different hexagon quilts. Use of two specialty rulers during class.

STUDENT SUPPLIES: Two sets of fat quarters in contrasting colors for the background and Seven Sisters stars. Matching thread, Rotary cutter, mat (at least 12" x 18") and ruler (at least 3" x 18") A small (such as 6" x 8") mat or rotating mat, if you own one, general sewing supplies.

#4020 Bras 101 - Basic Fit

Monica O'Rourke Bravo, BravoBella

ROOM K, STATE PATROL BLDG. (1ST FLOOR)

Wed. (#4020X) 8:00 am – 12:00 noon



Each student will experience a personalized fitting session as you learn to analyze fit on each other. Using the results of your fitting session, you will make necessary adjustments to customize a pattern just for you. You will learn about fabrics and findings and, with your custom-made pattern you will cut out your bra. Leave class with your pattern and enough materials for one bra.

\$25 KIT FEE INCLUDES: Multi-sized pattern, one basic bra kit (fabrics and findings)

STUDENT SUPPLIES: Glass-head silk pins (NO quilting pins!), lightweight scissors or an 18mm rotary blade and mat for fabric, paper scissors, a pencil, a measuring tape, and a small ruler

#4021 Machine Beading & Surface Embellishment

Cindy Rowell, Wonderfil Specialty Threads

PFAFF CLASSROOM, EXPO HALL

Sun. (#4021D) 8:00 am – 12:00 noon



Machine beading can be done using any home sewing machine and requires no special feet or attachments. You will learn how to attach different types and sizes of beads, sequins, oat beads, crystals and how decorative threads can be used to add depth and dimension to enhance your sampler quilt project. Once you have learned the basics of machine beading and surface embellishment, your imagination is the limit.

\$25 KIT FEE INCLUDES: Written technique instructions in hand out form, Variety of beads (different types, sizes, and shapes)

a selection of decorative threads, a sampler quilt base to embellish (approximately 18" x 18")

STUDENT SUPPLIES: Scissors, eye glasses if you need them for close work, one package of Schmetz needles size 60/8 or 70/10, a spool of white thread. Students may bring unique or special beads in different sizes if they have them.

#4022 Great Fitting, EZ Blouses

Peggy Sagers, Silhouette Patterns

CLASSROOM 3, PAULHAMUS BLDG. (2ND FLOOR)

Wed. (#4022Z) 1:00 – 5:00 pm



Try on pre-made samples of the Classic Blouse by Silhouette Patterns. The sleeves are interchangeable so you can easily get the perfect blouse by trying on the body and then choosing your sleeve based on the mobility you want in your blouse. Can't find the perfect blouse to fit? Not any more...this will do it for you and then you can spend your time sewing, not fitting.

\$14 KIT FEE INCLUDES: #600 Classic Blouse pattern

STUDENT SUPPLIES: Pins, paper & pen for notes

#4023 Beaded Bliss

Katrina Walker, Katrina Walker/SVP Worldwide

CLASSROOM 4, PAULHAMUS BLDG. (2ND FLOOR)

Wed. (#4023Z) 1:00 – 5:00 pm



What could possibly be better than a hand-dyed scarf? A beaded one, of course! Enter a world of colorful beaded bliss as you relax and play with color and light with your very own hand-dyed masterpiece. Learn how easy it is to dye your own gossamer chiffon scarf and then dress it up with a lacy latticework fringe. Samples of alternative scarf beadwork and embellishment will be shown and discussed in class.

\$20 KIT FEE INCLUDES: Scarf, beads, dyes, silk dyeing practice samples, beading thread, needles, beading mat, thread conditioner, gloves, and instructional materials.

STUDENT SUPPLIES: Dye-friendly clothing, safety pins, thread snips, (if possible) old towel for drying silk scarf.

#4024 Polka Dot Girls Dress

Valerie Wood, Bernina of America

BERNINA CLASSROOM, EXPO HALL

Sun. (#4024D) 8:00 am – 12:00 noon



Make this quick, easy polka dot girls dress for sizes 2T to 6 in one afternoon. This dress has set-in gathered sleeves, a button up back, square neck, and is embellished with decorative stitches and embroidery. You will leave class with the cutest dress for your little one—sure to be her favorite.

\$35 KIT FEE INCLUDES: Fabric, buttons, interfacing, elastic, Velcro, & thread. Upon receipt of your ticket, please email sarah@materialgirlsqiltshop.com, ATTN: Valerie to indicate dress size. Pattern will be pre-cut to order. No refunds.

STUDENT SUPPLIES: Fabric scissors, straight pins, white chalk, general sewing supplies.

#4025 It's All About Embellishment!

Gail Yellen, Gail Patrice Design

BROTHER CLASSROOM, EXPO HALL

Sun. (#4025D) 8:00 am – 12:00 noon



The right embellishment can make any sewing project go from mundane to marvelous. Applique, reverse applique, "shrink thread", "windows" Charming "window dressing", twin needling, stacked button combos, 2 Un-Beweavable techniques, couching—we'll do them all.

\$25 KIT FEE INCLUDES: shrink thread, twin needle, fabric swatches, interfacing, buttons, beads, charm, fibers for weaving, double eye needle, hand-dyed ribbons

STUDENT SUPPLIES: Basic sewing supplies

Style Shows

These 45 minute style shows bring an exciting array of fashion and design. Come be inspired by these talented designers.

⌚ 45 minutes

Free

Simplicity Inspires You to Sew: Fresh Fashion & Fabric Trends

Debra Kreiling for Simplicity

EXPO RUNWAY, 2ND FLOOR PAVILION

Sat. only, 9:30-10:15 am

Straight from the Simplicity design team- fresh fashion and fabric trends. A great runway show filled with the signature Simplicity collections, including Cynthia Rowley, Leanne Marshall, Inspired by Project Runway and more. This show will inspire you to sew, sew, sew!

Vogue & Butterick Inspired Everyday Creative's Closet

Marcy & Katherine Tilton

EXPO RUNWAY, 2ND FLOOR PAVILION

Thur., Fri., Sat., 10:30-11:15 am

Popular Vogue & Butterick pattern designers, sisters Katherine & Marcy Tilton are longtime sewing collaborators. They will show original garments from their pattern designs, ensembles from their personal wardrobes, interpretations from sewing friends and new pieces developed especially for this lively and idea packed fashion show. You'll be treated to an inspiring collection of wearable clothes and practical design techniques. Katherine and Marcy will trade quips and tricks of the trade while sharing their latest creations so you can go home, tweak their patterns and turn them into your own.

Fashion Trends & Sewing Tips for 2012 Vogue, Butterick, McCall's, & Kwik Sew Patterns

Pati Palmer & Marta Alto

EXPO RUNWAY, 2ND FLOOR PAVILION

Thur., Fri., Sat., 11:30 am-12:15 pm

See the up-to-the-minute trends as pattern companies are spot- on with what is happening

in ready-to-wear NOW. But, with sewing, you won't be in a cookie cutter look as you can make it your own. You won't have poor fit, as you can fit to YOUR body shape. Pati will comment on the trends and give ideas and tips for sewing these garments. Marta Alto will model what she has been sewing. The tips from the show will appear in the spring issue of Fashion for REAL People FREE on-line newsletter available April 1, 2012 at www.palmerpletsch.com.

Goodwill Vintage Fashion Show

Golden Oldies Volunteers,

Tacoma Goodwill

EXPO RUNWAY, 2ND FLOOR PAVILION

Fri., 12:30-1:15 pm

Highlighting a century of fashion highs and lows, from Victorian lingerie to over-the-top psychedelic flower power suites, from haute couture to knickerbockers, the Golden Oldies provide an entertaining and educational look at the world of women's fashions. A must see!

The Best of the Best, 4H Fashion Revue

Laura Mendoza, State Fashion Revue

Superintendent

EXPO RUNWAY, 2ND FLOOR PAVILION

Sat., 12:30-1:15 pm

Enjoy a plethora of garments created by award winning 4-H youth from all over Washington State. To be the 'Best of the Best', 4-H members participate in preliminary events by modeling their garment, are interviewed by judges about the specifics of their garment and receive constructive feedback. Each finalist prepares h/her own commentary that describes their garment's construction details, fabric, color and accessories as well as sharing new learning experiences. 4-H Fashion Revue is a Youth-in-Action project and is a learning experience for youth to acquire skills and knowledge of clothing and textiles, construction and consumerism.

Sew Away with IPCA

Janet Pray

EXPO RUNWAY, 2ND FLOOR PAVILION

Thur., Sat., 1:30-2:15 pm

Join the fun as members of IPCA entertain you with their latest unique and creative pattern designs. These designers are just like you – they love to sew, enjoy fashion and certainly want to be comfortable and stylish

at all times! There is no doubt you will enjoy this event as you plan to add new designs to your wardrobe. But wait, that's not all, we have a few surprises that are bound to bring on some laughs maybe even a few guffaws. Hint: what do you think would happen if eight talented pattern designers were stranded on a desert island?

Ticket to Paradise

IPCA

EXPO RUNWAY, PAVILION 2ND FLOOR

Sun. Only, 1:30 pm

Fashion, Fun and Prizes! Take a trip to paradise and be inspired by the talents of other sewing enthusiasts. Join the IPCA as they present the winning garments of the *Ticket to Paradise* contest. Using an IPCA members' pattern, sewing enthusiasts from across the country have stretched their imaginations and sewing skills to create show-stopping garments for this contest. The first 200 audience members will receive goodie bags, and those who took part in voting Thursday-Saturday will be entered in a drawing for prizes!

Talk is Chic

Louise Cutting & Linda Lee

EXPO RUNWAY, 2ND FLOOR PAVILION

Thur., Fri., Sat., 2:30-3:15 pm

Friendly competitors, Louise Cutting & Linda Lee keep their fingers on the pulse of wearable fashion. Their two companies create modern styles that work together. Need a wardrobe update but can't tell the difference between genuine style and passing trends? You're in luck! You'll be introduced to a variety of looks that blend with your current styles, plus great insight into what's coming next. Layering in winter is a necessity; in summer, it's an art. Learn to master it for interesting, eye-catching outfits year round. Fast fashion! Good looking fashion! Affordable fashion! We never had it so good.

Free Stage

Centrally located in the Showplex,
grab a seat and enjoy a variety of
topics.

⌚ 45 minutes

Free

Sewing Projects Revealed!

American Sewing Guild

Sat Only, 10:30 am

This event showcases the myriad talents of American Sewing Guild members throughout the Pacific Northwest and beyond. All skill levels are presented and include quilts, as well as garments for adults and children.

It's All About Pillows

*Karen Erickson, Home Fashions U/
Slipcover America*

Thu./Sat., 2:30 pm

Fri./Sun., 10:30 am

Pillows—whether they are on the sofa, a chair, the bed, or just lounging in the family room—can change the look of any home. Karen's Pillow Trunk Show is all about inspiring you to make functional, luxurious or memorable pillows. Great gift ideas!

Up-cycled & Re-purposed

Barbara Kirk, Esther's Fabrics

Fri./Sun., 9:30 am

At Esther's Fabrics we've taken up this trend in a big way. We've gathered oodles of projects to spark your imagination. You'll never look at an old or outdated garment the same way again!

Unleash Your Creativity

Linda MacPhee, MacPhee Workshop

Thu./Sat., 12:30 pm

Fri./Sun., 12:30 pm

Be inspired by REAL PEOPLE wearing real clothes. Dressy and casual jackets, our newest classic coat, dresses, knit separates, accessories and more—lots of new ways to use our classic patterns plus inspiration from our new ones. You'll leave wanting to get going and get sewing.

Dazzling Details Trunk Show

Marsha McClintock, Saf-T-Pockets

Patterns

Thu./Sat., 3:30 pm

SAF-T-POCKETS are patterns with pockets, fashion and function. Marsha's trunk show will dazzle you with easy details that provide stunning effects. Reversible garments that always button from the correct side, leather details, surface embellishments, cool pockets and more. Her clothes will take you to the mall or around the world.

The Fabric Whisperer

Lyla Messinger, L.J. Designs

Thu./Sat., 11:30 am

The best design comes from letting unique fabric characteristics talk to you. Join Lyla Messinger, the Fabric Whisperer, as she shows you ways to create inspiring design by choosing patterns and embellishments that work well with the fabric at hand. Learn how to develop your own eye for fabric whispering.

Abounding in Gowns

Laura Nash, Sew Chic Pattern Co.

Thu./Sat., 9:30 am

From simple to dramatic, see some of Laura's unique award-winning gowns designed specifically for weddings, shows, and competitions. Get an overview of the interior construction and techniques used to create the desired shaping and structure required for a beautiful effect.

Urban Threads: Purveyor of Fine Machine & Hand Embroidery Designs

*Niamh O'Connor, Urban Threads &
Kenny Christopher, Embroidery Library*

Thu. Only 10:30 am

Join Niamh O'Connor, Urban Threads, and Kenny Christopher, Embroidery Library, as they explore the wide and diverse world of embroidery. See groundbreaking projects that have "gone viral" through social media, including the iPhone corset, and the award-winning Baroque jacket!

Fab Fleece Accessories

Pattie Otto, Great Copy Patterns

Fri./Sun., 8:30 am

At Great Copy Patterns, we live and breathe FLEECE. Join Pattie as she shares her collection

of Fabulous Fleece Accessories to keep you and your family warm this winter.

Crazy Quilt Blocks

Karen Pharr, Karen Pharr Studios

Thu./Sat., 8:30 am

Fri., 3:30 pm

Learn the basics for creating crazy quilt blocks on a muslin base—using cottons, silks, velvets—all the fabrics you love. Embellish with threads, yarns, lace, buttons, etc. Use blocks to create quilts, jacket borders, purses, scarves and even a stick horse for tons of riding fun.

That is SO Not a Sweatshirt!

Londa Rohlfing, Londa's Creative Threads

Fri./Sun., 2:30 pm

Be absolutely WOWED as Londa models her vast collection of art-to-wear jackets that just happen to be on a sweatshirt base. Snap pictures til your hearts' content for your sewing inspiration!

How Stable Are You?

Suzy Seed, Sulky of America

Thu./Sat., 1:30 pm

Fri./Sun., 11:30 am

Suzy will guide you through the basics of stabilizing embellished projects. By learning the ABC's of why, when and where to use stabilizers, your projects will be pucker free and beautiful.

Doll Clothes R Sew Much Fun

Nadeen Ward, Dolls R Sew Fun

Fri./Sun., 1:30 pm

Sharing the wonderful world of doll clothes and using our embroidery machines and embellishment ideas to add more zing for no more bucks.

Teen Wardrobes on a Budget

Valley 4-H Club

Thu./Fri./Sat., 4:30 pm

Valley 4-H members will show how they've learned to shop at thrift stores and find deals to create wardrobes that are fashionable and versatile. About 1/3 of the garments modeled will be made by the 4-H members. Winners of the Make It With Wool Contest will also be featured.

Vendors

1 Source Publications
 A Quilter's Dream
 A Quilting Roadshow
 AllAboutBlanks.com
 American Sewing Guild
 Baby Lock USA
 Barb's Elegant Designs
 Barbara Willis Designs
 Beach Garden Quilts
 Bear Thread Designs
 Bee Unique Designs
 Bernina of America
 Billie's Designer Fabrics
 Birch Street Clothing
 Bird Brain Designs
 Bobbie G Designs
 Bo-Nash
 Bravo Bella
 Bubbles Menagerie
 Bullard Designs
 Byrds Nest Quilting, Inc.
 Calico Country Lynden, WA
 Carol's Zoo
 Carriage Country Quilts
 Clover Needlecraft, Inc.
 Crawford Designs
 Creations Unlimited
 Creative Feet
 Creative Textile Zone
 Custom Keepsakes
 Machine Embroidery
 Cutting Corners
 Dakota Collectibles
 Dana Marie Design Co.
 Designs With Lines
 Dutch Quilter
 Elna
 Embellishment Village
 Esther's Fabrics
 Fabric Studio
 Fashion Patterns by Coni
 Fibers Etc.
 Fine European Textiles
 Fine French Laces
 Flair Designs
 Flower Box Quilts
 Flynn Quilt Frame Co.
 G & I Design (Fasturn)
 G & P Trading
 Gail Patrice Design
 Ghee's
 Gita Maria
 Glitz & Glamour
 Great Copy Patterns
 Great Yarns

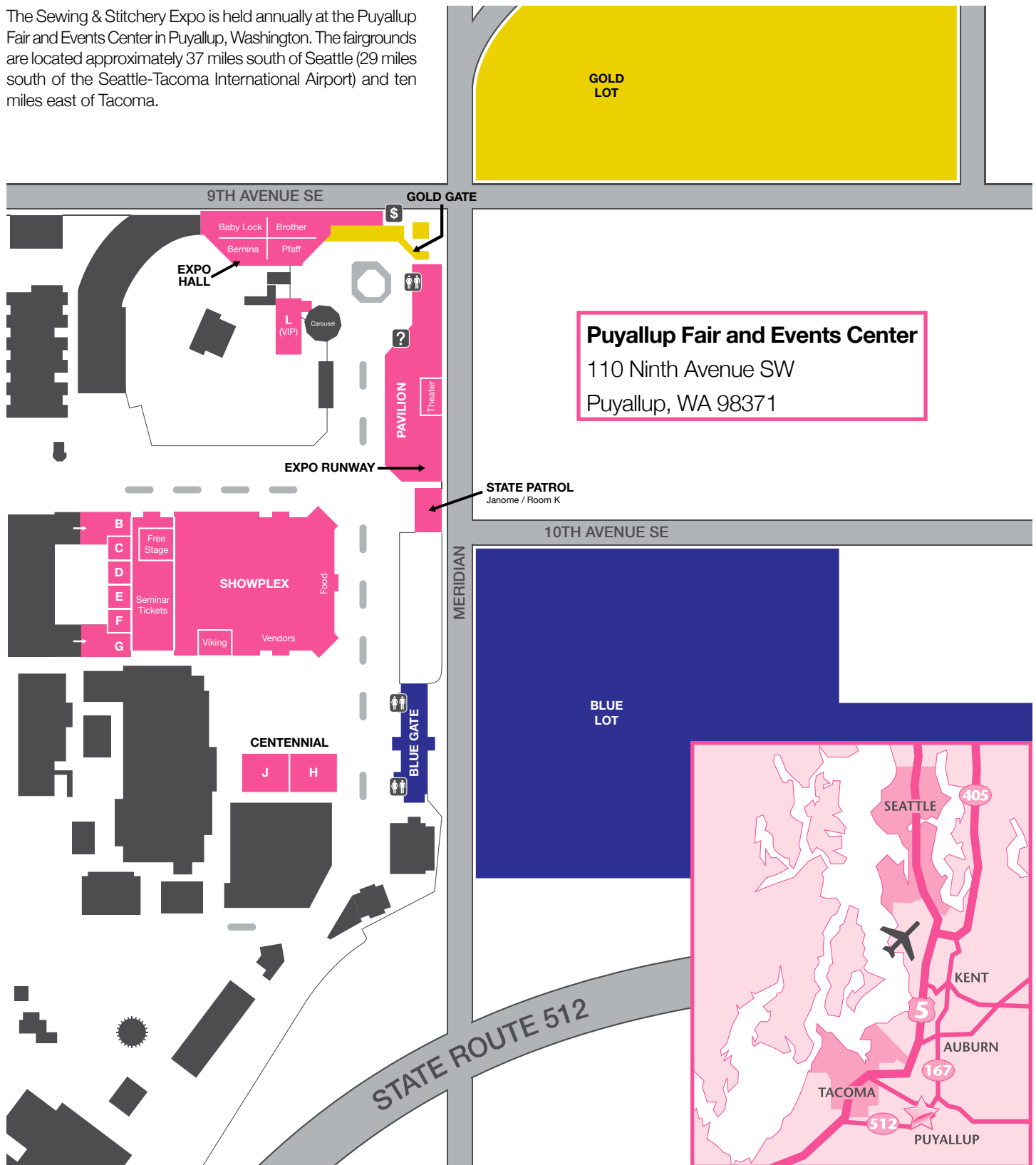
Hancock Fabrics
 Hancy Mfg Co/
 Full Line Stencil
 Heartway International
 Heirloom Quilts &
 Fabrics, Inc.
 Heirloom Stitches
 Helen Gibb Ribbonwork
 Hirsch International Corp
 Hofmann Originals
 Home Fashions U
 i-bead.com/i-stitch.com
 Indonesian Batiks
 Island Quilter
 Islander Sewing Systems
 J.J. Handworks/
 Pavelka Design
 Janome
 Japanese Textiles & Tours
 Jenny Haskins Products
 Just Imagination
 Kai Scissors
 Karen Pharr
 Kasuri Dyeworks
 KathyRuddy.com
 Koala Studios
 Labours of Love
 Lakadaisies
 Leilani Arts
 LH Enterprises
 Linda Kubik
 Little Windows®
 Brilliant Resin
 LJ Designs
 Londa's Creative Threads
 Longbranch Fiber Farm
 Loralie Designs
 MacPhee Workshop
 Marbled Arts
 Marcytilton.com
 Martelli Enterprises
 Mary Jo Hiney Designs
 Material Things
 McKay Manor Musers
 McKenna Ryan Showroom
 MeasureMatic
 Michell Marketing
 Momo-Dini Embroidery Art
 Mosaic Quilt Studio
 My Fair Lady
 Nancy Nix-Rice Wardrobe
 Consulting
 Nancy's Sewing Basket
 Nature's Footprint Inc.
 Nifty Thrifty Dry Goods

On The Surface
 Pacific Fabrics & Crafts
 Pacific Northwest Art
 School
 Palmer/Pletsch
 Pendleton Woolen Mills
 Store
 PerfectBorders.com
 Petite Plus Patterns
 Pieceful Designs
 Pincushion Boutique
 Professional Sewing
 Supplies
 Quality Sewing
 Quarry Books
 Quick Point Rulers
 Quilt Gallery
 Quilted Trillium
 Quilting From The
 Heartland
 Quilt In A Day
 Quiltsmart Inc
 QuiltWorks Northwest
 Reets' Rags to Stitches
 Renaissance Flowers
 Rochelle's Fine Fabric and
 Quilting
 Saf-T-Pockets Patterns
 Sara's Bloom
 Sew Artfully Yours
 Sew Chic Pattern Co.
 Sew It Up.com
 Sew N Go
 Sew Timeless
 Sew Wonderful Dreams
 Sewing Machine Service Co.
 Sewkeyse by Emma
 Seabrooke
 Shabby Fabrics
 Shades Textiles
 Shibori Dragon\

The Bali Network
 The Batik Butik by
 Color Visions LLC
 The Decorating Diva
 The Junk Jeans People
 The Pine Needle
 The Quilting Loft
 The Sewing Workshop
 The Steam Trunk
 The Stitchin' Post
 The Wool House
 TootsieP Yarns
 TreadleArt
 Treasures of the Gypsy
 Trims on Wheels
 TSC Designs
 Unicorn Books & Crafts
 Vaune
 Viking Sewing & Vacuum/
 Sylvia Fine Furniture
 Vogue Fabrics, Inc.
 WHIMS Watercolor Quilts
 Wild Ginger Software
 Winline Textile Products
 Wonderfil Speciality
 Threads
 Wooden Spool Designs
 Wynwoods Gallery & Shop
 Yarnflowers by Sweaterkits
 YLI Corporation
 Zundt Designs
 (Park Ave Dist)

Expo Map

The Sewing & Stitchery Expo is held annually at the Puyallup Fair and Events Center in Puyallup, Washington. The fairgrounds are located approximately 37 miles south of Seattle (29 miles south of the Seattle-Tacoma International Airport) and ten miles east of Tacoma.



For more information or to register: (866) 554-8559 or www.sewexpo.com

Conference Management
2606 West Pioneer
Puyallup, WA 98371-4998

I know you are as anxious for the 29th Sewing and Stitchery Expo as I am. Our Expo team has once again looked far and wide to bring you the very best in the industry so you can spend four days at the best sewing show in the nation. We have many new vendors, new speakers, and more seminars than ever before.

Baby Lock will sponsor our special Friday Night Live Event. Nancy Zieman and her Sous Chef, Mary Mulari invites you to the second "Kick It Up A Stitch" with a new menu and plenty of spice. They will share sewing and cooking ideas and keep you entertained for hours.

On Saturday evening, our Quilter's Night Out Event, sponsored by Janome, brings the "Hot Fuser Chicks". World-class quilt artists Frieda Anderson and Laura Wasilowski will share their favorite tips and techniques, as well as a gallery of their designs. You are in for a night of fun and...there will be singing!

The Coats and Clark Charity Event on Sunday is an all-new event. "Sew You Think You Can Blog??" is a live audition for the Sew It All television show. Five chosen finalists will present their projects on the Expo stage and you will vote for the two finalists. The winner will go to Colorado for an expense paid trip to the Sew It All studio. Your \$10 admission goes to Mary Bridge Children's Hospital in Tacoma. For details, see www.sewexpo.com, www.coatsandclarkssewingsecrets.blogspot.com, or www.sewitaltv.com.

Once again, we will collect pillowcases for Mary Bridge Children's Hospital patients. This is one of the most rewarding venues of the Expo. Last year, it was overwhelming to receive nearly 5,000. Thank you so much and we hope you will help us continue this effort.

We have added more hands-on pre-show classes on Wednesday. These classes sell out quickly so we encourage you to use on-line registration. After doing the math -- we had to increase the registration handling fee to \$8 per order to cover our costs. Please remember -- we open our ticket office every year and staff it with real people pulling every ticket for your order (you can pool your ticket purchases).

If you are a blogger, a special Pre-Expo event—the Schmetz Sewcial Blogger's Boot Camp—is February 27-28 at the Best Western Hotel in Puyallup. This special two day event for bloggers includes hands-on sewing classes at the Fairgrounds. For information: www.schmetzneedles.com/boot-camp-info.htm.

We are also improving the seminar door prize system. CTA's will collect your ticket stubs but each speaker will be responsible for the door prizes in their room. It is their option to provide a door prize. From now on, the prize will be pertinent to the class you just attended.

If you are a newcomer to the Expo, we send a special welcome to you. Please read this brochure carefully. Our website www.sewexpo.com will have updates regarding the show, you can access our blog, sign up for the on-line newsletter, see speaker bios, vendor lists, hotel information, etc.



I am looking forward to seeing you at the Expo!

Joanne Ross, Director