

Dear friends,

As you can see, we have changed the look and focus of our newsletter. We will be creating a new edition every two months. Hopefully, the shorter time period will keep the news more current. We also hope the new layout will be easier to read and use. Our 60 Minute classes will continue, and we are also offering Quilting I in Saturday sessions. You will receive emails about our special project classes each month. Thanks to Debbie Allen for all the hard work publishing our new newsletter!

Groups and organizations in Richfield are coming together to sponsor a special event this fall in our community centering around the Civil War, the Underground Railroad, and the part Richfield played in this rich history. To kick off our part in this event, we are sponsoring a challenge for a small work done with authentic Civil War quilt blocks. You have all summer to complete the project which will be displayed in September. In our shop, we will have a list of blocks and the minimal rules you should follow to be eligible for prizes. You do not need to use Civil War reproduction fabrics; any fabric is suitable. The only requirement will be size (not larger than 42" length or width) and the inclusion of at least one authentic Civil War block. We will have the complete rules in the shop and will keep you posted through the summer as to the additional activities and programs that will take place in early September, 2013.

Thanks to all who participated in our recent shop hop. Watch for our second annual Quilter's Schoolhouse which will be held in August. Come and see us soon!

Ronnie, Debbie, Debbie, Pam, Pam, Cathy, Kathleen and Sallie

THE POLKA DOT PINCUSHION

4131 W. Streetsboro Rd.
Richfield, OH 44286

Phone 330.659.0233

www.pdpincushion.com

HOURS

Monday 12 - 5

Tuesday 10 - 5

Wednesday 10 - 5

Thursday 10 - 8

Friday 10 - 5

Saturday 10 - 4

Sunday Closed



MARK YOUR CALENDARS

- ★ North Coast Needlers 13th Biennial Quilt Show, May 18 - 19, Rocky River, Ohio
- ★ NQA 44th Annual Quilt Show, June 27 - 29, Greater Columbus Convention Center, Columbus, Ohio
- ★ United Quilt Guild 2013 Quilt Show, July 19 - 21, Salem, Ohio
- ★ The Ohio One Stop Shop Hop, July 19 - 20 & October 18 - 19, Dayton, OH
- ★ Streetsboro Quilt Guild's 31st Annual Quilt Show, October 4 - 5, Streetsboro, Ohio

Featured Quilt

"Twister"

Using either one layer cake or four charm packs, sew a quick but complicated-looking quilt. Suitable for children's fabrics, flannels, reproduction fabrics or anything that catches your eye, this simple quilt can be made to any size by adding a border or borders. Pre-class sewing and purchase of the Twister template is required. Class fee is \$25.



Wednesday, May
22nd, 10:30am -
1:00pm
or
Thursday, June 6th,
5:30 - 8:00pm

Quilting I

Learn the basics of quilting, including fabric selection, rotary cutting, sewing consistent seam allowances, backing, binding and quilting the finished top. The quilt uses the split rail block and can be a lap quilt or baby quilt. Class fee is \$109.

Five 2-1/2 hour classes, Tuesdays, May 21st through June 18th, 10:30am-1:00pm or

Three Saturday workshops, June 1st & 8th, 9:00am-1:00pm and June 15th, 10:00am-12:00pm

Quilting II

Create a sampler quilt of 12 different blocks using triangles and other geometric shapes. Also learn to cut and apply sashing and cornerstones. Class fee is \$109.

Five 2-1/2 hour classes, Tuesdays, May 21st through June 18th, 2:00-4:30pm

MAY 2013

Monday	Tuesday	Wednesday	Thursday	Friday	Saturday
		1	2	3	4
6	7	8	9 10:30 Hand Applique	10	11 1:00 Scalloped Borders
13	14 10:30 Year to Crow 1:00 English Paper Piecing	15 10:30 60 Degree Table Runner 1:00 Stippling	16 10:30 Sew Spooky 6:30 Year to Crow	17 1:00 Wild & Woolly Women	18 10:30 Sew Spooky
20	21 10:30 Quilting I 2:00 Quilting II	22 10:30 Twister	23 6:30 Binding	24 10:30 Embroidery	25 10:30 Dresden Plate 1:00 Rotary Cutting
27 CLOSED	28 10:30 Quilting I 2:00 Quilting II	29 1:00 Beginning Machine Quilting	30 6:30 Quick Fuse	31 10:30 Wool Applique	

60 MINUTE CLASSES

- ★ 60 Degree Table Runner - 5/15 at 10:30am or 6/14 at 2:00pm
- ★ Binding - 5/23 at 6:30 or 6/17 at 1:00pm
- ★ Dresden Plate - 5/25 at 10:30am or 6/27 at 10:30am
- ★ Embroidery - 5/24 at 10:30am or 6/29 at 1:00pm
- ★ English Paper Piecing - 5/14 at 1:00pm or 6/29 at 10:30
- ★ Hand Applique - 5/9 at 10:30am
- ★ Quick Fuse - 5/30 at 6:30pm or 6/7 at 10:30am
- ★ Rotary Cutting - 5/25 at 1:00pm or 6/10 at 1:00pm
- ★ Scalloped Borders - 5/11 at 1:00pm or 6/24 at 1:00pm
- ★ Stippling - 5/15 at 1:00pm or 6/1 at 2:00pm
- ★ Wool Applique - 5/31 at 10:30am or 6/15 at 2:00pm

All 60 Minute Classes are \$9 each

Beginning Machine Quilting

Learn the basics of machine quilting and finish up those small projects. This class covers the fundamentals to get you started and then moves on to the fun of quilting. You will practice stitch in the ditch, echo quilting, stippling and some simple continuous line motifs. Class fee is \$39.

Two 2-1/2 hour classes, Wednesdays, May 29th and June 5th, 1:00 - 3:30pm

Learn to Paper Piece

Learn the basics of paper or foundation piecing by practicing on small blocks that can be used in a larger project or together as a small quilt. Use the teacup and tea pot foundation papers that are included with this course to make a delightful small wall hanging or table topper. Class fee is \$39.

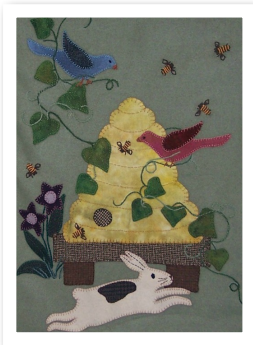
Two 2-1/2 hour classes, Wednesdays, June 12th & 19th, 1:00 - 3:30pm

JUNE 2013

Monday	Tuesday	Wednesday	Thursday	Friday	Saturday
					1 9:00 Quilting I 2:00 Stippling
3	4 10:30 Quilting I 2:00 Quilting II	5 1:00 Beginning Machine Quilting	6 5:30 Twister	7 10:30 Quick Fuse	8 9:00 Quilting I
10 1:00 Rotary Cutting	11 10:30 Quilting I 2:00 Quilting II	12 1:00 Learn to Paper Piece	13	14 2:00 60 Degree Table Runner	15 10:00 Quilting I 2:00 Wool Applique
17 1:00 Binding	18 10:30 Year to Crow 10:30 Quilting I 2:00 Quilting II	19 1:00 Learn to Paper Piece	20 6:30 Year to Crow	21 1:00 Wild & Wooly Women	22
24 Dear Jane 1:00 Scalloped Borders	25	26	27 10:30 Dresden Plate	28	29 10:30 English Paper Piecing 1:00 Embroidery

BLOCK OF THE MONTH PROGRAM

A Year To Crow About, a twelve month block of the month program, is a whimsical quilt (69" X 86") from Red Rooster Fabrics and Jacqueline Patton. This pieced quilt offers a small printed block portraying a mischievous crow causing trouble each month of the year. If you can't use another quilt, choose another option which will be a calendar format with each finished block mounted on a pieced background to hang individually from a wrought iron 26" hanger. A \$15 registration fee will be refunded on when you pick up your last block. Cost: \$23 a month for twelve months. May blocks will be available for pick up on Tuesday, May 14th with help sessions on May 14th at 10:30am and May 16th at 6:30pm. June blocks will be available for pick up on Tuesday, June 18th with help sessions on June 18th at 10:30am and June 20th at 6:30pm.



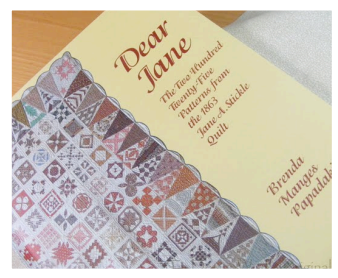
RICHFIELD'S WILD AND WOOLY WOMEN

Do you love to embroider with wool? Do you enjoy wool applique? Join the RW3's, a group dedicated to working with wool. The group meets every third Friday at 1:00pm to share their latest projects, tips and tricks!

May's meeting will be Friday, May 17th at 1:00pm. June's meeting will be Friday, June 21st at 1:00pm.

Grab your favorite wool project, or pick a new one up at the shop, and join the RW3's to share your love of all things wool!!

POLKA DOT JANES



If you have a Dear Jane quilt started or have always wanted to tackle this Civil War beauty, join us on the last Monday of each month. The group provides shared wisdom, support and encouragement!

May's meeting will be held at Furnace Run's Brushwood Pavilion, 9am - 5pm. If you are not a regular member and would like to attend this meeting, please call the shop and let us know you will be attending. June's meeting will be Monday, June 24th, 10:00am - 12:00pm.

Return Policy

No returns on books, magazines, patterns, kits, blocks of the month or fabric. Other products that remain in an unused, un-opened condition in original packaging can be returned for a store credit within a 30 day period from the time of purchase. Gift and consignment items can be returned for a store credit within a 30 day period from the time of purchase. Reduced items are final sale.

Class Registration & Cancellation Policies

When you register, you will receive a supply list for that particular class, stating supplies needed and what precutting (if any) is required. Frequent Buyer Points are not awarded for class tuition, but a registered student will receive a 15% discount on items purchased for a particular class.

If the Revere School System cancels classes due to weather, classes at The Polka Dot Pincushion will be postponed to a new time. If the shop cancels a class, a full refund will be given. If you need to cancel your spot in a class, you need to give the store a three day notice of your cancellation. You will then receive a store credit to take another class. If you do not attend the class, or do not give adequate notice that you need to cancel, you forfeit your class fee.