

The Quail's Quill

News From Quail Run Needlework



August 2012

*Specializing In
Custom, Innovative
Finishing*

Mercado del Lago Center
8320 N. Hayden Rd.
Suite C112
Scottsdale, AZ 85258

480-551-1423
480-551-1425 (fax)
800-635-9750 (toll free)

www.quailrun-inc.com

Email

quailrun@quailrun-inc.com

Hours

Monday-Friday
10:00 a.m.-5:30 p.m.
Saturday
10:00 a.m.-4:30 p.m.
Closed Sunday

Owner

Susan E. Barlow



From Susan's Desk

It is always nice to escape the heat and go somewhere cool. I escape to California on the weekends and love to ride my bike down to the farmer's market for fresh vegetables, wonderful scones and lemon curd. I always stop at my favorite flower shop; it is refreshing and quaint with beautiful flowers for my table. We affectionately refer to it as the "Bike through the Window Shop". I always look at the wonderful floral designs and think about how I would stitch them. Stitching on one of the balconies, watching the beach, water and boats, listening to the seals and the foghorn is always so relaxing. It is hard to leave to come back and be me again on Mondays!



The "Bike through the Window Shop" (nicknamed for the obvious reason).

Back at the shop, you can see the new designs from Columbus Market. It is always so hard to choose. If by chance I did not buy the one you just have to have, we can order it, write a stitch guide and kit it with threads/beads/embellishments just as we can for any piece in the shop.

I am doing a pilot class of a Navajo inspired design by Victoria Nessel of High Desert Designs that combines elements and colors derived from several traditional Yei masks. The student letter I received states this class "includes techniques of canvas painting, padded appliqué, cutwork, twist construction, couching and attachment of found objects". I will post pictures on Facebook for you to learn from and enjoy when permitted.

(cont'd page 2)

**WE HOPE YOU'LL JOIN US ON FACEBOOK. WE'LL BE
KEEPING YOU UP TO DATE ABOUT CLASSES, TRUNKS SHOWS, NEW
ITEMS, AND MUCH, MUCH MORE~**



This month, I am taking another two classes on beading with Carolyn Sherman. I am looking forward to this and bringing back more knowledge to the shop. Her "Mission Garden" class was an excellent lesson on making vines, leaves, flowers and ristras from beads. I have presented some of these techniques in this month's "Bring a Canvas to Life". You can make these beaded designs on your pieces. If you want some help, we will be glad to schedule a time for you to learn these methods.

The new Silk Lane colors are scrumptious. This is one of my favorite threads. Just a little hint, if I find it to heavy for a designs, I just ply it down to 2 threads of the silk and 2 of the metallic instead of using the 4 strands of each. This saves having the regular and petite in every color in my stash.

Take a look at our classes for the fall. I am so looking forward to the Sedona, Broom Parking and the Chuck wagon Coffee classes offered by three excellent teachers. Come join us and have fun!

See you soon!



Susan

FLOWERS- FLOWERS- FLOWERS

I love flowers and so am instantly drawn to floral canvases. Here are two of my "projects in motion" as my friend Sandi refers to them.

Beautiful Flowers By Maggie-model at Columbus TNNA



Butterflies and Magnolias by Colors of Praise

My new blog, **Sonoran Desert Stitching** is where I am enjoying sharing current needlework trends and tips for you to enjoy. Here is a sample of what I am posting.

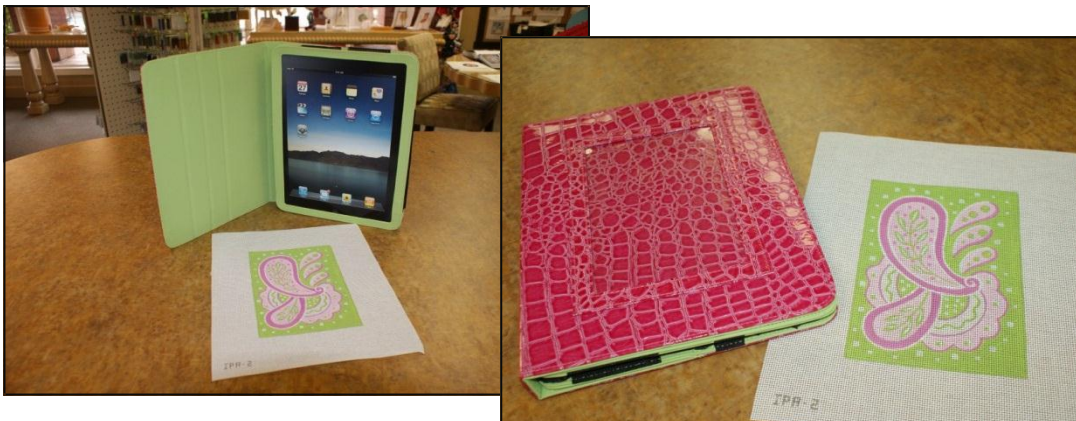
Navajo Rug inspired Design

I spent a wonderful day in a pilot class and had a great time. I will be able to share the pictures of the piece and the class with you once the class is taught later this summer. An additional treat was the viewing of beautiful framed pieces done by a talented stitcher, Jo Enright who has died. This one will be on display at the EGA seminar in Phoenix in 2014 and is entitled "Walk in Beauty". It was a class at the 2001 EGA Seminar in Newport Beach based on Navajo rugs where the students developed their own design. DMC floss and wools were the threads used on congress cloth. It is beautifully stitched and even more stunning when seen in person. I share this with you in honor of the lovely lady and hope you find inspiration from her work.

<http://sonorandesertstitching.blogspot.com>



New in the Shop



These days, where we go, the iPad goes. So why not make it stylish, while protecting it at the same time. These covers come in an assortment of colors, and the canvases compliment in an array of designs.

What a special gift this would make!

New in the Shop



This Bargello book, by Finger Step Designs, not only contains all you need to know about Bargello, it also visually provides you a full array of contemporary designs.

Traditionally, Bargello has been a standalone design, typically used for upholstered pieces.

However, with today's stitcher challenging yesterday's norms, Bargello patterns are being used to enhance design areas of the canvas, and added as borders and backgrounds. (Take a look at some of the designs in clothing at Chicos- definitely Bargello!)



Wouldn't you love to be able to change your tote's needlepoint as the mood strikes you? Now you can. With this attractive, everyday bag you simply insert your finished canvas into the inside pocket. And don't be concerned about spills or snags to your canvas, the clear plastic protector provides worry-free use.



Double Duty. These gift tags take gift wrapping to new heights. Once it has been used as a gift tag, the receiver can put it to work as an ornament or bookmark.

Quail Run Needlework, Inc.

8320 N. Hayden Road, Suite C112, Scottsdale, AZ 85258

In Case You Missed It

The invitation is always open to stop by the shop when we hold our **Japanese Embroidery and Beading classes**. We encourage you to view the amazing pieces being created under the tutelage of **instructor, Mary Alice Sinton**. However, in the event you missed seeing this July class, we've captured some images of the projects and class moments.

(To be fully appreciated, these pieces are best viewed in person. Our photographs, unfortunately, fail to capture their true beauty.)



L. Instructor, Mary Alice Sinton—R. Student, Sandy V.



This beaded 'Peacock Purse' will be taught in the future. It is considered an intermediate level project.



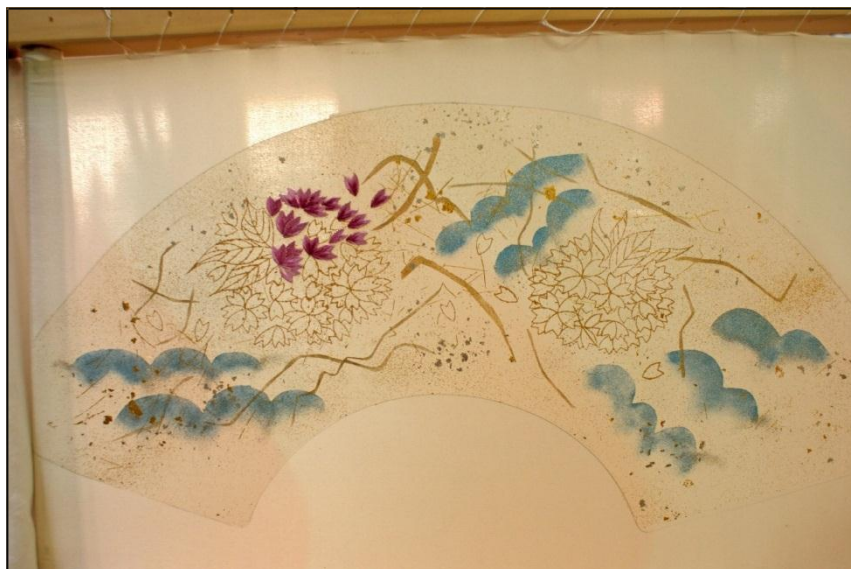
Instructor, Mary Alice, shares her work in progress. At left, is a completed pillow, the design called Exotic Elegance. To the right, is Mary Alice's work. To enrich the colors of the beads, she chose a beautiful beige silk for the pillow.

In Case You Missed It



Arlene A's, piece is absolutely stunning! It's stitched with silver thread to contrast the charcoal gray, silk background.

We tried to capture the beauty of this by blowing up a section, but the picture doesn't do the work justice.



Brenda S. is creating this Japanese fan—and creating is the appropriate description. She started with a blank piece of silk, stenciled the design, applied the gold leaf, painted the blue clouds, and has now begun the stitching.

Complete will involve folding the fan, accordion style, and mounting it on wood.

We can't wait to see this completed!

For more information about Japanese Beading and Embroidery, and Mary Alice's background in this art, visit her website at: www.bluebonnetstudio.com

If you would like to learn embroidery or beading, Japanese style, you can sign up for one of Mary Alice's classes. She teaches at Quail Run several times throughout the year. Just check our calendar or call the shop for dates. Also, to promote your learning of this unique art, we hold 'Stitch and Chat' sessions for our Japanese arts students periodically throughout the month.

Quail Run Needlework, Inc.

8320 N. Hayden Road, Suite C112, Scottsdale, AZ 85258

Ask Susan

The question this month is from **Donna Quest, New Mexico.**

"I never know what needle to use. Can you give me some guidelines?"



Needles have two purposes:

- ☐ the needle holds the thread to pull it through the canvas and
- ☐ the needle opens the fabric to allow thread to pass through the canvas.

Canvas can be like sandpaper to threads. I hear many complaints from customers who have stitched with a silk or silk/wool blend complain that it became fuzzy. This is because too small a needle was used. The thread was stressed passing through the canvas because the needle was not large enough to open the fabric. Also, customers say that they cannot get a thread through the canvas. Again, this is because they are using too small a needle.

Here is a guideline for Tapestry needle sizing for canvas and congress cloth:

#28 - Beading

#26 - Congress cloth

#24 - Congress cloth

#22 - Canvas 18 mesh

#20 - Canvas 14-16 mesh

#18 - Canvas 12-13 mesh

#16 - Canvas 10 mesh

If you find a thread is shredding even with the listed size of needle, try one size larger. So if you're working on 18 mesh canvas, use a #20 instead of a number #22 especially when you are stitching with a velvet or metallic thread. You will find this opens the hole a bit more so your thread passes through the holes easier.

To determine what size needle will work best on your canvas, place the needle into the canvas hole. If it falls through, it is too small. If it is difficult to pull through, then it is too large. With the correct size needle, the widest part of the eye should slightly open the hole in the fabric. Don't be afraid to change needles. That is what stitching is all about, using techniques that work best for you.

(By the way, just like with beads, the larger the needle number size, the smaller the needle. Go figure! #*?#)

For her question, Donna received a pair of Bohin scissors.

Email your question and if it is picked for the next newsletter you will also receive this gift.

Email a question to: **quailrun@quailrun-inc.com**

Please write "Newsletter Question" in the subject line.

Quail Run Needlework, Inc.

8320 N. Hayden Road, Suite C112, Scottsdale, AZ 85258

Take A Bow

We are happy to share the finished pieces that come through the shop. We hope you enjoy seeing them, and we hope they provide ideas and inspiration.



Bunn L is a marvelous stitcher! And generous as well. This framed piece will be a gift to a very special family member.

The addition of a small plaque personalizes this great gift. It reads:

"Come on Down"
Best Friends
Mag and Dotti

Needlework by Bun Lamb

"COME ON DOWN"
BEST FRIENDS
MAG AND DOTTI
NEEDLEWORK BY BUN LAMB



We don't know how stitcher **Emily G** intends to display this wonderful pumpkin—perhaps as a centerpiece, or set among prized possessions on a shelf, or even part of an autumn display. Regardless, it is sure to stand out and receive many compliments.



Cynthia P's bookmarks are fun; and yes functional as well. We wonder how long it take her to find the bumblebee and dragonfly to match both in design and scale.

Take A Bow



The beautiful bird's nest design, and relaxed chenille border make a stunning stool. It calls out to have a seat or prop up your feet. Great job, **Gracellen G.**, stitcher.



Robyn C.'s Star of David challah cover is obviously a labor of love. The intricacy of the design took patience and creativity.

Carolyn S. has been busy adding to her gifts of holiday ornaments. Fun pieces!



Take A Bow



Funky coffee purse stitched by Nicki M. *Coffee anyone?*

For your beach enthusiasts -

I can feel my toes in the sand and the cool ocean breeze! Beach brick cover stitched by Mary F.



Look from more beach canvases in our cool summer window display!



These Disposable Coffee Cup Designs Take A Month To Make-

COFFEE CUP ART

<http://www.flickr.com/photos/13895571@N04/sets/72157614580046629/>

Boo Kitty is stitched .Look for the finished piece next month.



“ I cannot count my day complete until
Needle, thread and fabric meet. ”

Author unknown

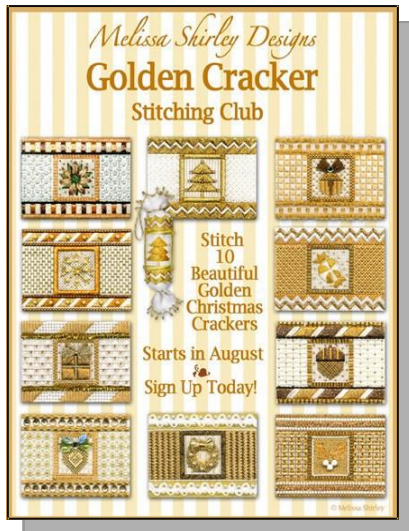
Quail Run Needlework Inc

8320 N Hayden Rd Suite C112 Scottsdale, AZ 85258

Did You Know?

Q: *Why does canvas come in different sizes? What is mesh size?*

A: Needlepoint is categorized by the number of threads per linear inch (vertically or horizontally—they will be the same). When one refers to 18 mesh canvas, they are describing a canvas that has 18 threads per inch. This is considered a fine mesh size. Designers and stitchers like 18 mesh because they can achieve good detail on it; however, it can be difficult to see without good light or even magnification. Ten mesh canvas is considered large and is suited mostly to larger projects such as rungs. A compromise between detail and speed of stitching is 13/14 mesh canvas which is the size normally recommended for beginning stitchers.



***The Golden Cracker Club
begins in August***

We are very excited to be among a network of needlepoint shops across the country to bring you this fabulous stitching club.

The club includes ten beautiful and unique designs by this much respected designer, Melissa Shirley, and wonderful stitch guides by Robin King.

Call the shop to sign-up.



I admit it; I'm a "collector" of purses, totes, satchels, clutches (you name it). I have to share my latest—coffee motif on one side and martini motif on the other. How fun is that!

Susan 

"If I stitch fast enough, does it count as aerobic exercise?" - Author Unknown

Bring A Canvas To Life—Southwest Adobe

I learned some wonderful techniques in a classes with Carolyn Sherman and Lois Kershner and used them on *Southwest Adobe*, a Quail Run canvas.

Susan



This month's project has some ideas on bead embellishing. The canvas is called Southwest Christmas and will be a class piece for the shop as well as one of the needlework markets. There are many options for embellishing this canvas, so here are just a few.

WOODEN DOOR

For the wooden door, a piece of ultra suede was painted and then appliquéd.

First, make two color copies of the canvas. Use one as the template to cut out the shape of the door. You can trace the door edge around the template. It is best to cut before painting and let the piece dry thoroughly. To attach this, use very small stitches around the edges with a 26 or 28 Sharp needle and one strand of matching floss. For the door handles, bullion in an overdyed floss works well. Around the doors, #8 triangular beads in a wood tone were used. I attached one half the door and the beads/

BOUGAINVILLEIA

Little rose flower sequins were used for the flowers, attached with a clear #14 bead. Green #11 beads were used for the leaves.

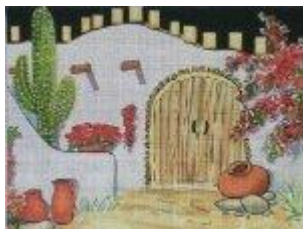
CHILI RISTRA

To achieve this, you thread about one 1 1/4" of green 14/15 beads on a 6" thread. Add one red drop shaped bead then pass the thread up through the last green bead and add a drop bead. Pass the needle through the second green bead and add another drop bead. Thread the needle through the third bead and add one bead, then pass through the fourth bead and one drop bead. Continue up the green beads until you reach the top. You can add branched stems of beads at the top to complete the look. This makes a great looking ristra.

RED FLOWERS IN POT

Use red 15 beads and green #11 beads for this area. Thread 1" of green beads for the green area. Then add 4 red beads, circle around and pass through the first bead forming a tiny flower. Add 4 more red beads using the same process then come through the first green bead. Working on one side of the green beads, add the small circles to fill the area.

These ideas can be used on many canvases and there will be lots of other techniques in the class. So consider joining us for this fun class. Many thanks for the techniques here I learned from classes with Lois Kershner and Carolyn Sherman. Take their classes if the opportunity arises as you will learn so much for these two lovely and talented ladies.



[Click here to view techniques](#)

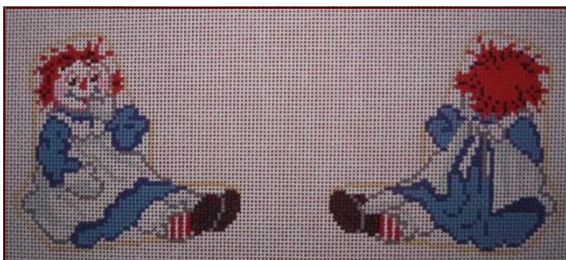
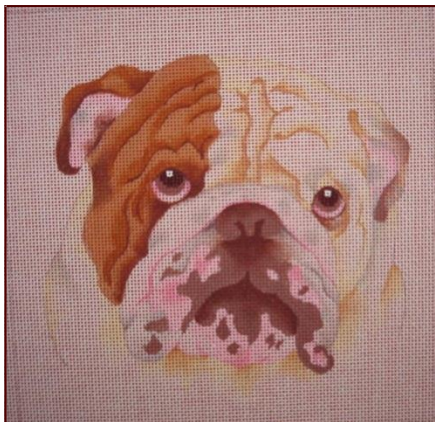
Look for more ideas for beading and other embellishments in future newsletters.

Quail Run Needlework, Inc.

8320 N. Hayden Road, Suite C112, Scottsdale, AZ 85258

July Trunk Show

The Point of It All trunk show always arrives with wonderful canvases. Their designs are fun and at the same time beautifully stitch painted for beautifully finished products. If you're looking for a 'saying', this is the trunk show to shop.



Quail Run Needlework, Inc.

8320 N. Hayden Road, Suite C112, Scottsdale, AZ 85258

Southwest Ornament of the Month

This **Cactus Snowman** canvas will add charm to your holiday décor and is a great way to celebrate where we live. The red bandana, saguaro arms and Arizona's beloved quail truly exemplify the Southwest.



New Quail Run Designs

This month we share with you the third kimono in the series of five of new Quail Run designs. The richness of the gold makes this canvas visually exquisite.



Sonoran Desert Stitching

New on the web at

<http://sonorandesertstitching.blogspot.com>
Enjoy the pictures and needlework news.

Susan



Current topics on my blog:

- Color Confidence
- Memory Ribbon
- Coffee Purse
- Chuck wagon
Coffee Class
- Navajo Rug
Inspired Design
- Baby Cake by
Rebecca Woods
and much more!

Quail Run Needlework, Inc.

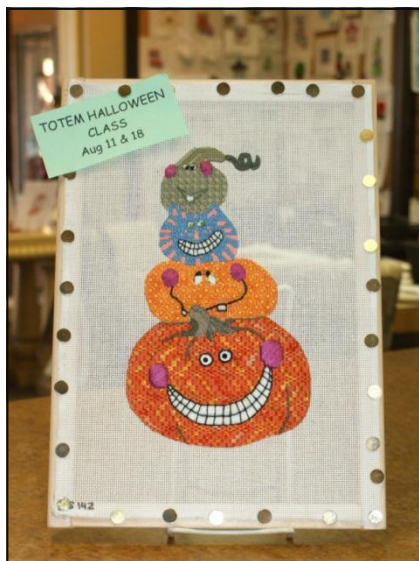
8320 N. Hayden Road, Suite C112, Scottsdale, AZ 85258

Totem Pumpkins **Quail Run Teachers' Series**

This canvas screams fun—fun—fun! What a great way to celebrate Halloween, or the fall season in general, than with this whimsical, colorful canvas from **Quail Run Designs**.

It also provides an opportunity to experience some new stitches and threads.

Finished, this would make a wonderful pillow or framed piece for the entryway credenza.



Saturday, August 11th
Saturday, August 18th

Funky Birds **Quail Run Teachers' Series**



Not only is this **Alice Peterson** canvas eye-catching; the design perfectly lends itself to a full variety of stitches and threads, beading and assorted techniques.

This class will provide both the beginning and experienced stitcher the opportunity to tackle something new, and add to their stitching experience.

Saturday, August 25th

NEW!

Broom Parking ***National Teachers' Series***



This 2-day class is *sensational* on multiple levels. First it brings you this clever and hilarious canvas—one sure to be the talk of friends and family. Secondly, the stitch guide and thread selections are spot on. (We love the texture and look of the brooms. And who wouldn't be drawn to the bumps on the toads' body?) But perhaps number one, this class is brought to us by **Carolyn Hedge Baird**, teacher, stitch guide creator, and needlepoint author. Carolyn is widely recognized for her experience and expertise and comes to us from Chaparral Needlepoint in Houston, Texas.

'Broom Parking' promises to be a fabulous class and sign-ups have already been coming in. So if you're interested, we encourage you to call promptly to ensure seating.

Saturday, October 13th

Sunday, October 14th

Chuck Wagon Coffee ***National Teachers' Series***

Sherry Bray will be at the shop on October 19th, 20th & 21st.

Sherry loves a challenge! Her desire is to spread her love for needlepoint and share stitching freedom with others, while learning along the way. This is a beautifully stitched piece with so many great techniques. You can see the gorgeous model in the store. Come and join the friendly and talented Sherry for this class. You will not be disappointed!

Saturday, October 20th

Sunday, October 21st

Special Canvas Enhancement Class
Friday, October 19th

NEW!



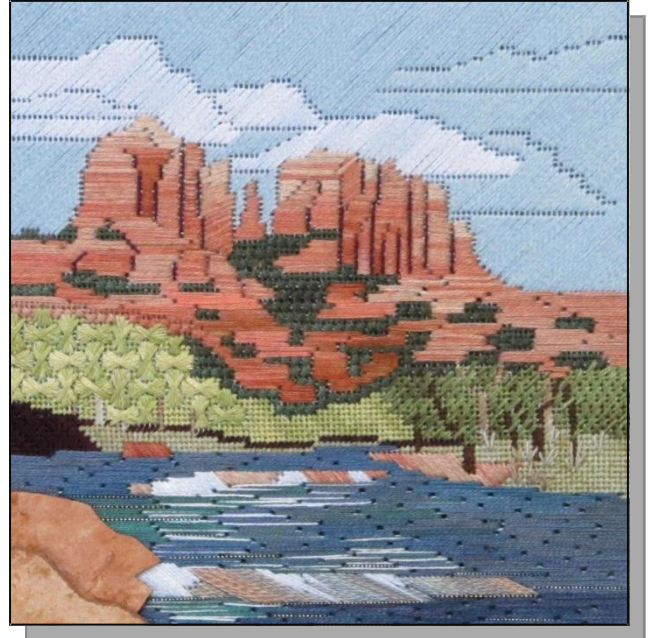
Sedona a Threadscape ***National Teachers' Series***

Lois Kershner is a well-known national teacher. She designs and embroiders wonderful scenes taken from nature. In this special class, the red rocks of Sedona are beautifully represented with thread. Following, Lois describes her inspiration for this unique art.

"An enjoyment and appreciation of the beauty of nature and natural forms is the motivating inspiration behind my designs. Essentially I paint with thread, creating the illusion of light, shadow, perspective, and texture through thread and stitch selection and placement."

"In my 'threadscapes' I use canvas embroidery to record memorable places and experiences much as others use travel journals, photo albums, and sketch books."

To view more of her art, and learn about the artist, visit Lois's web site: **www.loiskershner.com**



Friday, November 9th
Saturday, November 10th

REGULARLY AVAILABLE CLASSES & GROUP STITCHING

- | | |
|----------------------------------|--|
| <u>Stitch & Chat:</u> | Come join fellow needlework enthusiasts for a few hours of stitching.
<i>Tuesdays & Thursdays, 1:00 to 4:00</i> |
| <u>Stitch Studio:</u> | Bring a new or old project to life with a wonderful array of threads and amazing stitches.
<i>Mondays 1:30-3:30, Wednesdays 10:30-12:30, Fridays 1:30-3:30, Saturdays 10:00 to noon, and 1:00 to 3:00</i> |
| <u>Private Lesson:</u> | A one-on-one experience is the perfect way to get started learning the art of needlepoint.
<i>Tuesdays and Thursdays, 1 hour intervals throughout the day.</i> |
| <u>Needlepoint 101</u> | Learn basket weave & 12 unique stitches using 12 different threads.
<i>Second Saturday of the month, 10:00 to noon and continued 1:00-3:00.</i> |

Classes are held throughout the month. Check our calendar for dates & times.
Canvas, fibers and instructional material are included in all classes. Seating is limited so early sign-up is recommended.

Quail Run Needlework Calendar

August 2012

Sun	Mon	Tue	Wed	Thu	Fri	Sat
			1 Stitch Studio	2 Stitch & Chat Private Lesson	3 Stitch Studio	4 Stitch Studio
5 Closed	6 Stitch Studio	7 Stitch & Chat Private Lesson	8 Stitch Studio	9 Stitch & Chat Private Lesson	10 Stitch Studio	11 Totem Halloween XXXX Needlepoint 101 Stitch Studio
12 Closed	13 Stitch Studio	14 Stitch & Chat Private Lesson	15 Stitch Studio	16 Stitch & Chat Private Lesson	17 Stitch Studio	18 Totem Halloween XXXX Stitch Studio
19 Closed	20 Stitch Studio	21 Stitch & Chat Private Lesson	22 Stitch Studio	23 Japanese Embroidery Stitch & Chat 10:00-4:00 Stitch & Chat Private Lesson	24 Stitch Studio	25 Funky Birds 10:00-4:00 Japanese Embroidery Stitch & Chat 10:00-4:00 Stitch Studio
26 Closed	27 Stitch Studio	28 Stitch & Chat Private Lesson	29 Stitch Studio	30 Stitch & Chat Private Lesson	31 Stitch Studio	

Quail Run Needlework, Inc. 8320 N. Hayden Road, Suite C112, Scottsdale, AZ 85258

**If you have questions about any of the classes, or would like to schedule a class, please call the shop.
480-551-1423 Toll Free 800-635-9750**