

THE QUAIL'S QUILL

Specializing in Custom, Innovative Finishing | February 2013



CONTACT US:

480-551-1423
480-551-1425 (fax)
800-635-9750 (toll free)

www.quailrun-inc.com
quailrun@quailrun-inc.com

HOURS

Monday-Friday
10:00 a.m.-5:30 p.m.

Saturday
10:00 a.m.-4:30 p.m.

Sunday
Closed

**QUAIL RUN
NEEDLEWORK**
Mercado del Lago Center
8320 N. Hayden Rd.
Suite C112
Scottsdale, AZ 85258

OWNER
Susan E. Barlow



Visit us on
Facebook.
We'll keep
you up-to-date
about classes,
trunk shows,
new items and
MUCH MORE!



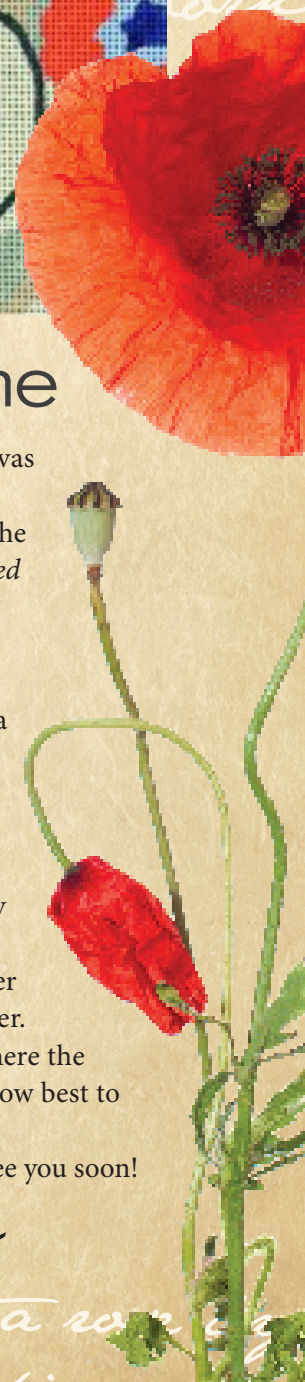
A Special Place and Time

By the time you read this, I will have been to California for the Winter Needlework and Knitting Market. Several designers sent emails with pictures of new designs that were purchased. I completed my hunt for new threads and colors, new tools along with these new designs. It was a busy time as I took classes each day before market opened, and then selling my wholesale line, *Quail Run Designs* during market hours. After close of the show each day, I attended meetings with other shop owner and wholesale vendors. It was a great time to catch up with friends in the industry and share ideas. I completed two classes from Lucy Barter from the *Royal School of Needlework*, a ribbon work class and a gold work sampler class, where we worked with a variety of gold and silver thread to learn couching and cutwork among other

stitches. Next, a seashell canvas class provided more "Light Stitching" techniques from the talented team from *Associated Talents*. My final class was a unique design by *DJ Designs* of a vintage style bird cage, when finished, will become a round hinged box that is about 5" tall by 3" diameter. Susan Portra taught this class. I shared pictures on my blog and Facebook of my class experiences and a few are highlighted on the Winter market page in this newsletter. Now, I am busy planning where the new threads will hang and how best to showcase the new canvases.

Enjoy the newsletter and see you soon!

Susan



TAKE A BOW



Drum Roll, Please ... More Amazing Work!

We are happy to share the finished pieces that come through the shop. We hope you enjoy seeing them and hope they provide ideas and inspiration.



(back stitching)

Challah cover Stitched by Judy B.
as a Bat Mitzvah gift for her daughter



Funny Sign
Stitched by Elaine C.



Funky Cat
stitched by
Mary L.



Gorgeous Mindy Purse Stitched by
Diane M.

en patiently and the pattern will come out all
like the embroidery. ~ Oliver Wendell Holmes

WINTER MARKET HIGHLIGHTS



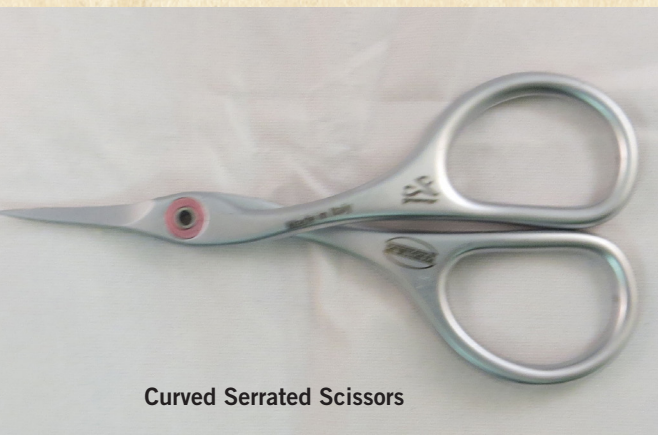
Fans



Magnets



Jeweled Hearts



Curved Serrated Scissors



Key Fobs



Deviled Egg!



Sparkly
cardinal



Raggedy
Anne and
Andy



Little Trees
Ornament

work at our pattern; it will come out a
little better than the original



Woodland Santa



Counting Pins



More Magnets



Christmas Friends



Tree Ornament



Fun Totes



Jeweled Hearts



Nursery
Rhyme Rug



SONORANDESERTSTITCHING.BLOGSPOT.COM

ENJOY THE PICTURES AND NEEDLEWORK NEWS!





ASK SUSAN

Mary L. of Illinois asks:
**"How do I convert
a cross stitch
chart to
needlepoint?"**

*I have a birth sampler I
want to do as a needlepoint
piece for my new niece.*

*This is a great question
and one I get asked often.*

*Here are two ways
to do this:*

1 COUNTED CHART METHOD

Use one stitch for each square on the chart as you would in any charted needlepoint design. You may find the stitched piece is not as wide but may be longer than the original design because tent stitches are not square. You should avoid patterns stitched over two threads as these usually have partial stitches.

Patterns

that have many partial stitches and backstitching will not work because you cannot do half a tent stitch.

2 LINE DRAWN DESIGN METHOD

The second way is to draw the areas from the chart onto the canvas. You have a line drawn design and can use different stitches and threads to enhance the areas just as you would a painted design.

*Enjoy your project, Mary
and enjoy your new scissors.*

NEEDLEPOINT 101

Learn the basics of basketweave along with 12 other stitches using 12 different threads, Your choice of colors and your initial in the center . A fun canvas that can be finished as a pillow, framed picture or attached to a tote bag. This class is offered monthly. **Call the shop for details 480-551-1423.**



SONORANDESERTSTITCHING.BLOGSPOT.COM

ENJOY THE PICTURES AND NEEDLEWORK NEWS!





The Fuzzy Effect

This is my next class project in Japanese Embroidery as my Canadian family liked the maple leaf design. The designer, Midori Matsushima began her Japanese Embroidery study at Jissen University, Tokyo in early 1970's and also completed an apprenticeship from Master Kiyoshi Nozawa. By 1975 she established her own studio and has been teaching Japanese Embroidery since and currently resides in north London, UK. She began the study of Kinsai (Gold Leaf) in the 1990's, which elevated her embroidery creations to a new level. The Maple Leaves is a study in Fuzzy Effect Technique and showcases the incredibly brilliant 16 suga silks she imports directly from Kyoto, Japan. A charcoal couching silk is used to establish branches among the brilliantly colored leaves.

NEW DESIGNS

Playing Southwest Music

Southwest Lady with Guitar is a new Quail Run Design. It is 8"x11' on 18 mesh . It comes with a fun stitch guide that uses new threads and stitches. Look for a finished picture of this piece which will be a pillow.



**ASK
SUSAN**

Send your questions to quailrun@quailrun-inc.com and receive your gift, a pair of Bohin Scissors.

Melissa Shirley
Designs

♥
Sweet
Heart
Cupcake
Club

♥
Stitch
6 Adorable
Sweet Heart
Cupcakes

By
Laurie
Walden

♥
Sign
Up Today!

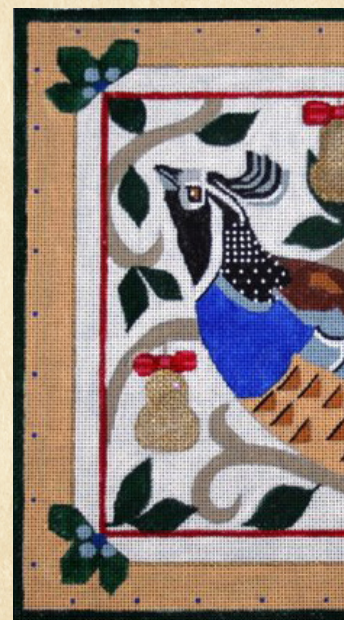


TRUNK SHOWS

MELISSA PRINCE DESIGNS
www.melissaprincedesigns.com

Birds and Florals

Enjoy these timeless, classic needlepoint designs which include birds, florals, Tuscan tiles, antique snuff bottles, seasonal pieces, Native American, and both evening and casual handbags.



Melissa Shirley Designs
Fancy Forest Topiary Club

Featuring 5 Elegant Trees
With Stitch Guides from Rebecca Booth
Starting in Spring 2013

For more information and sign-ups contact

Quail Run Needlework

480 551-1423 or quailrun@quailrun.com

CLASS CENTRAL



FEBRUARY 11-14 **GOLDWORK** by Tanya Berlin Needlepainting: February 14 (Burrowing Owl Class)

Tanja Berlin is an exceptional teacher and designer. She teaches in an informal manner so that students feel relaxed.

Tanja demonstrates each stitch and explains all stages of the design. She visits each student individually to check their progress and give guidance so everyone in class gets her attention! You will enjoy the wide selection of samples she displays. A selection of about 40 different kits will be available to purchase during her classes.

Sign up soon! Class space is limited and many spots are filled from previous students.

FEBRUARY 5 & 6

Old Crow Class Taught by Sandra Arthur

Time: 10:00 -4:00 PM

Choose one of three designs:
Night Cap, Fast Friends and *Squashed*.
A great class for you to take!



MARCH 22 AND 23 **JOURNEY** by Margaret Bendig

A counted design in these colors or you own colors.

Journey is a design created by talented Margaret Bendig following her visit to a Frank Lloyd Wright building where she was inspired by the stained glass windows. The design is 11" x 11" on 18-count eggshell canvas. It can be done in cotton or silk with metallics and an overdyed thread. Stitches include Waffles, Rice, Woven Satin, Interrupted Waffle, Framed Scotch, Cashmere Brick, Log Cabin Mosaic, Framed Brick, Reversing Scotch and Wild Rice Stitch, to name a few.



FEBRUARY

CLASSES AND EVENTS WITH QUAIL RUN

SUNDAY	MONDAY	TUESDAY	WEDNESDAY	THURSDAY	FRIDAY	SATURDAY
			6 Old Crow Class Stitch Studio 10:30-12:30	7 Stitch and Chat 1:00-4:00 Private Lessons 10-11, 11-12 1-2, 2-3	8 Stitch Studio 1:30-3:30	9 Needlepoint 101 10:00-3:00 Stitch Studio 10-12, 1-3
10		12 Tanya Berlin 10:00-5:00 Stitch and Chat 1:00-4:00 Private Lessons 10-11, 11-12 1-2, 2-3	13 Tanya Berlin 10:00-5:00 Stitch Studio 10:30-12:30	14 Tanya Berlin 10:00-5:00 Stitch and Chat 1:00-4:00 Private Lessons 10-11, 11-12 1-2, 2-3	15 Stitch Studio 1:30-3:30	16 Stitch Studio 10-12, 1-3 Golden Cracker Stitching Club
17	18 Stitch Studio 1:30-3:30	19 Stitch and Chat 1:00-4:00 Private Lessons 10-11, 11-12 1-2, 2-3	20 Stitch Studio 10:30-12:30	21 Japanese Emb 10:00-4:00 Private Lessons 10-11, 11-12 1-2, 2-3	22 Stitch Studio 1:30-3:30	23 Japanese Emb 10:00-4:00
24	25 Stitch Studio 1:30-3:30	26 Stitch and Chat 1:00-4:00 Private Lessons 10-11, 11-12 1-2, 2-3	27 Stitch Studio 10:30-12:30	28 Stitch and Chat 1:00-4:00 Private Lessons 10-11, 11-12 1-2, 2-3	1 Stitch Studio 1:30-3:30	2 Needlepoint 101 10:00-3:00 Stitch Studio 10-12, 1-3
3	4 Stitch Studio 1:30-3:30	5 Stitch and Chat 1:00-4:00 Private Lessons 10-11, 11-12 1-2, 2-3	6 Stitch Studio 10:30-12:30	7 Stitch and Chat 1:00-4:00 Private Lessons 10-11, 11-12 1-2, 2-3	8 Stitch Studio 1:30-3:30	9 Needlepoint 101 10:00-3:00 Stitch Studio 10-12, 1-3

If you have questions about any of the classes or would like to schedule a class, please call the shop at 480-551-1423.