

THE QUAIL'S QUILL

Specializing in Custom, Innovative Finishing | November 2012

CONTACT US:

480-551-1423
480-551-1425 (fax)
800-635-9750 (toll free)

www.quailrun-inc.com
quailrun@quailrun-inc.com

HOURS

Monday-Friday
10:00 a.m.-5:30 p.m.

Saturday

10:00 a.m.-4:30 p.m.

Sunday

Closed

QUAIL RUN NEEDLEWORK

Mercado del Lago Center
8320 N. Hayden Rd.
Suite C112
Scottsdale, AZ 85258

OWNER

Susan E. Barlow



Visit us on
Facebook.
We'll keep
you up-to-date
about classes,
trunk shows,
new items and
MUCH MORE!

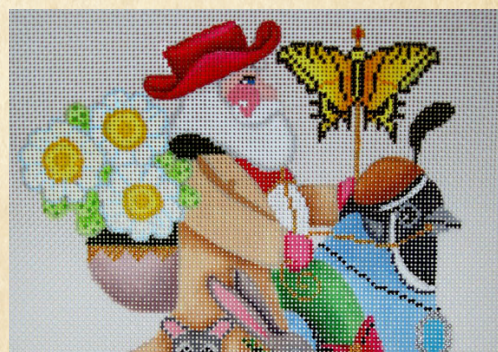


Relaxing and Giving Thanks

This is a busy time with holidays this month and next. There is still time to get items finished, so keep stitching and bring in to the shop when you are able. In time for the holidays there are lots of great gift items for Stitchers—scissors, magnets, tool caddies as well as the always popular gift certificate.



This is one of my favorite times of the year because we get to see the family members of our Stitchers and hear how much they love the finished item stitched by the person who will receive their gift certificate.



See
full
canvas
inside

Brenda Stofft is a very talented designer. The exclusive design she has done for Quail Run Needlework ties together the flora and fauna of Arizona with her usual touch of whimsy and humor. Check the dates for this special class and join us. Her trunk show will be here in the new year as well.

Try and take some time for yourself during this busy time. Do not stress over unfinished projects as the New Year is coming to give you more time!

We encourage you to stop in with any questions and to escape the Holiday rush. The gals and I are eager to chat with you and be of help.

Susan

TAKE A BOW

Holiday Goodies!

We are happy to share the finished pieces that come through the shop. We hope you enjoy seeing them, and we hope they provide ideas and inspiration.



A special stocking for Chace, a Quail Run Designs, stitched by Carol G.



A cat lover's pillow stitched by Jan E.



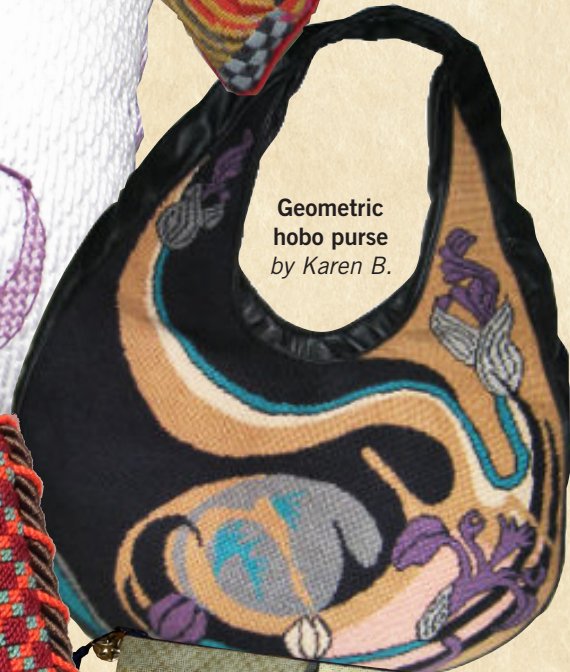
Princess "K" pillow by Mina C.



Yarmulke by Merrill O.



Klimt Design pillow by Joanne G.



Geometric hobo purse by Karen B.



Pumpkin with a easel back by Mina C.
(front & back view)



Tallis bag by Merrill O.

THANKSGIVING SWAG

A few of my favorite Thanksgiving canvases:



THANKSGIVING PILLOW
13 MESH 51/4" X 7"

GIVE THANKS
18 MESH 13" X 13"





ASK SUSAN

Cathie R. from San Diego asks:

"How to I keep my needlepoint looking smooth and uniform?"

This question is about stitch tension. There are six techniques that will help you achieve uniform needlepoint stitches:

1

NEEDLE

Your needle needs to be clean. It should open the canvas mesh slightly when you are stitching. This will allow the stitch to lay flat. Remember to let your needle hang and unwind every three or four stitches to remove the twist of the thread for a smoother look.

2

THREAD LENGTH

If you use too long a thread, it will get knotted when it is pulled repeatedly through the canvas.

Also, it will wear and create a dull appearance. Your stitch tension will look uneven. Use thread lengths of 12-18"

3

STRIP YOUR THREADS

Always separate the fibers and put them back together before you start stitching. This gives a fuller more even stitch. Pull each thread out of the bunch separately, place the tops together, and then run your fingers down the threads to bring them together.

4

DO NOT SPLIT THREADS

When a hole is occupied by a stitch, bring your needle up or down without splitting the stitch that is in place. You can use your needle to make a space for new stitch to fit.

5

RETHREADING

Do not rethread your needle halfway across a row. This will create an irregular effect on the front when you anchor the thread on the back. So finish the end of a row as you get near the end of the thread and start the next row with a new thread.

6

MAINTAIN THE ANGLE OF YOUR STITCH

You will get an uneven appearance if you mix the direction of threads. Mixing continental and basket weave stitches will create an uneven stitch tension. Try to keep the stitch you are using the same.

Practice makes perfect when it comes to stitch tension. Try to keep these techniques in mind and they will become good habits that produce smooth needlepoint stitches in each finished project.

ASK SUSAN

Send your questions to quailrun@quailrun-inc.com and receive your gift, a pair of Bohin Scissors.

VISIT MY BLOG:

SONORANDESERTSTITCHING.BLOGSPOT.COM

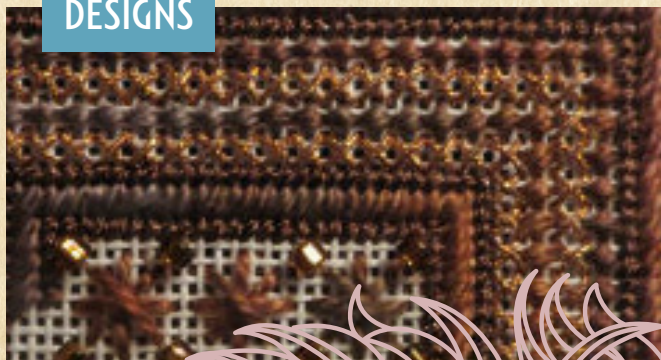
ENJOY THE PICTURES AND NEEDLEWORK NEWS!





Red Oriental Tote

This gorgeous red tote was stitched by me and I had it specially designed to hold my Japanese Embroidery tools and thread cases. Here is the original canvas and the finished result. I will enjoy showing it off to my Japanese Embroidery group.

NEW
DESIGNS

Copper Sonrisa

A Counted Needlework Design

One of my assignments in my Teacher Certification course it to design a small project. Here is a picture of this design that will be available through Quail Run Designs. I used rich browns and copper, appropriate for Copper Sonrisa. It could be easily stitched in your colors. Or as a gift, in someone's special colors.



DEDE DESIGNS
www.fleurdeparis.com

Dede Ogden was first involved with needlework as a child with the help of a caring aunt. After studying interior design at the University of Kansas 40 years ago, her needlework interests bloomed again. In these years she has developed an internationally known business, producing handpainted canvaswork designs.

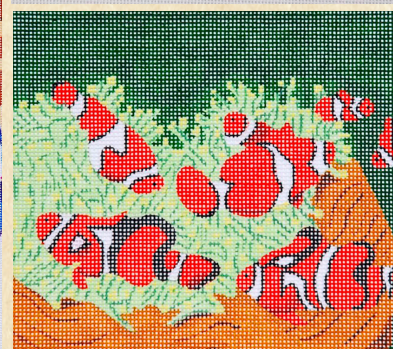
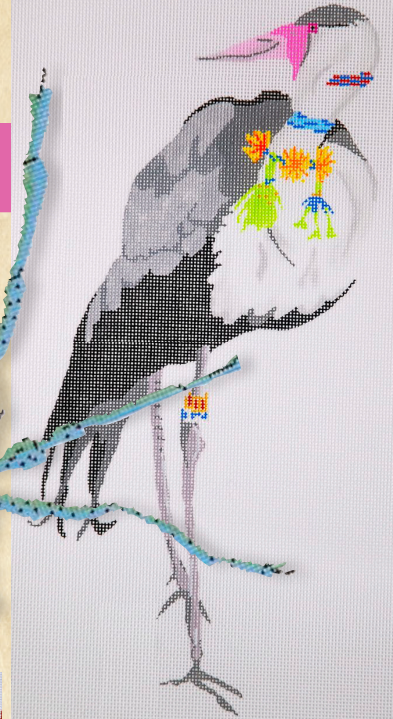
Early in her business, she found that individuals and shops needed assistance in canvas embellishment and shading techniques. So a teaching career also bloomed which has included Callaway Gardens Needle Arts School, the American Needlepoint Guild and Embroidery Guild of America national seminars and local chapters nationwide.

Dede has been honored to judge various needlework exhibits. Dede also conducts stitching retreats in California, the Caribbean, England, China and Canada to advance knowledge at all levels in canvaswork. Her stitching designs and techniques can be seen in numerous needlework publications and stores. Dede was also the winner of the Ten Award from the National Needlework Association in 2004.

Continued on following page ...



TRUNK SHOWS



From Ellen Brown, Designer of Waterweave

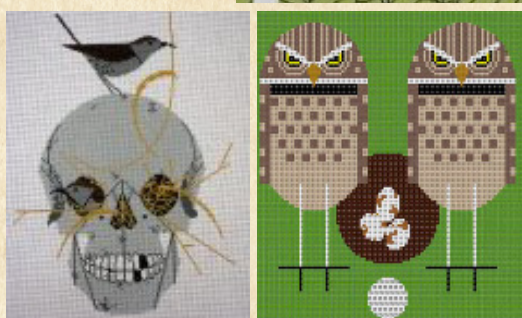
I designed and stitched my first needlepoint canvas for my Dad when I was 12. I think it was on 8 stitches-per-inch canvas or some such, with a very basic design in primary colors, and of course, it's main feature was the word "Daddy" in large letters. I designed something that I wanted to stitch. Today I design canvases for a different audience, but am still inspired by the things and people I have an interest in. And I always try to paint canvases that I want to stitch myself.

Waterweave canvases tend to fall into two general categories: whimsical or natural. The whimsy comes from my love of color, animals, children's books, and general silliness. Somehow those intersect to create a pig wearing cowboy boots, a parrot sporting a birthday cake hat, or a fish in sunglasses. The beauty of nature inspires me to create a leaf sampler, feather canvas, or leafy seadragon. Being a SCUBA diver, I have a great love for anything under the sea. Life under water, on land, and in the air is awe inspiring and makes me want to strive to recreate that on canvas for myself and others to stitch and enjoy.

WATERWEAVE BY ELLEN
www.waterweave.com



TRUNK SHOWS CONTINUED



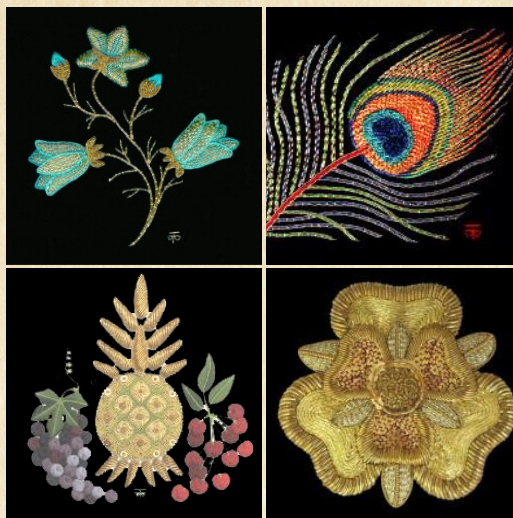
CHARLEY HARPER DESIGNS www.treglowndesigns.com

Ranging from bugs and birds to all creatures of land and sea from the bountiful imagination of the artist, animal lovers and fans of Charley alike will be thrilled with this collection. "Charley Harper was best known for his Modernist illustrations. His art is widely published in books and posters, and most people would probably recognise his work. This Rainforest Birds Charley Harper needlepoint design is one of our most popular needlepoint adaptations of this famous artist's work.

Charley Harper lived in Cincinnati and passed away in 2007. His stylized designs are hugely popular because of their design simplicity and effective use of color. Charley Harper epitomises the concept of 'less is more'. He called his style 'minimal realism' because he didn't try to reproduce exactly what he saw, instead he presented the component parts in bare form – and very effectively as well."



CLASS CENTRAL



FEBRUARY 11-14 GOLDWORK by Tanya Berlin Needlepainting: February 14 (Borrowing Owl Class)

Tanja Berlin is an exceptional teacher and designer. She teaches in an informal manner so that students feel relaxed.

Tanja demonstrates each stitch and explains all stages of the design. She visits each student individually to check their progress and give guidance. so everyone in class gets her attention! You will enjoy the wide selection of samples she displays. A selection of about 40 different kits will be available to purchase during her classes.

Sign up soon! Class space is limited and many spots are filled from previous students.



Artwork from
Borrowing Owl
Class with
Tanya Berlin

JANUARY 25 & 26 Exclusive Design by Brenda Stofft Time: 10:00 -4:00 PM

This design combines the flora and fauna of Arizona with a touch of humour typical of Brenda's designs. Call the shop for details.



DECEMBER 7 Holiday Teapot Class

Time: 10:00 -3:00 PM
Three adorable teapots to chose from- do one or all three. Join us to for great stitches and fun!

18 Mesh, Size 5"x5"

NOVEMBER

CLASSES AND EVENTS WITH QUAIL RUN

SUNDAY	MONDAY	TUESDAY	WEDNESDAY	THURSDAY	FRIDAY	SATURDAY
				1 Stitch and Chat 1:00-4:00 Private Lessons 10-11, 11-12 1-2, 2-3	2 Stitch Studio 1:30-3:30	3 Stitch Studio 10:00-2:00
4	5 Stitch Studio 1:30-3:30	6 Stitch and Chat 1:00-4:00 Private Lessons 10-11, 11-12 1-2, 2-3	7 Stitch Studio 10:30-12:30	8 Japanese Emb. 10:00-4:00 Stitch and Chat 1:00-4:00 Private Lessons 10-11, 11-12 1-2, 2-3	9 Japanese Embroidery 10:00-4:00 Stitch Studio 1:30-3:30	10 Japanese Emb. 10:00-4:00 Needlepoint 101 10:00-3:00 Stitch Studio 10-12, 1-3
11 Japanese Embroidery 10:00-4:00	12 Japanese Embroidery 10:00-4:00 Stitch Studio 1:30-3:30	13 Stitch and Chat 1:00-4:00 Private Lessons 10-11, 11-12 1-2, 2-3	14 Stitch Studio 10:30-12:30	15 Stitch and Chat 1:00-4:00 Private Lessons 10-11, 11-12 1-2, 2-3	16 Sedona, a Thread- scape taught by <i>Lois Kershner</i> 10:00-4:00 Stitch Studio 1:30-3:30	17 Sedona, a Threadscape taught by <i>Lois Kershner</i> 10:00-4:00 Golden Cracker Stitching Club
18	19 Stitch Studio 1:30-3:30	20 Stitch and Chat 1:00-4:00 Private Lessons 10-11, 11-12 1-2, 2-3	21 Stitch Studio 10:30-12:30	22 Stitch and Chat 1:00-4:00 Private Lessons 10-11, 11-12 1-2, 2-3	23 Stitch Studio 1:30-3:30	24 Japanese Embroidery 10:00-4:00
25	26 Stitch Studio 1:30-3:30	27 Stitch and Chat 1:00-4:00 Private Lessons 10-11, 11-12 1-2, 2-3	28 Stitch Studio 10:30-12:30	29 Japanese Emb. 10:00-4:00 Stitch and Chat 1:00-4:00 Private Lessons 10-11, 11-12 1-2, 2-3	30 Stitch Studio 1:30-3:30	

If you have questions about any of the classes or would like to schedule a class, please call the shop at 480-551-1423.

