

# 2013 State of the City

Brigham City Mayor

Dennis J Fife

February 7, 2013

# PRIORITIES

- 1) **Fiscal Responsibility**
- 2) **Essential Services** - water, power, sewer, storm water, waste collection, streets, police, emergency services (ambulance, fire, preparedness)
- 3) **Quality of Life** - including parks, recreation, swimming pool, library, senior center, museum, golf course, etc.
- 4) **Economic Development** - support of current businesses and diverse base of jobs

# FISCAL RESPONSIBILITY

- **Reduced Budget**  
(**\$468,000 Revenues over Expenses**)
- **Utilities transfer to General Fund limited**
- **Refinanced General Obligation Bond**  
(**Saved \$174,000 and reduced to 5 years**)
- **Paid off Utility Bond with 11 years to go**  
(**Saving \$202,000 in interest**)
- **Fire Department ISO Rating (5 to a 4)**



EAGLE MOUNTAIN  
GOLF COURSE



# Services Provided

## Public Works

Streets

Water

Sewer

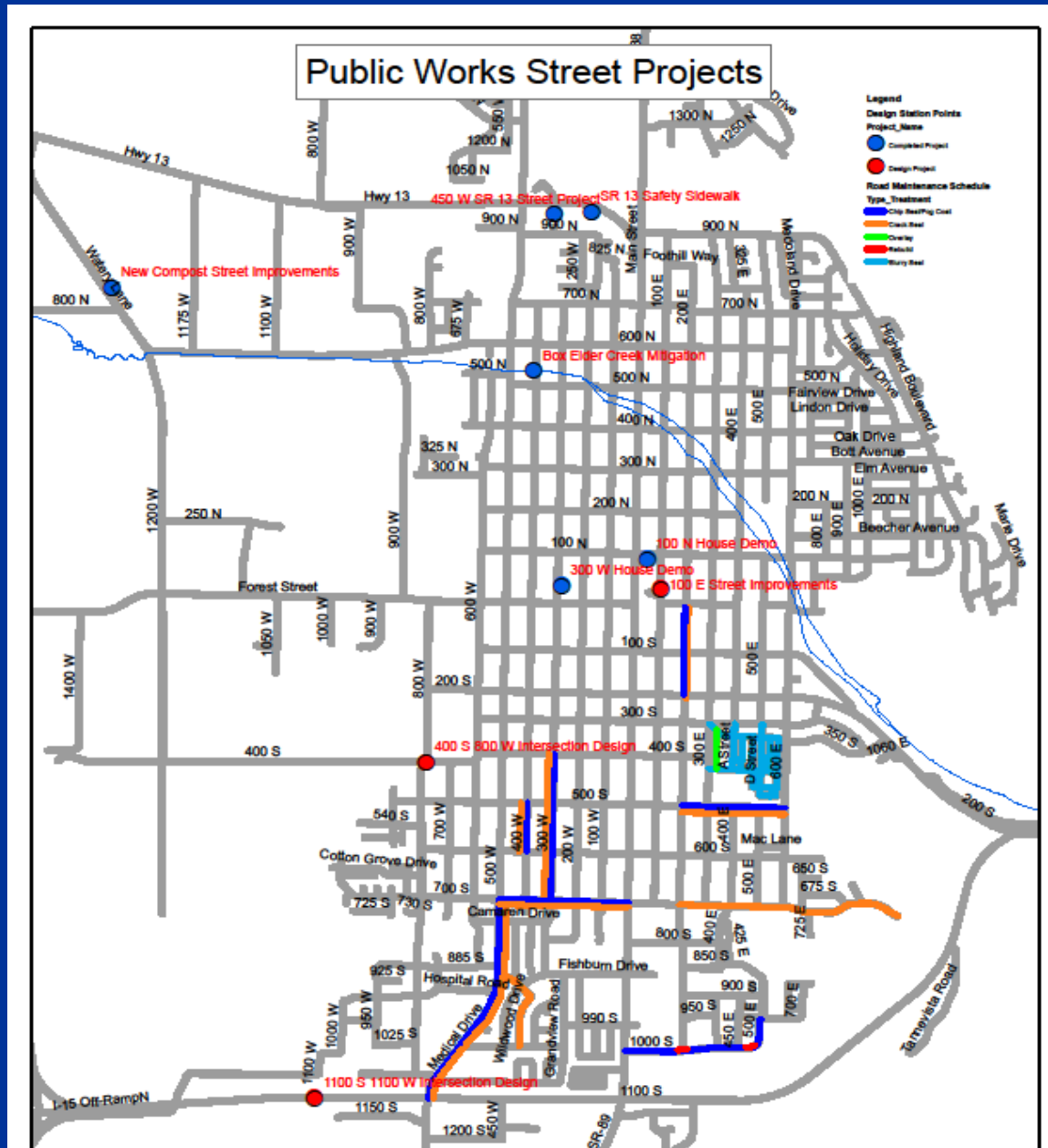
Storm Drain

Waste Collection

Recycle/Green Waste

Parks

# Street Projects



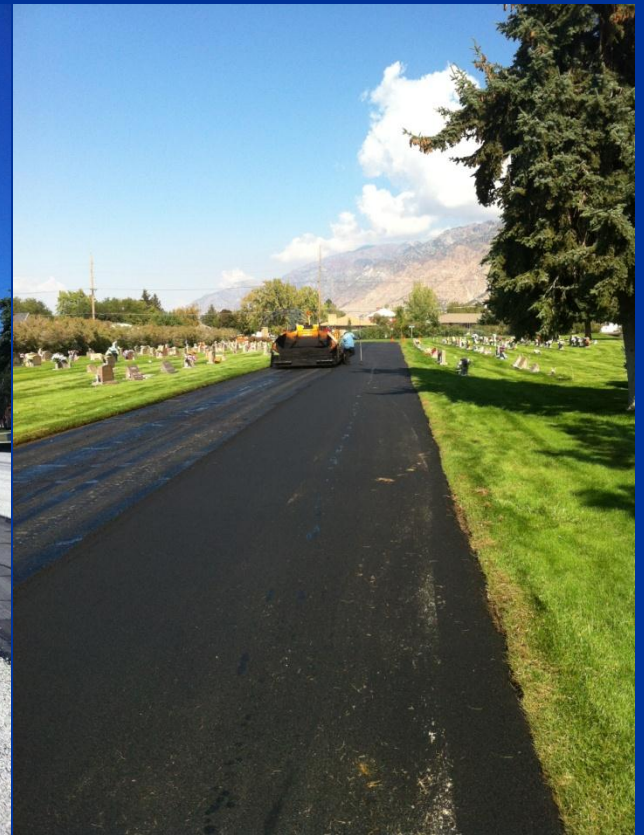
# Street Projects



450 West  
SR13  
New Road  
Sidewalk

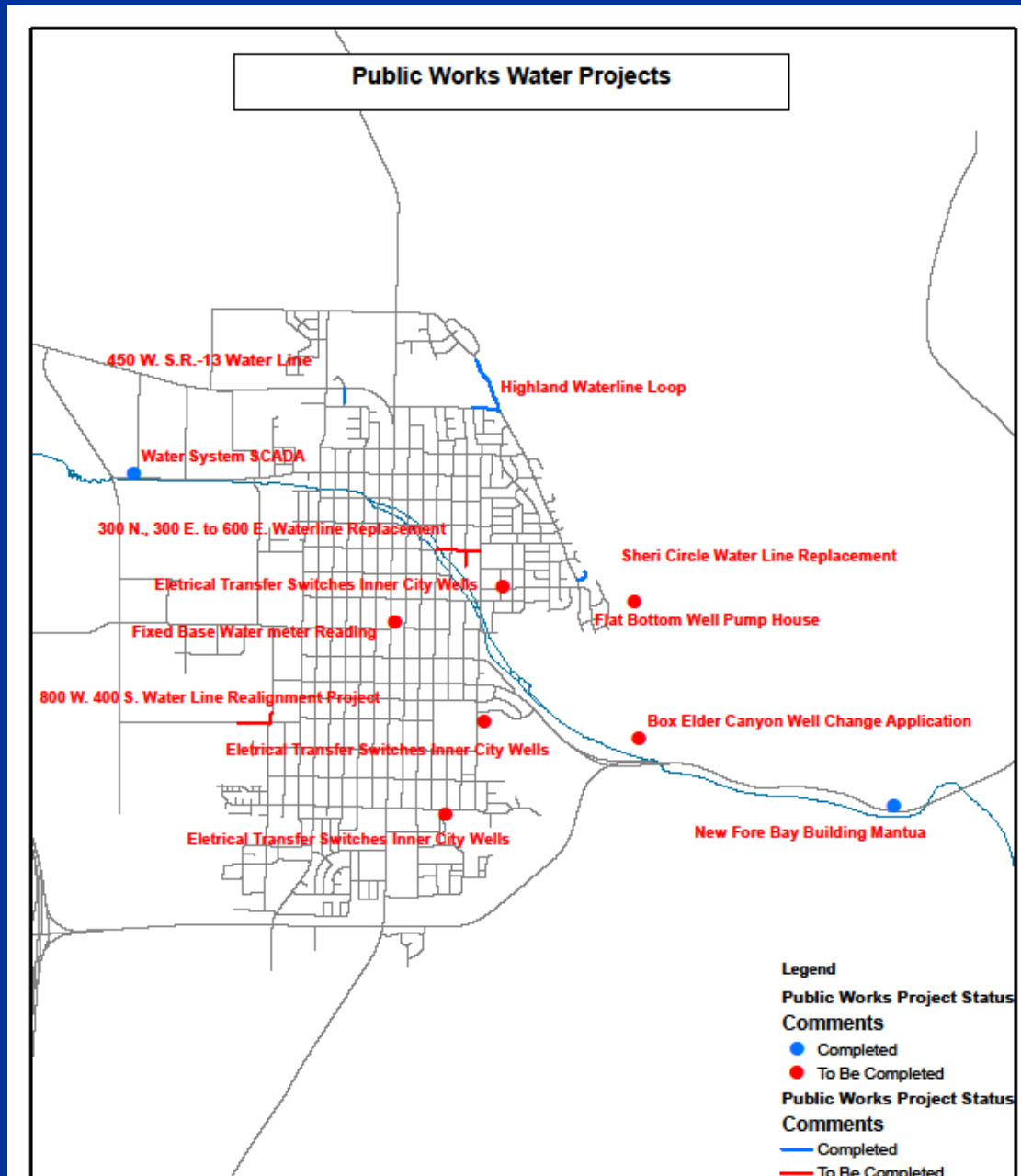


Medical Drive  
500 West  
Crack Seal  
Chip Seal

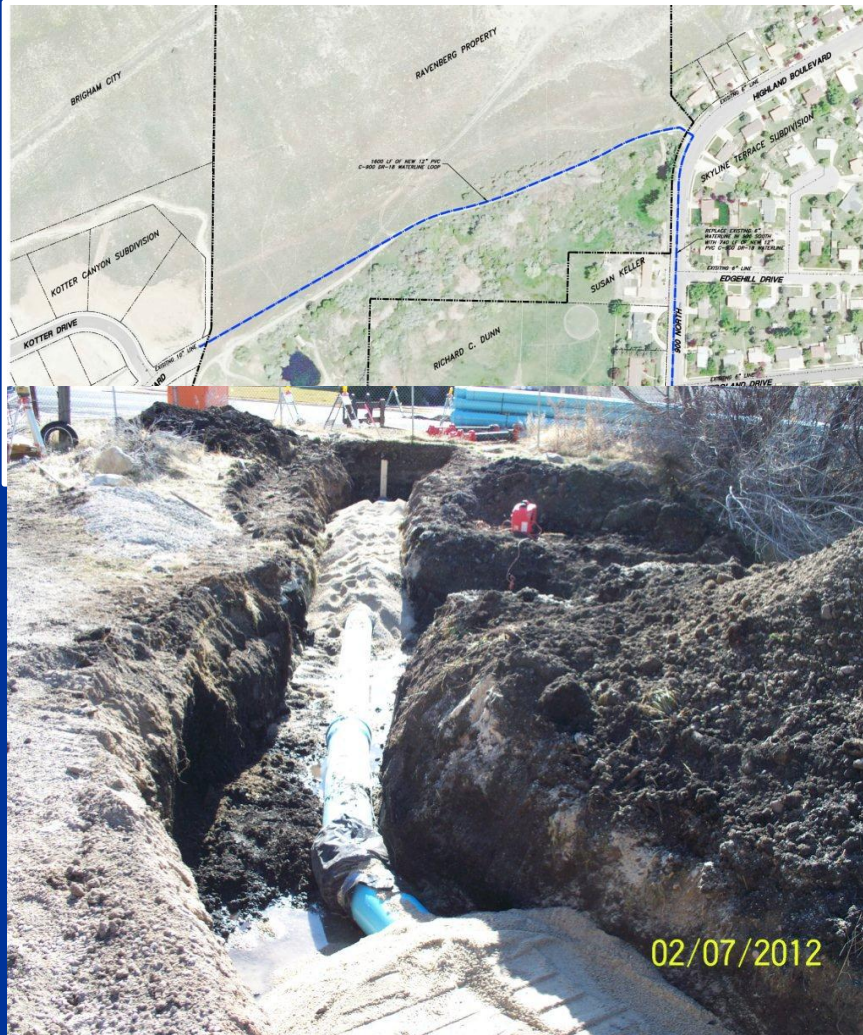


Cemetery Roads  
Slurry Seal

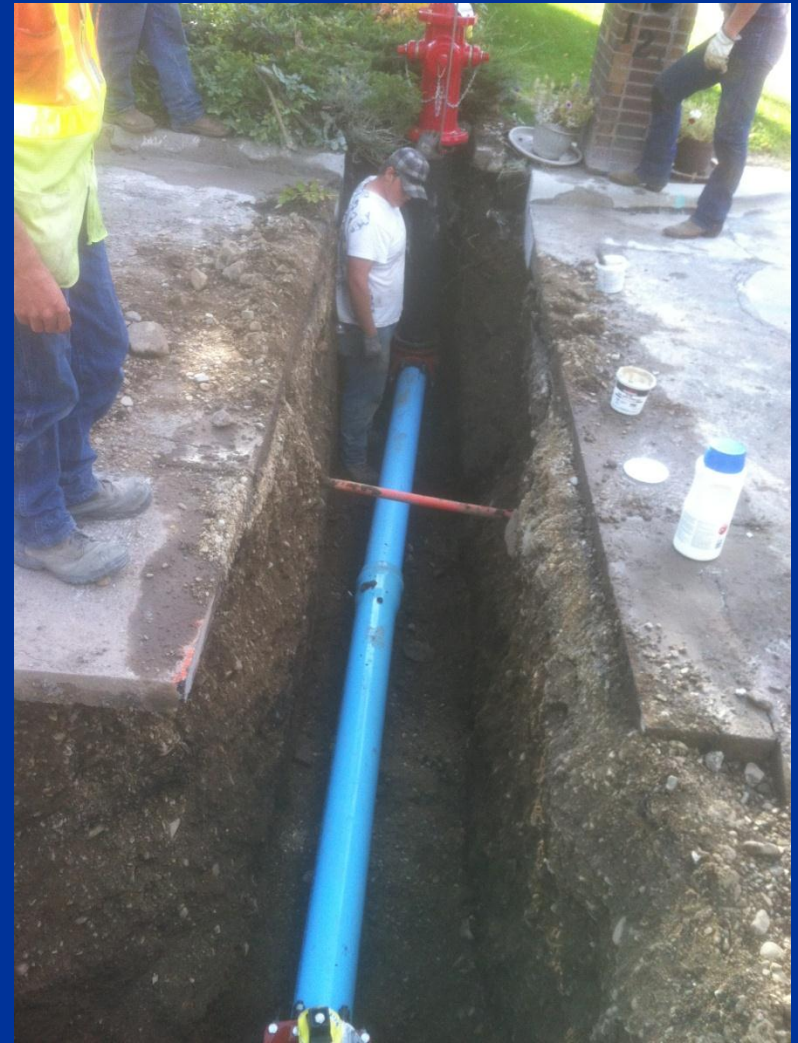
# Water Projects



# Water Projects

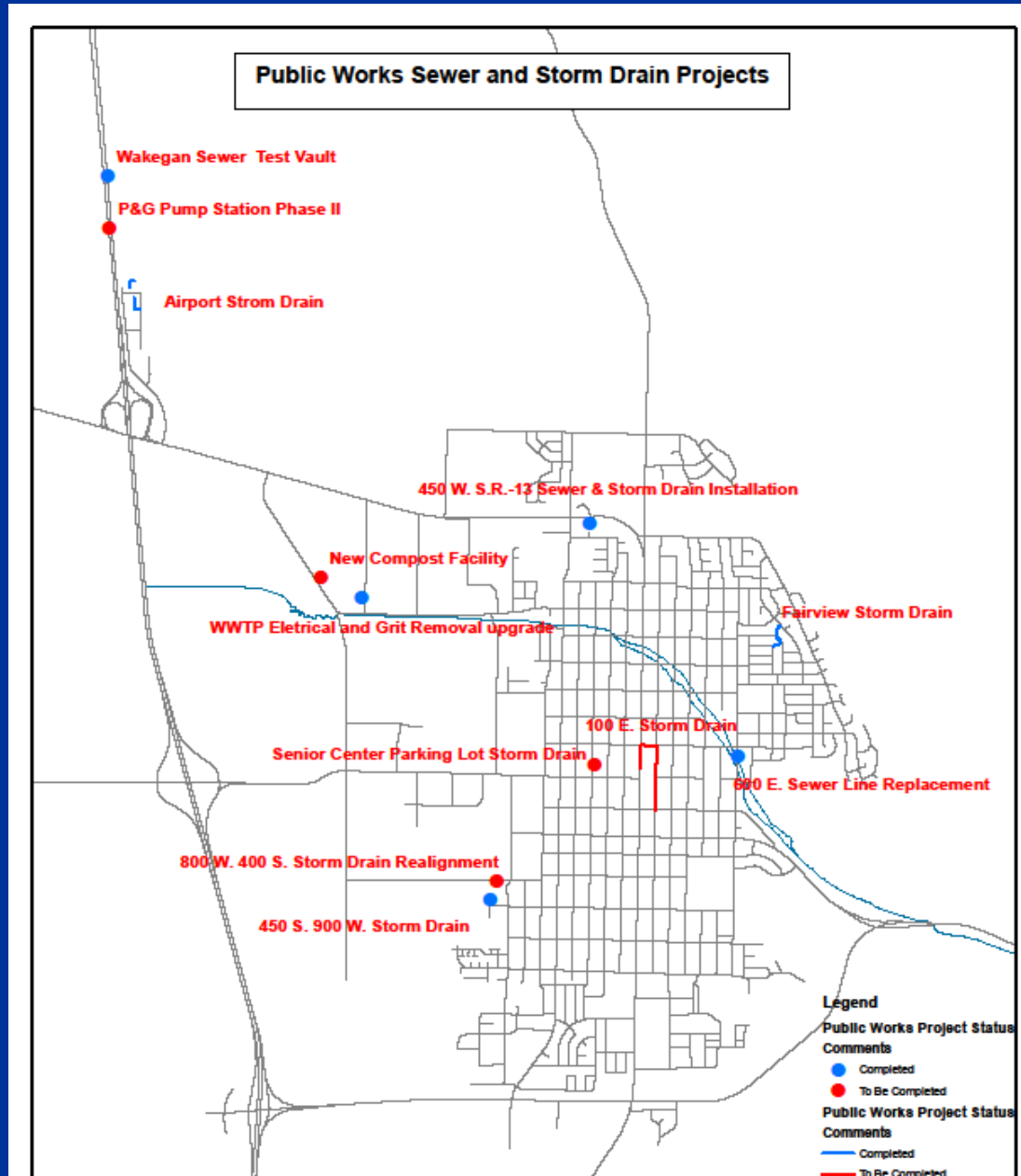


Highland Water Line  
and Connection  
to Kotter Canyon



Sheri Circle  
Water Line

# Sewer and Storm Drain Projects



# Sewer and Storm Drain Projects

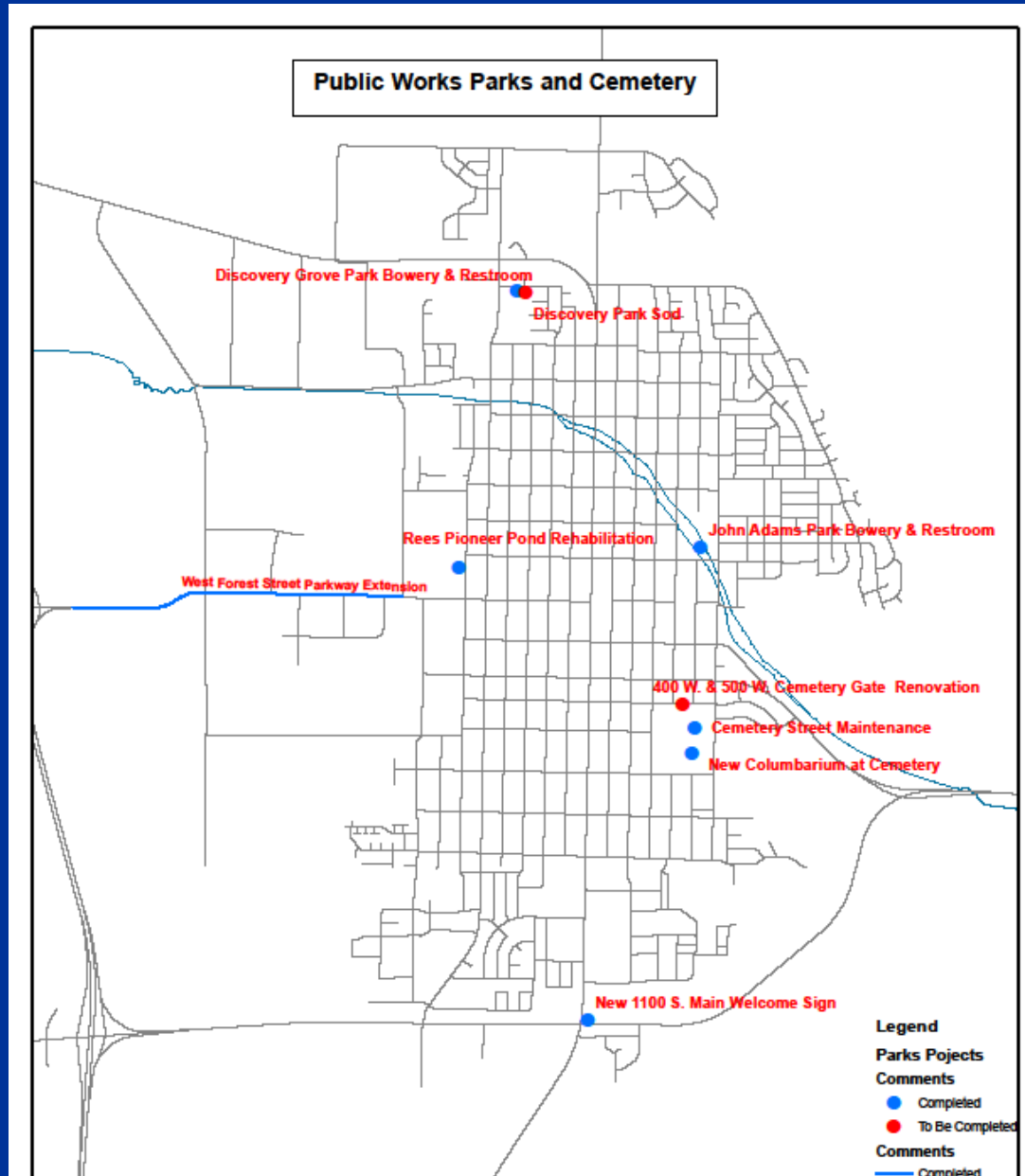


Wakegan  
Sewer Test Vault



Storm Drain tie in  
west side of 900 West

# Parks Projects



# Parks

John Adams Park  
Bowery and Restroom



Discovery Grove Park  
Bowery and Restroom



# Welcome to Brigham City



# Sports Complex

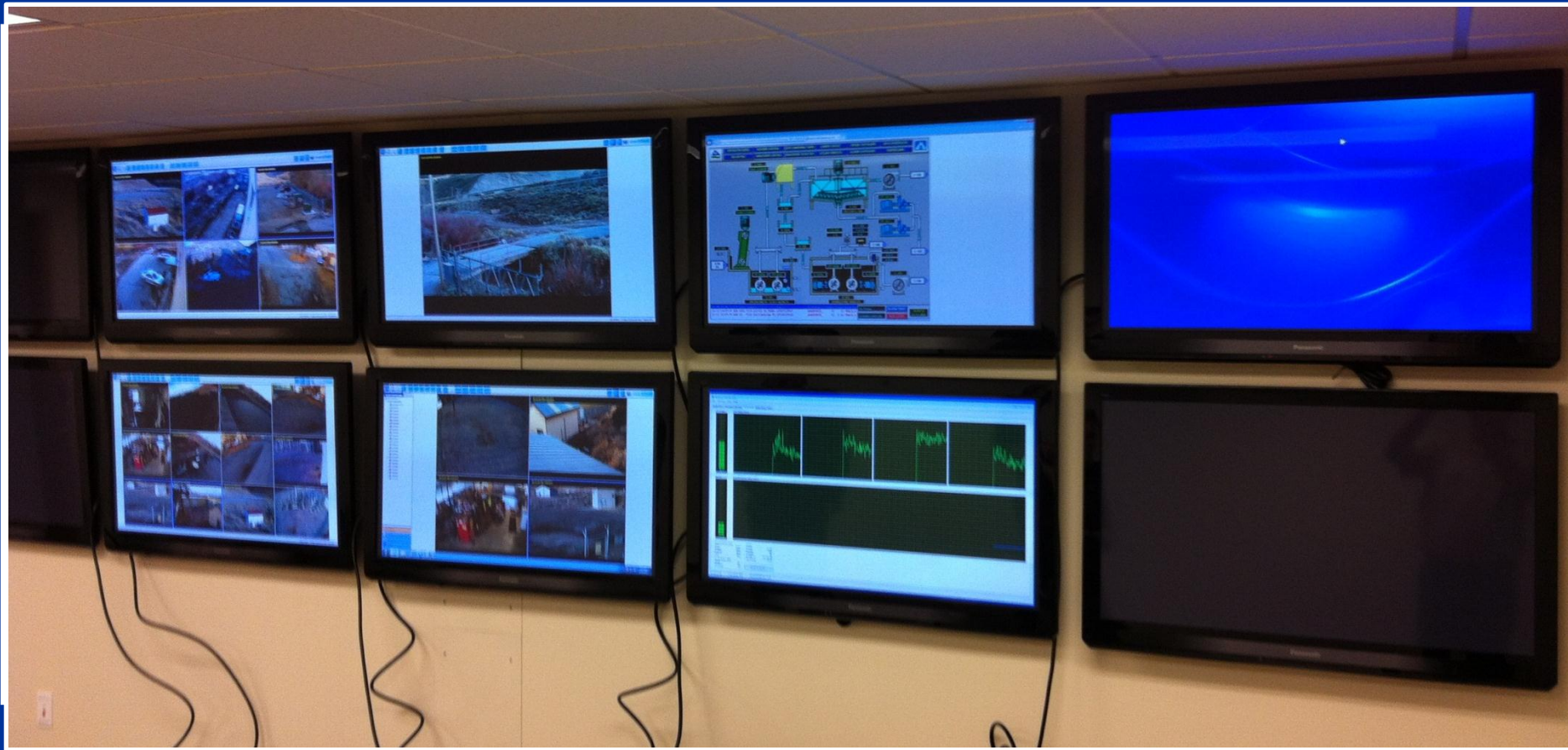


# Mantua Trails Map



# Power Department

Brigham City Service Center



SCADA Center  
(Supervisory Control and Data Acquisition)

# Brigham City is a member of



*Utah Associated Municipal Power Systems*

The Horse Butte Wind Project is located on more than 17,600 acres in Bonneville County, Idaho, near Idaho Falls. The project has 32 wind turbine generators providing 58 megawatts of power to be delivered to communities in Utah, Nevada, Wyoming and California. Brigham City purchases 5 megawatts.



# Electrical Energy Rate

## Sources of Brigham City Power

Rocky Mountain Power (72%)

Western Area Power (20%)

Brigham City Hydro (4%)

UAMPS Wind Power (4%)

Brigham City has not raised  
electrical rates since July 2009  
even though wholesale rates to  
Brigham City increased over 20%

# DOE GRANT (1.75 Million)

Feasibility Study Completed

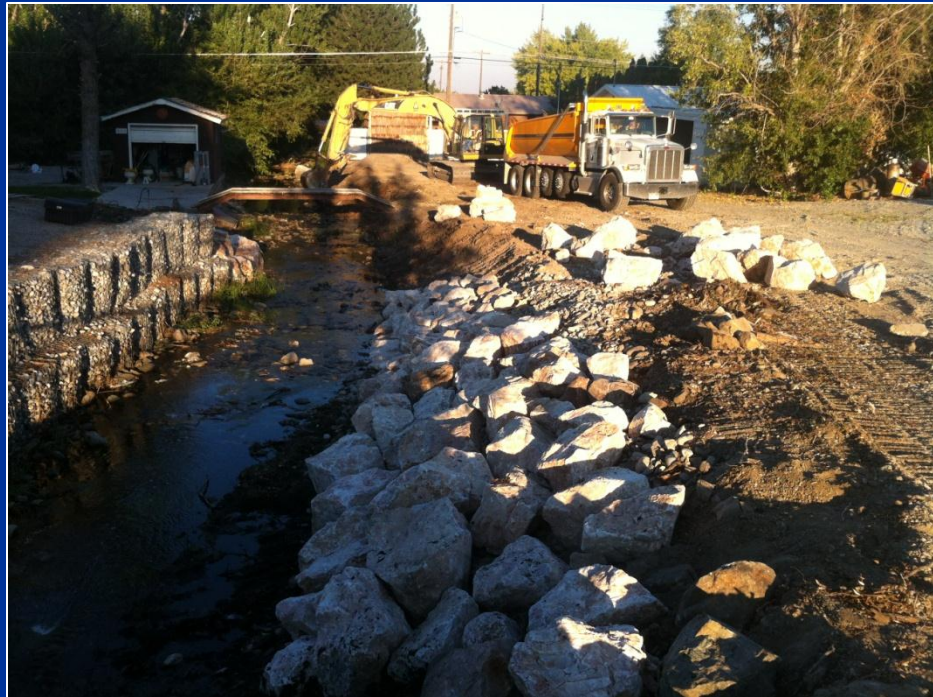
Replace Generator on Culinary Water Line



# Mantua Drainage Control



# Box Elder Creek Mitigation



# Diversion Structure



# BRIGHAM CITY MUNICIPAL AIRPORT

95% FAA Grant, 2.5% State Grant, 2.5% Local Match



# Progress in Many Other Areas

Senior Center Seismic Upgrade and Remodel

Library

Museum

Recreation Programs

Emergency Services (Police, Ambulance, Fire)

Economic Development

HyperComp/Vexel, USU, Downtown Hotel, etc.

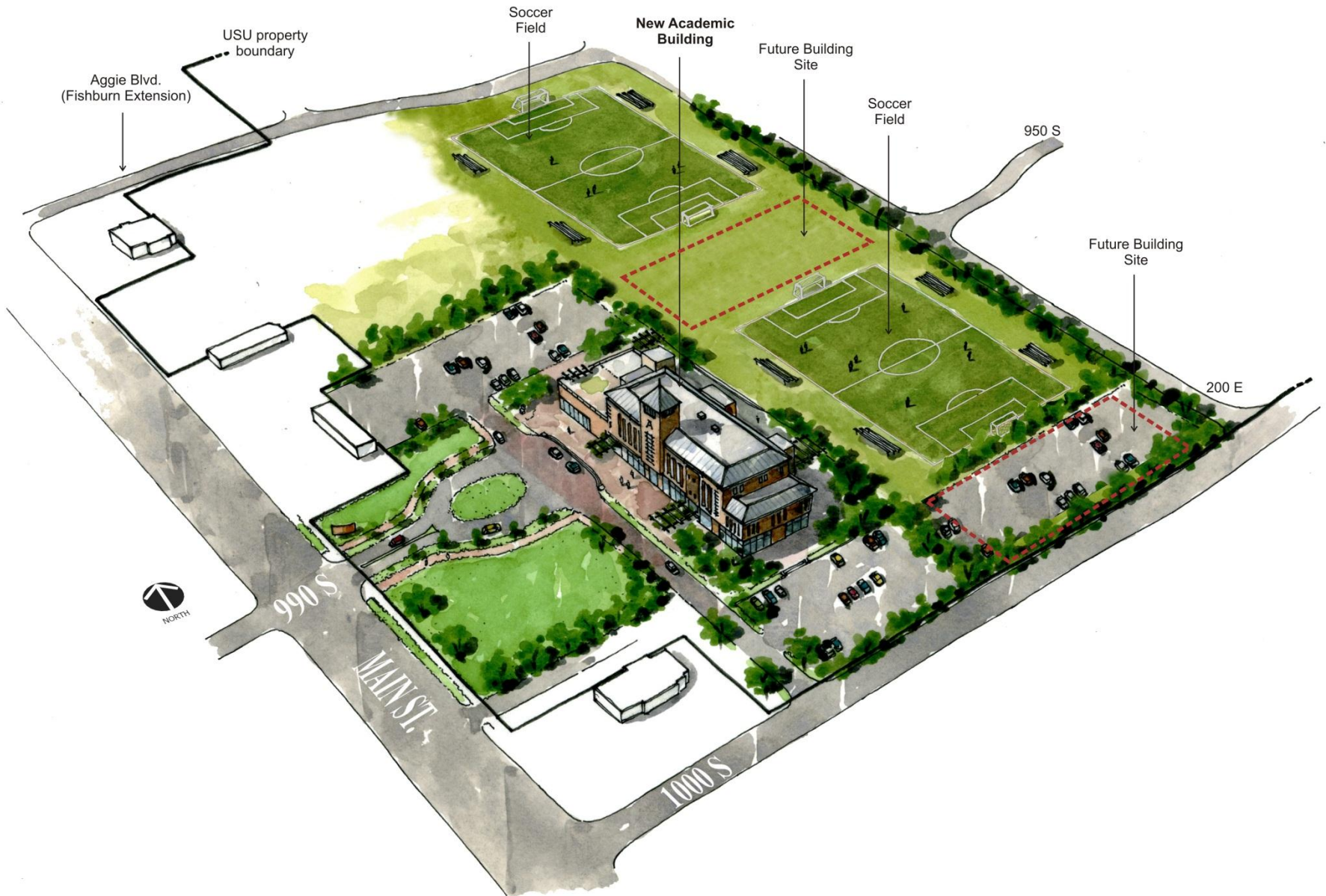
New Construction: (LDS Temple, Woodland Senior Center, Brigham Place Apartments, Kotter Canyon Subdivision, etc.)

# USU Regional Campus



The plan includes demolition of the Kmart building which will be the site where the first USU Regional Campus building will be erected.

# USU Regional Campus



# Downtown Hampton Inn



THANK YOU