



>>----->PREVIEW ONLY <-----<<

THE STAPLE DRESS

<<-----<->----->>

sewing pattern and instructions by April Rhodes

ABOUT THIS DRESS PATTERN

THE STAPLE DRESS - designed to be simple yet flattering. This dress has a lot of ease through the bust and hip, with elastic shirring at the waist to cinch it in. The waistline can be customized and adjusted up and down to accent the wearer's natural waist. Choose between two hemlines, a classic straight hem or a more dramatic drop hem style, with optional side-seam pockets. Cute alone or belted, with flats, boots or heels, it's a year-round wardrobe essential.

TERMS OF USE

This pattern is for personal use only. I am considering creating and selling a seller's license for my patterns, but, until that time, please DO NOT SELL anything made from this pattern unless you have permission. Thank you for your understanding. Also, DO NOT COPY this pattern or instructions. They are copyright by law. Instead please support me and my endeavors by sending others to buy their own copy at <http://aprilrhodes.blogspot.com/>. Thank you!

SIZING

BODY MEASUREMENTS (in inches)

	xs	s	m	l	xl	xxl
bust	33	35	37	39	42	46
waist	26	28	30	32	35	39
hip	26	28	40	42	45	49

FINISHED GARMENT MEASUREMENTS (in inches)

	xs	s	m	l	xl	xxl
bust	36	38	40	42	45	49
length*	38	38 1/4	38 1/2	38 3/4	39	39 1/4

*Length measurements given are for the straight hem style. With the drop hem, the dress will measure 1 5/8" shorter at center front and 4" longer at center back, for all sizes.

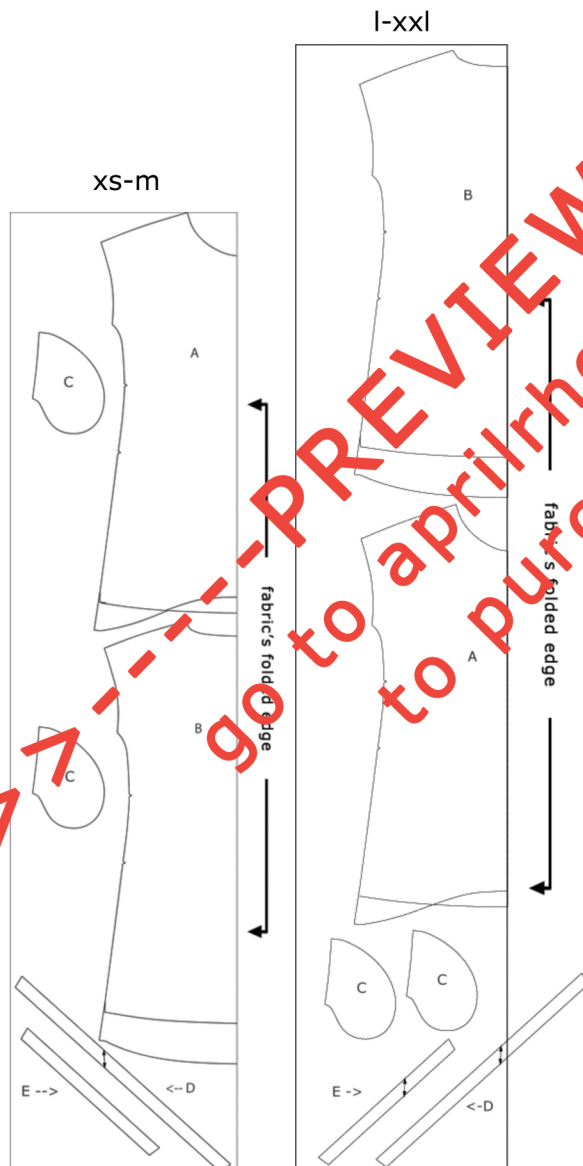
PRINTING AND ASSEMBLING PDF PATTERN

Use size is 8.5" x 11" paper. The pattern portion of this PDF is on pages 17-43. All sizes and seam allowances are included. To save your printer ink you can choose to print only these pages. To do so, select File > Print, select "Pages" and enter "17-43" in the box. Also, under "Page Scaling" be sure to select "None" so that the pattern pieces print true to size. Once pattern pages are printed, check the key on page 19 to be certain it measures 4" wide x 2 1/4" tall. Tape pattern pieces together following the chart on page 17, aligning all numbers, letters and markings.

PATTERN PIECES

- A Dress Front
- B Dress Back
- C Pocket
- D Armhole Facings
- E Neck Facing

CUTTING LAYOUTS



GET READY!

READ THROUGH ALL INSTRUCTIONS BEFORE YOU BEGIN.

- Prewash, dry and press fabric according to manufacturer's instructions before cutting.
- Most seam allowances used are 5/8" except when otherwise stated.
- The asterisk symbols (*) throughout this pattern indicate the option of using one or more alternative method(s) for the step.
- You may consider tracing your pattern onto pattern paper before cutting in order to preserve all size and item options on a master copy.

LET'S GO!

1. CUTTING

After your fabric is pre-washed and dried, press out all wrinkles. Use a spray bottle of water or light starch.

Spread fabric out on a large flat surface such as a dining table or hardwood floor. If using a tabletop be certain your fabric does not hang off the edge; otherwise it may pull and distort your pieces as you cut. Instead, roll it up or fold any fabric that can't fit. Then, pin and cut just one or two pattern pieces at a time.

Take the selvages and fold fabric as shown in the cutting layout diagrams. Each pattern piece has an arrow or grainline showing how it must be cut along the grain. A fabric's grain runs parallel to its selvage, so these arrows should also lay parallel with the selvage.

Pin Dress Front (A) and Dress Back (B) on the folded edge, and cut around the sides (don't cut the folded edge). Place Pocket (C) and Armhole Facing (D) on top two layers of fabric and cut out. Then, unfold remaining fabric and cut one Neck Facing (E). Transfer markings from all pieces with a watersoluble marker or tailor's chalk, and clip out small notches.

Pin and sew with a $\frac{3}{8}$ " seam allowance, backstitching at the beginning and end (5c). Press the Facing and seam allowance upward, away from the body of the dress (5d). Fold the top, raw edge of the Neck Facing down to meet the stitch line (5e). Press. Fold once more so that the original seam is now at the edge of the neck opening and all raw edges are encased (5f).



Press and pin Neck Facing well (5g). Topstitch around the neck opening, $\frac{1}{4}$ " from the edge. Take care in doing this. You may find that you need to smooth things out as you go - avoid bunching. Gently stretch the Facing to conform to the shape of the neck opening (5h). Press and steam neck opening

