



(Katja's Quilt Shoppe)

# budding beauty

## materials

- 3–9×22" pieces (fat eighths) assorted red prints (flowers, prairie points, inner border)
- Scraps of assorted gold prints (flower centers, prairie points)
- 3–9×22" pieces (fat eighths) assorted rust prints (flowers, prairie points)
- 3–18×22" pieces (fat quarters) assorted green prints (leaf and stem appliqué, prairie points, binding)
- 9×22" piece (fat eighth) each of blue and dark blue prints (flowers, prairie points)
- 18×22" piece (fat quarter) tan print (vase appliqué, prairie points)
- $\frac{7}{8}$  yard black wool (appliqué foundation, outer border)
- $\frac{7}{8}$  yard backing fabric
- 30×34" batting
- 16– $\frac{7}{8}$ "-diameter buttons in blue, rust, red, and green
- No. 8 perle cotton: black
- Freezer paper
- Sturdy paper or precut English-paper-piecing templates

**Finished quilt:** 23 $\frac{1}{2}$ ×27 $\frac{1}{2}$ "

**Quantities** are for 44/45"-wide, 100% cotton fabrics unless otherwise indicated.

**Measurements** include  $\frac{1}{4}$ " seam allowances. Sew with right sides together unless otherwise stated.

## about the technique

English paper piecing is a sure way to guarantee accuracy and is most effective for shapes that have numerous set-in corners, such as hexagons and diamonds. Precut paper templates, available at quilt shops and fabric stores, save time.

## cut fabrics

Cut pieces in the following order. Patterns are on *Pattern Sheet 1*.

To cut pieces A through C and prepare them for English paper piecing, see *Make Paper Templates and Prepare Templates*, both on *page 114*.

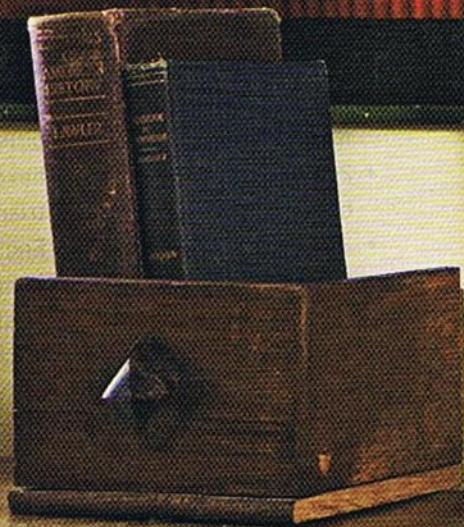
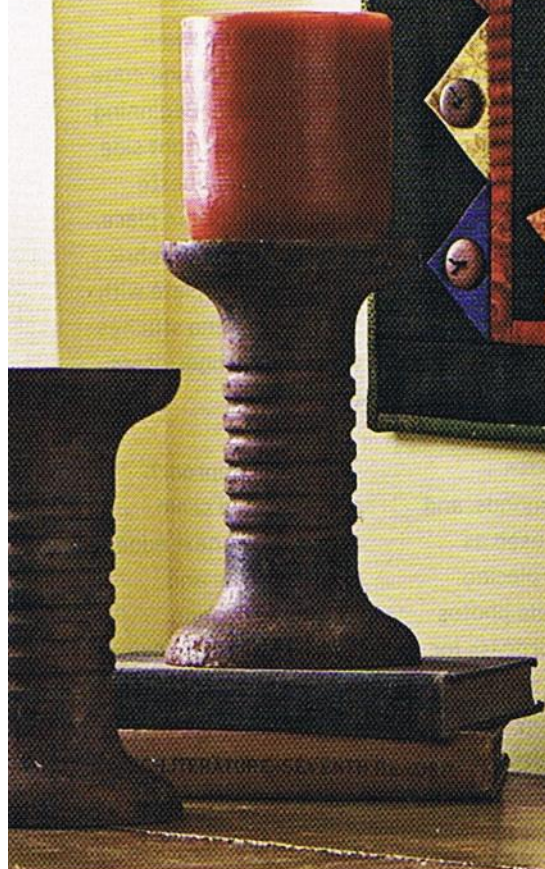
To use freezer paper for cutting appliqué shapes D through J, complete the following steps.

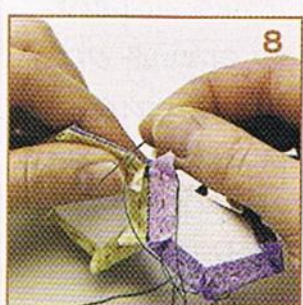
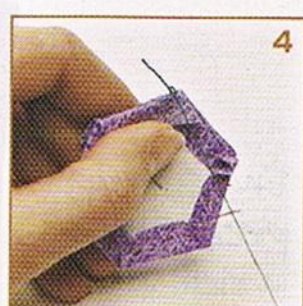
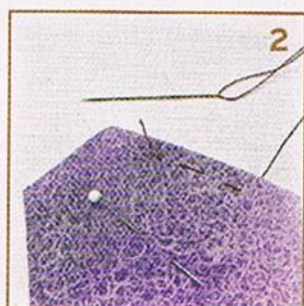
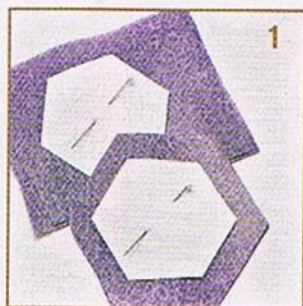
1. Use a pencil to trace each pattern once, leaving  $\frac{1}{2}$ " between tracings. Cut out freezer-paper shapes on traced lines.



English-paper-pieced flowers in rich, warm tones appear to spring off the surface of a wall hanging embellished with prairie points and buttons.

DESIGNER KATJA SAYEWICH  
PHOTOGRAPHS CAMERON SADEGHPOUR





**2.** Using a hot, dry iron, press freezer-paper shapes, shiny sides down, onto wrong side of fabrics indicated in cutting instructions; let cool. Cut out fabric shapes roughly  $\frac{1}{4}$ " beyond freezer-paper templates.

**3.** Fold fabric over freezer paper edges and baste in place  $\frac{1}{8}$ " from edge.

**From assorted red prints, cut:**

- 3- $3\frac{1}{2}$ " squares
- Enough 1"-wide strips in assorted lengths to total 90" in length for inner border
- 18 of Pattern A (3 sets of 6 matching pieces)

**From assorted gold prints, cut:**

- 2- $3\frac{1}{2}$ " squares
- 3 of Pattern A
- 2 of Pattern C

**From assorted rust prints, cut:**

- 3- $3\frac{1}{2}$ " squares

- 16 of Pattern B (4 sets of 4 matching pieces)

**From assorted green prints, cut:**

- 6- $2\frac{1}{2}$ ×21" binding strips
- Enough 1"-wide bias strips to total 80" in length for stems (For details, see Cut Bias Strips, *Pattern Sheet 2.*)
- 3- $3\frac{1}{2}$ " squares
- 1 each of patterns E, F, G, H, I, and J
- 4 of Pattern B

**From each of blue and dark blue prints, cut:**

- 2- $3\frac{1}{2}$ " squares
- 6 of Pattern C

**From tan print, cut:**

- 1 of Pattern D
- 1- $3\frac{1}{2}$ " square

**From black wool, cut:**

- 1-17×24" appliqué foundation
- 2- $3\frac{1}{2}$ ×24 $\frac{1}{2}$ " outer border strips
- 2-2×23 $\frac{1}{2}$ " outer border strips

**make paper templates**

Patterns A through C are on *Pattern Sheet 1.*

To make templates for English paper piecing, use a pencil to trace patterns on sturdy paper the number of times indicated below. Cut out each shape carefully and accurately.

**From sturdy paper, cut:**

- 21 of Pattern A
- 20 of Pattern B (If desired, on four of the B pieces, slightly round off the point on a long side to accommodate a stem.)
- 14 of Pattern C

**prepare templates**

In this project, three different shapes—hexagons, diamonds, and triangles—are used as English-paper-piecing templates. While photos illustrate the process for hexagons, the same techniques apply to the diamonds and triangles.

**1.** Pin a paper A template to wrong side of fabric indicated in cutting instructions. Cut around template, adding  $\frac{3}{8}$ " seam allowance (Photo 1). (Seam allowances do not need to be exact; the paper template will be an accurate guide.)

**2.** Fold fabric seam allowance over one edge of A template. Beginning with a knot on right side of fabric, hand-baste seam allowance in place, stitching through fabric and paper template with  $\frac{1}{4}$ "-long basting stitches (Photo 2). Finger-press basted edge.

**3.** As you approach a corner, fold seam allowance of next edge over template and continue stitching (Photo 3). Stitch all edges in same manner. Do not knot thread when you finish; leave about a  $\frac{1}{2}$ "

thread tail on fabric's right side.  
Do not remove paper template.

**4.** Repeat steps 1 through 3 to prepare remaining A hexagons and the B diamonds and C triangles.

### prepare flower appliques

**1.** Referring to Appliqué Placement Diagram on page 116, lay out six matching red print hexagons and one gold print hexagon in a flower shape.

**2.** Aligning edges to be joined, pin two hexagons right sides together.

**3.** With a single strand of quilting thread, begin stitching about  $\frac{1}{8}$ " from one corner using tiny whipstitches and catching a thread of both fabric folds (Photo 4). You'll feel the paper templates with your needle, but do not stitch through them.

**4.** Backstitch to nearest corner (Photo 5).

**5.** Once you reach the corner, reverse direction of stitching and sew along edges to opposite corner (Photo 6). Take a backstitch, and knot thread.

**6.** Lightly press open joined pieces and check seam from right side (Photo 7). Stitches should not show. If they do, take smaller whipstitches through less of the fabric folds.

**7.** To set in the center hexagon, pin and sew it to one edge of the joined hexagons. Reposition stitched pieces to align next pair of seams and continue sewing, bending hexagons as needed (Photo 8). Add remaining red

# HARVEST HOME

by Blackbird Designs for Moda



## Quilting Hoops

by HINTERBERG DESIGN



22" Hoop  
w/ Floor Stand



14" Hoop  
w/ lap stand

Caddy  
Model 1200

Making your favorite hoops  
for over 25 years.

4 hoop sizes available  
Hoops tilt & rotate 360° for comfortable quilting  
5 year warranty, made in USA

www.hinterberg.com 1-800-443-5800



print hexagons in the same manner.

**8.** When all pieces in flower have been joined, press to set edges. Pull out basting threads and remove templates from the back to make a hexagon flower appliqué (photos 9 and 10).

**9.** Repeat steps 1 through 8 to make three hexagon flower appliqués total.

**10.** Referring to Appliqué Placement Diagram, lay out four matching rust print diamonds and one green print diamond in a flower shape. Repeat steps 2 through 8 to make a diamond flower appliqué. Repeat to make four diamond flower appliqués total.

**11.** Referring to Appliqué Placement Diagram, lay out three blue print triangles, three dark blue print triangles, and one gold print triangle in a flower shape. Repeat steps 2 through 8 to make a triangle flower appliqué. Repeat to make a second triangle flower appliqué.



### prepare stem appliqués

To speed up the process of creating bias stems, designer Katja Sayewich cut her stem strips  $\frac{1}{2}$ "-wide and used a  $\frac{1}{4}$ " bias tape maker.

**1.** Cut and piece assorted green print 1"-wide bias strips to make:

- 1-13"-long strip
- 1-11"-long strip
- 1-10"-long strip
- 2-8"-long strips
- 3-7"-long strips
- 1-6"-long strip

**2.** Fold each assorted green print strip in half lengthwise with wrong side inside; press. Stitch a scant  $\frac{1}{4}$ " from edges (Diagram 1). Trim seam allowances to  $\frac{1}{8}$ ". Refold each strip, centering seam in back; press to make stem appliqué.

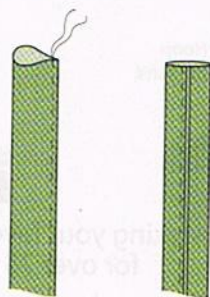
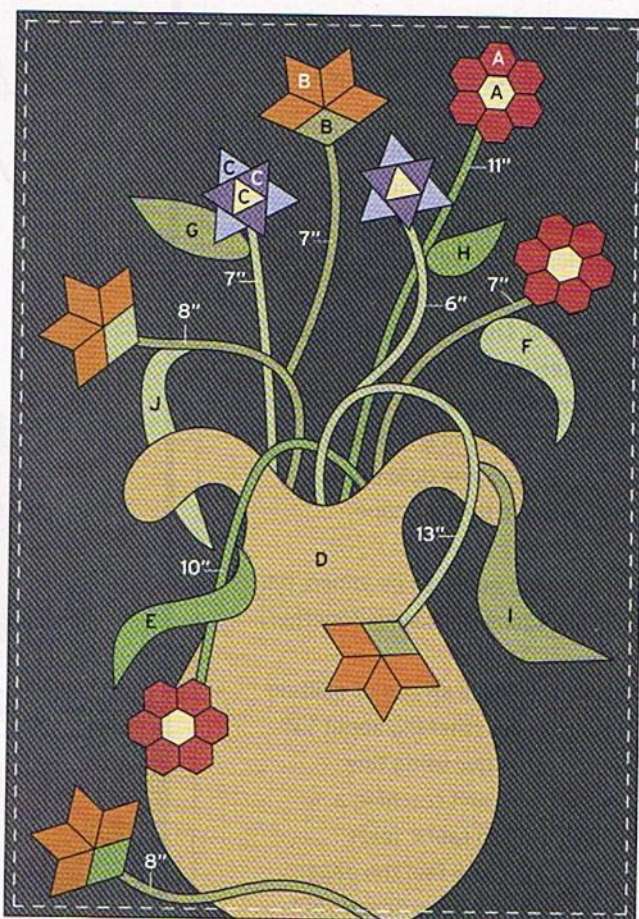


Diagram 1



Appliqué Placement Diagram

### appliqué quilt center

**1.** Referring to Appliqué Placement Diagram, arrange all appliqués on black wool 17×24" foundation.

**2.** Working from bottom layer to top and using matching thread, hand-appliqué shapes in place with a small slip stitch.

**3.** To remove freezer paper templates from appliqué shapes, first remove basting thread. Make a small slit in the foundation behind appliqué shapes and

gently remove freezer-paper templates.

**4.** Trim completed appliqué foundation to  $16\frac{1}{2}$ × $23\frac{1}{2}$ " including seam allowances to complete quilt center.

### assemble and add inner border

**1.** Join assorted red print 1"-wide strips into one continuous strip. Cut pieced strip to make:

- 2-1×24 $\frac{1}{2}$ " inner border strips
- 2-1×16 $\frac{1}{2}$ " inner border strips

**2.** Sew short inner border strips to short edges of quilt center. Sew long inner border strips to remaining edges. Press all seams toward inner border.

### make prairie points

**1.** Fold each assorted tan, green, blue, rust, red, or gold print 3½" square in half diagonally with wrong side inside to form a triangle; press. Fold each triangle in half and press to make a prairie point (Diagram 2).



Diagram 2

**2.** Referring to Quilt Assembly Diagram, which is on *Pattern Sheet 1*, pin eight prairie points to each long edge of quilt center with raw edges aligned and prairie points pointing toward quilt center. Space prairie points evenly and face double-fold edges in the same direction; baste.

### add outer border

Sew black wool 3½×24½" outer border strips to long edges of quilt center, sewing through all layers. Add black wool 2×23½" outer border strips to remaining edges to complete quilt top. Press all seams toward inner border and prairie points toward outer border.

### finish quilt

**1.** Layer quilt top, batting, and backing; baste. (For details, see Complete Quilt, *Pattern Sheet 2*.)

**2.** Quilt as desired. Katja machine-quilted in the ditch around all appliqué and inner border.

**3.** Bind with green print binding strips. (For details, see Complete Quilt.)

**4.** Using black perle cotton, attach a button to each prairie point, stitching through all layers. Refer to photo on page 113 for placement. 🍷



### to order a kit

of fabrics for quilt top and binding, buttons, and precut English-paper-piecing templates, send \$107.99 U.S. ppd. (In Canada, send \$107.99 Can. ppd.) to Katja's Quilt Shoppe, 101-1967 Trans Canada Hwy. E, Kamloops, BC, Canada V2C 4A4; 250/851-0324 or toll-free (U.S. and Canada) 866/852-8527.

**HOFFMAN**  
CALIFORNIA  
INTERNATIONAL  
**FABRICS**  
ESTABLISHED 1924

**KASURI**  
To view the Kasuri Collection,  
and download the free pattern Kasuri Royale,  
by Toby Lischko, go to [www.hoffmanfabrics.com](http://www.hoffmanfabrics.com)