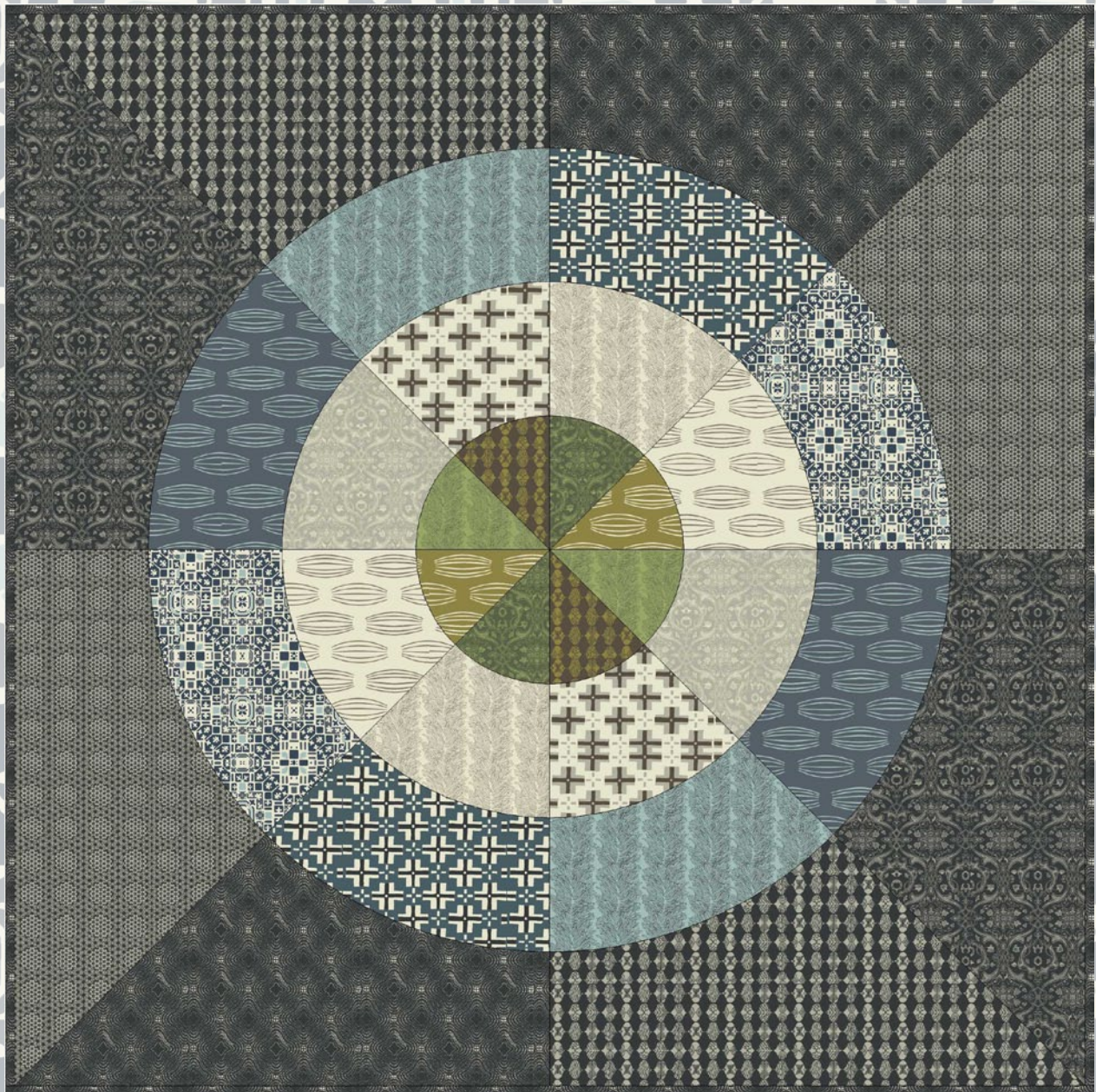


# Curious Nature

62" x 62"

designed by David Butler



featuring fabric from Curious Nature collection  
by David Butler

*Free Spirit* 



# ❧ Curious Nature ❧

Quilt designed by Parson Gray

Finished Quilt Approximately: 62" square (157.5cm sq.) - Finished Block Size: 31" square (78.75cm)

**Curious Nature** fabrics designed by Parson Gray for Free Spirit Fabrics

<b>Fabric &amp; Order#</b>	<b>Cutting Instructions For 1 Quilt</b>	<b>Yards to Buy For 1 Quilt</b>	<b>Yards to Buy For 25 Kits</b>
A (#PG002-Royalty)		1 (.92m)	25 (23m)
B (#PG003-Tail Coat)		1 (.92m)	25 (23m)
C (#PG007-Night)	(7) 2-1/2" x WOF (6.35cm x WOF)	1-1/2 (1.4m)	37-1/2 (34.3m)
D (#PG005-Stones)		1 (.92m)	25 (23m)
E (#PG009-Tin)		5/8 (.58m)	15-5/8 (14.5m)
F (#PG001-Dark Water)		5/8 (.58m)	15-5/8 (14.5m)
G (#PG006-Steel)		5/8 (.58m)	15-5/8 (14.5m)
H (#PG004-Arctic)		5/8 (.58m)	15-5/8 (14.5m)
I (#PG002-Silver)		3/8 (.35m)	9-1/2 (8.8m)
J (#PG006-Oyster)		3/8 (.35m)	9-1/2 (8.8m)
K (#PG001-Bone)		3/8 (.35m)	9-1/2 (8.8m)
L (#PG009-Bone)		3/8 (.35m)	9-1/2 (8.8m)
M (#PG001-Pines)		Fat Quarter*	6-1/2 (6m)
N (#PG003-Forest)		Fat Quarter*	6-1/2 (6m)
O (#PG002-Pines)		Fat Quarter*	6-1/2 (6m)
P (#PG009-Brush)		Fat Quarter*	6-1/2 (6m)
Backing Fabric	(2) 70" x WOF (178cm x WOF)	4 (3.66m)	100 (91.5m)
Misc. Materials:	70" x 70" quilt batting (178cm x 178cm)		

\*Fat Quarters are 18" x 22" (46cm x 54cm)

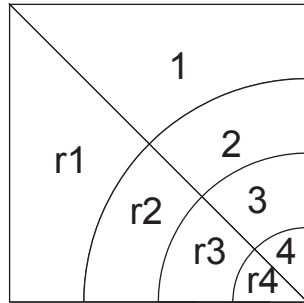


# Curious Nature

Sewing Directions - Page 1

## Project Basics:

1. Templates are reduced - be sure to enlarge as described on page of templates.
2. Templates are to be laid on fabric with the arrow along the straight or cross grain of fabric (refer to quilt graphic for direction of *each* piece).
3. Templates are numbered. Placement of the templates within a block are shown in this graphic.

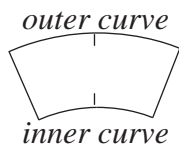


## Cutting and Piecing

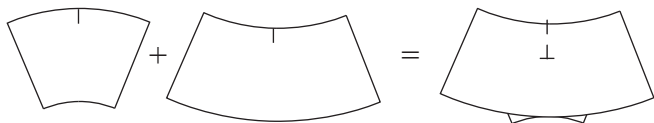
1. Cut the fabrics with templates as listed:
  - From Fabrics A and C - cut (2) r1
  - From Fabrics B and D - cut (2) 1
  - From Fabrics E and G - cut (2) r2
  - From Fabrics F and H - cut (2) 2
  - From Fabrics I and K - cut (2) r3
  - From Fabrics J and L - cut (2) 3
  - From Fabrics M and O - cut (2) r4
  - From Fabrics N and P - cut (2) 4

2. Piecing curves requires a little care. Be sure not to stretch the bias cut edges except when easing seams together. Here's the basics...

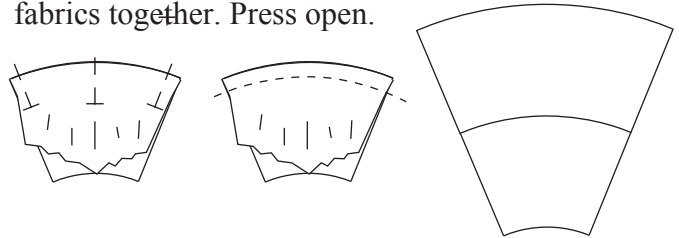
When pinning and sewing curves, work from the side of the inner curve so it is easier to ease in seams.



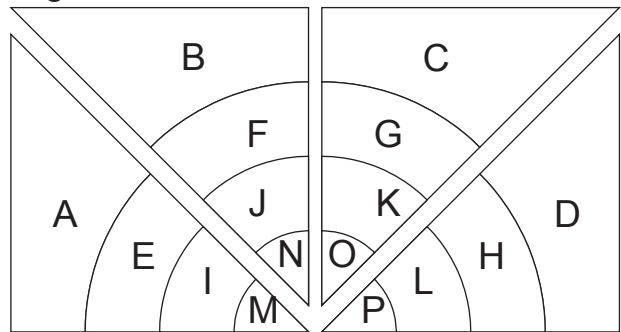
Mark the center point of each curve with a pin or mark. Place two curves to be sewn together, right sides together matching their center points and pin.



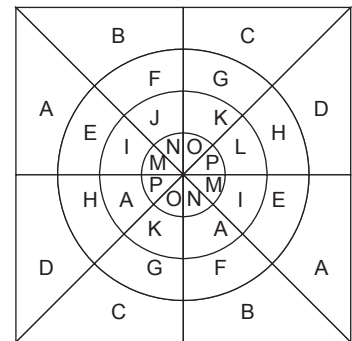
3. Fold the inner curve corners down and pin to the outer curve corners. Stitch curved seam, easing the fabrics together. Press open.



4. Referring to the placement chart below, sew the pieces into two of each triangle, then join the triangles into the blocks.



5. Piece blocks into quilt top as shown:



## Finishing:

1. Piece backing along selvage edges.

2. Layer backing, batting and quilt top.

Quilt or tie as desired. Trim batting and backing even with quilt top.

3. Make binding from (7) Fabric C 2-1/2" x WOF (6.35cm x WOF) strips. Apply to raw edges of quilt.

# Curious Nature

Sewing Directions - Page 2

Templates are 25% of full-size.  
Enlarge templates x400% on copy machine.  
Template sizes are given to nearest  
1/8" (or 0.1cm) of the full-size template.

This box is 2" square.  
Measure the box. If it is  
not 2" square, reduce or  
enlarge the entire page  
of templates until it is -  
before enlarging  
templates by 400%.

