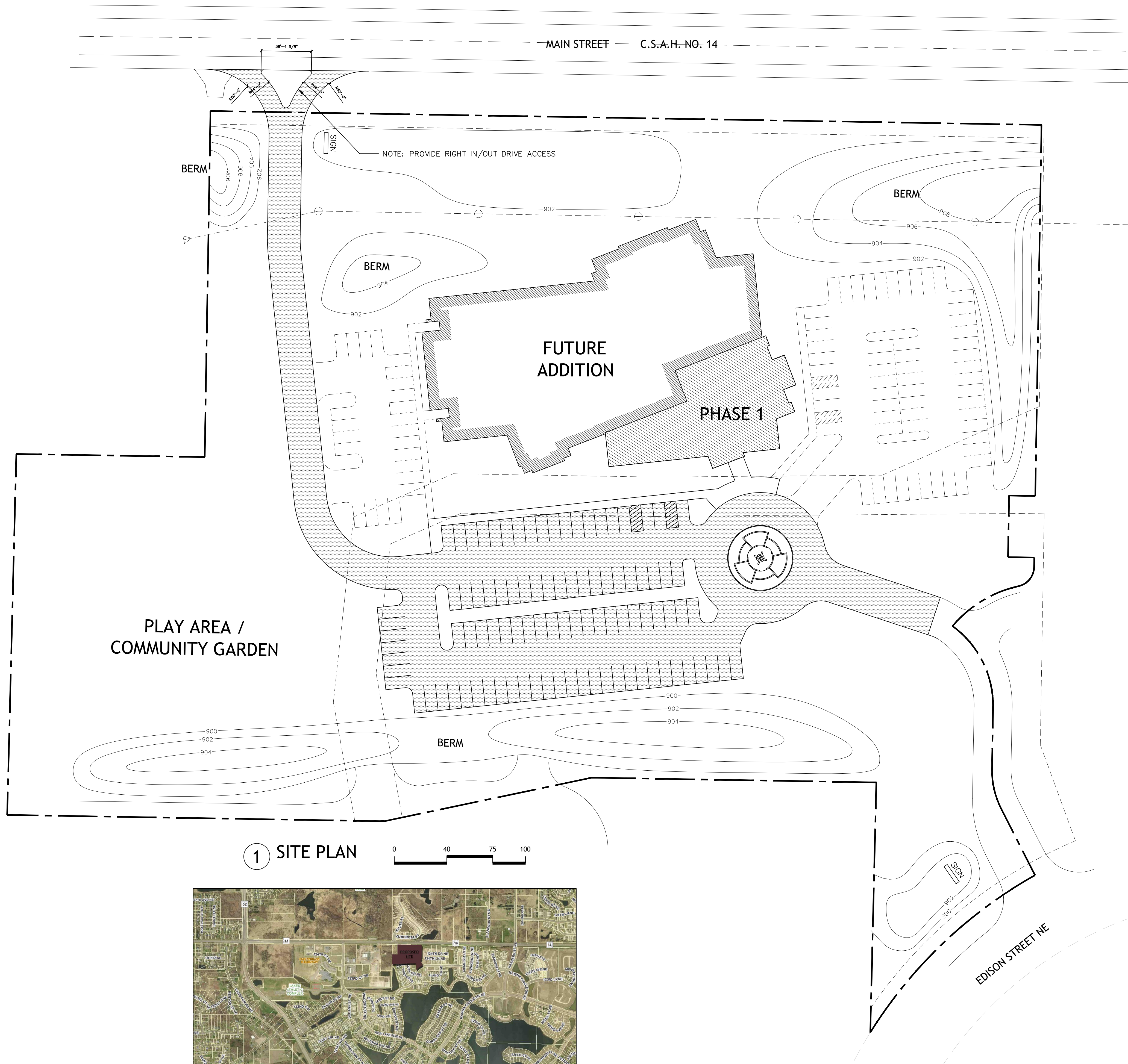


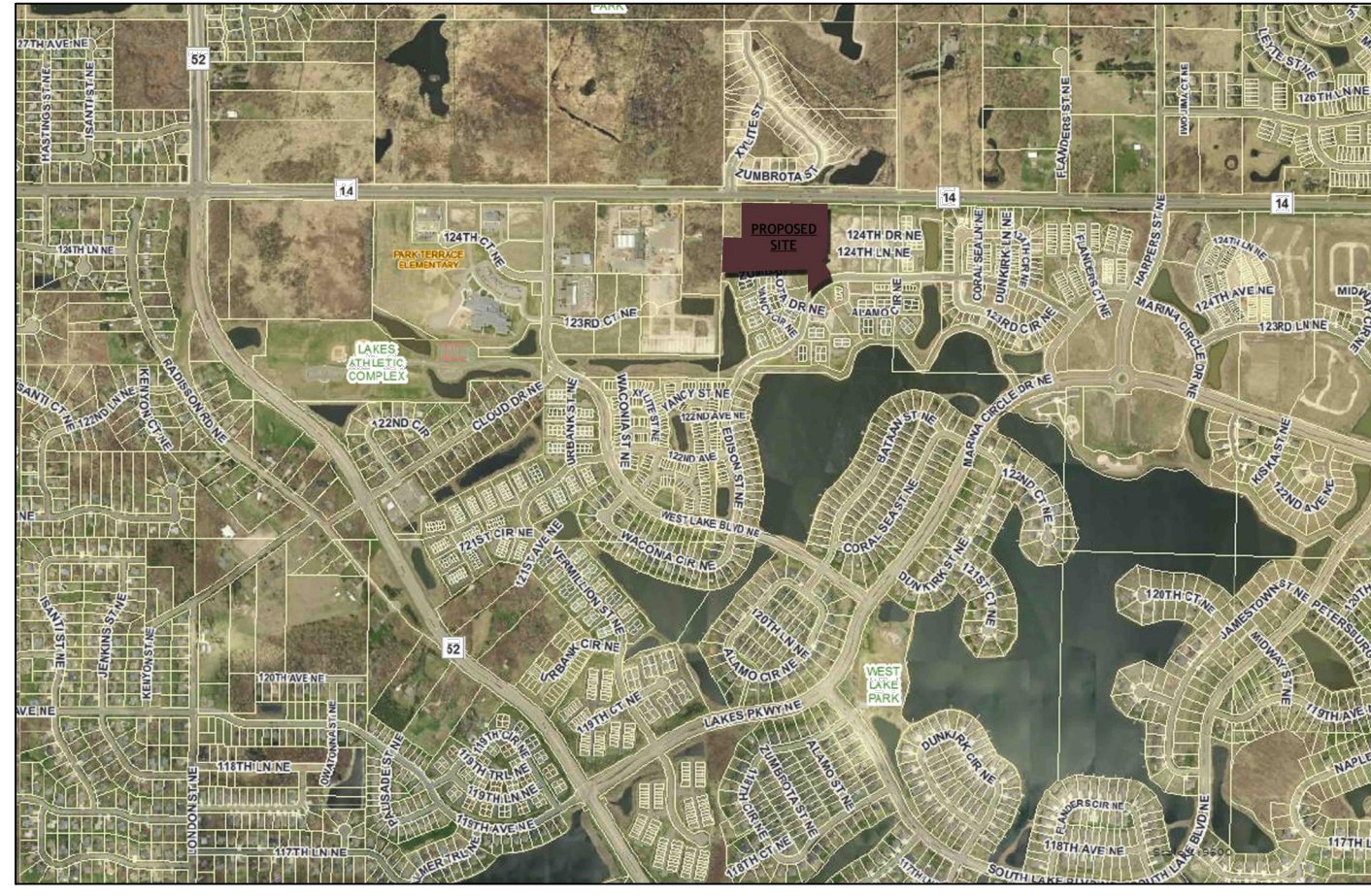


Sessing Architects, Inc.
 1172 Red Fox Road
 St. Paul, MN 55112
 Telephone: (651) 490-1470
 Fax: (651) 490-1627



- i) Proposed 1st unit
 - (1) Building: 8,272 s.f., 2.2%
 - (2) Parking and drives: 62,344 s.f., 16.7%
 - (a) 97 stalls
 - (3) Green Space: 303,192 s.f., 81.1%
- ii) Proposed Master Plan
 - (1) Building: 37,350 s.f., 10.0%
 - (a) Additional 900 s.f. in balcony
 - (2) Parking and drives: 92,006 s.f., 24.6%
 - (a) 178 stalls
 - (3) Green Space: 244,452 s.f., 65.4%
- iii) Housing Calculations per preliminary plat
 - (1) Building: 77,708 s.f., 20.8%
 - (2) Parking and drives: 135,306 s.f., 36.2%
 - (3) Green Space: 160,794 s.f., 43.0%

1 SITE PLAN



2 VICINITY MAP

CHAIN OF LAKES
 BLAINE, MN

NO.	REVISION	DATE

THIS DRAWING AND THE INFORMATION THEREIN IS THE PROPERTY OF SESSING ARCHITECTS, INC. ITS USE BY THE HOLDER OR DISCLOSURE TO OTHERS WITHOUT THE WRITTEN CONSENT OF SESSING ARCHITECTS, INC. IS PROHIBITED. IT CONTAINS PROPRIETARY AND CONFIDENTIAL INFORMATION OF SESSING ARCHITECTS, INC.
 © COPYRIGHT 2010

1
 SHEET 1 OF 1
 3/19/12

DRAWN BY: JPJ | CHECKED BY: WAS