

Friday, September 28 Pre-Show Class Day

9am-4pm

"Falling for Fall Wall Hanging"

Instructor: Susan O'Very

Sit and sew class –
Turner Community Center
\$49 includes kit



9am-4pm

"Rob Pete – Table Runner"

Instructor: Mattie Rhoades

Sit and sew class –
Turner Community Center – \$59 includes kit



9am-4pm

"Monogram Mondo Bag"

Instructor: Sue Hausmann

Sit and sew class –
Turner Community Center
\$59 includes kit

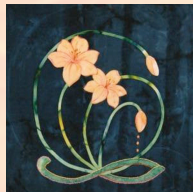


10am-4pm

"Oriental Lily Hand Applique"

Instructor: Marcy Scott

Hand Sewing class –
Turner Community Center
\$49 includes kit



7:30 pm | Quiltsmart Trunk Show of Quilts – Mattie Rhoades – Lenna Hall – Free admission

Join Mattie, President and founder of Quiltsmart Inc. for a magnificent trunk display. Her goal is to make quilting fun, leaving behind the tedious work of the past, yet keeping the classic look of the quilts we all love. Though she is far from a perfectionist, and can be quite content with mismatched seams, a side benefit of making quilting easier using printed interfacing is that it ends up being pretty darned accurate, too! So, quilting these traditionally-difficult quilts (like Lone Stars, Mariner Compasses, Dahlias) becomes pretty easy -- easy enough for beginners to shine at the quilt guild show-and-tell!

Quilt smarter, not harder! Modern methods with fusible interfacing

- Quiltsmart is Easy, Fast, Smart!...And, FUN!
- Traditionally-difficult quilts are now easy, quick and accurate!
- Make quilts like the Lone Star and Double Wedding Ring in a snap!
- We put the design and engineering into the patterns, so all you have is the fun!



Full class
descriptions online at
quiltingaroundchautauqua.com

Saturday, September 29

10am-11:30 am

"Beyond the Binding:

Everyday Quilters,
Extraordinary Quilts"

Lecture by Marianne Fons
and Mary Fons

Lenna Hall – \$20 admission

In this colorful lecture, avid quilters Marianne Fons and her daughter, Mary Fons present unusual quilt made by mostly unknown quilters of the past, examining just what makes each work exceptional. Along the way, these two members of "the quilt mafia" bust quilting myths and invite anonymous quilters to lunch.



1:30pm-3:00 pm

Fast, Faster, Fastest Quilting

with Sue Hausmann

Lecture and Trunk Show

Lenna Hall – \$15 admission

Sue shares vintage quilts to inspire you and teaches you to create quilts and quilted projects stitching some of the same quilting styles with new quilting tools and techniques. Her "trunk show" of quilted projects, quilts, and crafts will show something for everyone. Step-by-step demos for fast, faster, fastest applique, redwork, crazy patch, embroidery, free motion and tie quilting plus "sew" much more! Learn a fast, a faster, and the fastest way to bind and finish your quilt. Sue teaches her special tips and techniques to make your quilting easier and shows ways to help you get it all done!



GENERAL INSTRUCTIONS

Pre-Register for all lectures and classes at
www.quiltingaroundchautauqua.com

(Admission at the door available only if seats remain.)

- All lectures are held in Lenna Hall, with its perfect acoustics and comfortable theater seating.
- All sit-and-sew classes are held in the Turner Community Center. Machines will be provided.
- Shuttles will be available for transportation around the grounds to the different venues.
- \$5 admission to the show, includes both days.
- Show Coordinator: Judy Fenton 814-866-8227

Sunday, September 30

10am-11:30 am

"Why We Quilt"

Lecture by Marianne Fons

Lenna Hall – \$10 admission

In this informative and entertaining lecture, Marianne examines the motivations of American Quilters from 1776 to the current Day. You will learn why she quilts and maybe why you do, too.



1:30pm-2:30pm

"A Thirty Something Quilter tells all"

Lecture by Mary Fons

Lenna Hall – \$10 admission

What's the state of Quilting Today? What is a modern quilt? What do you do when your 24 year old niece laughs when you suggest you make a quilt together? (Hint: wait till she is 34.) In this humorous, often poignant address, Mary Fons shares her view of the quilt world as we know it – and offers ideas about the future.



1:30pm-3:00pm

Wine Shades

Hands-On, Sit and sew class

Turner Community Center – \$15 includes kit

Wine Shades – New from Quiltsmart!

A fun, low key, EASY, and quick project! Make the shade with Quiltsmart printed interfacing, pop it on a wine glass, add a tea-light and voila...an adorable little lamp! You can embellish the shade with a bit with decorative stitches or trims or just use your favorite fabrics. We'll have all the trimmings there! Pattern is for wine glasses that have a 2.5 - 3" diameter (standard white wine glass).

