

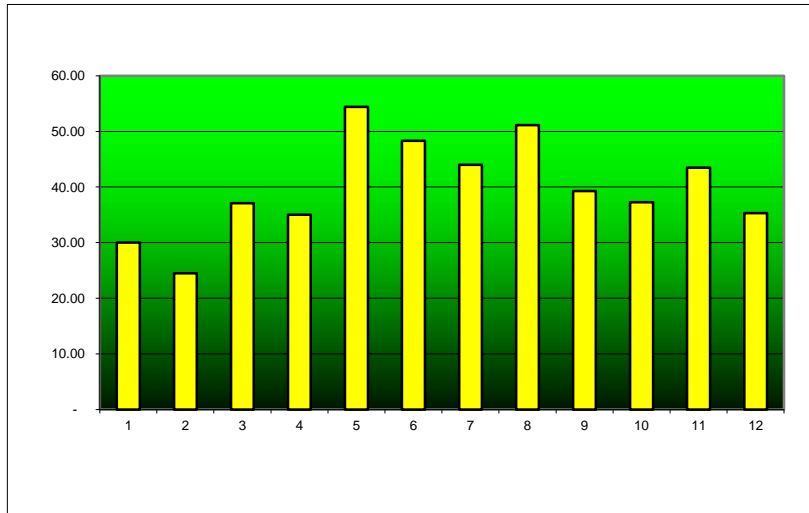


## YEAR TO DATE DIVERSION REPORT - 2011

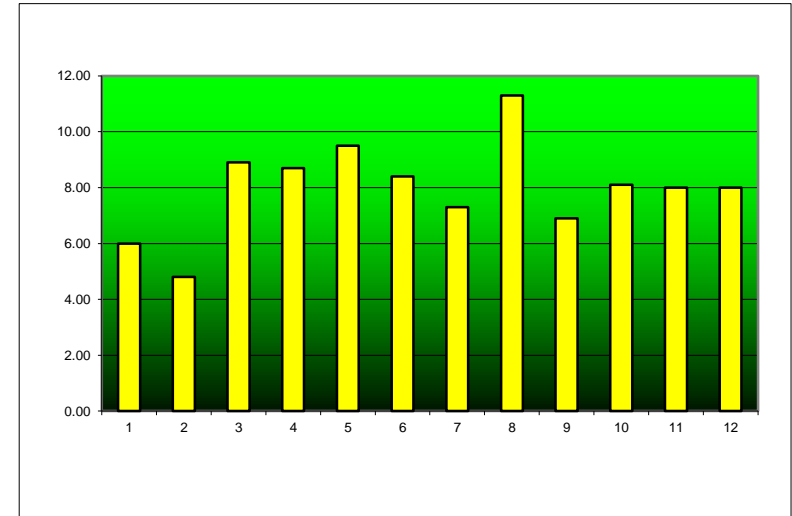
### Diversion Tons

Material	Jan	Feb	Mar	Apr	May	Jun	Jul	Aug	Sep	Oct	Nov	Dec
MSW	30.00	24.52	37.08	35.04	54.41	48.33	44.01	51.15	39.27	37.24	43.48	35.30
Recycle	6.00	4.80	8.90	8.70	9.50	8.40	7.30	11.30	6.90	8.10	8.00	8.00
<b>Total Combined</b>	<b>36.00</b>	<b>29.32</b>	<b>45.98</b>	<b>43.74</b>	<b>63.91</b>	<b>56.73</b>	<b>51.31</b>	<b>62.45</b>	<b>46.17</b>	<b>45.34</b>	<b>51.48</b>	<b>43.30</b>
<b>Diversion %</b>	<b>16.67%</b>	<b>16.37%</b>	<b>19.36%</b>	<b>19.89%</b>	<b>14.86%</b>	<b>14.81%</b>	<b>14.23%</b>	<b>18.09%</b>	<b>14.94%</b>	<b>17.87%</b>	<b>15.54%</b>	<b>18.48%</b>

MSW



Recycle



---

---

<b>Total</b>
479.83
95.90

**575.73**

16.66%

---

---

