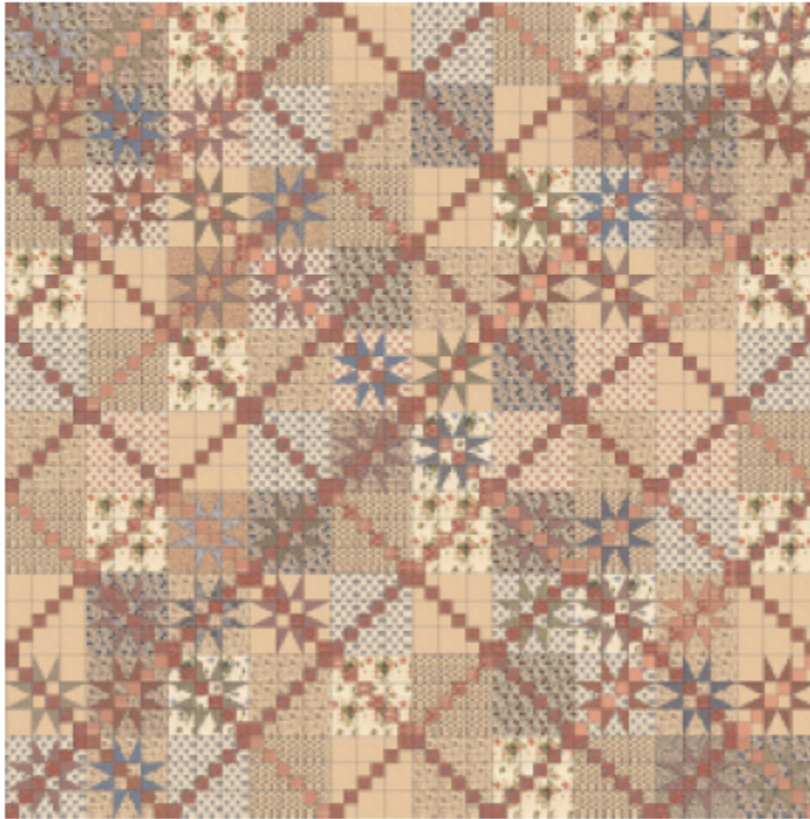


# *Pathways to the Stars*

by Sarah Maxwell and Dolores Smith

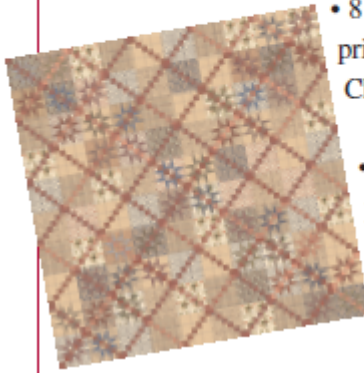
Machine quilting by Connie Gresham



Showcase a collection of prints in a rainbow of colors with this scrappy beauty.

Finished quilt measures 90" square.

Yardage Requirements:



- 8 yards total of assorted light to medium light prints for backgrounds of the Garden Patch and the Chain blocks.
- 3 yards total of assorted green, purple and blue prints for star points.
- 3-1/2 yards total of red and pink prints for chain.

The quilt is composed of 100 nine-inch finished blocks set 10 rows across and 10 rows down. There are 44 Garden Patch blocks and 56 Chain blocks.

Garden Patch Block:

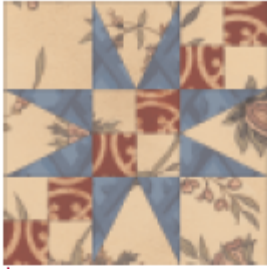
Refer to the following diagrams to construct one block. We highly recommend using the Tri-Recs™ ruler to construct the star points on the Garden Patch block. The ruler has detailed instructions on constructing accurate “pointy” points and was indispensable in making this quilt.

Use the Tri-Recs™ Tool to construct the 3” finished squares with the pointed triangle shape or use the templates provided. This part of the block uses a background fabric and a star point fabric. If you choose to use the templates, use a print fabric for template D & E. Use the Background fabric for Template B.



Each block uses 4 sets of the star point unit.

For the remainder of the block, cut two squares 3-1/2" x 3-1/2" from the background fabric.



Cut six 2" x 2" squares from the background print and six 2" x 2" squares from a red or pink print for the chain. Make three sets of four patch units from the background and red squares as shown.



Layout the background squares, four patches & star point units and assemble the block as shown. Repeat to make a total of 44 Garden Patch blocks.



Chain Block:

To make one Chain block, cut six squares from Background fabric measuring 3 -1/2" x 3-1/2".

Cut six squares from Background fabric measuring 2" x 2".



From a Red or Pink fabric, cut six squares measuring 2" x 2".

Assemble the Red fabric & Background fabric 2" squares into four patches as shown. Make 3 sets of four patches.

Layout the block pieces as shown in the diagram so the red squares form a diagonal line through the block and piece together to make a Chain block. Repeat for a total of 56 blocks.



Quilt Construction:

Once all blocks are sewn, refer to the quilt diagram to lay out the blocks, being careful to rotate the blocks so the path of the chain is created as shown.