



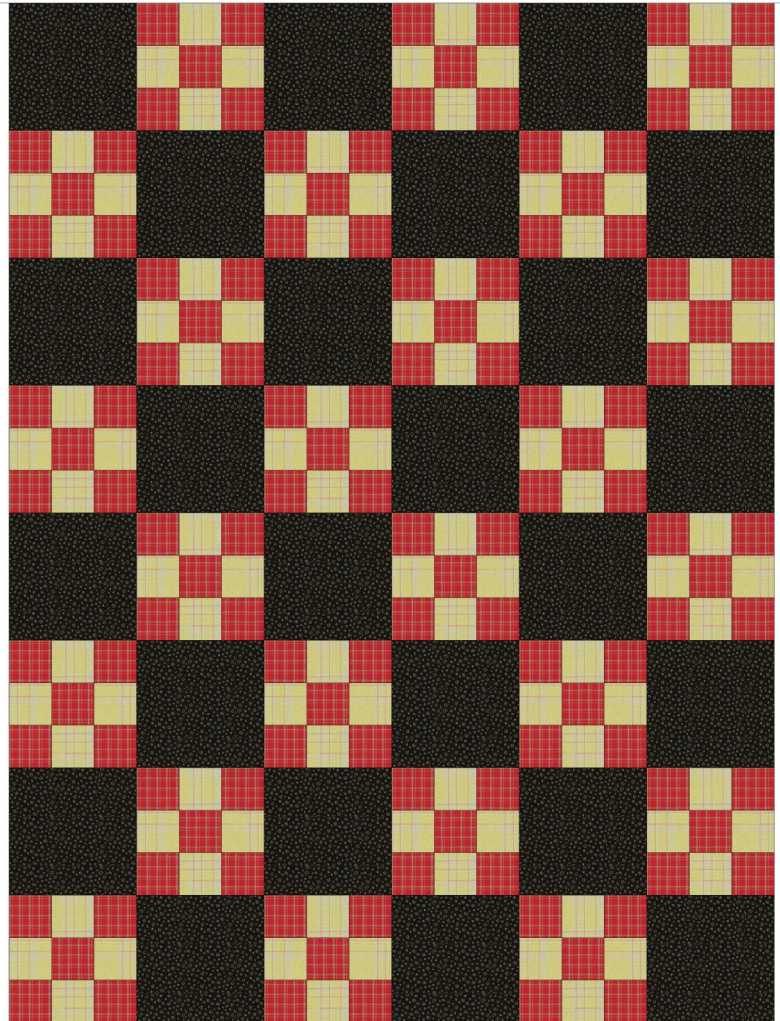
Kudzu Blossom

Quilt Shop

Nine-Patch

Quilt-A-Long

## Nine-Patch with Alternate block



This is an easy nine-patch layout.  
Simply alternate a fabric patch  
with your nine-patch block.

In this example, all of the nine-patches are the same,  
but they could easily be scrappy.

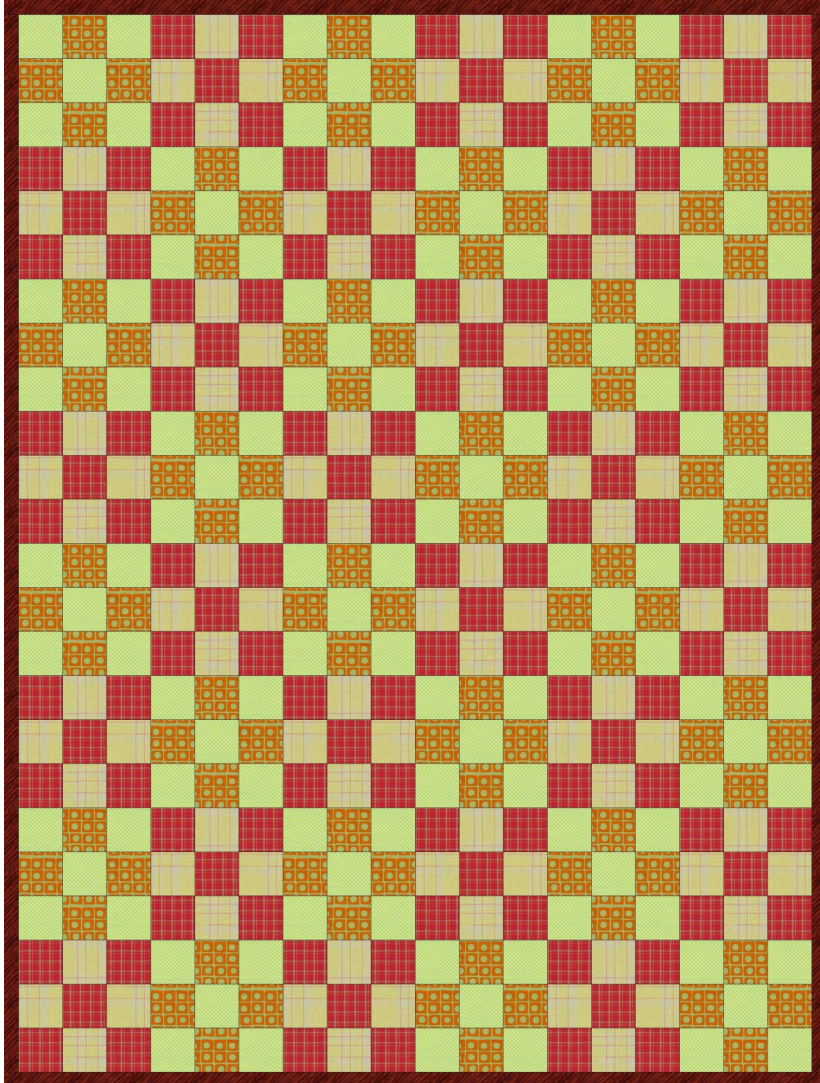
Use a print for the alternating patch and you have a  
totally different look.

Use different fabrics in the alternating patch to up  
the scrap factor.

Add borders.....

And do it all with few seams to match! Perfect for  
the beginning quilter.

## Nine-Patch Checkerboard

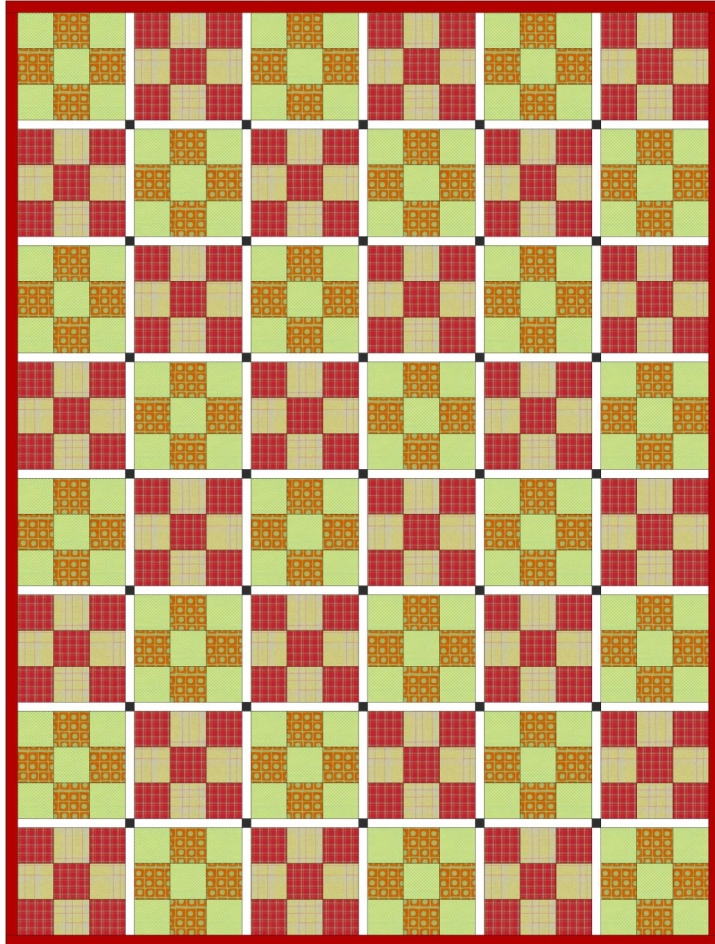


The Checkerboard is another easy nine-patch layout.

This example alternates two different nine-patches. You have a few seams to match—especially if the seams are pressed correctly. But don't worry if that isn't the case. Pin the intersections so that the seams nest and clip them to allow the seam to lay flat after you have stitched the blocks together.

Wouldn't this make a perfect picnic blanket or table topper? Imagine a square quilt in red and white.

## Sashed Nine-Patch



See how the Checkerboard changes with the addition of sashings and cornerstones?

The blocks are more distinctive in this example. The addition of the sashing reduces the number of seams you need to match. You could leave out the cornerstones and simplify the piecing a bit.

Now, how could you change it to fit your style?

- Scrappy?
- Borders?
- Alternating blocks?
- The sky is the limit

# Nine-Patch Alternating Blocks on Point



Placing the most simple layout on point changes the look of your quilt dramatically

The hardest part of making this quilt is figuring out how to make the setting triangles. And that isn't hard if you know the formula.

**Quarter-Square Setting Triangles** are the triangles on the sides of the quilt. The straight of the grain is on the long side of the triangle. This is important—you really don't want a bias edge on the outside of your quilt (trust me!).

It's easy to make the setting triangles, just cut a square diagonally into four triangles. To determine the size of the square: Take the Finished block size and multiply it by 1.414. Add 1.25 to that number and round to the nearest 1/2 inch.

Example: 12" block x 1.414 = 16.96 + 1.25 = 18.21  
round to 18.5. Cut your square 18.5 inches.

**Corner Triangles** are half-square triangles—the bias is on the long side of the triangle. To determine the size of the square you will cut, take the short side of the finished block plus 7/8. If your finished block is 6", cut your block 6 7/8. Cut that once on the diagonal to make the Corner Triangle.

## Another Nine-Patch

### Set on Point



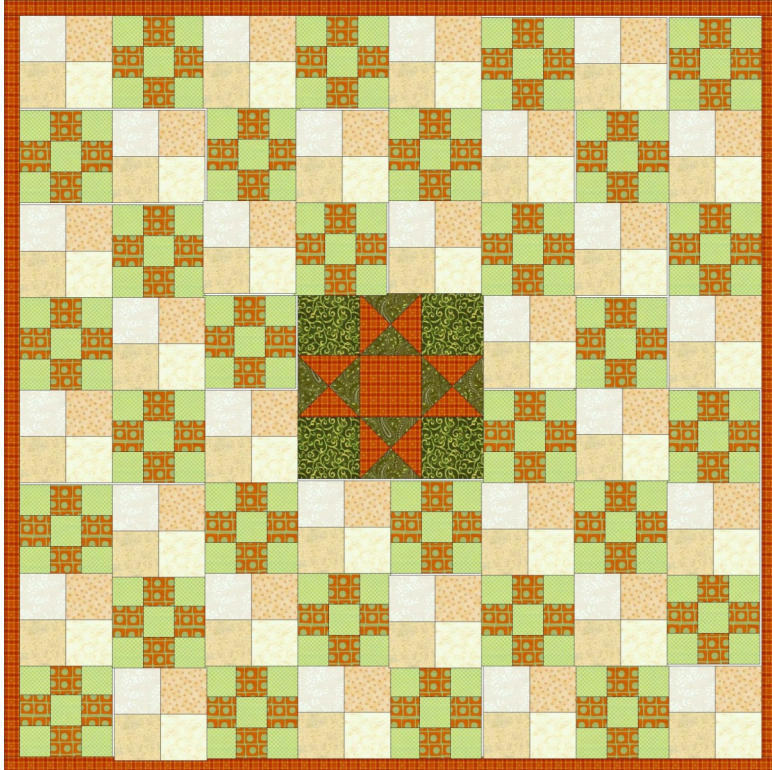
This is really the checkerboard design set on point with setting triangles

All of the setting and corner triangle discussions apply to this quilt.

The colors in the nine-patches are somewhat organized—Can you see the darker square formed by the nine-patches? This example is still quite scrappy.

A more deliberate approach to the nine-patch piecing and layout could yield a very interesting design. It would, however, require a bit more care in the final assembly (if you twist a block, the design changes)

# Variable Sized Nine-Patch Blocks



Make a quilt from different size nine-patches.

Yes, the Ohio Star in the center is a nine-patch block. This example only has one larger nine-patch among the smaller block, but you could easily make additional Ohio Stars and substitute for four of the smaller blocks.

In this example, the smaller blocks are 6" finished. The Ohio Star is a 12" finished block. Sixes and Twelves are easy to combine. The Ohio Star could have a 4" nine-patch in the center.

If your blocks don't combine easily, you could add sashings to make things work.

Notice that the alternating blocks in this layout are 4-patches. Don't limit your alternating blocks to single patches.

## The Sky is the Limit



We hope that you are enjoying the Kudzu Quilt Shop Nine-Patch Quilt-A-Long.

The nine-patch is a simple block that can be combined with other blocks to make a wonderful quilt. It looks good in many settings and it stands on it's own in a quilt.

This booklet has only a few possible design ideas. We can't wait to see your gorgeous creations (remember, they don't need to be quilted!)

**Join us for  
Show and Tell  
Saturday October 2nd**

10am-12pm

Kudzu Blossom Quilt Shop

51 N. Burbank Dr.

Montgomery, AL 36117

334-396-6600

[info@kudzuquiltshop.com](mailto:info@kudzuquiltshop.com)

[www.kudzuquiltshop.com](http://www.kudzuquiltshop.com)

Email a picture of your quilt to [info@kudzuquiltshop.com](mailto:info@kudzuquiltshop.com) if you can't join. We'll post it on the website gallery.