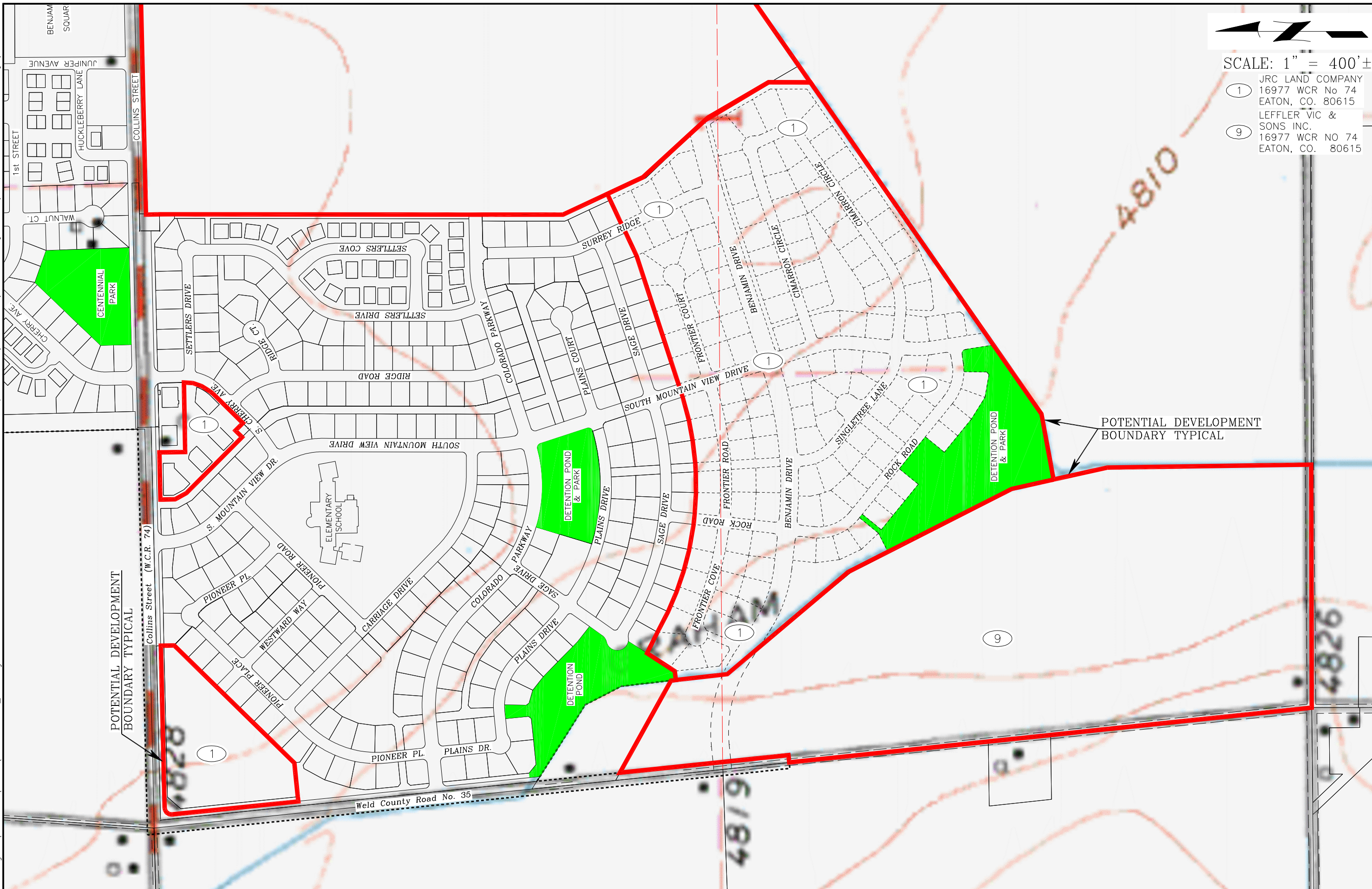


Drawing Tab: JRC LAND COMPANY 11X17.
 Saved: Wed, March 18, 2009, 12:26:35pm
 Drawing: K:\DRAWINGS\95017\DEVELOPMENT_MAP.dwg
 This Drawing is the property of Ketterling, Butherus & Norton Engineers, LLC. (KBN Engineers) and is not to be reproduced, modified or used for any other project or extension of this project except by express written consent of KBN Engineers. KBN Engineers shall not be liable or held responsible for any claims, liability or costs arising out of any reuse or modification of this drawing by others.



SCALE: 1" = 400' ±
 ① JRC LAND COMPANY
 16977 WCR No 74
 EATON, CO. 80615
 ⑨ LEFFLER VIC &
 SONS INC.
 16977 WCR NO 74
 EATON, CO. 80615

KETTERLING, BUTHERUS & NORTON 820 8th Street Greeley, Colorado (970) 395-9880	The Town of Eaton Colorado Commercial & Industrial Development Exhibit		DATE	REVISIONS	DESCRIPTION	BY