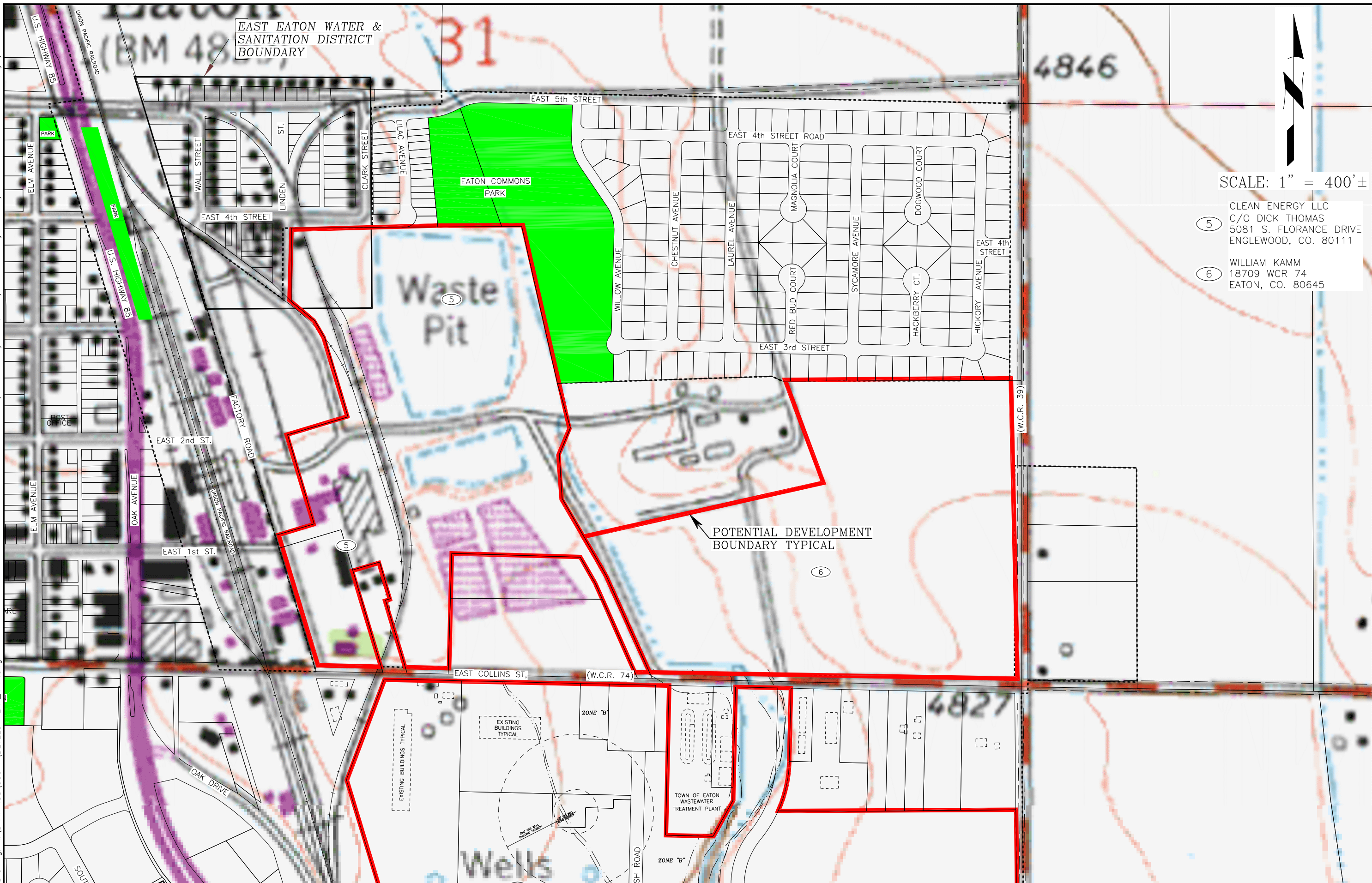


Drawing Tab: KAMM - CLEAN ENERGY 11X17,
 Saved: Tue, February 03, 2009, 1:58:36pm
 Drawing: K:\DRAWINGS\95017\DEVELOPMENT_MAP.dwg



EAST EATON WATER & SANITATION DISTRICT BOUNDARY

Waste Pit

POTENTIAL DEVELOPMENT BOUNDARY TYPICAL

TOWN OF EATON WASTEWATER TREATMENT PLANT

SCALE: 1" = 400'±

- 5 CLEAN ENERGY LLC
C/O DICK THOMAS
5081 S. FLORANCE DRIVE
ENGLEWOOD, CO. 80111
- 6 WILLIAM KAMM
18709 WCR 74
EATON, CO. 80645



<p>KATTERLING, BUTHERUS & NORTON 820 8th Street Greeley, Colorado (970) 395-9880</p>	<p>The Town of Eaton Colorado Commercial & Industrial Development Exhibit</p>		DATE	REVISIONS DESCRIPTION	BY