

MORGANTON SEWING CENTER

WINTER 2011/12

128 North Sterling Street
Morganton, NC 28655
www.morgantonsewing.com
828-439-8050

Christmas

*Jim, Shirley and the Gang Invite You
to Our*



OPEN HOUSE

**FEATURING NEW ITEMS FROM
FALL HOUSTON QUILT MARKET!**

FRIDAY, December 2nd
9:00am – 5:00pm

and

SATURDAY, December 3rd
9:00am – 2:00pm

DEMONSTRATIONS ALL DAY, EACH DAY!

Free Patterns and Ideas ❖ Christmas Specials
Cider and Finger Food
Some Kits Available

*Our Way of Saying **THANK YOU** to All of Our Customers
Who Have Become Like Family To Us!*



 Husqvarna

VIKING

Our Hours Are:

Mon., Tues., Thurs., Fri. 9:00am - 5:00pm • Saturday 9:00am - 2:00pm
CLOSED WEDNESDAYS



Workshops & Classes

Embroidered Cutwork Table Runner

Teacher: Sharon Taylor

An embroidered table runner makes an elegant gift that will be cherished for years to come! Cutwork is an easy technique that's sure to please! There is still time to make this wonderful Christmas gift! One all-day class.

Tuesday, December 6th, 9:30 a.m. - 3:30 p.m. ❖ Class \$30.00, plus materials

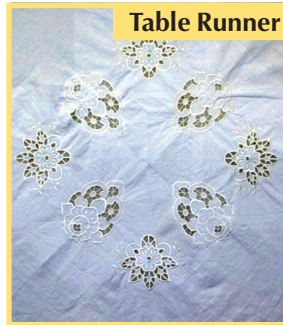


Table Runner

Totally Awesome Mini-Tote

Teacher: Sharon Taylor

This little tote bag is the perfect size to use as a purse - and it's fast and easy! Choosing seasonal fabric means it can be a perfect gift for Christmas! One all-day session.

Thursday, December 8th, 9:30 a.m. - 3:30 p.m. ❖ Class \$30, plus materials



Totally Awesome Mini-Tote

Snowman Embroidery Quilt

Teacher: Shirley Hummel

Let's get a big jump on next Christmas; we'll have this project done way ahead of time!!! This technique is not appliqué, but is done with fill stitches. There are really some neat designs!!

1st Thursday, starting January 5th, February 2nd & March 1st ❖ FREE class with purchase of supplies

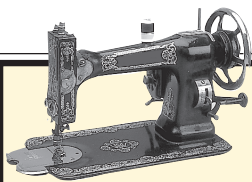


Snowman Embroidery

Quilt Trail BOM Christmas Party

Let's celebrate the Christmas season and the completion of our Quilt Trail Quilts! Bring your quilt - we want everyone to see how beautiful each one is. Food and beverages will be provided.

Monday, December 12th, 5:00 - 7:00 p.m.



IMPORTANT CLASS REGISTRATION POLICY

In order to participate in classes, you MUST pre-register no later than one week before day of class. We also need you to please pay class fee in advance.

CANCELLATION POLICY: Cancellation one week prior to class, full refund or option to participate in alternate class; cancellation within three days in advance, no refund but option to participate in another class; less than three days, forfeiture of class fees. No refunds or alternative options apply to BOM classes. If we must cancel a class, you will have the option of a refund or taking another class. Thank you for your understanding and cooperation.

Square-in-a-Square 1st Saturday Sampler

Teacher: Shirley Hummel

Bring your own ruler or borrow ours to try. Make a table topper or small wall hanging with four blocks and 4" borders, using the Square-in-a-Square method. Come learn this wonderful way to do triangles! Four sessions.

1st Saturday, starting January 7th, 9:00 a.m. - 11:00 a.m. ❖ First Class \$5 kit fee, the each class FREE when you come with your completed block from the previous month!



Home Tweet Home

Teacher: Sharon Taylor

It's finally here!!! Time to start our beautiful McKenn Ryan quilt. We will spend the next nine months perfecting our free-motion appliqué skills, and the results will be worth the wait. There are four class sessions offered each month, and the kits are ready!

Time Options:

2nd Monday of each month, starting January 9th, 9:30 a.m. - Noon, or 5:00 p.m. - 7:30 p.m. OR 2nd Tuesday each month, starting January 10th, 9:30 a.m. - Noon or 1:00 p.m. - 3:30 p.m. ❖ \$20.00 per class, plus materials



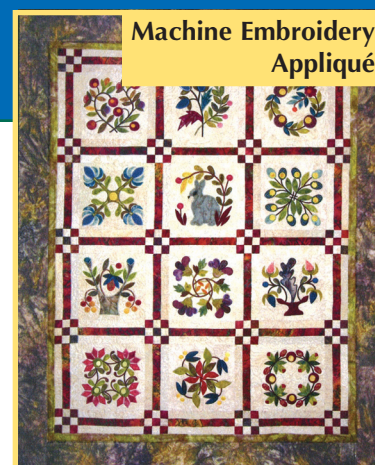
Machine Embroidery Appliqué Quilt

Teacher: Shirley Hummel

What an easy way to do appliqué while using your embroidery machine to the fullest!

We will plan on doing this in six months, although there are 12 blocks. Batiks would work well in this project, or use a mix!

Fourth Thursday, starting January 26th (see calendar), 9:00 a.m. - 12:00 Noon ❖ Class \$20.00 per session, plus materials



Snowy Eve Embroidered Quilt

Teacher: Sharon Taylor

It's back!!! The beautiful embroidered snow scenes combined with Moda's Snowy Eve collection makes an ideal combination for our popular winter quilt. Available in either blues or beiges, this quilt is perfect for you winter decor! Three sessions.

Tuesday, January 17th, February 21st & March 20th, 9:30 a.m. - 12:00 Noon ❖ \$60.00, plus materials



Field of Flowers

Teacher: Sharon Taylor

This is the perfect beginners quilt - using a jelly roll minimizes cutting and guarantees beautiful results. Two sessions will finish this quilt top!

Tuesday, January 24th & February 7th, 9:30 a.m. - 12:00 Noon ❖ Class \$40.00, plus materials



Charming Table Topper

NEW!

Teacher: Sharon Taylor

This beautiful table topper or lap quilt is made using Charm Packs and a Jelly Roll. A great project for beginners or the more experienced quilter!

Monday, February 6th & 27th, 9:30 a.m. - 12:00 Noon ❖ Class \$40.00, plus materials



check us out on Facebook!

Machine Workshops

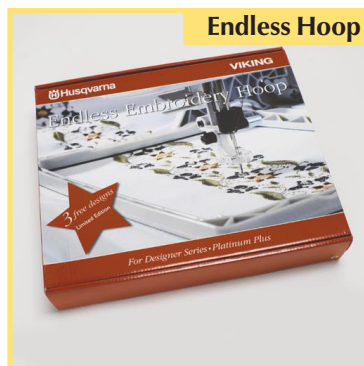
Endless Hoop Class

Teacher: Shirley Hummel

Make a pillowcase and see how easy it is to embroider in an endless row. Go home with a completed pillowcase. If you own a hoop, bring it, or try one of ours!

When you sign up, let us know if you need to borrow, we have a limited number.

Monday, December 12th, 9:00 a.m. - 12:00 Noon ❖
Class FREE for Viking owners, plus small Kit Fee



D1 Owner's Class

Teacher: Shirley Hummel

Friday, January 20th, 9:00 a.m. - 12:00 Noon ❖ FREE
Class if machine purchased at MSC

SE Owner's Class

Teacher: Shirley Hummel

Friday, February 17th, 9:00 a.m. - 12:00 Noon ❖ FREE
Class if machine purchased at MSC

Lace Bowl

Teacher: Shirley Hummel

Learn how to make this beautiful embroidered bowl using your embroidery machine and water soluble stabilizer.

Friday, December 16th, 9:00 a.m. - 12:00 Noon
❖ Class FREE, purchase of design and materials required



Diamond Owner's Class

Teacher: Shirley Hummel

Friday, March 16th, 9:00 a.m. - 12:00 Noon ❖ FREE
Class if machine purchased at MSC

Please Note...

Due to copyright restrictions, we are unable to make copies of patterns for classes. If you take a class, you must purchase the necessary printed materials used for that class. Thank you.

DID YOU KNOW?

Morganton Sewing Center is now on Facebook. Join us to see all the latest happenings, photo uploads from classes, etc.!

Can't make it into the store? Visit us online for secure online shopping with prompt shipping!

morgantonsewing.com



RECEIVE A
\$25 GIFT CARD

WHEN YOU SPEND
\$250 ON REGULAR PRICED MERCHANDISE
AT MORGANTON SEWING CENTER!

Excludes Sewing Machines, Kits, Classes, Sale Items and Machine Repair. No cards to punch - computer keeps track of your purchases!

we repair all makes and models of sewing machines

DECEMBER 2011

JANUARY 2012

MON	TUES	WED	THUR	FRI	SAT	MON	TUES	WED	THUR	FRI	SAT
		STORE CLOSED	1	2 CHRISTMAS OPEN HOUSE	3 CHRISTMAS OPEN HOUSE	2	3	4 STORE CLOSED	5 Snowman Embroidery	6	7 First Saturday Sampler
5	6 Embroid. Cutwork Table Runner	7 STORE CLOSED	8 Tote Bag	9	10	9 Home Tweet Home	10 Home Tweet Home	11 STORE CLOSED	12	13	14
12	13 Endless Hoop Class BOM Party 5-7	14 STORE CLOSED	15	16 Lace Bowl	17	16	17 Snowy Eve Embroid. Quilt	18 STORE CLOSED	19	20 D1 Owners' Class	21
19	20	21 STORE CLOSED	22	23	24	23	24 Field of Flowers I	25 STORE CLOSED	26 BOM - Machine Emb./Applique	27	30
26	27	28 STORE CLOSED	29	30	31	31		STORE CLOSED			

FEBRUARY 2012

MARCH 2012

MON	TUES	WED	THUR	FRI	SAT	MON	TUES	WED	THUR	FRI	SAT
		1	2 Snowman Embroidery	3	4 First Saturday Sampler				1 Snowman Embroidery	2	3 First Saturday Sampler
6 Charming Table Topper I	7 Field of Flowers II	8 STORE CLOSED	9	10	11	5	6	7 STORE CLOSED	8	9	10
13 Home Tweet Home	14 Home Tweet Home	15 STORE CLOSED	16	17 Designer SE Owners'	18	12 Home Tweet Home	13 Home Tweet Home	14 STORE CLOSED	15	16 Designer Diamond	17
20	21 Snowy Eve Embroid. Quilt	22 STORE CLOSED	23 BOM - Machine Emb./Applique	24	25	19	20 Snowy Eve Embroid. Quilt	21 STORE CLOSED	22 BOM - Machine Emb./Applique	23	24
27 Charming Table Topper II	28	29 STORE CLOSED				26	27	28 STORE CLOSED	29	30	31

Viking's New Baby! The H | CLASS™ 100Q



Featuring 20 Stitches • Built-In Needle Threader

Compact, Lightweight & Computerized

Weights only 15 lbs. (7kg), making it the perfect machine for classes or retreats. Computerized machine automatically adjusts for the selected stitch.

One-Step Buttonholes

Two quick, one-step buttonholes. Adjust stitch width up to 7mm.

Needle Up/Down

One touch sets the needle to stop up or down for pivoting, appliqué and accurate sewing.

Extra-High Presser Foot Lift

Thick fabrics and multiple layers can be placed easily under the presser foot.

Speed Control Slide Adjust the sewing speed at any time.

Start/Stop Button Sew without the foot control.

\$499

0% INTEREST FOR 36 MONTHS!!!

Husqvarna

VIKING

When You're Ready for the Best

MORGANTON SEWING CENTER

128 North Sterling Street
Morganton, NC 28655

828-439-8050

www.morgantonsewing.com

E-Mail: morgantonsewing@bellsouth.net

PRSR STD
U.S. Postage
PAID
Morganton, NC
Permit No. 97

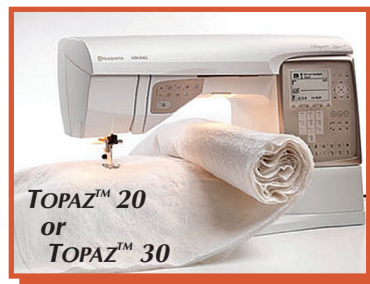
December 2011,
& January, February, March
2012 Class Schedule

TIME DATED MATERIAL

Designer™ Days

0% INTEREST FOR 36 MONTHS!!!

Designer Ruby™



Only...
\$15275*
/MONTH

As Low
As...

\$250⁰⁰*
/MONTH



Designer Diamond
deLuxe™

Designer Topaz™

Starting
At... **\$5555***
/MONTH

**EVENT STARTS
DECEMBER 15,
2011**

*Minimum monthly payment is based on 36 month financing. Payment does not include sales tax. Amount will vary. Limited time offer.