

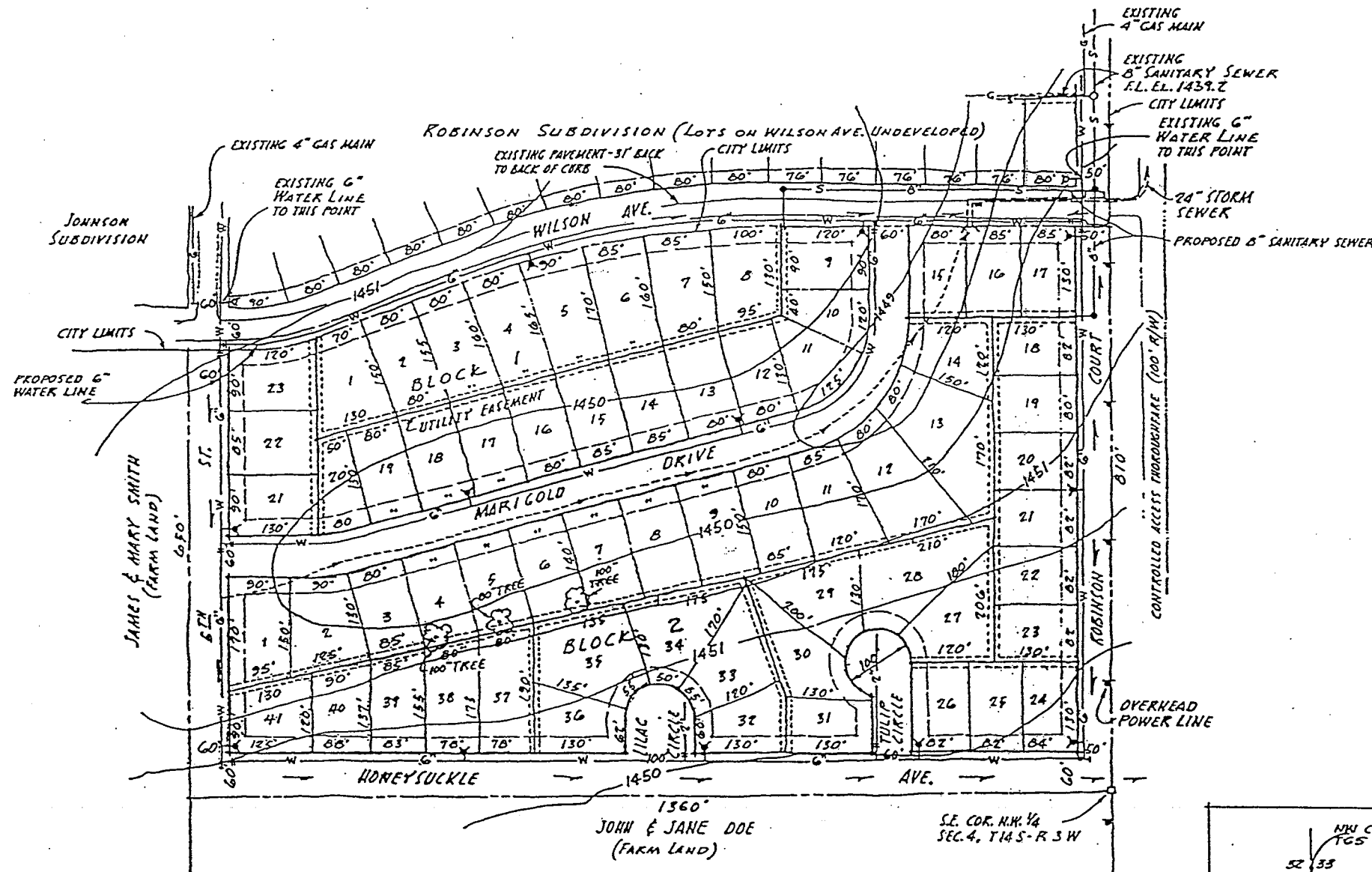
Sample Preliminary Subdivision Plat...

ORDER OF STREET DEVELOPMENT

- 5TH ST.-WILSON AVE. TO MARIGOLD DRIVE.
ALL OF MARIGOLD DRIVE.
- ROBINSON COURT.
- 5TH ST.-MARIGOLD DRIVE TO HONEYSUCKLE AVE.
ALL OF HONEYSUCKLE AVE., LILAC CIRCLE AND TULIP CIRCLE

ORDER OF PUBLIC UTILITY DEVELOPMENT

- WATER TO NORTH SIDE OF BLOCK 1 AND SEWER TO BLOCK 1.
- WATER TO LOTS ON MARIGOLD DRIVE.
- WATER AND SEWER TO LOTS ON ROBINSON COURT.
- SEWER TO REMAINDER OF BLOCK 2 AND WATER TO LOTS ON HONEYSUCKLE AVE.

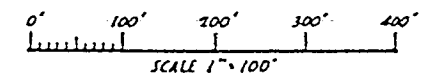
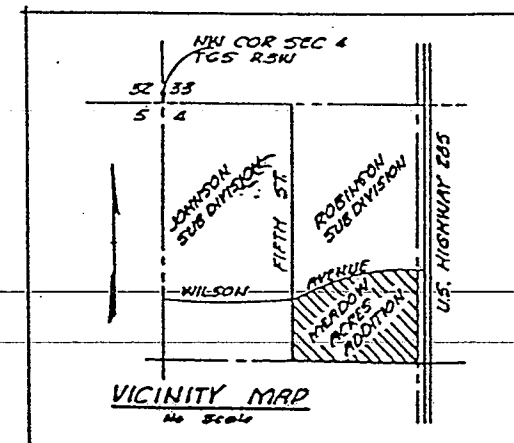


NOTES:

- DRAINAGE AREA TO 24" RCP STORM DRAIN = 35 ACRES.
- AREA OF ADDITION = 24 ACRES.
- ALL UTILITY EASEMENTS 20' WIDE, 10' FROM EACH LOT.
- ALL LOTS TO BE SOLD AS FIRST DWELLING RESIDENTIAL.
- LOTS DRAIN TO STREETS, STREETS DRAIN TO THOROUGHFARE DRAINAGE DITCHES.
- ALL BUILDING SETBACK LINE = 25'
- PROPOSED PAVING WIDTHS - 31' BACK TO BACK 35' RADII FOR CUL-DE-SACS
- GAS, POWER & SANITARY SEWER TO BE PLACED IN UTILITY EASMENTS
- PROTECTIVE COVENANTS SUBMITTED AS APPENDIX I TO THIS PLAT.
- ALL NEW SANITARY SEWER LINES TO BE 8" DIA.

LEGEND

- EXISTING DRAINAGE COURSE
- PROPOSED STREET DRAINAGE
- UNDERGROUND STORM DRAIN
- SANITARY SEWER & MANHOLE
- FIRE HYDRANT
- CONCRETE PAVEMENT
- POWER POLE
- WATER LINE
- GAS LINE



PRELIMINARY PLAT of
MEADOW ACRES ADDITION

GEORGE E. DAY OWNER-SUBDIVIDER
(CITY XI, STATE XI)

SURVEYED AND PLATTED BY:
(CONSULTANT'S NAME AND ADDRESS)
(DATE)