

Mandalay Medley #1521
Designed by Ruth Vincent

Shaped jacket in three lengths and two front closure choices has an interesting notched neckline. Show off the unusual jacket neckline with a blouse made to pair with it. *See p. 1 for Suggested fabrics and notions and for line drawings.*

Sizes: XXS (0) – Bust 30-31", Hip 33-34"; XS (2-4) – Bust 32-33", Hip 35-36"; S (6-8) – Bust 34-35", Hip 37-38"; M (10-12) – Bust 36-38", Hip 39-41"; L (14-16) – Bust 39-42", Hip 42-45"; XL (18-20) – Bust 43-46", Hip 46-49"; 2XL (22-24) – Bust 47-50", Hip 50-53"; 3XL (26-28) – Bust 51-54", Hip 54-57"

View	Fabric	Size	45" Fabric	Size	54" Fabric
View 1	Fabric I - Center fronts, Yokes, Half Pocket, Cuff	XXS-S	- 1 yd	All sizes - 7/8 yd.	
		M-L	- 1 1/8 yd.		
		XL-3XL	- 1 1/4 yd.		
	Fabric II - Side Fronts, Side Backs, Center Back, Sleeves, Half Pocket	XXS-S	- 2 yd.	XXS-M	- 1 1/2 yd.
		M-L	- 2 1/8 yd	L-XL	- 1 5/8 yd.
		XL-3XL	- 2 1/4 yd.	2XL-3XL	- 1 2/3 yd
	Fabric III - Binding	All sizes - 3/4 yd			
	Fusible Interfacing -22" wide to interface 45" or 54" fabric	XXS-S	- 2 yd	All sizes - 2 5/8 yd	
		M-L	- 2 1/4 yd		
		XL-3XL	- 2 1/2 yd		
	Lining	XXS-L	- 2 7/8 yd		
		XL-3XL	- 3 1/8 yd		
View 2	Fabric I - Center fronts, Yokes, Cuff	XXS-XS	- 1 yd	XXS-M	- 1 yd
		S-XL	- 1 1/8 yd	L-3XL	- 1 1/8 yd
		2XL-3XL	- 1 1/2 yd		
	Fabric II - Side Fronts, Side backs, Center Back, Pocket, Sleeve	XXS-S	- 2 1/2 yd	XXS-M	- 1 2/3 yd
		M-L	- 2 5/8 yd	L-XL	- 1 7/8 yd
		XL-3XL	- 2 2/3 yd	2XL-3XL	- 2 1/4 yd
	Fabric III - Binding	All sizes - 3/4 yd			
	Fusible Interfacing - 22" wide to interface 45" or 54" fabric	XXS-XS	- 2 yd	XXS-M	- 3 yd
		S-XL	- 2 1/4 yd	L-3XL	- 3 3/8 yd
		2XL-3XL	- 3 yd		
	Lining	XXS-M	- 2 3/4 yd		
		L-3XL	- 3 yd		
View 3	Fabric I - Center Fronts, Yokes, Cuff	XXS-S	- 1 1/4 yd	XXS-M	- 1 3/8 yd
		M-XL	- 1 1/2 yd	L-3XL	- 1 1/2 yd
		2XL-3XL	- 1 2/3 yd		
	Fabric II - Side Fronts, Side Backs Center Back, Sleeve, Pockets	XXS-S	- 3 yd	XXS-M	- 2 1/8 yd
		M-L	- 3 1/8 yd	L-XL	- 2 1/4 yd
		XL-3XL	- 3 1/3 yd	2XL-3XL	- 2 7/8 yd
	Fabric III - Binding	All sizes - 1 yd			
	Fusible Interfacing - 22" wide to interface 45" or 54" fabric	XXS-S	- 2 1/2 yd	XXS-M	- 4 1/8
		M-XL	- 3 yd	L-3XL	- 4 1/2
		2XL-3XL	- 3 1/3 yd		
	Lining	XXS-S	- 3 3/8 yd		
		M-XL	- 3 5/8 yd		
		2XL-3XL	- 4 yd		
Blouse	Fabric	XXS-M	- 1 7/8 yd	XXS-XS	- 1 1/2 yd
		L	- 2 yd	S-L	- 1 5/8 yd
		XL-3XL	- 2 1/4 yd	XL-3XL	- 1 2/3 yd

1.

Suggested Fabrics: **Jacket** - Mid- to heavy weight cottons, linen, lightweight wool. **Blouse** - Knits, stretch wovens, woven rayon, wool challis, light- to mid-weight silk. **Lining** - Polyester or rayon lining fabric, China silk, lightweight cotton. **Interfacing** - Light to medium weight fusible such as Touch O' Gold II, Fusi-Knit, etc. **Notions:** **View 1** - one 1" button, 18" of 1/4" wide ribbon for inside tie, light shoulder pads for set in sleeves. **Views 2 & 3** - three 1" - 1 1/2" buttons, one snap, light shoulder pads for set in sleeves. **Blouse** - three 1/2" buttons

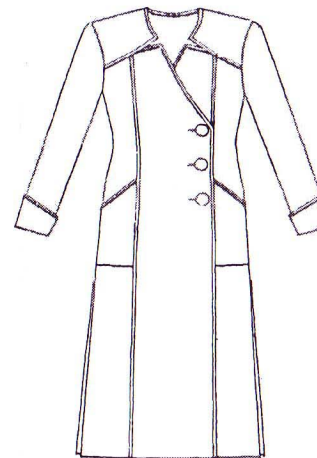
View I



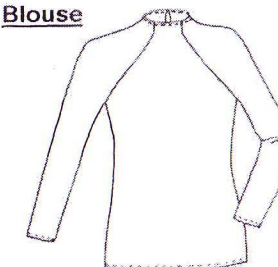
View II



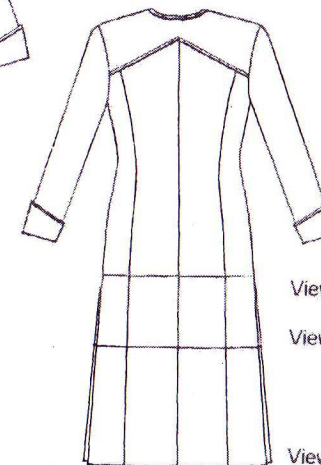
View III



Blouse



Back - All Views



View 1

View 2

View 3

GRAINLINE GEAR (A Division of Lorraine Torrence Designs)

2112 SO SPOKANE ST, SEATTLE WA 98144

(800) 369-4974 * FAX (206) 725-6362

www.grainline-gear.com

