

Suggested Retail  
Price - \$16

Urban Treasures #1918 © 2006

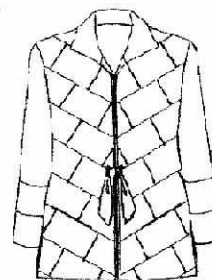
Year 'round, lined jacket in three views goes from casual to dressy with a change of fabric. Choose from diagonal piecing with a tie closure, vertical panels with button tab, or bias cut lower panel with zipper closing. Or mix and match views with closure!  
**Sizes:** XXS (0-2) Bust 30-31", Hip 33-34"; XS (4-6) Bust 32-33", Hip 35-36"; S (8-10) Bust 34-35", Hip 37-38"; M (12-14) Bust 36-38", Hip 39-41"; L (16-18) Bust 39-42", Hip 42-45"; XL (20-22) Bust 43-46", Hip 46-49"; XXL (24-26) Bust 47-50", Hip 50-53"; XXXL (28) Bust 51-54", Hip 54-57". **SEE PAGE 1 FOR LINE DRAWINGS OF VIEWS.**

VIEW ONE	45" Fabric	54" Fabric
<b>Main Fabric</b> - Piecing, Lower Back, Collars, Sleeves, Facings, Sleeve bottom, Bias trim, Tie	XXS-L: 2 3/4 yds XL-XXXL: 3 yds	2 1/4 yds 2 1/2 yds
<b>Contrast #1</b> - Piecing, Sleeve Insets	All sizes: 5/8 yd	1/2 yd
<b>Contrast #2</b> - Piecing	All sizes: 1/2 yd	3/8 yd
<b>Muslin Foundation</b> - Front, Back	All sizes: 2 yds.	
<b>Lining</b> - Front, Back, Pockets, Upper Sleeves.	XXS-L: 2 1/2 XL-XXXL: 2 5/8	
<b>Interfacing (22" wide)</b>	All sizes: 1 yd.	
<b>VIEW TWO</b>		
<b>Main Fabric</b> - Center Fronts, Back; Side Fronts, Backs; Sleeves; Facings, Collar, Icb	All sizes: 2 1/4	1 2/3 yd 1 3/4 yd
<b>Contrast</b> - Middle Back, Upper Middle Front, Lower Middle Fronts, Pockets	All sizes: 1 5/8	All sizes: 1 1/8
<b>Lining</b> - Fronts, Back, Upper sleeve, Pockets, (if Contrast is heavy)	XXS-L: 2 1/2 yds XL-XXXL: 2 5/8 yds	2 5/8 yds. 2 2/3 yds
<b>Interfacing (22" wide)</b>	All Sizes: 1 yd	
<b>VIEW THREE (All one fabric)</b>		
<b>Main Fabric</b> - Upper Fronts, & Backs, Collar, Upper Sleeve, Facings, Sleeve inset, Pockets.	XXS-L: 3 1/2 yds XL-XXXL: 3 5/8 yds	2 1/2 yds 2 7/8 yds
<b>Lining</b> - Fronts and backs, upper sleeves, pockets	XXS-M: 2 1/2 yds L-3XL: 2 5/8 yds	
<b>Interfacing (22" wide)</b>	All sizes: 2 1/4 yd	
<b>VIEW THREE (With Contrast)</b>		
<b>Main Fabric</b> - Upper Fronts & Backs, Upper Sleeves, Facings	XXS-L: 2 1/4 yds XL-3XL: 2 3/8 yds	1 7/8 yds 2 1/8 yds
<b>Contrast</b> - Lower Fronts & Backs, Sleeve insets, Collars	All sizes: 1 3/8	All sizes: 1 yd.
<b>Lining and Interfacing</b>	As v.3 above	

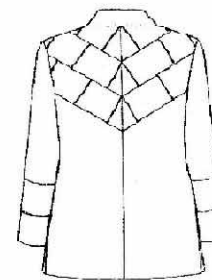
**Suggested Fabrics:** Medium to heavy weight cottons, linen, wool, silk. Silk or polyester lining fabrics.

**Notions:** View 2: 2 Buttons, 7/8" - 1"; View 3: Separating Zipper, 20-22"

**LORRAINE TORRENCE DESIGNS**  
 2112 SO. SPOKANE ST.  
 SEATTLE, WA 98144  
 (800) 369-4974 \* FAX (206) 725-6362  
[www.lorrainetorrence.com](http://www.lorrainetorrence.com)



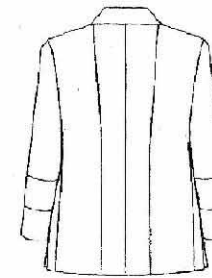
View 1 - Front



View 1 - Back



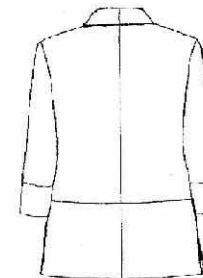
View 2 - Front



View 2 - Back



View 3 - Front



View 3 - Back

1.