

Suggested Retail  
Price: \$14

## Bungee Jumper #1519

Designed by Deanne Bodeau

I don't know about you but this is just about the closest thing I'll ever get to "Bungee Jumping". This "comfort fit" jumper is a perfect place to combine your favorite coordinating fabrics or a blank canvas for your creative piecing, applique or embellishments. It's a quick sew-up, limited only by your imagination! Tighten your belt, secure your ankle straps, take the risk and come jump with me. I challenge you to be a jumper, too!

**SIZES:** **XXS** (0) Bust 30-31/Hip 33-34; **XS** (2/4) Bust 32-33/Hip 35/36; **S** (6/8) Bust 34-35/Hip 37-38; **M** (10/12) Bust 36-38/Hip 39-41; **L** (14/16) Bust 39-42/Hip 42-45; **XL** (18/20) Bust 43-46/Hip 46-49; **XXL** (22/24) Bust 47-50/Hip 50-53; **XXXL** (26/28) Bust 51-54/Hip 54-57.

View	Fabric	Size	45"
<b>View 1</b> Pieced View	<b>Fabric 1</b> - Side panels and Front Placket	XXS-M L-XXXL	1 1/3 yard 1 3/4 yard
	<b>Fabric 2</b> - Sections in Front & Back panels (yellow in cover drawing)	All sizes	1/2 yard
	<b>Fabric 3</b> - Sections in Front & Back Panels (gray in cover drawing)	All sizes	2/3 yard
	<b>Fabric 4</b> - Sections in Front & Back (pink in cover drawing)	All sizes	1 yard
	<b>Fabric 5</b> Dividing Inserts, binding, back triangle trim	All sizes	1/2 yard
<b>Note:</b> You may substitute 8 fat quarters (all different or some duplicates), or some Batik panels, for Fabrics 2, 3 and 4 in all sizes.			
<b>View 2</b> - One fabric, contrast binding	<b>Fabric 1</b> - All one fabric; no kick pleat in back	All sizes	3 1/2 yards
	<b>Fabric 2</b> Neck, armhole binding; back triangle	All sizes	Fat Qtr.
<b>View 3</b> -V-Neck, pieced	<b>Fabric 1</b> - Side panels, dividing inserts, bias binding.	XXS-L XL-XXXL	1 1/2 yards 2 yards
	<b>Fabric 2</b> - Largest pieces front and back	All sizes	1 yard
	<b>Fabrics 3 and 4</b> - Front and back sections Use one of these for triangle trim	All sizes	1/2 yard ea.

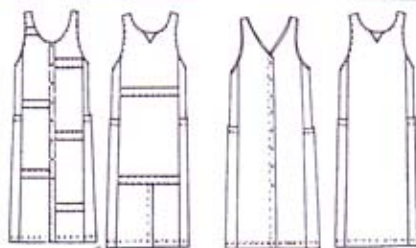
**SUGGESTED FABRICS:** Light to Medium weight cottons, rayon, silk, linen or light-weight wool. **TIP:** varying scale, texture and color, but not value, will create a garment that is more figure flattering. Too many different values could look choppy. You want a smooth, safe jump!

**NOTIONS:** Sewing thread. Thread for top stitching- regular or heavy weight. 7-10 buttons.

### GRAINLINE GEAR

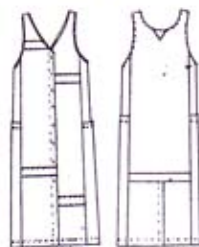
A Division of Lorraine Torrence Designs  
2112 SO SPOKANE ST  
SEATTLE WA 98144  
(800) 369-4974 \* FAX (206) 725-6362  
[www.grainline-gear.com](http://www.grainline-gear.com) © 2004

Rev. 1-05



View 1

View 2



View 3