

Suggested Retail
Price - \$12.00

The Tablecloth Shirt (Revised) #1910

Use that treasured heirloom tablecloth, a new ethnic fabric tablecloth, a garage sale find, panel fabric or your favorite printed fabric with your own added border. This shirt can be made in two lengths, two sleeve lengths and two collar variations and has an optional pocket. This new revision has more accurate sizing and a wider size range.

SIZES: XXS: Bust 31-32, Hip 32-33; XS: Bust 33-34, Hip 34-36; S : Bust 35-37, Hip 37-39; M: Bust 38-40, Hip 40-43; L: Bust 41-44, Hip 44-46, XL: Bust 45-48, Hip 47-50; 2XL: Bust 49-52, Hip 51-54; 3XL: Bust 53-55, Hip 55-58.

SUGGESTED FABRICS: Tablecloths, tablecloth panel yardage, border prints, other fabrics in medium weight cottons, linens, silks, rayons.

FABRIC REQUIREMENTS:

* A 60" X 90" tablecloth is large enough to cut any version in any size including the facings.

* A 60" x 60" tablecloth is large enough to cut up to 3XL in either length with short sleeves and without facings. (Cut facings from coordinating fabric*)

* A 60" x 60" tablecloth is large enough to cut up to size M in either length with long sleeves and without facings. (Cut facings from coordinating fabric*.)

* 3 yards of 45" wide fabric, printed with a 36" square tablecloth panel and extra borders on the selvage edges is required to cut XS - 3XL in either length with short sleeves and with facings. Long sleeves in either length require 2 additional yards of the panel fabric for all sizes up to 3XL.

* For using 45" wide yardage to which you add your own border:

Long version, long sleeve: XXS-M 3 yds

L-XL 3 1/8 yds

2XL-3XL 3 1/4 yds

Short Version, short sleeve: XXS-S 2 1/4 yds

S-M 2 1/3 yds

L-XL 2 1/2 yds

2XL-3XL 2 5/8 yds

Border Fabric (all sizes, either style)
with 4 border repeats - 1 1/4 yards
with 6 border repeats - 1 yard

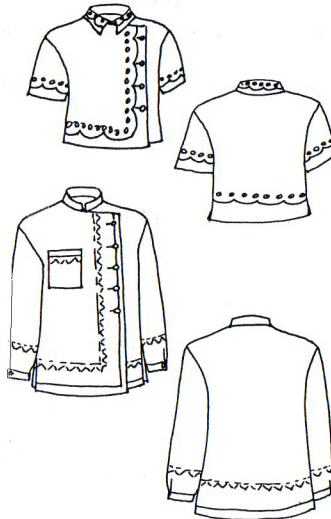
*Facing fabric: 1 yd. for long shirt, 3/4 yd for short

Notions: Sewing thread to match.

Lightweight fusible interfacing; buttons:

four - five (4-5) for the short shirt and

seven - eight (7-8) for long, long sleeved shirt.



Lorraine Torrence Designs

2112 SO SPOKANE ST

SEATTLE WA 98144

(206) 725-8687 * FAX (206) 725-6362

www.lorrainetorrence.com

© 2001 Lorraine Torrence Designs

(rev. 5/07)

