

Suggested Retail
Price - \$12.00

11.

IDEAS FOR PANEL DECORATION



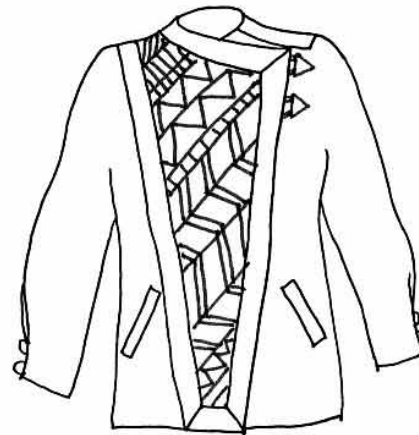
Fabric manipulation



Appliqué



Curved seam piecing with appliqué



Seminole patchwork

Panel Play Jacket #1906

SIZES: XS - Bust 31"-33"; S - Bust 34"-36"; M - Bust 37"-39"; L - Bust 40"-43"; XL - Bust 44"-47".

SUGGESTED FABRICS: **Panel Area:** Light to medium weight cottons; medium weight silks (pongee, shantung, etc.); light weight wools; rayons; denim. **Main body of jacket:** Silks; linen; medium weight cottons; velveteen; light weight wools; medium weight rayons. **Foundation:** Muslin. **Lining:** Light weight silk, polyester or rayon lining fabric.

MATERIALS:

For panel - For Drunkard's Path panel, see supplemental instructions inside. For panel of squares as in 2nd photo: Strips (1 each) cut 1 1/2" wide and 36"-45" long of about 12 different fabrics. (For panel of a single, unpieced fabric) 1 yard, 36" or 45" wide for panels cut lengthwise on the grain, 3/4 yard, if cut diagonally across the grain, or 1/2 yard, if cut across the grain. **Note: The panel may be filled with piecing, appliqué, threadwork, beading, etc. Instructions are given only for the pieced version shown on the cover or a plain (unpieced) panel. For panel border** - 1/4 yard of 36" or 45" wide fabric. **For foundation** - 3 yards (all sizes) 45" wide muslin, preshrunk. **For main body of jacket** - 2 1/2 yards 45" wide fabric (XS - L), or 2 3/4 yards (XL). **For lining** - 3 yards 36"-45" wide lining fabric (all sizes.) **For interfacing** - 1/4 yard 45" wide light weight fusible (Touch of Gold is good) **Other materials and supplies** - 3 yards (or equivalent) light weight batting or pre-shrunk cotton flannel (all sizes). Thread, all purpose, the colors of the main body of vest, lining. Thread, decorative rayon or other topstitching, the color of the panel border. Thread, your choice, color of jacket body, for quilting. Ten 3/4" buttons. Rotary cutter, cutting mat (17" x 23" min.), 6" x 24" cutting ruler

LORRAINE TORRENCE DESIGNS

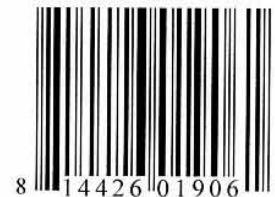
2112 S. SPOKANE STREET

SEATTLE, WA. 98144

800-369-4974

www.lorrainetorrence.com

©1998, rev. 2-02



©Lorraine Torrence 1998