

Class Act Ensemble #1912

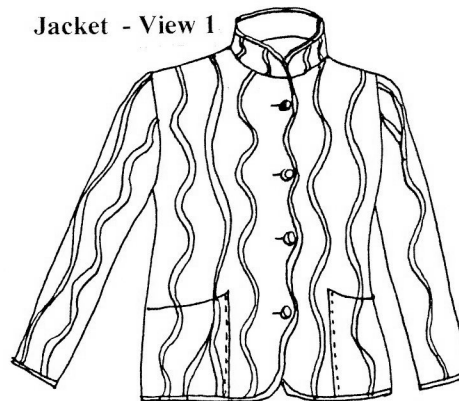
Here's a whole wardrobe in one pattern! Choose from four jacket views, each with a long and short-sleeved version, and pants in either long or cropped lengths. View 1 jacket is hip-length with patch pockets, mandarin collar and bound edges. Curvy line design with raw-edged, curvy pieces, finished with topstitched self-bias. View 2 is the shorter length without the collar but includes the same curved-edge front closure as v.1. View 3 with straight front closure and the mandarin collar is pieced squares. View 4 is short jacket of pieced squares finished with self-ruffle. The pants are straight legged and have an elastic waist that can go all around the waist or start and end with double side-front pleats. **See drawings on p.15.**

Sizes: XXS (0-2) Bust 30-31", Hip 33-34"; XS (4-6) Bust 32-33", Hip 35-36"; S (8-10) Bust 34-35", Hip 37-38"; M (12-14) Bust 36-38", Hip 39-41"; L (16-18) Bust 39-42", Hip 42-45"; XL (20-22) Bust 43-46", Hip 46-49"; XXL (24-26) Bust 47-50", Hip 50-53"; XXXL (28) Bust 51-54", Hip 54-57".

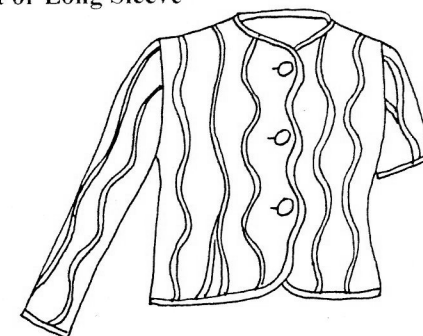
JACKET AND PANTS VIEWS:

Note: All jacket views can be made without curves or piecing, in a single fabric. Muslin foundation may be omitted for this option.

Jacket - View 1



Jacket - View 2
Short or Long Sleeve



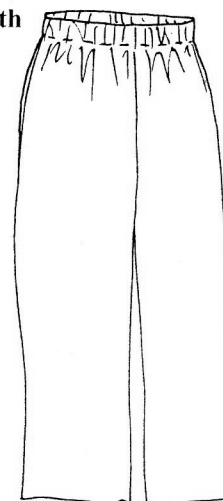
Jacket - View 3



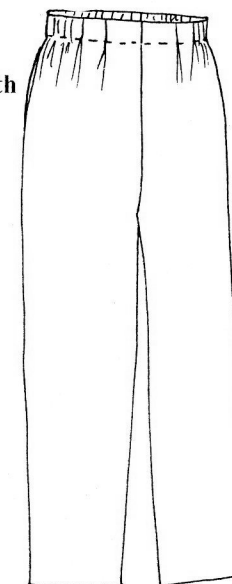
Jacket - View 4
Short or Long Sleeve



Cropped Pants with
Elastic



Long Pants with
Front Pleats
And Elastic



View 1 Jacket (long with collar and curves)	All sizes 45" Wide Fabric
Muslin Foundation and Lining	2 ½ yards of each (2 1/8 for short sleeves)
Jacket Fabric (if made from 1 fabric)	2 ½ yards (2 1/8 for short sleeves)
Jacket Fabric (for curvy line design)	XXS-M ¼ yard each of 5 fabrics L-3XL 7/8 yard each of 5 fabrics
Binding	½ yard (can be more of one of above 5)
View 2 Jacket (short with curves, no collar)	All Sizes
Muslin Foundation and Lining	XXS-M 2 1/8 yds ea (1 7/8 short sleeves) L-3XL 2 1/3 yds ea. (2 yds short sleeves)
Jacket Fabric (if made from 1 fabric)	Same amount as muslin and lining
Jacket Fabric (for curvy line design)	XXS-M ¼ yd each of 5 fabrics L-3XL 7/8 yd each of 5 fabrics
Binding	½ yard (can be more of one of above 5)
View 3 Jacket (long with collar and squares)	All Sizes
Muslin Foundation and Lining	2 ½ yards of each (2 1/8 for short sleeves)
Fabric for pieced squares	XXS-XL ½ yd each of 6 fabrics 2XL-3XL 5/8 yd each of 6 fabrics
Binding	½ yard (can be more of one of above 6)
View 4 Jacket (short with squares and ruffle)	All sizes
Muslin Foundation and Lining	XXS-M 2 1/8 yds ea. (1 7/8 short sleeves) L-3XL 2 1/3 yds ea. (2 yds short sleeves)
Fabric for pieced squares	½ yard ea. of 6 fabrics
Ruffle	½ yard (can be more of one of above 6)
Pants	XXS-M 2 5/8 yards (2 ¼ for cropped) L-3XL 2 ¾ yards (2 ½ for cropped)

SUGGESTED FABRICS: Medium weight cottons, linens, silks, rayons, lightweight wools. Cotton muslin for foundation. Rayon, polyester or silk lining. **NOTIONS:** Sewing thread to match. Interfacing (opt.); buttons: 4 (v.1), 3 (v.2), 5-7 (v.3) and 4-6 (v.4.) Freezer paper (available in grocery stores.) Waist length of 1 ½" wide elastic. 8" of 1 ½" grosgrain ribbon for pants with tucks.

LORRAINE TORRENCE DESIGNS
2112 SO. SPOKANE ST.
SEATTLE, WA 98144
(206) 725-8687 * FAX (206) 725-6362
www.lorrainetorrence.com

