

Suggested Retail
Price - \$16

Pacific Rim Coat/Vest #1917

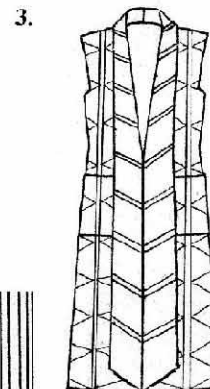
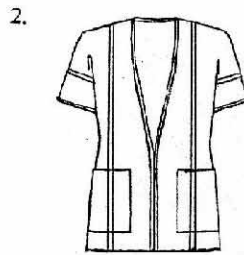
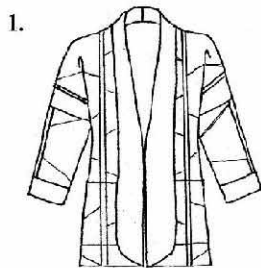
An easy-fit, easy-make lined coat with an abundance of variations to fit any wardrobe need! Make it with long sleeves, short sleeves or as a vest with no sleeves. Make it in below-hip or mid-calf lengths. Make it with a rounded-bottom collar, angled-bottom collar or with binding instead of a collar. Make it in one fabric, choose from 3 included piecing options or design your own piecing. The variations are endless!

Sizes: XXS – Bust 30-31", Hip 33-34"; XS – Bust 32-33", Hip 35-36"; S – Bust 34-35", Hip 37-38"; M – Bust 36-38, Hip 39-41; L – Bust 39-42", Hip 42-45"; XL – Bust 43-46", Hip 46-49"; 2XL – Bust 47-50", Hip 50-53"; 3XL – Bust 51-54", Hip 54-57".

Center Back Finished Lengths: Short lengths: XXS-28"; XS-28 3/4"; S-29 1/2"; M-30 1/4"; L-31"; XL-3XL-31 3/4". Long length: XXS-45 1/4"; XS-46 1/4"; S-47 1/4"; M- 48 1/4"; L-49 1/4"; XL-3XL-50 1/4".

All yardages for 44-45" wide fabric	XXS-L	XL-3XL
1. Short Coat with Long Sleeves, Plain Collar, Piecing (Large photo on cover)		
Muslin foundation	2 1/2 yds.	2 1/2 yds.
Fabric for Piecing Trapezoids	12-14	1/3 yd. pieces
Collar, Cuffs, Facings and Spacer Strips	2 1/8 yds.	2 3/8 yds.
Lining	2 yds.	2 1/8 yds.
Interfacing 22" wide	1 1/8 yds.	
2. Short Coat with Short Sleeves, Binding, No Piecing (Small Upper Photo on cover)		
Muslin Foundation	2 yds.	2 1/8 yds.
Fabric for 6" wide unpieced strips	2 1/2 yds.	2 1/2 yds.
Facings, Spacer Strips, Binding	2 1/8 yds.	2 3/8 yds.
Lining	2 yds.	2 1/8 yds.
Interfacing 22" wide	1 1/8 yds.	
3. Long Vest with Piecing, Pieced Collar (Small Lower Photo on cover)		
Muslin	3 yds.	4 3/4 yds.
Fabric for Piecing Triangles and Collar Piecing	12-14	1/3 yd. pieces
Facings, Spacer Strips, Under Collar	3 1/8 yds.	3 1/2 yds.
Lining	2 1/2 yds.	2 3/4 yds.
Interfacing 22" wide	1 1/8 yds.	

SUGGESTED FABRICS: Medium weight cottons, linens, silks, light weight wools. Cotton muslin for foundation. Rayon, polyester or silk lining



LORRAINE TORRENCE DESIGNS © 2006
2112 SO. SPOKANE ST.
SEATTLE, WA 98144
(206) 725-8687 * FAX (206) 725-6362
www.lorrainetorrence.com (Rev. 8-07)

