

**BREEZY BLOCK JACKET #1911**

**A shaped, color block jacket, lined or unlined, with long or short sleeves.**

**SIZES:** XXS - size 0; XS - size 2-4; S - size 6-8; M - Size 10-12; L - Size 14-16; XL - Size 18-20; XXL - Size 22-24; XXXL - Size 26-28.

**SUGGESTED FABRICS:** **Outside:** Medium to heavy weight cottons; medium weight silks such as pongee, broadcloth, dupioni, shantung, noil; lightweight wools; medium weight linen. **Lining:** Lightweight silk, polyester or rayon lining fabric. **Interfacing:** Lightweight woven fusible.

**MATERIALS:** This jacket is made from 9 different fabrics. Pieces that are rather close in value rather than very high contrast will result in a more unified and sophisticated garment.

45" or 60" fabric (All views)	XXS-XL	XXL-XXXL
Sleeves, side fronts, side backs, front facings	Two different 7/8 yard pieces	Two different 1 yard pieces
Front and back yokes and pockets	Two different fat quarters*	Two different 1/2 yard pieces
Upper center fronts & backs; lower center fronts and backs	Four different fat quarters*	Four different fat quarters*
Bias trim	One fat quarter* (XXS - L)	5/8 yard (XL-XXXL)
Lining (Opt.)	2 1/2 yards	2 2/3 yards
Interfacing	7/8 yard	1 yard
Notions: Thread for construction, thread to match bias trim, 4-5 buttons, light shoulder pads.		

\*If fat quarters are not available in the fabric you're using, you will need 1/2 yds.

**LORRAINE TORRENCE DESIGNS**

2112 SO. SPOKANE ST.

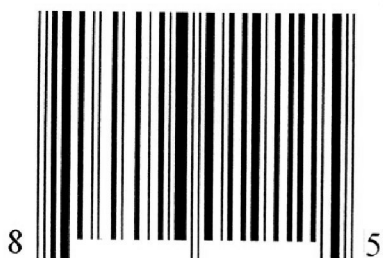
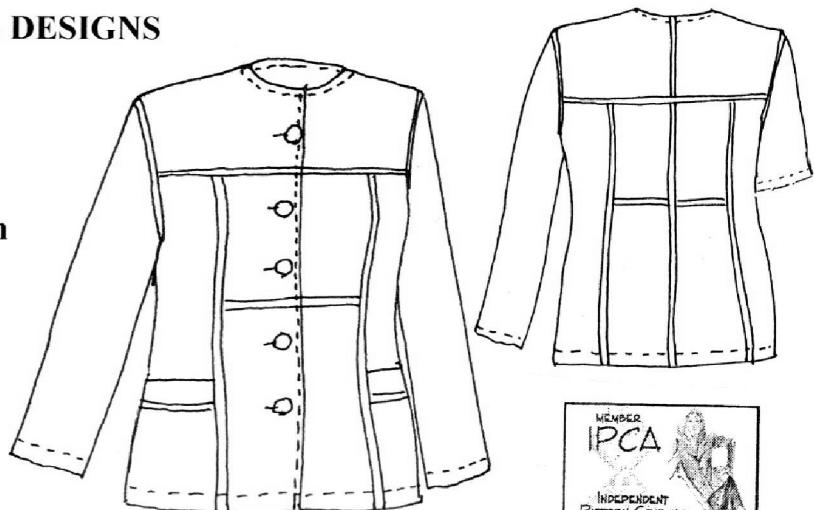
SEATTLE, WA 98144

(800) 369-4974

FAX (206) 725-6362

www.lorrainetorrence.com

© 2002



1 4 4 2 6 0 1 9 1 1