

ELK RIDGE BUGLE

MAY 2011



MEETINGS

City Council

May 10 & 24 7 p.m.

Planning Commission

May 12 7 p.m.

CONTACT INFORMATION

City Office

80 East Park Dr.
Elk Ridge, UT 84651

Phone

801.423.2300

FAX

801.423.1443

Email

staff@elkridgecity.org

Office Hours

9 a.m. to 3 p.m. | M-F
(open 10 a.m. on Mondays)

STAFF

Building Official

Corbett Stephens

Recorder

Jan Davis

Treasurer

Linda Cooper

Deputy Recorder

Janine Nilsson

Clerk/Asst. Treasurer

Annebel Meredith

Fire Chief

Seth Waite

Planning Comm. Coordinator

Marissa Bassir

Public Works

Wayne Frandsen

LOAFER CANYON WELL UPGRADE

A new submersible pump began operation on May 2. The entire system is new, including power transformers, a variable frequency drive, piping, and sump. The old pump had been problematic since Thanksgiving.

The upgrade required cooperation from many people under the planning and direction of Corbett Stephens—the City Council provided the funding, Loafer Canyon Recreation Association supplied water, SESD took care of the power, the State of Utah gave direction and approvals, Nickerson Co. cleaned the well and replaced the pump, Noel Hiatt Construction installed the sump, I-D Electric Co. did the electrical work, and our own Corbett Stephens and Wayne Frandsen provided most of the labor.

On behalf of Elk Ridge City, thanks to all who worked together to bring about this much-needed upgrade and the tremendous boon it is to the City water system. See photographs on page 4.

CITY CELEBRATION

Congratulations to the Jarvis family for winning 4 free movie passes for their theme for our City Celebration! (Our thanks to Payson Theatre for donating the passes.) The City Celebration is set for June 23rd–25th and is going to be GREAT this year! Get your family float plans together and plan on staying for the Mayor's Dinner (Indian Fry Bread this year) and the live music concert in the park! We will also have a Craft Fair with the Carnival the morning of the 25th after the Pancake Breakfast, so get crafting! Teens—count on attending "Teen Night at the Park" Saturday night, too. There will be something fun for everyone this year, so DON'T MISS IT !!

ELECTION INFORMATION

Three (3) City Council positions are open. Citizens interested in running for these seats on the council must file a declaration of candidacy with the City Recorder between July 1–15, during regular office hours.

Elk Ridge City Garage Sale

This is our first year for what we hope to be an annual event. Saturday, May 14th is our first citywide garage sale. Are you one who likes to shop garage sales to find a good deal? Do you like to rummage through your house to find things you want to get rid of and put up for sale to earn some extra cash? Or do you simply like to de-clutter and donate your old stuff to someone else who could use it? If you answered yes to any of these questions, then this day is for you.

The idea behind this day is to have tons of garage sales going on simultaneously throughout the city. If you don't want to hold your own sale, there is an option for you too. At the city building, there will be a trailer where you can drop off any items you would like to get rid of/donate. On the day of the sale, the items in the trailer will be sold as part of the city garage sale and proceeds will be used to fund projects run by the Elk Ridge Youth Council. As word gets around that this is an annual event, more and more people will come from outside the community to participate. So start collecting and get ready for a fun day.

Election Judges Needed!

Three Election Judges and **one Alternate Judge** are needed for the Municipal Election to be held in the fall of this current year. This may include both the General Election and possibly a Primary Election, depending on the number of candidates that file.

This is a fun way to see everyone in the City that comes to vote! The City will provide lunch and you will be paid \$100 for the day you are here working at the polls.

Training for Election Judges pays \$25.

Please contact the City Recorder, Jan Davis, at 423-2300, during regular City Office hours, as soon as possible because there will be a bit of training involved.

T-Ball Registration

T-Ball early registration is over, but we are continuing regular registration until May 10th. Registration forms and more information can be found at www.elkridgecity.org. Please turn your registration forms into the City Offices before that time. Any questions can be directed to Tricia Dent at www.elkridgesports@gmail.com or 801.609.1352.

FROM THE SHERIFF



From 03/15/11 to 04/15/11 Utah County Sheriff's Deputies responded to 42 calls for service in the City of Elk Ridge.

These calls included:

- 8 Abandoned 911 calls
- 7 Citizen Contacts
- 4 Medicals
- 4 VIN Inspections
- 4 Animal Problems
- 3 Suspicious
- 2 Traffic Offenses
- 2 Fraud
- 1 Fire Investigation
- 1 Criminal Mischief
- 1 Drugs
- 1 Traffic Accident
- 1 K9 Support
- 1 Runaway
- 1 Alarm
- 1 Motorist Assist

Please continue to report all crimes and suspicious activity. For emergencies, please dial 911. To report any other incidents please call Utah Valley Dispatch at 801.851.4100.

Disaster Preparedness & Emergency Management

The Disaster Preparedness and Emergency Management Team will hold a full committee meeting on Thursday, May 26th at 7:00 p.m. in the Relief Society room of the upper Alpine chapel at 259 Alpine Dr. in preparation for the **City Emergency Drill on June 18th at 9:00 a.m.**

The drill will focus on our city's communication and disaster response network in our neighborhoods to make sure residents know who their block captains are and how to respond and help in the event of a disaster or emergency.

Open Burn Extended to May 18

Get permits at the City Offices.

The City Offices will be closed for Memorial Day on Monday, May 30.

ELK RIDGE 2010 WATER QUALITY REPORT

We are pleased to present to you the 2010 Water Quality Report. This is designed to inform you about the quality of the water and services we deliver to you every day. We are committed to provide you with a safe and dependable supply of drinking water and are pleased to report that our drinking water is safe and meets federal and state requirements.

Elk Ridge City has approximately 600 water connections. Our water is classified as ground water and comes from wells 2, 5, and 7. We have a drinking water source protection plan that is available for review. It provides information such as potential sources of contamination and our source protection zones. Since our sources are in remote locations and there are no contamination sources in the protection zones, we consider our sources to have a very low susceptibility to potential contamination events.

We have developed management strategies to further protect our sources from contamination. If you have any questions or concerns regarding this report, source protection, or our water utility, feel free to contact the office. Please help us protect our water sources, which are the heart of our community, our way of life, and our children's future. You may reach us at 801.423.2300 or call Corbett Stephens directly at 801.380.1585.

You are invited to attend the City meetings to participate in decisions that affect our water—information is available in the *Bugle* and on the City website at www.elkridgecity.org.

The city routinely monitors for constituents in our drinking water in accordance with federal and Utah state laws. The following table shows the results of our monitoring (note that tests are done at specified intervals, not every year):

CONSTITUENT TABLE							
CONTAMINANT	VIOL. Y/N	LEVEL DETECTED	UNIT MEAS.	MCLG	MCL	DATE SAMPLED	LIKELY SOURCE OF CONTAMINATION
MICROBIOLOGICAL CONTAMINANTS							
Turbidity (Ground Water)	N	1.15	NTU	N/A	5	2010	Soil runoff
INORGANIC CONTAMINANTS							
Arsenic	N	ND	ppb	0	10	2010	Erosion of natural deposits; runoff from orchards; runoff from glass and electronics production wastes
Barium	N	47	ppb	2000	2000	2010	Discharge of drilling wastes; discharge from metal refineries; erosion of natural deposits
Chromium	N	ND	ppb	100	100	2010	Discharge from steel and pulp mills; erosion of natural deposits
Fluoride	N	ND	ppb	4000	4000	2010	Water additive which promotes strong teeth; erosion of natural deposits; discharge from fertilizer and aluminum factories
Nitrate (as Nitrogen)	N	ND	ppb	10000	10000	2010	Runoff from fertilizer use; leaching from septic tanks, sewage; erosion of natural deposits
Selenium	N	1	ppb	50	50	2010	Discharge from petroleum and metal refineries; erosion of natural deposits; discharge from mines
Sodium	N	3.6	ppm	20	N/A	2010	Erosion of natural deposits; discharge from refineries and factories; runoff from landfills.
Sulfate	N	20	ppm	1000	1000	2010	Erosion of natural deposits; discharge from refineries and factories; runoff from landfills, runoff from cropland
Total Dissolved Solids (TDS)	N	272	ppm	2000	2000	2010	Erosion of natural deposits
RADIOLOGICAL CONTAMINANTS							
Alpha emitters	N	3-6	pCi/l	0	15	2010	Erosion of natural deposits

Definitions

Non-Detects (ND)—Laboratory analysis indicates that the constituent is not present.

ND/Low-High—For water systems using multiple sources of water, the lowest and highest values detected in all the sources are recorded in the same space in the table.

Parts per million (ppm) or Milligrams per liter (mg/l)—One part per million corresponds to one minute in two years or a single penny in \$10,000.

Parts per billion (ppb) or Micrograms per liter (ug/l)—One part per billion corresponds to one minute in 2,000 years, or a single penny in \$10,000,000.

Parts per trillion (ppt) or Nanograms per liter (nanograms/l)—One part per trillion corresponds to one minute in 2,000,000 years, or a single penny in \$10,000,000,000.

Picocuries per liter (pCi/L)—Picocuries per liter is a measure of the radioactivity in water.

Millirems per year (mrem/yr)—Measure of radiation absorbed by the body.

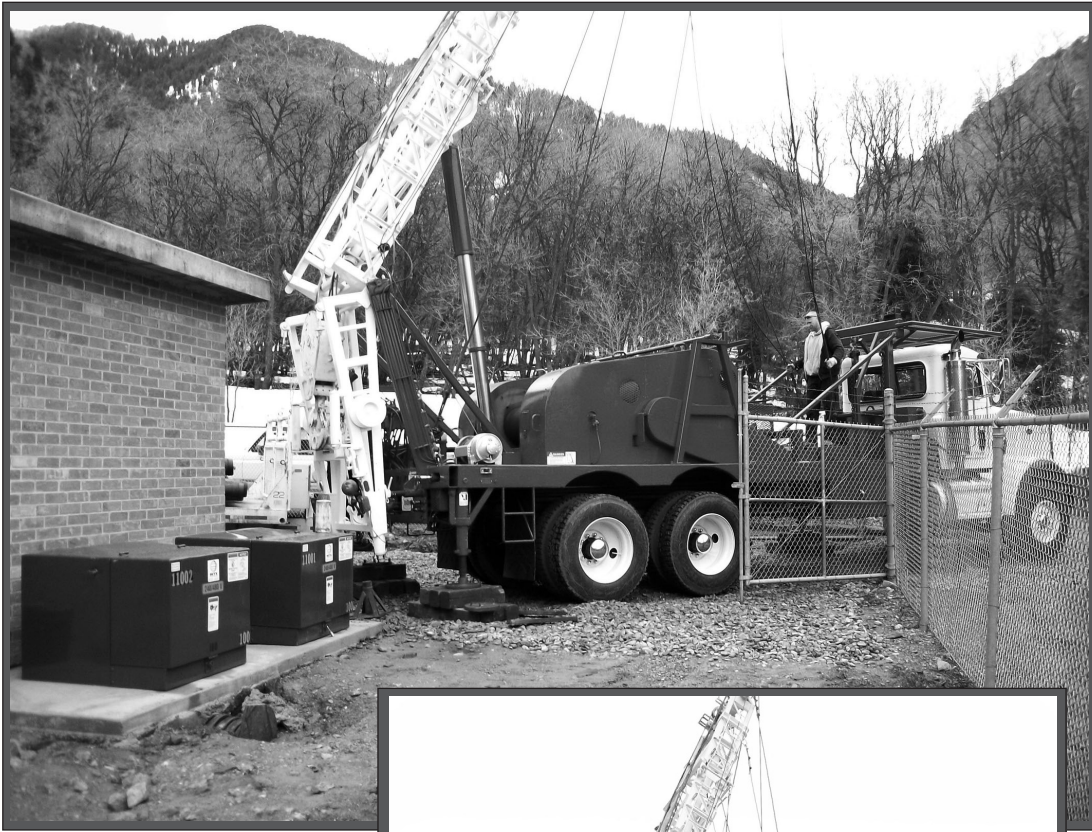
Nephelometric Turbidity Unit (NTU)—Nephelometric turbidity unit is a measure of the clarity of water. Turbidity in excess of 5 NTU is just noticeable to the average person.

Action Level (AL)—The concentration of a contaminant which, if exceeded, triggers treatment or other requirements which a water system must follow.

Maximum Contaminant Level (MCL)—The “maximum allowed” (MCL) is the highest level of a contaminant that is allowed in drinking water. MCLs are set as close to the MCLGs as feasible using the best available treatment technology.

Maximum Contaminant Level Goal (MCLG)—The “goal” (MCLG) is the level of a contaminant in drinking water below which there is no known or expected risk to health. MCLGs allow for a margin of safety.

Date—Because of required sampling time frames, i.e., yearly, 3 years, 4 years, and 6 years, sampling dates may seem out of date.



Loafer Canyon Well Upgrade

